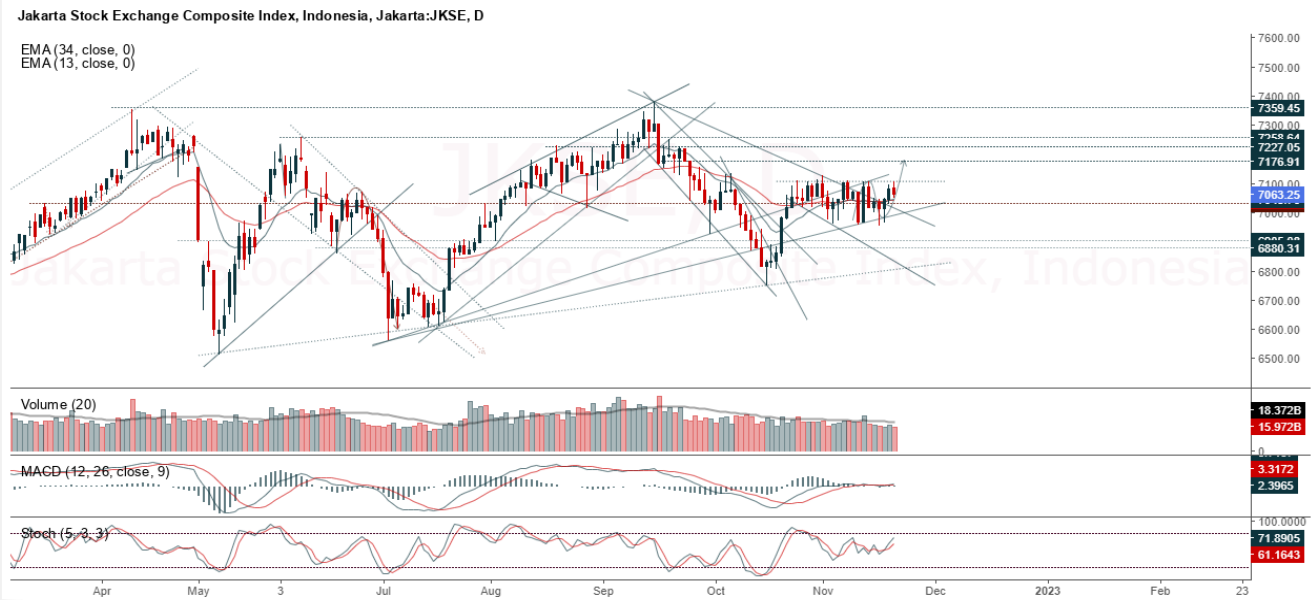


JCI Range Today : 6,999 – 7,027 (Support), 7,111 – 7,128 (Resistance)



JCI closed lower with a bearish candle. Stochastic indicator is bullish, MACD histogram is moving positive (sloping line) and volume is decreasing. If it returns to bearish, JCI is expected to continue weakening to the support at the range of 6,999 – 7,027. If JCI is able to move bullish, there is a chance for JCI to strengthen again to the resistance at the range of 7,111 – 7,128.

APLN

Agung Podomoro Land Tbk, Indonesia, Jakarta:APLN, D

EMA (13, close, 0)
EMA (34, close, 0)



(APLN) The price closed higher with a bullish candle. The price has the opportunity to strengthen again to the nearest resistance. Stochastic indicator is bullish, MACD histogram is moving positive (bullish line) and volume is starting to increase. Confirmation to buy if the next candle is bullish again or buy on support if it goes down first. We suggest being careful if it fails to stay above the support level. **(Trading Buy)**

TRADING STRATEGY:

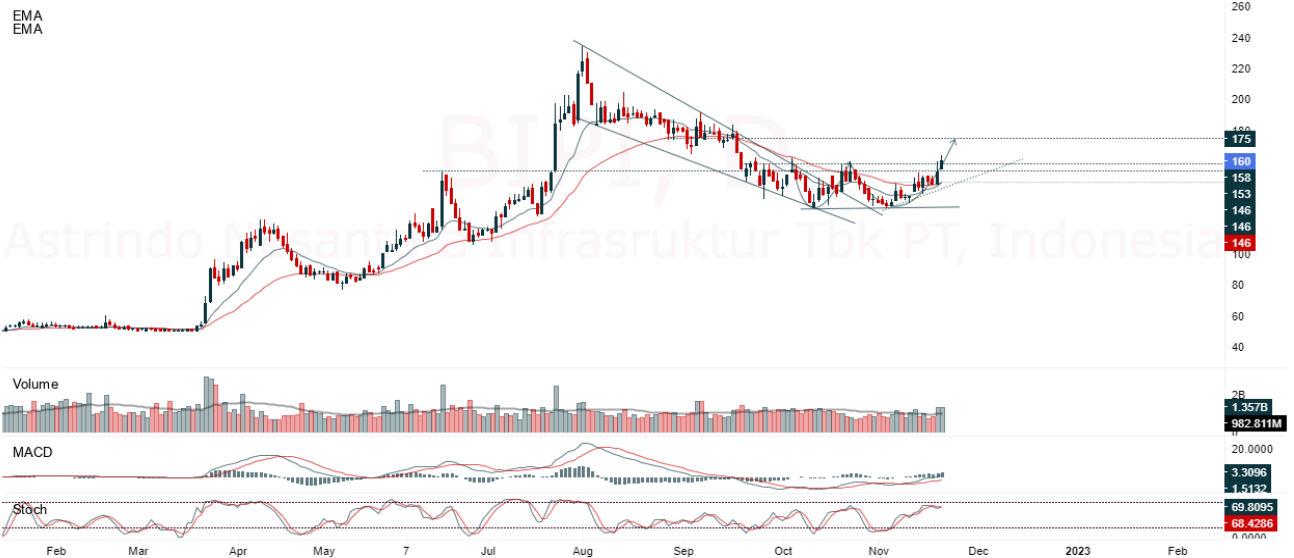
1. Target Price: The price has a bullish opportunity to test the resistance level 175. If it breaks level 175 then the price will go to level 180. We recommend to be careful if the price fails to break through or turn around the support area.

2. Stop Loss: To minimize the risk of loss, we recommend placing a stop loss at level 164.

Entry Buy : 167 – 170
Target Price : 175 – 180
Support : 165 – 167
Cutloss : 164

BIPI

Astrindo Nusantara Infrastruktur Tbk PT, Indonesia, Jakarta:BIPI, D



(BIPI) The price closed higher with a bullish candle. The price has the opportunity to continue strengthening to the nearest resistance. Stochastic indicator is bullish, MACD histogram is moving positive again (bullish line) and volume trend is increasing. Confirmation to buy if the next candle is bullish again or buy on support if it goes down first. We suggest being careful if it fails to stay above the support level. **(Trading Buy)**

TRADING STRATEGY:

1.Target Price: The price has a bullish opportunity to test the resistance level 164. If it breaks level 164 then the price will go to level 168. We recommend to be careful if the price fails to break through or turn around the support area.

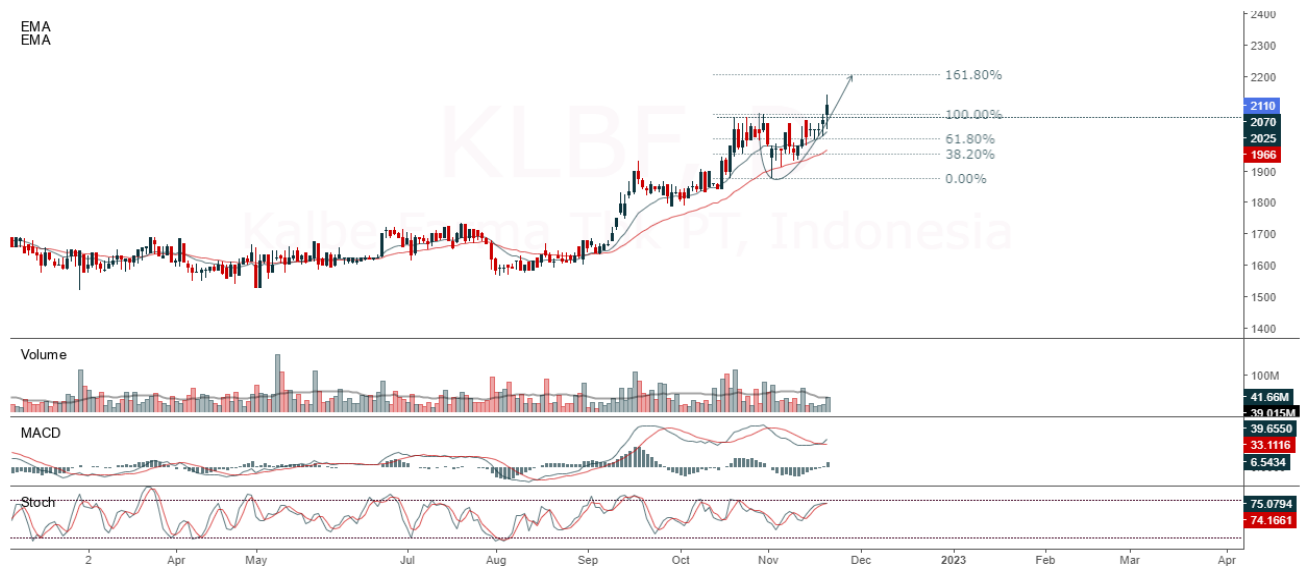
2. Stop Loss: To minimize the risk of loss, we recommend placing a stop loss at level 153.

Entry Buy : 157 – 160
Target Price : 164 – 168
Support : 154 – 157
Cutloss : 153

KLBF

Kalbe Farma Tbk PT, Indonesia, Jakarta:KLBF, D

EMA
EMA



(KLBF) The price closed higher and broke up to the resistance. The price has the opportunity to strengthen again to the nearest resistance. Stochastic indicator is bullish, MACD histogram is moving positive (bullish line) and volume is increasing. Confirmation to buy if the next candle is bullish again or buy on support if it goes down first. We suggest being careful if it fails to stay above the support level. **(Trading Buy)**

TRADING STRATEGY:

1. Target Price: The price has a bullish opportunity to test the resistance level 2,160. If it breaks level 2,160 then the price will go to level 2,190. We recommend to be careful if the price fails to break through or turn around the support area.

2. Stop Loss: To minimize the risk of loss, we recommend placing a stop loss at level 2,050.

Entry Buy : 2,080 – 2,110
 Target Price : 2,160 – 2,190
 Support : 2,060 – 2,080
 Cutloss : 2,050

PTBA

Bukit Asam Tbk PT, Indonesia, Jakarta:PTBA, D

EMA (13, close, 0)
EMA (34, close, 0)



(PTBA) The price closed higher and broke up to the closest resistance. The price has the opportunity to strengthen again to the next resistance. The stochastic indicator is bullish, MACD histogram is moving positive again (bullish line) and the volume trend is increasing slightly. Confirmation to buy if the next candle is bullish again or buy on support if it goes down first. We suggest being careful if it fails to stay above the support level. **(Trading Buy)**

TRADING STRATEGY:

- 1.Target Price: The price has a bullish opportunity to test the resistance level 3,720. If it breaks level 3,720 then the price will go to level 3,780. We recommend to be careful if the price fails to break through or turn around the support area.
2. Stop Loss: To minimize the risk of loss, we recommend placing a stop loss at level 3,550.

Entry Buy : 3,580 – 3,650
 Target Price : 3,720 – 3,780
 Support : 3,560 – 3,580
 Cutloss : 3,550

Forecast – Technical Analysis

Ticker	MA5	RSI Rec	MACD Trend	Recomm.	Pivot Point	Support		Resistance		Stop Loss Level
						1	2	1	2	
JCI	Negatif	Trading	Positif	Hold	7,075	7,050	7,025	7,100	7,125	6,925
ADRO	Negatif	Trading	Negatif	Sell	3,655	3,600	3,555	3,700	3,755	3,500
AMRT	Negatif	OverBought	Positif	Sell	2,780	2,740	2,680	2,840	2,880	2,640
ANTM	Positif	Trading	Positif	Speculative Buy	1,975	1,950	1,930	1,995	2,020	1,900
ARTO	Negatif	Trading	Positif	Hold	5,925	5,700	5,500	6,125	6,350	5,400
ASII	Positif	Oversold	Negatif	Speculative Buy	6,300	6,250	6,200	6,350	6,400	6,100
BBCA	Positif	Trading	Negatif	Hold	8,800	8,725	8,625	8,900	8,975	8,500
BBNI	Negatif	Trading	Negatif	Sell	9,175	9,100	9,025	9,250	9,325	8,900
BBRI	Negatif	Trading	Negatif	Sell	4,600	4,570	4,530	4,640	4,670	4,460
BBTN	Positif	Trading	Negatif	Hold	1,515	1,505	1,495	1,525	1,535	1,475
BFIN	Negatif	Trading	Positif	Hold	1,135	1,125	1,105	1,155	1,165	1,090
BMRI	Positif	Trading	Negatif	Hold	10,125	10,050	9,950	10,225	10,300	9,800
BRIS	Positif	Oversold	Positif	Buy	1,370	1,360	1,355	1,375	1,385	1,330
BRPT	Negatif	Trading	Positif	Hold	825	815	805	835	845	790
BUKA	Negatif	OverBought	Positif	Sell	306	298	288	316	324	284
CPIN	Negatif	Trading	Positif	Hold	5,850	5,825	5,775	5,900	5,925	5,675
EMTK	Negatif	Trading	Positif	Hold	1,700	1,660	1,640	1,720	1,760	1,615
ERAA	Negatif	Trading	Positif	Hold	407	405	403	409	411	396
EXCL	Positif	Oversold	Negatif	Speculative Buy	2,285	2,265	2,245	2,305	2,325	2,210
GOTO	Negatif	Trading	Positif	Hold	215	210	205	220	225	202
HMSP	Positif	Trading	Negatif	Hold	930	925	920	935	940	905
HRUM	Negatif	Trading	Positif	Hold	1,655	1,640	1,620	1,675	1,690	1,595
ICBP	Positif	Trading	Negatif	Hold	9,725	9,625	9,525	9,825	9,925	9,375
INCO	Positif	Trading	Positif	Speculative Buy	7,025	6,900	6,850	7,075	7,200	6,725
INDF	Negatif	Trading	Positif	Hold	6,525	6,475	6,450	6,550	6,600	6,350
INDY	Negatif	Oversold	Negatif	Speculative Buy	2,850	2,815	2,790	2,875	2,910	2,745
INKP	Positif	Trading	Negatif	Hold	9,850	9,750	9,625	9,975	10,075	9,475
INTP	Positif	Trading	Negatif	Hold	9,825	9,725	9,575	9,975	10,075	9,450
ITMG	Negatif	Oversold	Negatif	Speculative Buy	39,350	38,775	38,150	39,975	40,550	37,575
JPFA	Positif	Trading	Positif	Speculative Buy	1,355	1,345	1,335	1,365	1,375	1,315
KLBF	Negatif	OverBought	Negatif	Strong Sell	2,095	2,035	1,975	2,155	2,215	1,945
MDKA	Positif	OverBought	Positif	Hold	4,390	4,320	4,250	4,460	4,530	4,185
MEDC	Positif	Trading	Negatif	Hold	1,055	1,040	1,025	1,070	1,085	1,010
MIKA	Positif	Trading	Negatif	Hold	2,700	2,680	2,650	2,730	2,750	2,610
MNCN	Positif	Trading	Positif	Speculative Buy	810	800	800	810	820	785
PGAS	Positif	Trading	Negatif	Hold	1,805	1,790	1,780	1,815	1,830	1,750
PTBA	Negatif	Oversold	Negatif	Speculative Buy	3,600	3,550	3,500	3,650	3,700	3,450
SMGR	Positif	Trading	Negatif	Hold	7,700	7,650	7,600	7,750	7,800	7,475
TBIG	Positif	Oversold	Positif	Buy	2,305	2,265	2,245	2,325	2,365	2,210
TINS	Positif	Trading	Negatif	Hold	1,335	1,320	1,305	1,350	1,365	1,285
TLKM	Positif	Oversold	Negatif	Speculative Buy	4,030	4,000	3,980	4,050	4,080	3,920
TOWR	Negatif	Trading	Positif	Hold	1,140	1,130	1,115	1,155	1,165	1,095
TPIA	Positif	Trading	Positif	Speculative Buy	2,365	2,340	2,315	2,390	2,415	2,280
UNTR	Negatif	Oversold	Negatif	Speculative Buy	28,975	28,650	28,375	29,250	29,575	27,925
UNVR	Negatif	Trading	Negatif	Sell	4,590	4,550	4,510	4,630	4,670	4,440
WIKA	Positif	Trading	Positif	Speculative Buy	925	915	905	935	945	890

OUR TEAM

Sukarno Alatas

Head of Equity Research

sukarno@kiwoom.co.id | 021 5010 5800**Michelle Abadi**

Associate

michelle@kiwoom.co.id | 021 5010 5800**Abdul Azis Setyo Wibowo**

Equity Research Analyst

azis@kiwoom.co.id | 021 5010 5800**Rizky Khaerunnisa**

Equity Research Analyst

rizky@kiwoom.co.id | 021 5010 5800**OTHER DISCLOSURES**

All Kiwoom's research reports made available to clients are simultaneously available on our own website <http://www.kiwoom.co.id/>. Not all research content is redistributed, e-mailed or made available to third-party aggregators. For all research reports available on a particular stock, please contact your sales representative. Any data discrepancies in this report could be the result of different calculations and/or adjustments.

DISCLAIMER This report has been prepared and issued by PT Kiwoom Sekuritas Indonesia. Information has been obtained from sources believed to be reliable but Kiwoom Securities do not warrant its completeness or accuracy. Forward-looking information or statements in this report contain information that is based on forecast of future results, estimates of amounts not yet determinable, assumptions, and therefore involve known and unknown risks and uncertainties which may cause the actual results, performance or achievements of their subject matter to be materially different from current expectations.

To the fullest extent allowed by law, PT Kiwoom Sekuritas Indonesia shall not be liable for any direct, indirect or consequential losses, loss of profits, damages, costs or expenses incurred or suffered by any person or organization arising from reliance on or use of any information contained on this report. The information that we provide should not be construed in any manner whatsoever as, personalized advice.

No mention of a particular security in this report constitutes a recommendation to buy, sell or hold that or any security, or that any particular security, portfolio of securities, transaction or investment strategy is suitable for any specific person. This report is being supplied to you solely for your information and may not be reproduced by, further distributed to or published in whole or in part by, any other person.