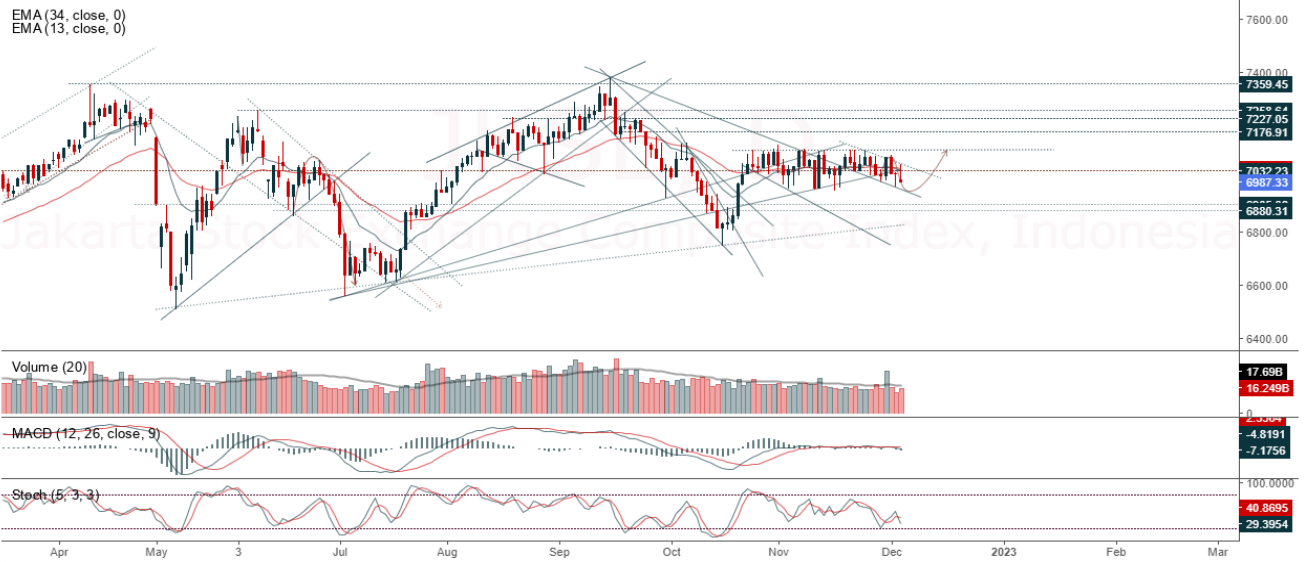


JCI Range Today : 6,933 – 6,955 (Support), 7,036 – 7,053 (Resistance)

Jakarta Stock Exchange Composite Index, Indonesia, Jakarta:JKSE, D



JCI closed down with a bearish candle. Stochastic indicator is bearish, MACD histogram is moving negative (line is weakening) and volume is decreasing. If it returns to bearish, JCI is expected to continue weakening to the support at the range of 6,933 – 6,955. If JCI is able to move bullish, there is a chance for JCI to strengthen again to the resistance at the range of 7,036 – 7,053.

ISAT

Indosat Tbk, Indonesia, Jakarta:ISAT, D

EMA (13, close, 0)
EMA (34, close, 0)



(ISAT) The price closed higher and formed a swing low again. The price has the opportunity to strengthen again to the nearest resistance. Stochastic indicator is bullish, MACD histogram is moving in the positive direction (sloping line) and volume slightly increased. Confirmation to buy if the next candle is bullish again or buy on support if it goes down first. We suggest being careful if it fails to stay above the support level. **(Trading Buy)**

TRADING STRATEGY:

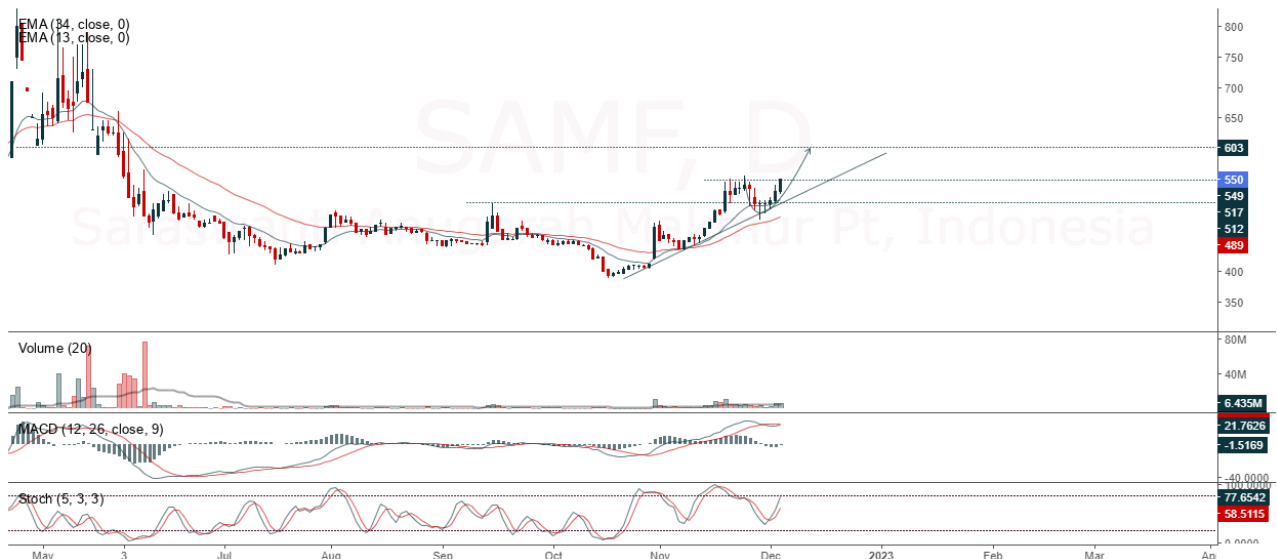
1. Target Price: The price has a bullish opportunity to test the resistance level 6,125. If it breaks level 6,125 then the price will go to level 6,175. We recommend to be careful if the price fails to break through or turn around the support area.

2. Stop Loss: To minimize the risk of loss, we recommend placing a stop loss at level 5,850.

Entry Buy	: 5,900 – 6,000
Target Price	: 6,125 – 6,175
Support	: 5,875 – 5,900
Cutloss	: 5,850

SAMF

Saraswanti Anugerah Makmur Pt, Indonesia, Jakarta: SAMF, D



(SAMF) The price closed higher and has potential to break up to the resistance. The price has the opportunity to test the resistance at 555 and head to the next resistance. Stochastic indicator is bullish, MACD histogram is moving in the positive direction (golden cross line) and volume is increasing. Confirmation to buy if the next candle is bullish again (buy on break at level of 555) or buy on support if it goes down first. We suggest being careful if it fails to stay above the support level. **(Buy on break)**

TRADING STRATEGY:

1. Target Price: The price has a bullish opportunity to test the resistance level 565. If it breaks level 565 then the price will go to level 585. We recommend to be careful if the price fails to break through or turn around the support area.

2. Stop Loss: To minimize the risk of loss, we recommend placing a stop loss at level 525.

Entry Buy : 535 – 550
 Target Price : 565 – 585
 Support : 530 – 535
 Cutloss : 525

SLIS

Gaya Abadi Sempurna , Indonesia, Jakarta:SLIS, D



(SLIS) The price closed higher and rallied again. The price has the opportunity to strengthen again to the next resistance. Stochastic indicator is bullish, MACD histogram is moving positive (bullish line) and volume is increasing. Confirmation to buy if the next candle is bullish again or buy on support if it goes down first. We suggest being careful if it fails to stay above the support level. **(Trading Buy)**

TRADING STRATEGY:

1.Target Price: The price has a bullish opportunity to test the resistance level 284. If it breaks level 284 then the price will go to level 296. We recommend to be careful if the price fails to break through or turn around the support area.

2. Stop Loss: To minimize the risk of loss, we recommend placing a stop loss at level 258.

Entry Buy : 264 – 274
 Target Price : 284 – 296
 Support : 260 – 264
 Cutloss : 258

TRIN

Perintis Trinita Properti PT, Indonesia, Jakarta:TRIN, D

EMA (34, close, 0)
EMA (13, close, 0)



(TRIN) The price closed higher and broke up the resistance trendline. The price has the opportunity to strengthen again to the next resistance. Stochastic indicator is bullish, MACD histogram is moving positive again (bullish line) and volume is neutral. Confirmation to buy if the next candle is bullish again or buy on support if it goes down first. We suggest being careful if it fails to stay above the support level. **(Trading Buy)**

TRADING STRATEGY:

- 1.Target Price: The price has a bullish opportunity to test the resistance level 352. If it breaks level 352 then the price will go to level 370. We recommend to be careful if the price fails to break through or turn around the support area.
2. Stop Loss: To minimize the risk of loss, we recommend placing a stop loss at level 322.

Entry Buy : 328– 340
Target Price : 352 – 370
Support : 324 – 328
Cutloss : 322

Forecast – Technical Analysis

Ticker	MA5	RSI Rec	MACD Trend	Recomm.	Pivot Point	Support		Resistance		Stop Loss Level
						1	2	1	2	
JCI	Negatif	Trading	Negatif	Sell	7,000	6,950	6,950	7,025	7,075	6,825
ADRO	Negatif	Trading	Positif	Hold	3,830	3,765	3,700	3,895	3,960	3,640
AMRT	Negatif	OverBought	Positif	Sell	2,930	2,900	2,880	2,950	2,980	2,835
ANTM	Negatif	Trading	Positif	Hold	2,065	2,045	2,025	2,085	2,105	1,990
ARTO	Positif	Oversold	Negatif	Speculative Buy	3,985	3,825	3,755	4,055	4,215	3,695
ASII	Positif	Trading	Negatif	Hold	6,050	6,000	5,950	6,100	6,150	5,850
BBCA	Positif	Trading	Positif	Speculative Buy	8,825	8,725	8,700	8,850	8,950	8,550
BBNI	Negatif	OverBought	Positif	Sell	9,750	9,675	9,575	9,850	9,925	9,425
BBRI	Negatif	OverBought	Positif	Sell	4,900	4,865	4,830	4,935	4,970	4,755
BBTN	Positif	Trading	Positif	Speculative Buy	1,490	1,440	1,405	1,525	1,575	1,385
BFIN	Negatif	Trading	Negatif	Sell	1,095	1,065	1,030	1,130	1,160	1,010
BMRI	Negatif	OverBought	Positif	Sell	10,775	10,550	10,350	10,975	11,200	10,200
BRIS	Positif	Oversold	Negatif	Speculative Buy	1,320	1,305	1,295	1,330	1,345	1,275
BRPT	Positif	Trading	Negatif	Hold	790	785	770	805	810	760
BUKA	Positif	Trading	Negatif	Hold	266	257	248	275	284	244
CPIN	Positif	Trading	Negatif	Hold	5,725	5,650	5,550	5,825	5,900	5,450
EMTK	Positif	Oversold	Negatif	Speculative Buy	1,245	1,180	1,130	1,295	1,360	1,110
ERAA	Positif	Trading	Positif	Speculative Buy	395	386	381	400	409	375
EXCL	Negatif	Trading	Positif	Hold	2,305	2,265	2,235	2,335	2,375	2,200
GOTO	Positif	Oversold	Negatif	Speculative Buy	123	123	123	123	123	121
HMSP	Positif	Trading	Positif	Speculative Buy	970	955	945	980	995	930
HRUM	Negatif	Trading	Positif	Hold	1,780	1,755	1,730	1,805	1,830	1,705
ICBP	Negatif	OverBought	Positif	Sell	10,250	10,150	10,000	10,400	10,500	9,850
INCO	Negatif	OverBought	Positif	Sell	7,500	7,350	7,250	7,600	7,750	7,150
INDF	Negatif	OverBought	Positif	Sell	6,750	6,725	6,650	6,825	6,850	6,550
INDY	Negatif	Trading	Positif	Hold	2,925	2,865	2,835	2,955	3,015	2,790
INKP	Negatif	Trading	Negatif	Sell	9,925	9,875	9,775	10,025	10,075	9,625
INTP	Negatif	Trading	Negatif	Sell	9,950	9,900	9,800	10,050	10,100	9,650
ITMG	Negatif	Trading	Positif	Hold	41,350	40,750	40,125	41,975	42,575	39,500
JPFA	Positif	Oversold	Negatif	Speculative Buy	1,280	1,260	1,240	1,300	1,320	1,220
KLBF	Positif	Trading	Negatif	Hold	2,050	2,005	1,970	2,085	2,130	1,940
MDKA	Negatif	Trading	Negatif	Sell	4,460	4,420	4,390	4,490	4,530	4,325
MEDC	Negatif	Trading	Negatif	Sell	1,100	1,065	1,045	1,120	1,155	1,030
MIKA	Negatif	Trading	Positif	Hold	2,805	2,730	2,665	2,870	2,945	2,625
MNCN	Positif	Trading	Positif	Speculative Buy	815	805	800	820	830	785
PGAS	Negatif	Trading	Positif	Hold	1,875	1,850	1,825	1,900	1,925	1,800
PTBA	Negatif	Trading	Positif	Hold	3,745	3,690	3,635	3,800	3,855	3,580
SMGR	Positif	Trading	Negatif	Hold	7,675	7,650	7,625	7,700	7,725	7,500
TBIG	Negatif	Trading	Positif	Hold	2,400	2,380	2,340	2,440	2,460	2,305
TINS	Positif	Oversold	Negatif	Speculative Buy	1,250	1,230	1,225	1,255	1,275	1,205
TLKM	Positif	Trading	Positif	Speculative Buy	3,910	3,825	3,740	3,995	4,080	3,680
TOWR	Negatif	Trading	Positif	Hold	1,145	1,135	1,125	1,155	1,165	1,110
TPIA	Negatif	Trading	Positif	Hold	2,355	2,325	2,295	2,385	2,415	2,260
UNTR	Negatif	Oversold	Positif	Speculative Buy	28,925	28,375	27,925	29,375	29,925	27,500
UNVR	Negatif	Trading	Positif	Hold	4,740	4,675	4,640	4,775	4,840	4,570
WIKA	Negatif	Trading	Negatif	Sell	900	885	875	910	925	860

OUR TEAM

Sukarno Alatas

Head of Equity Research

sukarno@kiwoom.co.id | 021 5010 5800**Michelle Abadi**

Associate

michelle@kiwoom.co.id | 021 5010 5800**Abdul Azis Setyo Wibowo**

Equity Research Analyst

azis@kiwoom.co.id | 021 5010 5800**Rizky Khaerunnisa**

Equity Research Analyst

rizky@kiwoom.co.id | 021 5010 5800**OTHER DISCLOSURES**

All Kiwoom's research reports made available to clients are simultaneously available on our own website <http://www.kiwoom.co.id/>. Not all research content is redistributed, e-mailed or made available to third-party aggregators. For all research reports available on a particular stock, please contact your sales representative. Any data discrepancies in this report could be the result of different calculations and/or adjustments.

DISCLAIMER This report has been prepared and issued by PT Kiwoom Sekuritas Indonesia. Information has been obtained from sources believed to be reliable but Kiwoom Securities do not warrant its completeness or accuracy. Forward-looking information or statements in this report contain information that is based on forecast of future results, estimates of amounts not yet determinable, assumptions, and therefore involve known and unknown risks and uncertainties which may cause the actual results, performance or achievements of their subject matter to be materially different from current expectations.

To the fullest extent allowed by law, PT Kiwoom Sekuritas Indonesia shall not be liable for any direct, indirect or consequential losses, loss of profits, damages, costs or expenses incurred or suffered by any person or organization arising from reliance on or use of any information contained on this report. The information that we provide should not be construed in any manner whatsoever as, personalized advice.

No mention of a particular security in this report constitutes a recommendation to buy, sell or hold that or any security, or that any particular security, portfolio of securities, transaction or investment strategy is suitable for any specific person. This report is being supplied to you solely for your information and may not be reproduced by, further distributed to or published in whole or in part by, any other person.