

**JCI Range Today : 6,716 – 6,747 (Support), 6,862 – 6,892 (Resistance)**



JCI closed slightly down and a technical rebound occurred after briefly touching support. The stochastic indicator has a golden cross opportunity, MACD histogram is negative (the line is weakening) and volume is decreasing. If it returns to bearish, JCI is expected to continue weakening to the support at the range of 6,716 – 6,747. If JCI is able to move bullish, there is a chance for JCI to strengthen again to the resistance at the range of 6,862 – 6,892.

**BBRI**

Bank Rakyat Indonesia Persero, Indonesia, Jakarta:BBRI, D



**(BBRI)** The price closed higher with a bullish candle. The price has the opportunity to strengthen again to the nearest resistance. The stochastic indicator has a golden cross opportunity, MACD histogram is moving positive but falling (sloping line) and volume is neutral. Confirmation to buy if the next candle is bullish again or buy on support if it goes down first. We suggest being careful if it fails to stay above the support level **(Trading Buy)**

**TRADING STRATEGY:**

1. Target Price: The price has a bullish opportunity to test the resistance level 4,930. If it breaks level 4,930 then the price will go to level 4,980. We recommend to be careful if the price fails to break through or turn around the support area.

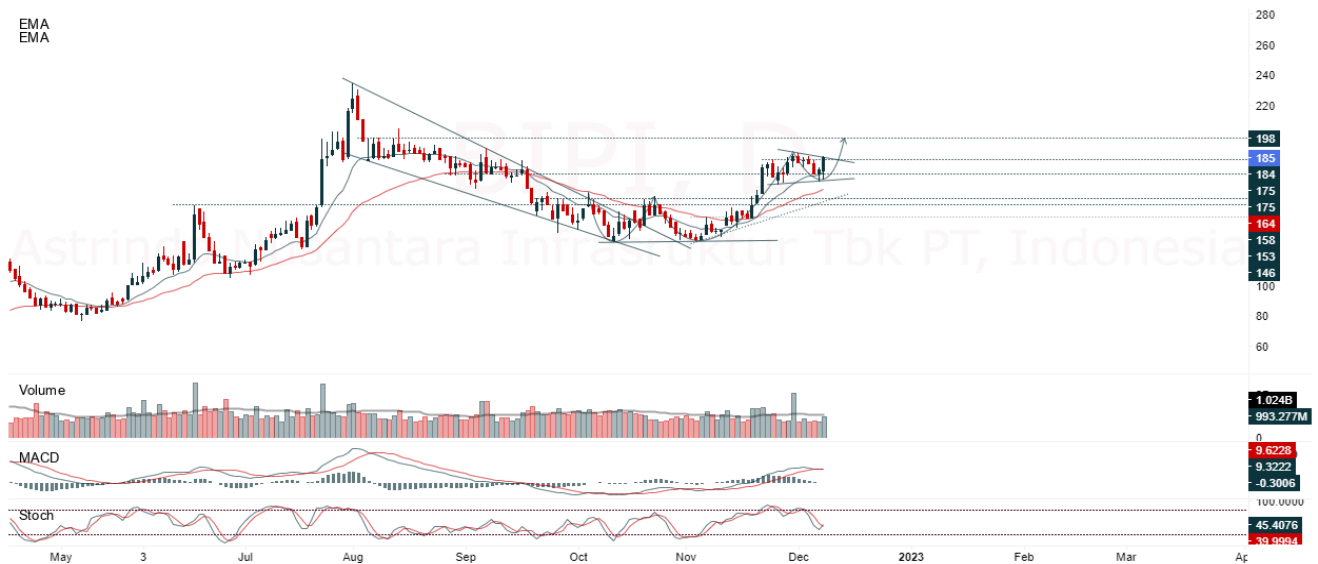
2. Stop Loss: To minimize the risk of loss, we recommend placing a stop loss at level 4,730.

Entry Buy : 4,800 – 4,840  
 Target Price : 4,930 – 4,980  
 Support : 4,740 – 4,800  
 Cutloss : 4,730

**BIPI**

Astrindo Nusantara Infrastruktur Tbk PT, Indonesia, Jakarta:BIPI, D

EMA  
EMA



**(BIPI)** The price closed higher with a bullish candle. The price has the opportunity to test the nearest resistance. Stochastic golden cross indicator, MACD histogram is moving positive (bullish line) and volume is increasing slightly. Confirmation to buy if the next candle is bullish again or buy on support if it goes down first. We suggest being careful if it fails to stay above the support level **(Trading Buy)**

**TRADING STRATEGY:**

1. Target Price: The price has a bullish opportunity to test the resistance level 190. If it breaks level 190 then the price will go to level 194. We recommend to be careful if the price fails to break through or turn around the support area.

2. Stop Loss: To minimize the risk of loss, we recommend placing a stop loss at level 178.

Entry Buy : 181 – 185  
 Target Price : 190 – 194  
 Support : 179 – 181  
 Cutloss : 178

**BSDE**

Bumi Serpong Damai Tbk, Indonesia, Jakarta:BSDE, D

EMA (13, close, 0)  
EMA (34, close, 0)



**(BSDE)** The price closed higher after touching support. The price has the opportunity to strengthen to the nearest resistance. Stochastic golden cross indicator, MACD histogram is negative (bearish line) and volume is decreasing. Confirmation to buy if the next candle is bullish again or buy on support if it goes down first. We suggest being careful if it fails to stay above the support level **(Trading Buy)**

**TRADING STRATEGY:**

1. Target Price: The price has a bullish opportunity to test the resistance level 930. If it breaks level 930 then the price will go to level 940. We recommend to be careful if the price fails to break through or turn around the support area.

2. Stop Loss: To minimize the risk of loss, we recommend placing a stop loss at level 885.

Entry Buy : 900 – 910  
Target Price : 930 – 940  
Support : 890 – 900  
Cutloss : 885

## MAPI

Mitra Adiperkasa Tbk, Indonesia, Jakarta:MAPI, D

EMA (13, close, 0)  
EMA (34, close, 0)



**(MAPI)** The price closed higher with a bullish candle. The price has the opportunity to strengthen again to the nearest resistance. Stochastic indicator is bullish, MACD histogram is moving positive (bullish line) and volume is neutral. Confirmation to buy if the next candle is bullish again or buy on support if it goes down first. We suggest being careful if it fails to stay above the support level **(Trading Buy)**

### TRADING STRATEGY:

1. Target Price: The price has a bullish opportunity to test the resistance level 1,490. If it breaks level 1,490 then the price will go to level 1,510. We recommend to be careful if the price fails to break through or turn around the support area.

2. Stop Loss: To minimize the risk of loss, we recommend placing a stop loss at level 1,405.

Entry Buy : 1,435 – 1,460  
Target Price : 1,490 – 1,510  
Support : 1,410 – 1,435  
Cutloss : 1,405

**Forecast – Technical Analysis**

Ticker	MA5	RSI Rec	MACD Trend	Recomm.	Pivot Point	Support		Resistance		Stop Loss Level
						1	2	1	2	
JCI	Positif	Oversold	Negatif	Speculative Buy	6,775	6,725	6,650	6,850	6,900	6,550
ADRO	Positif	Trading	Positif	Speculative Buy	3,780	3,720	3,650	3,850	3,910	3,595
AMRT	Positif	Trading	Negatif	Hold	2,780	2,675	2,580	2,875	2,980	2,540
ANTM	Positif	Trading	Negatif	Hold	1,965	1,940	1,890	2,015	2,040	1,865
ARTO	Positif	Oversold	Negatif	Speculative Buy	3,875	3,740	3,585	4,030	4,165	3,530
ASII	Positif	Oversold	Negatif	Speculative Buy	5,675	5,550	5,425	5,800	5,925	5,325
BBCA	Positif	Oversold	Negatif	Speculative Buy	8,450	8,325	8,225	8,550	8,675	8,100
BBNI	Positif	Trading	Positif	Speculative Buy	9,450	9,375	9,175	9,650	9,725	9,050
BBRI	Positif	Trading	Positif	Speculative Buy	4,790	4,735	4,660	4,865	4,920	4,590
BBTN	Positif	Oversold	Negatif	Speculative Buy	1,400	1,380	1,360	1,420	1,440	1,340
BFIN	Negatif	Trading	Negatif	Sell	1,090	1,080	1,065	1,105	1,115	1,045
BMRI	Negatif	Trading	Positif	Hold	10,075	9,950	9,825	10,200	10,325	9,675
BRIS	Positif	Oversold	Negatif	Speculative Buy	1,250	1,205	1,145	1,310	1,355	1,125
BRPT	Positif	Oversold	Negatif	Speculative Buy	775	750	715	810	835	705
BUKA	Positif	Oversold	Negatif	Speculative Buy	263	257	253	267	273	249
CPIN	Negatif	Trading	Negatif	Sell	5,650	5,575	5,450	5,775	5,850	5,350
EMTK	Positif	Strong Buy	Negatif	Buy	1,130	1,100	1,060	1,170	1,200	1,040
ERAA	Positif	Oversold	Negatif	Speculative Buy	391	384	375	400	407	369
EXCL	Negatif	Oversold	Positif	Speculative Buy	2,185	2,150	2,095	2,240	2,275	2,065
GOTO	Positif	Strong Buy	Negatif	Buy	100	100	100	100	100	99
HMSP	Positif	Trading	Negatif	Hold	950	940	925	965	975	910
HRUM	Positif	Trading	Positif	Speculative Buy	1,750	1,725	1,680	1,795	1,820	1,655
ICBP	Negatif	OverBought	Positif	Sell	10,175	10,125	10,000	10,300	10,350	9,850
INCO	Negatif	Trading	Negatif	Sell	7,300	7,100	6,900	7,500	7,700	6,800
INDF	Negatif	OverBought	Positif	Sell	6,850	6,800	6,700	6,950	7,000	6,600
INDY	Positif	Trading	Positif	Speculative Buy	2,890	2,845	2,780	2,955	3,000	2,735
INKP	Positif	Trading	Negatif	Hold	9,300	9,125	8,800	9,625	9,800	8,650
INTP	Positif	Trading	Negatif	Hold	9,825	9,700	9,375	10,150	10,275	9,225
ITMG	Positif	Trading	Positif	Speculative Buy	40,850	40,400	39,650	41,600	42,050	39,050
JPFA	Positif	Oversold	Negatif	Speculative Buy	1,245	1,230	1,195	1,280	1,295	1,180
KLBF	Negatif	Trading	Negatif	Sell	2,075	2,010	1,935	2,150	2,215	1,905
MDKA	Negatif	Trading	Negatif	Sell	4,335	4,250	4,145	4,440	4,525	4,085
MEDC	Positif	Trading	Negatif	Hold	1,055	1,040	1,000	1,095	1,110	985
MIKA	Negatif	OverBought	Positif	Sell	3,050	2,970	2,810	3,210	3,290	2,770
MNCN	Positif	Oversold	Negatif	Speculative Buy	765	750	725	790	805	715
PGAS	Positif	Trading	Negatif	Hold	1,835	1,815	1,775	1,875	1,895	1,750
PTBA	Positif	Trading	Positif	Speculative Buy	3,680	3,650	3,580	3,750	3,780	3,525
SMGR	Positif	Oversold	Negatif	Speculative Buy	6,975	6,875	6,750	7,100	7,200	6,650
TBIG	Positif	Trading	Positif	Speculative Buy	2,285	2,245	2,185	2,345	2,385	2,150
TINS	Positif	Oversold	Negatif	Speculative Buy	1,185	1,170	1,135	1,220	1,235	1,115
TLKM	Positif	Oversold	Negatif	Speculative Buy	3,710	3,640	3,550	3,800	3,870	3,495
TOWR	Positif	Oversold	Negatif	Speculative Buy	1,105	1,085	1,065	1,125	1,145	1,050
TPIA	Positif	Trading	Positif	Speculative Buy	2,345	2,325	2,295	2,375	2,395	2,260
UNTR	Positif	Oversold	Negatif	Speculative Buy	27,575	27,100	26,575	28,100	28,575	26,175
UNVR	Negatif	Trading	Positif	Hold	4,645	4,600	4,515	4,730	4,775	4,445
WIKA	Positif	Oversold	Negatif	Speculative Buy	840	815	785	870	895	770

## OUR TEAM

**Sukarno Alatas**

Head of Equity Research

[sukarno@kiwoom.co.id](mailto:sukarno@kiwoom.co.id) | 021 5010 5800**Michelle Abadi**

Associate

[michelle@kiwoom.co.id](mailto:michelle@kiwoom.co.id) | 021 5010 5800**Abdul Azis Setyo Wibowo**

Equity Research Analyst

[azis@kiwoom.co.id](mailto:azis@kiwoom.co.id) | 021 5010 5800**Rizky Khaerunnisa**

Equity Research Analyst

[rizky@kiwoom.co.id](mailto:rizky@kiwoom.co.id) | 021 5010 5800**OTHER DISCLOSURES**

All Kiwoom's research reports made available to clients are simultaneously available on our own website <http://www.kiwoom.co.id/>. Not all research content is redistributed, e-mailed or made available to third-party aggregators. For all research reports available on a particular stock, please contact your sales representative. Any data discrepancies in this report could be the result of different calculations and/or adjustments.

**DISCLAIMER** This report has been prepared and issued by PT Kiwoom Sekuritas Indonesia. Information has been obtained from sources believed to be reliable but Kiwoom Securities do not warrant its completeness or accuracy. Forward-looking information or statements in this report contain information that is based on forecast of future results, estimates of amounts not yet determinable, assumptions, and therefore involve known and unknown risks and uncertainties which may cause the actual results, performance or achievements of their subject matter to be materially different from current expectations.

To the fullest extent allowed by law, PT Kiwoom Sekuritas Indonesia shall not be liable for any direct, indirect or consequential losses, loss of profits, damages, costs or expenses incurred or suffered by any person or organization arising from reliance on or use of any information contained on this report. The information that we provide should not be construed in any manner whatsoever as, personalized advice.

No mention of a particular security in this report constitutes a recommendation to buy, sell or hold that or any security, or that any particular security, portfolio of securities, transaction or investment strategy is suitable for any specific person. This report is being supplied to you solely for your information and may not be reproduced by, further distributed to or published in whole or in part by, any other person.