

JCI Range Today : 6,611 – 6,659 (Support), 6,747 – 6,806 (Resistance)



JCI closed lower and broke down below support again. Stochastic indicator is bearish, MACD histogram is moving negative (line is weakening) and volume is decreasing. If it returns to bearish, JCI is expected to continue weakening to the support at the range of 6,611 – 6,659. If JCI is able to move bullish, there is a chance for JCI to strengthen to the resistance at the range of 6,747 – 6,806.

BFIN

BFI Finance Indonesia Tbk, Indonesia, Jakarta: BFIN, D



(BFIN). The price closed higher with a bullish candle. The price has the opportunity to strengthen again to the nearest resistance. Stochastic indicator is bullish, MACD histogram is moving in the positive direction (sloping line) and volume is increasing. Confirmation to buy if the next candle is bullish again or buy on support if it goes down first. We suggest being careful if it fails to stay above the support level. **(Trading Buy)**

TRADING STRATEGY:

1. Target Price: The price has a bullish opportunity to test the resistance level 1,125. If it breaks level 1,125 then the price will go to level 1,140. We recommend to be careful if the price fails to break through or turn around the support area.

2. Stop Loss: To minimize the risk of loss, we recommend placing a stop loss at level 1,070.

Entry Buy : 1,085 – 1,105
Target Price : 1,125 – 1,140
Support : 1,075 – 1,085
Cutloss : 1,070

ESSA

Surya Esa Perkasa Tbk, Indonesia, Jakarta:ESSA, D



(ESSA). The price closed higher with a bullish candle. The price has the opportunity to test the nearest resistance. Stochastic indicator is bullish, MACD histogram is moving in the positive direction (line flat) and volume is increasing slightly. Confirmation to buy if the next candle is bullish again or buy on support if it goes down first. We suggest being careful if it fails to stay above the support level. **(Trading Buy)**

TRADING STRATEGY:

1. Target Price: The price has a bullish opportunity to test the resistance level 1,065. If it breaks level 1,065 then the price will go to level 1,080. We recommend to be careful if the price fails to break through or turn around the support area.

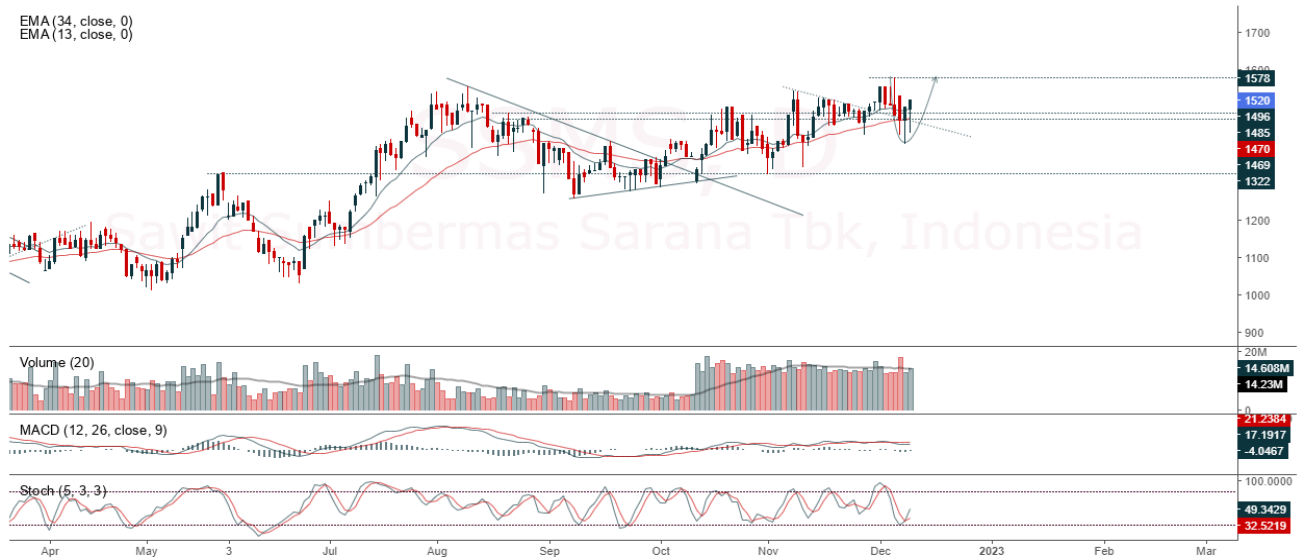
2. Stop Loss: To minimize the risk of loss, we recommend placing a stop loss at level 1,010.

Entry Buy : 1,035 – 1,045
 Target Price : 1,065 – 1,080
 Support : 1,015 – 1,035
 Cutloss : 1,010

SSMS

Sawit Sumbermas Sarana Tbk, Indonesia, Jakarta:SSMS, D

EMA (34, close, 0)
EMA (13, close, 0)



(SSMS). The price closed higher after touching support. The price has the opportunity to strengthen to the nearest resistance. Stochastic golden cross indicator, MACD histogram is moving in the positive direction (bearish line) and volume is increasing. Confirmation to buy if the next candle is bullish again or buy on support if it goes down first. We suggest being careful if it fails to stay above the support level. **(Trading Buy)**

TRADING STRATEGY:

1. Target Price: The price has a bullish opportunity to test the resistance level 1,555. If it breaks level 1,555 then the price will go to level 1,580. We recommend to be careful if the price fails to break through or turn around the support area.

2. Stop Loss: To minimize the risk of loss, we recommend placing a stop loss at level 1,475.

Entry Buy : 1,495 – 1,520
Target Price : 1,555 – 1,580
Support : 1,480 – 1,495
Cutloss : 1,475

TBIG

Tower Bersama Infrastructure Tbk PT, Indonesia, Jakarta:TBIG, D

EMA (13, close, 0)
EMA (34, close, 0)



(TBIG). The price closed higher with a bullish candle. The price has the opportunity to strengthen again to the nearest resistance. Stochastic indicator is bullish, MACD histogram is moving positive (bullish line) and volume is increasing. Confirmation to buy if the next candle is bullish again or buy on support if it goes down first. We suggest being careful if it fails to stay above the support level. **(Trading Buy)**

TRADING STRATEGY:

1. Target Price: The price has a bullish opportunity to test the resistance level 2,470. If it breaks level 2,470 then the price will go to level 2,500. We recommend to be careful if the price fails to break through or turn around the support area.

2. Stop Loss: To minimize the risk of loss, we recommend placing a stop loss at level 2,350.

Entry Buy : 2,390 – 2,410
Target Price : 2,470 – 2,500
Support : 2,360 – 2,390
Cutloss : 2,350

Forecast – Technical Analysis

Ticker	MA5	RSI Rec	MACD Trend	Recomm.	Pivot Point	Support		Resistance		Stop Loss Level
						1	2	1	2	
JCI	Positif	Oversold	Negatif	Speculative Buy	6,750	6,700	6,650	6,775	6,825	6,550
ADRO	Positif	Trading	Positif	Speculative Buy	3,695	3,650	3,585	3,760	3,805	3,530
AMRT	Positif	Trading	Negatif	Hold	2,515	2,500	2,485	2,530	2,545	2,450
ANTM	Positif	Trading	Negatif	Hold	1,950	1,925	1,900	1,975	2,000	1,875
ARTO	Positif	Oversold	Negatif	Speculative Buy	3,685	3,510	3,355	3,840	4,015	3,305
ASII	Positif	Oversold	Negatif	Speculative Buy	5,700	5,650	5,600	5,750	5,800	5,500
BBCA	Positif	Trading	Negatif	Hold	8,525	8,475	8,375	8,625	8,675	8,250
BBNI	Positif	Trading	Positif	Speculative Buy	9,525	9,500	9,375	9,650	9,675	9,250
BBRI	Positif	Trading	Positif	Speculative Buy	4,810	4,775	4,730	4,855	4,890	4,655
BBTN	Positif	Oversold	Negatif	Speculative Buy	1,380	1,350	1,315	1,415	1,445	1,295
BFIN	Positif	Trading	Negatif	Hold	1,100	1,085	1,070	1,115	1,130	1,055
BMRI	Positif	Trading	Negatif	Hold	9,950	9,825	9,725	10,050	10,175	9,575
BRIS	Positif	Oversold	Negatif	Speculative Buy	1,245	1,225	1,200	1,270	1,290	1,185
BRPT	Positif	Trading	Negatif	Hold	785	770	755	800	815	740
BUKA	Positif	Oversold	Negatif	Speculative Buy	265	263	259	269	271	255
CPIN	Positif	Trading	Negatif	Hold	5,725	5,700	5,600	5,825	5,850	5,525
EMTK	Positif	Strong Buy	Negatif	Buy	1,125	1,105	1,085	1,145	1,165	1,065
ERAA	Positif	Trading	Negatif	Hold	399	394	391	402	407	385
EXCL	Positif	Oversold	Positif	Buy	2,125	2,065	2,015	2,175	2,235	1,980
GOTO	Positif	Strong Buy	Negatif	Buy	93	93	93	93	93	92
HMSP	Positif	Trading	Negatif	Hold	950	930	915	965	985	900
HRUM	Negatif	Trading	Positif	Hold	1,750	1,740	1,725	1,765	1,775	1,700
ICBP	Negatif	OverBought	Positif	Sell	10,150	10,075	9,950	10,275	10,350	9,800
INCO	Positif	Trading	Negatif	Hold	7,250	7,150	7,050	7,350	7,450	6,950
INDF	Negatif	OverBought	Positif	Sell	6,900	6,850	6,775	6,975	7,025	6,675
INDY	Negatif	Trading	Positif	Hold	2,885	2,855	2,825	2,915	2,945	2,780
INKP	Positif	Oversold	Negatif	Speculative Buy	9,250	9,175	9,050	9,375	9,450	8,900
INTP	Positif	Trading	Negatif	Hold	9,900	9,850	9,750	10,000	10,050	9,600
ITMG	Positif	Trading	Positif	Speculative Buy	39,925	39,175	38,350	40,750	41,500	37,775
JPFA	Positif	Oversold	Negatif	Speculative Buy	1,250	1,230	1,205	1,275	1,295	1,185
KLBF	Negatif	OverBought	Negatif	Strong Sell	2,120	2,095	2,040	2,175	2,200	2,005
MDKA	Positif	Trading	Negatif	Hold	4,395	4,350	4,315	4,430	4,475	4,250
MEDC	Positif	Trading	Negatif	Hold	1,070	1,065	1,050	1,085	1,090	1,035
MIKA	Negatif	OverBought	Positif	Sell	3,010	2,935	2,850	3,095	3,170	2,805
MNCN	Positif	Oversold	Negatif	Speculative Buy	745	740	725	760	765	715
PGAS	Positif	Trading	Negatif	Hold	1,830	1,795	1,760	1,865	1,900	1,730
PTBA	Positif	Trading	Positif	Speculative Buy	3,650	3,615	3,580	3,685	3,720	3,525
SMGR	Positif	Oversold	Negatif	Speculative Buy	6,900	6,850	6,675	7,075	7,125	6,575
TBIG	Positif	Trading	Positif	Speculative Buy	2,350	2,275	2,180	2,445	2,520	2,145
TINS	Positif	Oversold	Negatif	Speculative Buy	1,175	1,160	1,145	1,190	1,205	1,130
TLKM	Positif	Oversold	Negatif	Speculative Buy	3,670	3,620	3,580	3,710	3,760	3,525
TOWR	Positif	Trading	Negatif	Hold	1,115	1,105	1,085	1,135	1,145	1,065
TPIA	Positif	Trading	Positif	Speculative Buy	2,350	2,320	2,280	2,390	2,420	2,245
UNTR	Positif	Oversold	Negatif	Speculative Buy	26,625	26,050	25,575	27,100	27,675	25,175
UNVR	Positif	Trading	Positif	Speculative Buy	4,635	4,610	4,575	4,670	4,695	4,505
WIKA	Positif	Oversold	Negatif	Speculative Buy	840	815	795	860	885	780

OUR TEAM

Sukarno Alatas

Head of Equity Research

sukarno@kiwoom.co.id | 021 5010 5800**Michelle Abadi**

Associate

michelle@kiwoom.co.id | 021 5010 5800**Abdul Azis Setyo Wibowo**

Equity Research Analyst

azis@kiwoom.co.id | 021 5010 5800**Rizky Khaerunnisa**

Equity Research Analyst

rizky@kiwoom.co.id | 021 5010 5800**OTHER DISCLOSURES**

All Kiwoom's research reports made available to clients are simultaneously available on our own website <http://www.kiwoom.co.id/>. Not all research content is redistributed, e-mailed or made available to third-party aggregators. For all research reports available on a particular stock, please contact your sales representative. Any data discrepancies in this report could be the result of different calculations and/or adjustments.

DISCLAIMER This report has been prepared and issued by PT Kiwoom Sekuritas Indonesia. Information has been obtained from sources believed to be reliable but Kiwoom Securities do not warrant its completeness or accuracy. Forward-looking information or statements in this report contain information that is based on forecast of future results, estimates of amounts not yet determinable, assumptions, and therefore involve known and unknown risks and uncertainties which may cause the actual results, performance or achievements of their subject matter to be materially different from current expectations.

To the fullest extent allowed by law, PT Kiwoom Sekuritas Indonesia shall not be liable for any direct, indirect or consequential losses, loss of profits, damages, costs or expenses incurred or suffered by any person or organization arising from reliance on or use of any information contained on this report. The information that we provide should not be construed in any manner whatsoever as, personalized advice.

No mention of a particular security in this report constitutes a recommendation to buy, sell or hold that or any security, or that any particular security, portfolio of securities, transaction or investment strategy is suitable for any specific person. This report is being supplied to you solely for your information and may not be reproduced by, further distributed to or published in whole or in part by, any other person.