

JCI Range Today : 6,734 – 6,747 (Support), 6,862 – 6,892 (Resistance)

Jakarta Stock Exchange Composite Index, Indonesia, Jakarta:JKSE, D



JCI managed to close higher by forming a swing. The stochastic golden cross indicator, MACD histogram is negative, tends to go up (the line is weakening) and volume has increased significantly. If it returns to bearish, JCI is expected to continue weakening to the support at the range of 6,734 – 6,747. If JCI is able to move bullish, there is a chance for JCI to strengthen again to the resistance at the range of 6,862 – 6,892.

AKRA

Akr Corporindo Tbk, Indonesia, Jakarta:AKRA, D

EMA (13, close, 0)
EMA (34, close, 0)



(AKRA) The price closed higher with a bullish candle. The price has the opportunity to strengthen again to the nearest resistance. Stochastic indicator is bullish, MACD histogram is moving positive (golden cross line) and volume is increasing slightly. Confirmation to buy if the next candle is bullish again or buy on support if it goes down first. We suggest being careful if it fails to stay above the support level. **(Trading Buy)**

TRADING STRATEGY:

1. Target Price: The price has a bullish opportunity to test the resistance level 1,455. If it breaks level 1,455 then the price will go to level 1,495. We recommend to be careful if the price fails to break through or turn around the support area.

2. Stop Loss: To minimize the risk of loss, we recommend placing a stop loss at level 1,390.

Entry Buy : 1,405 – 1,430
Target Price : 1,455 – 1,495
Support : 1,395 – 1,405
Cutloss : 1,390

ASII

Astra International Tbk, Indonesia, Jakarta:ASII, D

EMA (13, close, 0)
EMA (34, close, 0)



(ASII) The price closed higher with a bullish candle. The price has the opportunity to strengthen to the nearest resistance. Stochastic golden cross indicator, MACD histogram is moving in the positive direction (bearish line) and volume is increasing. Confirmation to buy if the next candle is bullish again or buy on support if it goes down first. We suggest being careful if it fails to stay above the support level. **(Trading Buy)**

TRADING STRATEGY:

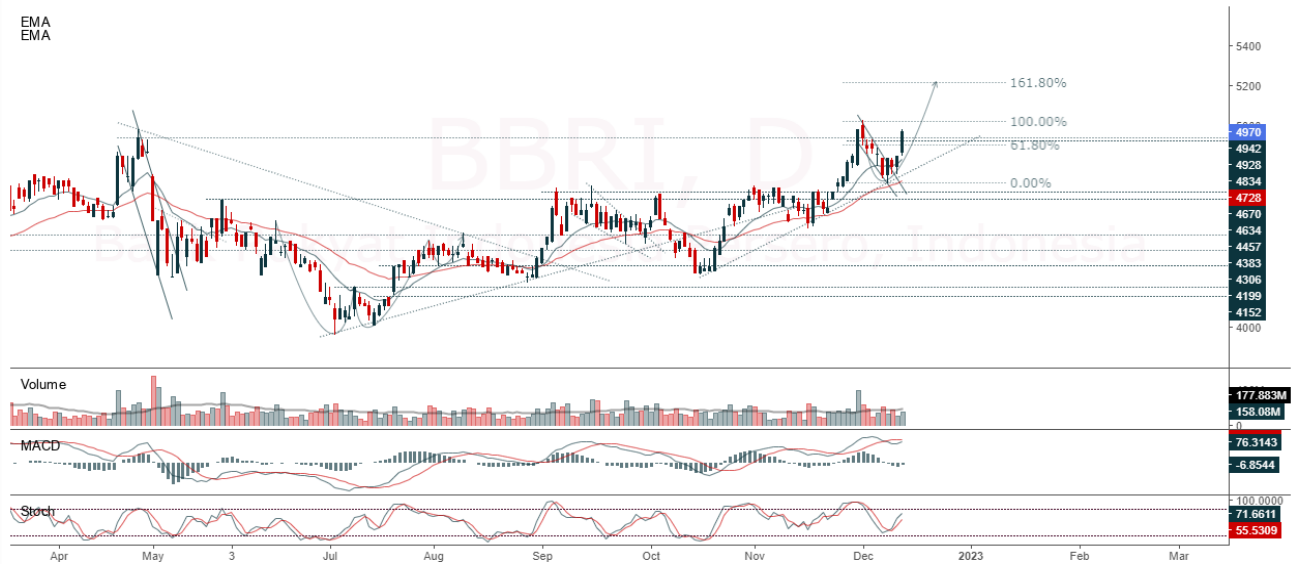
1. Target Price: The price has a bullish opportunity to test the resistance level 5,950. If it breaks level 5,950 then the price will go to level 6,025. We recommend to be careful if the price fails to break through or turn around the support area.

2. Stop Loss: To minimize the risk of loss, we recommend placing a stop loss at level 5,650.

Entry Buy : 5,750 – 5,825
Target Price : 5,950 – 6,025
Support : 5,675 – 5,750
Cutloss : 5,650

BBRI

Bank Rakyat Indonesia Persero, Indonesia, Jakarta:BBRI, D



(BBRI) The price closed higher with a bullish candle. The price has the opportunity to test the nearest resistance. Stochastic indicator is bullish, MACD histogram is moving positive (golden cross line) and volume is increasing. Confirmation to buy if the next candle is bullish again or buy on support if it goes down first. We suggest being careful if it fails to stay above the support level. **(Trading Buy)**

TRADING STRATEGY:

1.Target Price: The price has a bullish opportunity to test the resistance level 5,075. If it breaks level 5,075 then the price will go to level 5,125. We recommend to be careful if the price fails to break through or turn around the support area.

2. Stop Loss: To minimize the risk of loss, we recommend placing a stop loss at level 4,840.

Entry Buy : 4,890 – 4,970
 Target Price : 5,075 – 5,125
 Support : 4,850 – 4,890
 Cutloss : 4,840

TLKM

Telkom Indonesia (Persero) Tbk PT, Indonesia, Jakarta:TLKM, D



(TLKM) The price closed higher with a bullish candle. The price has the opportunity to strengthen again to the nearest resistance. Stochastic indicator is bullish, MACD histogram is moving in the positive direction (bullish line) and volume is increasing. Confirmation to buy if the next candle is bullish again or buy on support if it goes down first. We suggest being careful if it fails to stay above the support level. **(Trading Buy)**

TRADING STRATEGY:

- 1.Target Price: The price has a bullish opportunity to test the resistance level 3,840. If it breaks level 3,840 then the price will go to level 3,890. We recommend to be careful if the price fails to break through or turn around the support area.
2. Stop Loss: To minimize the risk of loss, we recommend placing a stop loss at level 3,670.

Entry Buy : 3,720 – 3,750
 Target Price : 3,840 – 3,890
 Support : 3,680 – 3,720
 Cutloss : 3,670

Forecast – Technical Analysis

Ticker	MA5	RSI Rec	MACD Trend	Recomm.	Pivot Point	Support		Resistance		Stop Loss Level
						1	2	1	2	
JCI	Positif	Oversold	Negatif	Speculative Buy	6,775	6,700	6,650	6,825	6,875	6,550
ADRO	Positif	Trading	Positif	Speculative Buy	3,765	3,740	3,715	3,790	3,815	3,660
AMRT	Positif	Oversold	Negatif	Speculative Buy	2,585	2,520	2,455	2,650	2,715	2,420
ANTM	Positif	Trading	Negatif	Hold	1,945	1,930	1,910	1,965	1,980	1,885
ARTO	Positif	Oversold	Negatif	Speculative Buy	3,710	3,300	2,890	4,120	4,530	2,845
ASII	Positif	Oversold	Negatif	Speculative Buy	5,775	5,650	5,550	5,875	6,000	5,475
BBCA	Positif	Trading	Negatif	Hold	8,650	8,600	8,500	8,750	8,800	8,375
BBNI	Positif	Trading	Negatif	Hold	9,600	9,550	9,450	9,700	9,750	9,300
BBRI	Positif	Trading	Negatif	Hold	4,915	4,850	4,775	4,990	5,050	4,705
BBTN	Positif	Oversold	Negatif	Speculative Buy	1,395	1,385	1,375	1,405	1,415	1,355
BFIN	Negatif	Trading	Negatif	Sell	1,105	1,085	1,070	1,120	1,140	1,050
BMRI	Positif	Trading	Negatif	Hold	9,875	9,725	9,650	9,950	10,100	9,500
BRIS	Positif	Oversold	Negatif	Speculative Buy	1,270	1,245	1,220	1,295	1,320	1,200
BRPT	Negatif	Trading	Negatif	Sell	775	760	745	790	805	735
BUKA	Positif	Oversold	Negatif	Speculative Buy	273	261	251	283	295	247
CPIN	Negatif	Trading	Negatif	Sell	5,850	5,800	5,750	5,900	5,950	5,650
EMTK	Positif	Strong Buy	Negatif	Buy	1,095	1,020	955	1,160	1,235	940
ERAA	Negatif	Trading	Positif	Hold	405	400	395	410	415	389
EXCL	Positif	Oversold	Negatif	Speculative Buy	2,050	2,000	1,960	2,090	2,140	1,930
GOTO	Positif	Strong Buy	Negatif	Buy	93	77	66	104	120	65
HMSP	Negatif	Trading	Negatif	Sell	950	945	935	960	965	920
HRUM	Positif	OverBought	Positif	Hold	1,785	1,760	1,730	1,815	1,840	1,705
ICBP	Positif	OverBought	Positif	Hold	10,325	10,250	10,125	10,450	10,525	9,975
INCO	Positif	Trading	Negatif	Hold	7,300	7,200	7,050	7,450	7,550	6,950
INDF	Negatif	OverBought	Positif	Sell	6,925	6,900	6,800	7,025	7,050	6,700
INDY	Negatif	Trading	Positif	Hold	2,900	2,875	2,850	2,925	2,950	2,805
INKP	Positif	Trading	Negatif	Hold	9,700	9,550	9,400	9,850	10,000	9,275
INTP	Positif	Trading	Negatif	Hold	10,000	9,950	9,800	10,150	10,200	9,650
ITMG	Positif	Trading	Negatif	Hold	39,475	39,275	39,050	39,700	39,900	38,450
JPFA	Negatif	Trading	Negatif	Sell	1,285	1,270	1,255	1,300	1,315	1,235
KLBF	Negatif	OverBought	Positif	Sell	2,135	2,095	2,055	2,175	2,215	2,020
MDKA	Positif	Trading	Negatif	Hold	4,320	4,270	4,210	4,380	4,430	4,145
MEDC	Negatif	Trading	Positif	Hold	1,140	1,125	1,105	1,160	1,175	1,090
MIKA	Negatif	OverBought	Positif	Sell	3,060	3,020	2,980	3,100	3,140	2,935
MNCN	Positif	Oversold	Negatif	Speculative Buy	745	735	725	755	765	715
PGAS	Positif	Trading	Negatif	Hold	1,825	1,815	1,805	1,835	1,845	1,780
PTBA	Negatif	Trading	Positif	Hold	3,760	3,720	3,680	3,800	3,840	3,625
SMGR	Positif	Oversold	Negatif	Speculative Buy	6,900	6,675	6,525	7,050	7,275	6,425
TBIG	Positif	Trading	Positif	Speculative Buy	2,325	2,295	2,265	2,355	2,385	2,230
TINS	Positif	Oversold	Negatif	Speculative Buy	1,180	1,165	1,155	1,190	1,205	1,135
TLKM	Negatif	Oversold	Negatif	Speculative Buy	3,730	3,665	3,620	3,775	3,840	3,565
TOWR	Positif	Oversold	Negatif	Speculative Buy	1,100	1,085	1,075	1,110	1,125	1,060
TPIA	Negatif	Trading	Positif	Hold	2,430	2,400	2,350	2,480	2,510	2,315
UNTR	Positif	Oversold	Negatif	Speculative Buy	26,850	26,575	26,325	27,100	27,375	25,925
UNVR	Positif	Trading	Positif	Speculative Buy	4,695	4,665	4,605	4,755	4,785	4,535
WIKA	Positif	Oversold	Negatif	Speculative Buy	820	805	800	825	840	785

OUR TEAM

Sukarno Alatas

Head of Equity Research

sukarno@kiwoom.co.id | 021 5010 5800**Michelle Abadi**

Associate

michelle@kiwoom.co.id | 021 5010 5800**Abdul Azis Setyo Wibowo**

Equity Research Analyst

azis@kiwoom.co.id | 021 5010 5800**Rizky Khaerunnisa**

Equity Research Analyst

rizky@kiwoom.co.id | 021 5010 5800**OTHER DISCLOSURES**

All Kiwoom's research reports made available to clients are simultaneously available on our own website <http://www.kiwoom.co.id/>. Not all research content is redistributed, e-mailed or made available to third-party aggregators. For all research reports available on a particular stock, please contact your sales representative. Any data discrepancies in this report could be the result of different calculations and/or adjustments.

DISCLAIMER This report has been prepared and issued by PT Kiwoom Sekuritas Indonesia. Information has been obtained from sources believed to be reliable but Kiwoom Securities do not warrant its completeness or accuracy. Forward-looking information or statements in this report contain information that is based on forecast of future results, estimates of amounts not yet determinable, assumptions, and therefore involve known and unknown risks and uncertainties which may cause the actual results, performance or achievements of their subject matter to be materially different from current expectations.

To the fullest extent allowed by law, PT Kiwoom Sekuritas Indonesia shall not be liable for any direct, indirect or consequential losses, loss of profits, damages, costs or expenses incurred or suffered by any person or organization arising from reliance on or use of any information contained on this report. The information that we provide should not be construed in any manner whatsoever as, personalized advice.

No mention of a particular security in this report constitutes a recommendation to buy, sell or hold that or any security, or that any particular security, portfolio of securities, transaction or investment strategy is suitable for any specific person. This report is being supplied to you solely for your information and may not be reproduced by, further distributed to or published in whole or in part by, any other person.