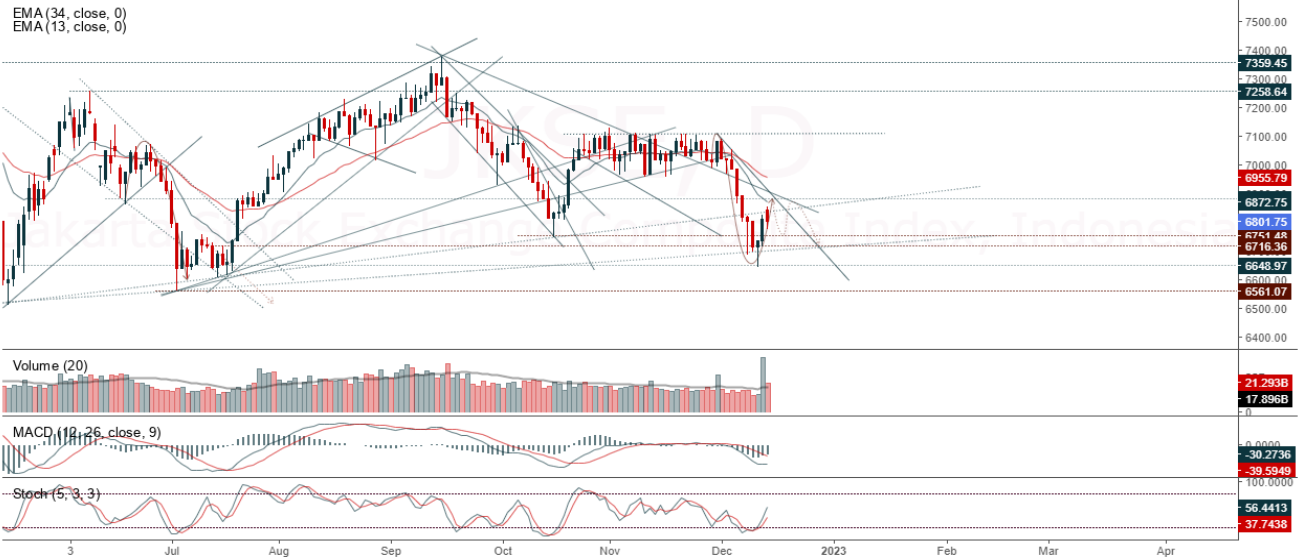


JCI Range Today : 6,734 – 6,747 (Support), 6,854 – 6,891 (Resistance)

Jakarta Stock Exchange Composite Index, Indonesia, Jakarta:JKSE, D

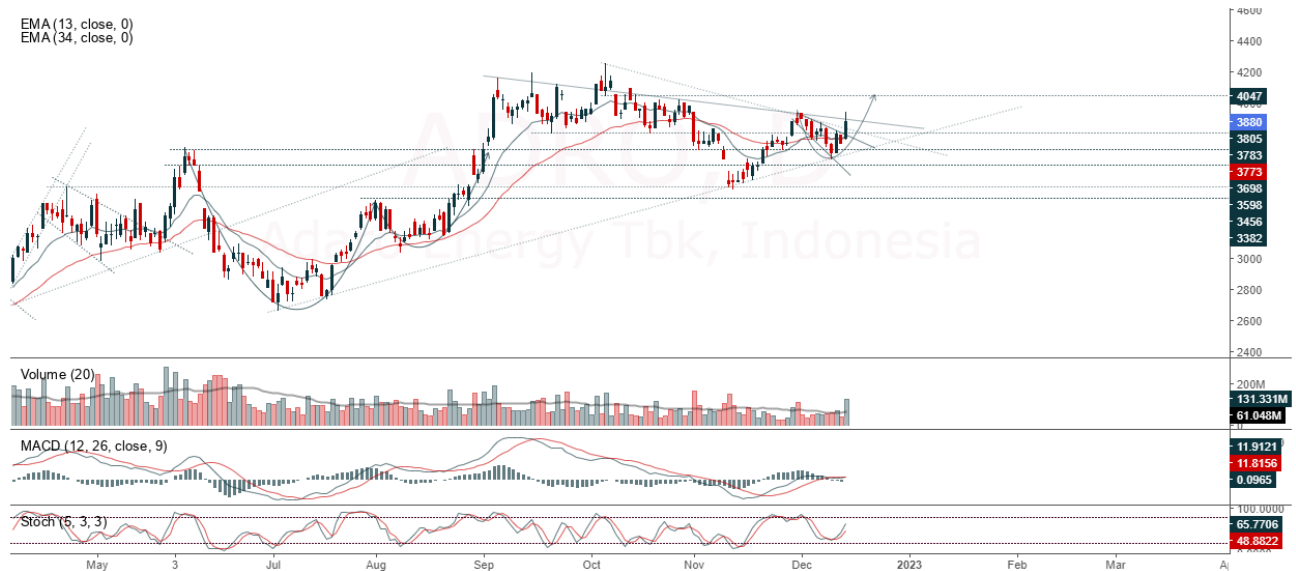


JCI closed slightly lower with a bearish candle. The stochastic golden cross indicator, MACD histogram is negative, tends to go up (the line weakens) and volume goes down. If it returns to bearish, JCI is expected to continue weakening to the support at the range of 6,734 – 6,747. If JCI is able to move bullish, there is a chance for JCI to strengthen again to the resistance at the range of 6,854 – 6,891.

ADRO

Adaro Energy Tbk, Indonesia, Jakarta:ADRO, D

EMA (13, close, 0)
EMA (34, close, 0)



(ADRO) The price closed higher with a bullish candle. The price has the opportunity to strengthen again to the nearest resistance. Stochastic indicator is bullish, MACD histogram is moving positive (bullish line) and volume is increasing. Confirmation to buy if the next candle is bullish again or buy on support if it goes down first. We suggest being careful if it fails to stay above the support level. **(Trading Buy)**

TRADING STRATEGY:

1. Target Price: The price has a bullish opportunity to test the resistance level 3,940. If it breaks level 3,940 then the price will go to level 3,980. We recommend to be careful if the price fails to break through or turn around the support area.

2. Stop Loss: To minimize the risk of loss, we recommend placing a stop loss at level 3,780.

Entry Buy : 3,820 – 3,880
 Target Price : 3,940 – 3,980
 Support : 3,790 – 3,820
 Cutloss : 3,780

CTRA

Ciputra Development Tbk, Indonesia, Jakarta:CTRA, D

EMA (13, close, 0)
EMA (34, close, 0)



(CTRA) The price closed higher with a bearish candle. The price has the opportunity to strengthen to the nearest resistance. Stochastic indicator is neutral, MACD histogram is moving positive (bullish line) and volume is increasing. Confirmation to buy if the next candle is bullish again or buy on support if it goes down first. We suggest being careful if it fails to stay above the support level. **(Trading Buy)**

TRADING STRATEGY:

1. Target Price: The price has a bullish opportunity to test the resistance level 1,030. If it breaks level 1,030 then the price will go to level 1,045. We recommend to be careful if the price fails to break through or turn around the support area.

2. Stop Loss: To minimize the risk of loss, we recommend placing a stop loss at level 975.

Entry Buy : 990 – 1,010
Target Price : 1,030 – 1,045
Support : 980 – 990
Cutloss : 975

TBIG

Tower Bersama Infrastructure Tbk PT, Indonesia, Jakarta:TBIG, D

EMA (13, close, 0)
EMA (34, close, 0)



(TBIG) The price closed higher with a bullish candle. The price has the opportunity to test the nearest resistance. Stochastic indicator is bullish, MACD histogram is moving positive (golden cross line) and volume is neutral. Confirmation to buy if the next candle is bullish again or buy on support if it goes down first. We suggest being careful if it fails to stay above the support level. **(Trading Buy)**

TRADING STRATEGY:

1. Target Price: The price has a bullish opportunity to test the resistance level 2,390. If it breaks level 2,390 then the price will go to level 2,420. We recommend to be careful if the price fails to break through or turn around the support area.

2. Stop Loss: To minimize the risk of loss, we recommend placing a stop loss at level 2,270.

Entry Buy : 2,300 – 2,340
Target Price : 2,390 – 2,420
Support : 2,280 – 2,300
Cutloss : 2,270

TKIM

Pabrik Kertas Tjiwi Kimia Tbk, Indonesia, Jakarta:TKIM, D

EMA (13, close, 0)
EMA (34, close, 0)



(TKIM) The price closed higher with a bullish candle. The price has the opportunity to strengthen again to the nearest resistance. The stochastic indicator is bullish, MACD histogram is moving in the positive direction (bearish line) and volume is increasing slightly. Confirmation to buy if the next candle is bullish again or buy on support if it goes down first. We suggest being careful if it fails to stay above the support level. **(Trading Buy)**

TRADING STRATEGY:

- 1.Target Price: The price has a bullish opportunity to test the resistance level 8,075. If it breaks level 8,075 then the price will go to level 8,150. We recommend to be careful if the price fails to break through or turn around the support area.
2. Stop Loss: To minimize the risk of loss, we recommend placing a stop loss at level 7,750.

Entry Buy : 7,825 – 7,925
 Target Price : 8,075 – 8,150
 Support : 7,775 – 7,825
 Cutloss : 7,750

Forecast – Technical Analysis

Ticker	MA5	RSI Rec	MACD Trend	Recomm.	Pivot Point	Support		Resistance		Stop Loss Level
						1	2	1	2	
JCI	Positif	Oversold	Negatif	Speculative Buy	6,825	6,775	6,750	6,850	6,900	6,625
ADRO	Positif	Trading	Positif	Speculative Buy	3,840	3,735	3,660	3,915	4,020	3,605
AMRT	Positif	Trading	Negatif	Hold	2,595	2,580	2,565	2,610	2,625	2,525
ANTM	Negatif	Trading	Negatif	Sell	1,935	1,920	1,905	1,950	1,965	1,875
ARTO	Positif	Trading	Negatif	Hold	4,185	3,965	3,805	4,345	4,565	3,745
ASII	Negatif	Oversold	Negatif	Speculative Buy	5,875	5,800	5,700	5,975	6,050	5,600
BBCA	Negatif	Trading	Negatif	Sell	8,625	8,525	8,450	8,700	8,800	8,300
BBNI	Negatif	OverBought	Negatif	Strong Sell	9,600	9,475	9,325	9,750	9,875	9,200
BBRI	Negatif	OverBought	Positif	Sell	4,965	4,925	4,835	5,050	5,100	4,760
BBTN	Positif	Oversold	Negatif	Speculative Buy	1,400	1,385	1,375	1,410	1,425	1,350
BFIN	Negatif	Trading	Negatif	Sell	1,080	1,065	1,040	1,105	1,120	1,025
BMRI	Positif	Trading	Negatif	Hold	10,025	9,950	9,875	10,100	10,175	9,725
BRIS	Positif	Trading	Negatif	Hold	1,245	1,210	1,160	1,295	1,330	1,145
BRPT	Negatif	Trading	Negatif	Sell	765	750	740	775	790	730
BUKA	Negatif	Trading	Negatif	Sell	283	279	273	289	293	268
CPIN	Negatif	Trading	Positif	Hold	5,900	5,850	5,800	5,950	6,000	5,700
EMTK	Positif	Oversold	Negatif	Speculative Buy	1,110	1,060	1,005	1,165	1,215	990
ERAA	Negatif	Trading	Positif	Hold	403	402	399	406	407	393
EXCL	Positif	Oversold	Negatif	Speculative Buy	2,060	2,030	2,000	2,090	2,120	1,970
GOTO	Positif	Oversold	Negatif	Speculative Buy	98	93	87	104	109	86
HMSP	Positif	Trading	Negatif	Hold	950	935	925	960	975	910
HRUM	Negatif	Trading	Positif	Hold	1,735	1,710	1,680	1,765	1,790	1,650
ICBP	Positif	OverBought	Positif	Hold	10,275	10,225	10,100	10,400	10,450	9,950
INCO	Negatif	Trading	Negatif	Sell	7,300	7,225	7,175	7,350	7,425	7,050
INDF	Negatif	OverBought	Positif	Sell	6,950	6,900	6,850	7,000	7,050	6,750
INDY	Negatif	Trading	Positif	Hold	2,915	2,870	2,845	2,940	2,985	2,800
INKP	Negatif	Trading	Negatif	Sell	9,650	9,550	9,400	9,800	9,900	9,250
INTP	Negatif	Trading	Negatif	Sell	10,000	9,925	9,875	10,050	10,125	9,725
ITMG	Positif	Trading	Negatif	Hold	40,175	39,575	39,125	40,625	41,225	38,525
JPFA	Negatif	Trading	Negatif	Sell	1,285	1,275	1,255	1,305	1,315	1,235
KLBF	Negatif	Trading	Positif	Hold	2,120	2,085	2,060	2,145	2,180	2,025
MDKA	Negatif	Trading	Negatif	Sell	4,395	4,345	4,305	4,435	4,485	4,240
MEDC	Negatif	Trading	Positif	Hold	1,155	1,145	1,125	1,175	1,185	1,105
MIKA	Positif	OverBought	Positif	Hold	3,090	3,040	3,000	3,130	3,180	2,955
MNCN	Positif	Oversold	Negatif	Speculative Buy	745	730	720	755	770	705
PGAS	Positif	Trading	Negatif	Hold	1,835	1,810	1,790	1,855	1,880	1,765
PTBA	Negatif	Trading	Positif	Hold	3,785	3,730	3,695	3,820	3,875	3,640
SMGR	Positif	Oversold	Negatif	Speculative Buy	7,000	6,900	6,750	7,150	7,250	6,650
TBIG	Negatif	Trading	Positif	Hold	2,315	2,280	2,245	2,350	2,385	2,210
TINS	Negatif	Oversold	Negatif	Speculative Buy	1,180	1,170	1,160	1,190	1,200	1,140
TLKM	Negatif	Oversold	Negatif	Speculative Buy	3,785	3,745	3,705	3,825	3,865	3,645
TOWR	Negatif	Trading	Negatif	Sell	1,115	1,100	1,085	1,130	1,145	1,070
TPIA	Negatif	OverBought	Positif	Sell	2,455	2,440	2,405	2,490	2,505	2,370
UNTR	Positif	Oversold	Negatif	Speculative Buy	26,975	26,575	26,450	27,100	27,500	26,050
UNVR	Positif	Trading	Positif	Speculative Buy	4,710	4,695	4,660	4,745	4,760	4,590
WIKA	Positif	Oversold	Negatif	Speculative Buy	805	785	765	825	845	750

OUR TEAM

Sukarno Alatas

Head of Equity Research

sukarno@kiwoom.co.id | 021 5010 5800**Michelle Abadi**

Associate

michelle@kiwoom.co.id | 021 5010 5800**Abdul Azis Setyo Wibowo**

Equity Research Analyst

azis@kiwoom.co.id | 021 5010 5800**Rizky Khaerunnisa**

Equity Research Analyst

rizky@kiwoom.co.id | 021 5010 5800**OTHER DISCLOSURES**

All Kiwoom's research reports made available to clients are simultaneously available on our own website <http://www.kiwoom.co.id/>. Not all research content is redistributed, e-mailed or made available to third-party aggregators. For all research reports available on a particular stock, please contact your sales representative. Any data discrepancies in this report could be the result of different calculations and/or adjustments.

DISCLAIMER This report has been prepared and issued by PT Kiwoom Sekuritas Indonesia. Information has been obtained from sources believed to be reliable but Kiwoom Securities do not warrant its completeness or accuracy. Forward-looking information or statements in this report contain information that is based on forecast of future results, estimates of amounts not yet determinable, assumptions, and therefore involve known and unknown risks and uncertainties which may cause the actual results, performance or achievements of their subject matter to be materially different from current expectations.

To the fullest extent allowed by law, PT Kiwoom Sekuritas Indonesia shall not be liable for any direct, indirect or consequential losses, loss of profits, damages, costs or expenses incurred or suffered by any person or organization arising from reliance on or use of any information contained on this report. The information that we provide should not be construed in any manner whatsoever as, personalized advice.

No mention of a particular security in this report constitutes a recommendation to buy, sell or hold that or any security, or that any particular security, portfolio of securities, transaction or investment strategy is suitable for any specific person. This report is being supplied to you solely for your information and may not be reproduced by, further distributed to or published in whole or in part by, any other person.