

**JCI Range Today : 6,683 – 6,695 (Support), 6,801 – 6,826 (Resistance)**

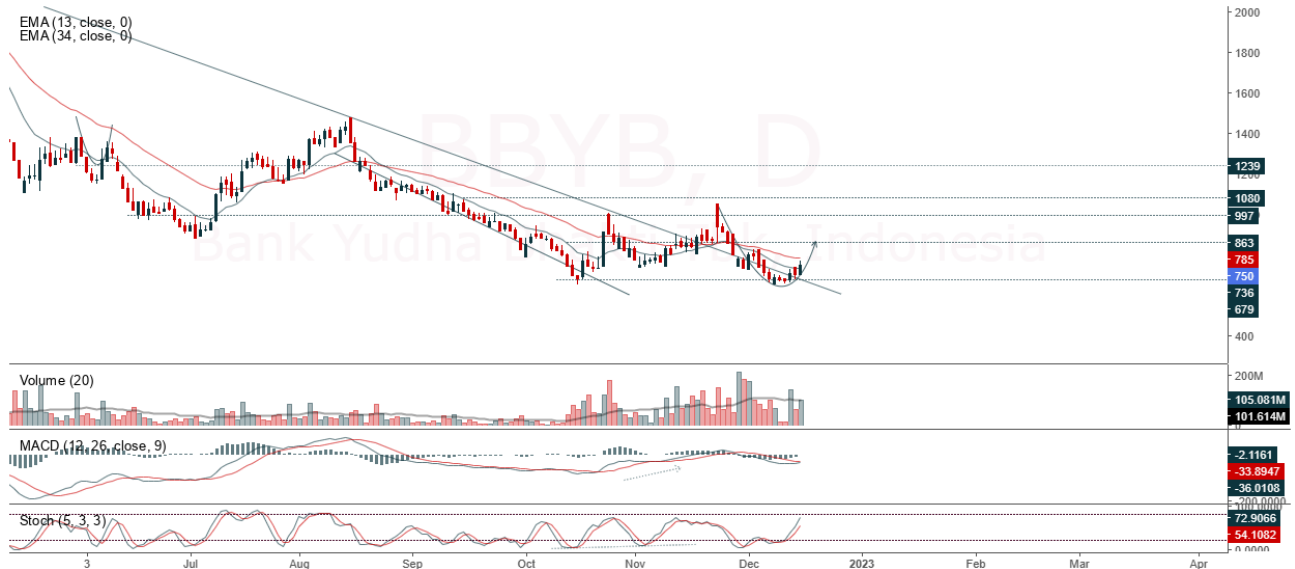
Jakarta Stock Exchange Composite Index, Indonesia, Jakarta:JKSE, D



JCI closed lower with a bearish candle. The stochastic indicator is neutral, MACD histogram is negative, tends to go up (the line is weakening) and volume is increasing. If it returns to bearish, JCI is expected to continue weakening to the support at the range of 6,683 – 6,695. If JCI is able to move bullish, there is a chance for JCI to strengthen to the resistance at the range of 6,801 – 6,826.

**BBYB**

Bank Yudha Bhakti Tbk, Indonesia, Jakarta:BBYB, D



**(BBYB)** The price closed higher with a bullish candle. The price has the opportunity to strengthen again to the nearest resistance. Stochastic indicator is bullish, MACD histogram is moving in the positive direction (bullish line) and volume is increasing. Confirmation to buy if the next candle is bullish again or buy on support if it goes down first. We suggest being careful if it fails to stay above the support level. **(Trading Buy)**

**TRADING STRATEGY:**

1. Target Price: The price has a bullish opportunity to test the resistance level 770. If it breaks level 770 then the price will go to level 790. We recommend to be careful if the price fails to break through or turn around the support area.

2. Stop Loss: To minimize the risk of loss, we recommend placing a stop loss at level 725.

Entry Buy : 740 – 750  
Target Price : 770 – 790  
Support : 730 – 740  
Cutloss : 725

**ENRG**

Energi Mega Persada Tbk, Indonesia, Jakarta:ENRG, D

EMA (13, close, 0)  
EMA (34, close, 0)



**(ENRG)** The price closed higher with a bullish candle. The price has the opportunity to strengthen to the nearest resistance. Stochastic indicator is bullish, MACD histogram is moving in the positive direction (bullish line) and volume is decreasing. Confirmation to buy if the next candle is bullish again or buy on support if it goes down first. We suggest being careful if it fails to stay above the support level. **(Trading Buy)**

**TRADING STRATEGY:**

1. Target Price: The price has a bullish opportunity to test the resistance level 330. If it breaks level 330 then the price will go to level 330. We recommend to be careful if the price fails to break through or turn around the support area.

2. Stop Loss: To minimize the risk of loss, we recommend placing a stop loss at level 304.

Entry Buy : 314 – 320  
Target Price : 330 – 334  
Support : 306 – 314  
Cutloss : 304

## SMGR

Semen Indonesia Persero Tbk, Indonesia, Jakarta:SMGR, D

EMA (13, close, 0)  
EMA (34, close, 0)



**(SMGR)** The price closed higher with a bullish candle. The price has the opportunity to test the nearest resistance. Stochastic indicator is bullish, MACD histogram is moving in the positive direction (golden cross potential line) and volume is increasing. Confirmation to buy if the next candle is bullish again or buy on support if it goes down first. We suggest being careful if it fails to stay above the support level. **(Trading Buy)**

### TRADING STRATEGY:

1. Target Price: The price has a bullish opportunity to test the resistance level 7,400. If it breaks level 7,400 then the price will go to level 7,475. We recommend to be careful if the price fails to break through or turn around the support area.

2. Stop Loss: To minimize the risk of loss, we recommend placing a stop loss at level 6,950.

Entry Buy : 7,100 – 7,225  
Target Price : 7,400 – 7,475  
Support : 6,975 – 7,100  
Cutloss : 6,950

**WIKA**

Wijaya Karya Tbk, Indonesia, Jakarta:WIKA, D

EMA (13, close, 0)  
EMA (34, close, 0)



**(WIKA)** The price closed higher with a bullish candle. The price has the opportunity to strengthen again to the nearest resistance. Stochastic indicator is bullish, MACD histogram is moving in the positive direction (bearish line) and volume is neutral. Confirmation to buy if the next candle is bullish again or buy on support if it goes down first. We suggest being careful if it fails to stay above the support level. **(Trading Buy)**

**TRADING STRATEGY:**

- 1.Target Price: The price has a bullish opportunity to test the resistance level 835. If it breaks level 835 then the price will go to level 850. We recommend to be careful if the price fails to break through or turn around the support area.
2. Stop Loss: To minimize the risk of loss, we recommend placing a stop loss at level 790.

Entry Buy : 805 – 820  
Target Price : 835 – 850  
Support : 795 – 805  
Cutloss : 790

**Forecast – Technical Analysis**

Ticker	MAS	RSI Rec	MACD Trend	Recomm.	Pivot Point	Support		Resistance		Stop Loss Level
						1	2	1	2	
JCI	Positif	Oversold	Negatif	Speculative Buy	6,775	6,750	6,725	6,775	6,800	6,625
ADRO	Negatif	Trading	Positif	Hold	3,905	3,835	3,785	3,955	4,025	3,725
AMRT	Positif	Trading	Negatif	Hold	2,575	2,550	2,525	2,600	2,625	2,485
ANTM	Positif	Trading	Negatif	Hold	1,935	1,930	1,915	1,950	1,955	1,885
ARTO	Negatif	Trading	Negatif	Sell	4,020	3,885	3,730	4,175	4,310	3,670
ASII	Negatif	Oversold	Negatif	Speculative Buy	5,800	5,775	5,700	5,875	5,900	5,625
BBCA	Negatif	Trading	Negatif	Sell	8,550	8,500	8,450	8,600	8,650	8,325
BBNI	Negatif	Trading	Negatif	Sell	9,500	9,375	9,275	9,600	9,725	9,125
BBRI	Negatif	OverBought	Positif	Sell	4,910	4,875	4,850	4,935	4,970	4,775
BBTN	Positif	Oversold	Negatif	Speculative Buy	1,395	1,380	1,370	1,405	1,420	1,345
BFIN	Negatif	Trading	Negatif	Sell	1,065	1,055	1,045	1,075	1,085	1,030
BMRI	Positif	Trading	Negatif	Hold	9,925	9,850	9,800	9,975	10,050	9,650
BRIS	Positif	Oversold	Negatif	Speculative Buy	1,215	1,200	1,185	1,230	1,245	1,165
BRPT	Positif	Oversold	Negatif	Speculative Buy	760	750	735	775	785	725
BUKA	Negatif	Trading	Negatif	Sell	281	277	271	287	291	266
CPIN	Negatif	Trading	Positif	Hold	5,825	5,725	5,650	5,900	6,000	5,550
EMTK	Positif	Oversold	Negatif	Speculative Buy	1,070	1,045	1,025	1,090	1,115	1,005
ERAA	Negatif	Trading	Positif	Hold	400	396	392	404	408	386
EXCL	Positif	Oversold	Negatif	Speculative Buy	2,065	2,045	2,025	2,085	2,105	1,990
GOTO	Positif	Oversold	Negatif	Speculative Buy	95	92	88	99	102	86
HMSP	Positif	Trading	Negatif	Hold	940	935	920	955	960	905
HRUM	Negatif	Trading	Positif	Hold	1,745	1,730	1,710	1,765	1,780	1,685
ICBP	Negatif	OverBought	Negatif	Strong Sell	10,300	10,225	10,150	10,375	10,450	9,975
INCO	Positif	Trading	Negatif	Hold	7,300	7,225	7,150	7,375	7,450	7,025
INDF	Negatif	OverBought	Positif	Sell	6,950	6,925	6,850	7,025	7,050	6,750
INDY	Positif	Trading	Positif	Speculative Buy	2,910	2,885	2,860	2,935	2,960	2,815
INKP	Negatif	Trading	Negatif	Sell	9,700	9,625	9,525	9,800	9,875	9,375
INTP	Negatif	Trading	Negatif	Sell	9,900	9,850	9,750	10,000	10,050	9,600
ITMG	Positif	Trading	Negatif	Hold	40,400	40,050	39,675	40,775	41,125	39,075
JPFA	Negatif	Trading	Positif	Hold	1,280	1,265	1,255	1,290	1,305	1,235
KLBF	Positif	Trading	Positif	Speculative Buy	2,070	2,030	2,000	2,100	2,140	1,970
MDKA	Positif	Trading	Negatif	Hold	4,345	4,300	4,255	4,390	4,435	4,190
MEDC	Negatif	Trading	Positif	Hold	1,140	1,120	1,105	1,155	1,175	1,085
MIKA	Positif	OverBought	Positif	Hold	3,095	3,070	3,015	3,150	3,175	2,970
MNCN	Positif	Oversold	Negatif	Speculative Buy	750	740	735	755	765	720
PGAS	Positif	Trading	Negatif	Hold	1,820	1,805	1,795	1,830	1,845	1,770
PTBA	Negatif	Trading	Positif	Hold	3,785	3,740	3,715	3,810	3,855	3,660
SMGR	Negatif	Oversold	Negatif	Speculative Buy	7,075	6,925	6,725	7,275	7,425	6,625
TBIG	Negatif	Trading	Positif	Hold	2,310	2,275	2,240	2,345	2,380	2,205
TINS	Positif	Oversold	Negatif	Speculative Buy	1,190	1,170	1,155	1,205	1,225	1,140
TLKM	Positif	Oversold	Negatif	Speculative Buy	3,685	3,650	3,635	3,700	3,735	3,580
TOWR	Positif	Trading	Negatif	Hold	1,105	1,085	1,070	1,120	1,140	1,055
TPIA	Negatif	OverBought	Positif	Sell	2,460	2,440	2,410	2,490	2,510	2,375
UNTR	Positif	Oversold	Negatif	Speculative Buy	26,650	26,525	26,375	26,800	26,925	25,975
UNVR	Negatif	Trading	Positif	Hold	4,695	4,670	4,615	4,750	4,775	4,545
WIKA	Positif	Oversold	Negatif	Speculative Buy	810	795	780	825	840	770

## OUR TEAM

**Sukarno Alatas**

Head of Equity Research

[sukarno@kiwoom.co.id](mailto:sukarno@kiwoom.co.id) | 021 5010 5800**Michelle Abadi**

Associate

[michelle@kiwoom.co.id](mailto:michelle@kiwoom.co.id) | 021 5010 5800**Abdul Azis Setyo Wibowo**

Equity Research Analyst

[azis@kiwoom.co.id](mailto:azis@kiwoom.co.id) | 021 5010 5800**Rizky Khaerunnisa**

Equity Research Analyst

[rizky@kiwoom.co.id](mailto:rizky@kiwoom.co.id) | 021 5010 5800**OTHER DISCLOSURES**

All Kiwoom's research reports made available to clients are simultaneously available on our own website <http://www.kiwoom.co.id/>. Not all research content is redistributed, e-mailed or made available to third-party aggregators. For all research reports available on a particular stock, please contact your sales representative. Any data discrepancies in this report could be the result of different calculations and/or adjustments.

**DISCLAIMER** This report has been prepared and issued by PT Kiwoom Sekuritas Indonesia. Information has been obtained from sources believed to be reliable but Kiwoom Securities do not warrant its completeness or accuracy. Forward-looking information or statements in this report contain information that is based on forecast of future results, estimates of amounts not yet determinable, assumptions, and therefore involve known and unknown risks and uncertainties which may cause the actual results, performance or achievements of their subject matter to be materially different from current expectations.

To the fullest extent allowed by law, PT Kiwoom Sekuritas Indonesia shall not be liable for any direct, indirect or consequential losses, loss of profits, damages, costs or expenses incurred or suffered by any person or organization arising from reliance on or use of any information contained on this report. The information that we provide should not be construed in any manner whatsoever as, personalized advice.

No mention of a particular security in this report constitutes a recommendation to buy, sell or hold that or any security, or that any particular security, portfolio of securities, transaction or investment strategy is suitable for any specific person. This report is being supplied to you solely for your information and may not be reproduced by, further distributed to or published in whole or in part by, any other person.