

JCI Range Today : 6,747 – 6,774 (Support), 6,854 – 6,892 (Resistance)



JCI managed to close higher with a bullish candle. Stochastic indicator is bullish, MACD histogram is moving in the positive direction (sloping line) and volume slightly increased. If JCI is able to move bullish, there is a chance for JCI to strengthen again to the resistance at the range of 6,854 – 6,892. If it is bearish again, JCI is expected to move again to the support at the range of 6,747 – 6,774.

ANTM



(ANTM) The price closed higher with a bullish candle. The price has the opportunity to strengthen again to the nearest resistance. Stochastic golden cross indicator, MACD histogram is moving in the positive direction (bearish line) and volume is increasing. Confirmation to buy if the next candle is bullish again or buy on support if it goes down first. We suggest being careful if it fails to stay above the support level. **(Trading Buy)**

TRADING STRATEGY:

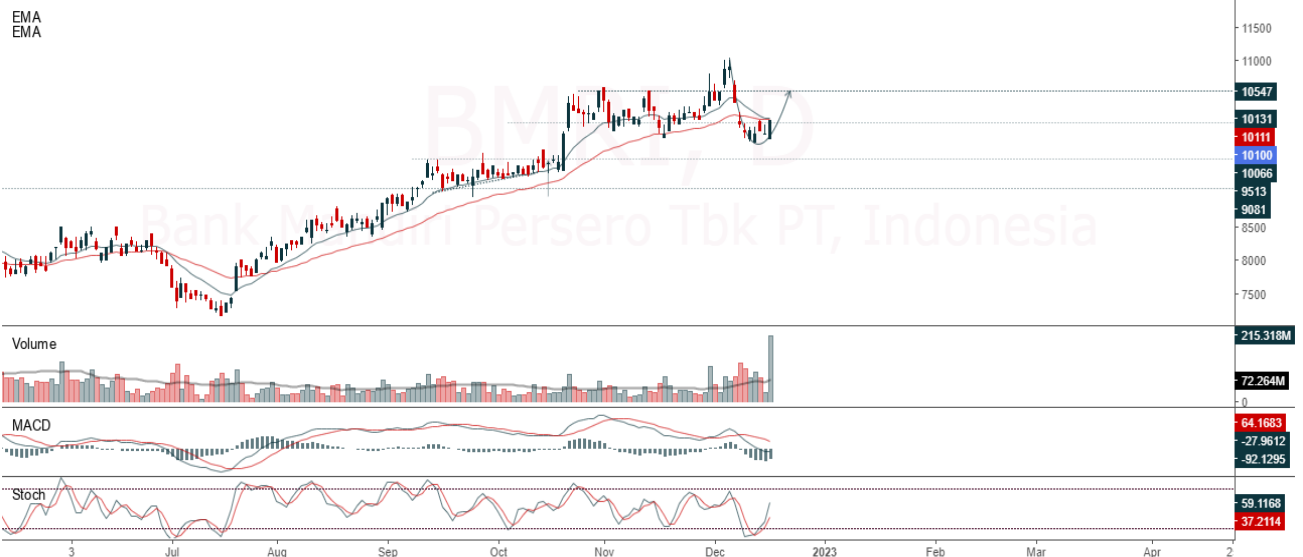
1. Target Price: The price has a bullish opportunity to test the resistance level 2,070. If it breaks level 2,070 then the price will go to level 2,090. We recommend to be careful if the price fails to break through or turn around the support area.

2. Stop Loss: To minimize the risk of loss, we recommend placing a stop loss at level 1,955.

Entry Buy : 1,975 – 2,020
 Target Price : 2,070 – 2,090
 Support : 1,960 – 1,975
 Cutloss : 1,955

BMRI

Bank Mandiri Persero Tbk PT, Indonesia, Jakarta:BMRI, D



(BMRI) The price closed higher with a bullish candle. The price has the opportunity to strengthen again to the nearest resistance. Stochastic indicator is bullish, MACD histogram is moving in the positive direction (bearish line) and volume has increased significantly. Confirmation to buy if the next candle is bullish again or buy on support if it goes down first. We suggest being careful if it fails to stay above the support level. **(Trading Buy)**

TRADING STRATEGY:

1. Target Price: The price has a bullish opportunity to test the resistance level 10,300. If it breaks level 10,300 then the price will go to level 10,375. We recommend to be careful if the price fails to break through or turn around the support area.

2. Stop Loss: To minimize the risk of loss, we recommend placing a stop loss at level 9,825.

Entry Buy	: 9,975 – 10,100
Target Price	: 10,300 – 10,375
Support	: 9,850 – 9,975
Cutloss	: 9,825

CPIN

Charoen Pokphand Indonesia Tbk PT, Indonesia, Jakarta:CPIN, D



(CPIN) The price closed higher and is testing resistance. The price has the opportunity to strengthen again for the nearest resistance test. Stochastic indicator is bullish, MACD histogram is moving positive (bullish line) and volume is increasing. Confirmation to buy if the next candle is bullish again (Buy on break at level of 6,050) or buy on support if it goes down first. We suggest being careful if it fails to stay above the support level. **(Buy on Break or Trading Buy)**

TRADING STRATEGY:

1. Target Price: The price has a bullish opportunity to test the resistance level 6,125. If it breaks level 6,125 then the price will go to level 6,175. We recommend to be careful if the price fails to break through or turn around the support area.

2. Stop Loss: To minimize the risk of loss, we recommend placing a stop loss at level 5,850.

Entry Buy	: 5,925 – 6,000
Target Price	: 6,125 – 6,175
Support	: 5,875 – 5,925
Cutloss	: 5,850

UNVR

Unilever Indonesia Tbk, Indonesia, Jakarta:UNVR, D

EMA (13, close, 0)
EMA (34, close, 0)



(UNVR) The price closed higher with a bullish candle. The price has the opportunity to strengthen again to the nearest resistance. Stochastic indicator is bullish, MACD histogram is moving positive (bullish line) and volume is increasing. Confirmation to buy if the next candle is bullish again or buy on support if it goes down first. We suggest being careful if it fails to stay above the support level. **(Trading Buy)**

TRADING STRATEGY:

1. Target Price: The price has a bullish opportunity to test the resistance level 4,980. If it breaks level 4,980 then the price will go to level 5,025. We recommend to be careful if the price fails to break through or turn around the support area.
2. Stop Loss: To minimize the risk of loss, we recommend placing a stop loss at level 4,650.

Entry Buy : 4,800 – 4,870
Target Price : 4,980 – 5,025
Support : 4,670 – 4,800
Cutloss : 4,650

Forecast – Technical Analysis

Ticker	MA5	RSI Rec	MACD Trend	Recomm.	Pivot Point	Support		Resistance		Stop Loss Level
						1	2	1	2	
JCI	Negatif	Trading	Negatif	Sell	6,750	6,700	6,650	6,825	6,875	6,550
ADRO	Negatif	Trading	Positif	Hold	3,885	3,845	3,815	3,915	3,955	3,755
AMRT	Negatif	Trading	Negatif	Sell	2,565	2,535	2,515	2,585	2,615	2,475
ANTM	Negatif	Trading	Negatif	Sell	1,970	1,910	1,855	2,025	2,085	1,825
ARTO	Negatif	Trading	Positif	Hold	3,995	3,930	3,815	4,110	4,175	3,760
ASII	Negatif	Oversold	Negatif	Speculative Buy	5,775	5,725	5,675	5,825	5,875	5,575
BBCA	Negatif	Trading	Negatif	Sell	8,525	8,400	8,275	8,650	8,775	8,150
BBNI	Negatif	OverBought	Negatif	Strong Sell	9,600	9,375	9,150	9,825	10,050	9,000
BBRI	Negatif	OverBought	Positif	Sell	4,900	4,820	4,740	4,980	5,050	4,670
BBTN	Negatif	Oversold	Negatif	Speculative Buy	1,370	1,360	1,345	1,385	1,395	1,325
BFIN	Positif	Trading	Negatif	Hold	1,060	1,045	1,030	1,075	1,090	1,010
BMRI	Negatif	Trading	Negatif	Sell	9,975	9,825	9,700	10,100	10,250	9,550
BRIS	Negatif	Oversold	Negatif	Speculative Buy	1,205	1,195	1,185	1,215	1,225	1,170
BRPT	Positif	Trading	Negatif	Hold	770	755	745	780	795	730
BUKA	Negatif	Trading	Negatif	Sell	273	267	263	277	283	259
CPIN	Negatif	OverBought	Positif	Sell	5,875	5,775	5,625	6,025	6,125	5,550
EMTK	Positif	Oversold	Negatif	Speculative Buy	1,055	1,020	995	1,080	1,115	980
ERAA	Negatif	Trading	Positif	Hold	397	395	393	399	401	387
EXCL	Positif	Oversold	Negatif	Speculative Buy	2,030	1,995	1,980	2,045	2,080	1,950
GOTO	Negatif	Oversold	Negatif	Speculative Buy	95	93	90	98	100	89
HMSP	Positif	Trading	Negatif	Hold	930	920	910	940	950	895
HRUM	Negatif	Trading	Negatif	Sell	1,735	1,725	1,695	1,765	1,775	1,670
ICBP	Negatif	OverBought	Negatif	Strong Sell	10,350	10,275	10,150	10,475	10,550	10,000
INCO	Negatif	Trading	Negatif	Sell	7,300	7,175	7,075	7,400	7,525	6,950
INDF	Negatif	OverBought	Positif	Sell	6,950	6,900	6,850	7,000	7,050	6,750
INDY	Negatif	Trading	Positif	Hold	2,890	2,860	2,840	2,910	2,940	2,795
INKP	Negatif	Trading	Negatif	Sell	9,650	9,525	9,250	9,925	10,050	9,125
INTP	Negatif	Trading	Negatif	Sell	9,875	9,800	9,700	9,975	10,050	9,550
ITMG	Negatif	Trading	Negatif	Sell	40,250	39,900	39,450	40,700	41,050	38,850
JPFA	Negatif	Oversold	Positif	Speculative Buy	1,270	1,245	1,230	1,285	1,310	1,210
KLBF	Positif	Trading	Negatif	Hold	2,075	2,025	1,975	2,125	2,175	1,945
MDKA	Positif	Trading	Negatif	Hold	4,295	4,225	4,185	4,335	4,405	4,120
MEDC	Negatif	Trading	Positif	Hold	1,115	1,100	1,085	1,130	1,145	1,070
MIKA	Negatif	OverBought	Positif	Sell	3,115	3,075	3,045	3,145	3,185	2,995
MNCN	Negatif	Oversold	Negatif	Speculative Buy	740	730	725	745	755	710
PGAS	Negatif	Trading	Negatif	Sell	1,815	1,805	1,785	1,835	1,845	1,760
PTBA	Negatif	Trading	Positif	Hold	3,770	3,735	3,690	3,815	3,850	3,630
SMGR	Negatif	Oversold	Negatif	Speculative Buy	7,050	6,925	6,675	7,300	7,425	6,575
TBIG	Positif	Trading	Positif	Speculative Buy	2,300	2,235	2,200	2,335	2,400	2,165
TINS	Negatif	Oversold	Negatif	Speculative Buy	1,190	1,175	1,160	1,205	1,220	1,140
TLKM	Negatif	Oversold	Negatif	Speculative Buy	3,660	3,580	3,530	3,710	3,790	3,475
TOWR	Positif	Oversold	Negatif	Speculative Buy	1,090	1,070	1,060	1,100	1,120	1,045
TPIA	Negatif	OverBought	Positif	Sell	2,470	2,435	2,390	2,515	2,550	2,350
UNTR	Negatif	Oversold	Negatif	Speculative Buy	26,525	26,250	26,000	26,775	27,050	25,600
UNVR	Negatif	OverBought	Positif	Sell	4,775	4,675	4,565	4,885	4,985	4,495
WIKA	Positif	Oversold	Negatif	Speculative Buy	815	810	800	825	830	785

OUR TEAM

Sukarno Alatas

Head of Equity Research

sukarno@kiwoom.co.id | 021 5010 5800**Michelle Abadi**

Associate

michelle@kiwoom.co.id | 021 5010 5800**Abdul Azis Setyo Wibowo**

Equity Research Analyst

azis@kiwoom.co.id | 021 5010 5800**Rizky Khaerunnisa**

Equity Research Analyst

rizky@kiwoom.co.id | 021 5010 5800**OTHER DISCLOSURES**

All Kiwoom's research reports made available to clients are simultaneously available on our own website <http://www.kiwoom.co.id/>. Not all research content is redistributed, e-mailed or made available to third-party aggregators. For all research reports available on a particular stock, please contact your sales representative. Any data discrepancies in this report could be the result of different calculations and/or adjustments.

DISCLAIMER This report has been prepared and issued by PT Kiwoom Sekuritas Indonesia. Information has been obtained from sources believed to be reliable but Kiwoom Securities do not warrant its completeness or accuracy. Forward-looking information or statements in this report contain information that is based on forecast of future results, estimates of amounts not yet determinable, assumptions, and therefore involve known and unknown risks and uncertainties which may cause the actual results, performance or achievements of their subject matter to be materially different from current expectations.

To the fullest extent allowed by law, PT Kiwoom Sekuritas Indonesia shall not be liable for any direct, indirect or consequential losses, loss of profits, damages, costs or expenses incurred or suffered by any person or organization arising from reliance on or use of any information contained on this report. The information that we provide should not be construed in any manner whatsoever as, personalized advice.

No mention of a particular security in this report constitutes a recommendation to buy, sell or hold that or any security, or that any particular security, portfolio of securities, transaction or investment strategy is suitable for any specific person. This report is being supplied to you solely for your information and may not be reproduced by, further distributed to or published in whole or in part by, any other person.