

**JCI Range Today : 6,714 – 6,740 (Support), 6,827 – 6,854 (Resistance)**

Jakarta Stock Exchange Composite Index, Indonesia, Jakarta:JKSE, D

EMA (34, close, 0)  
EMA (13, close, 0)

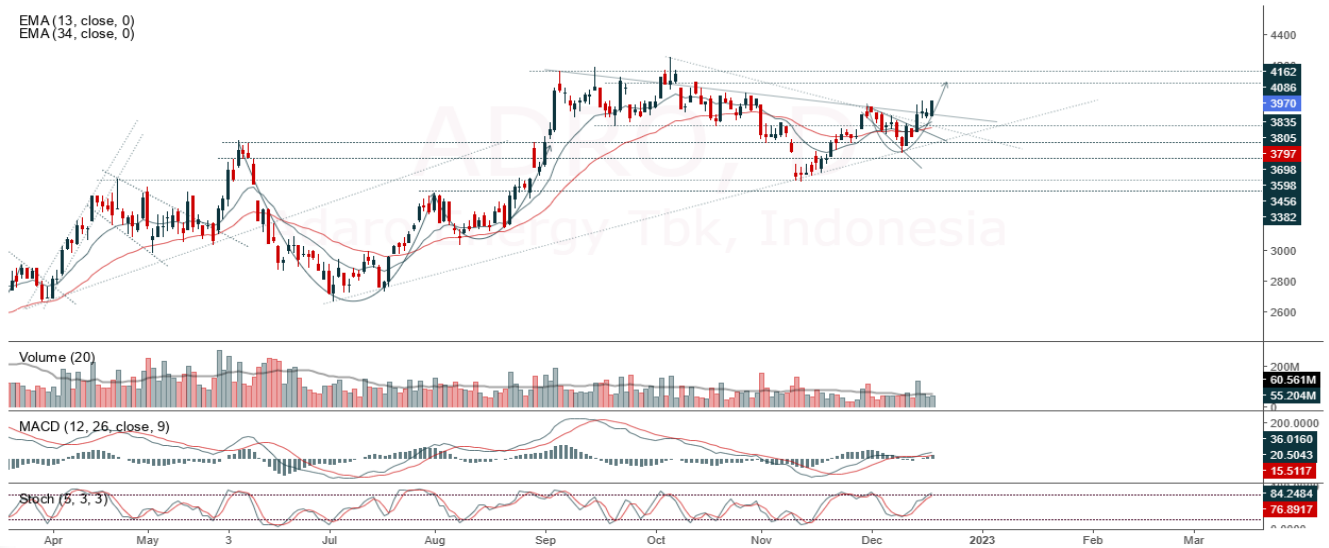


JCI closed lower with a bearish candle. Stochastic indicator is neutral, MACD histogram is moving in the positive direction (sloping line) and volume is decreasing. If JCI is able to move bullish, there is a chance for JCI to strengthen to the resistance at the range of 6,827 – 6,854. If it is bearish again, JCI is expected to return to the support at the range of 6,714 – 6,740.

**ADRO**

Adaro Energy Tbk, Indonesia, Jakarta:ADRO, D

EMA (13, close, 0)  
EMA (34, close, 0)



**(ADRO)** The price closed higher with a bullish candle. The price has the opportunity to strengthen again to the nearest resistance. Stochastic indicator is bullish, MACD histogram is moving positive (bullish line) and volume is increasing. Confirmation to buy if the next candle is bullish again or buy on support if it goes down first. We suggest being careful if it fails to stay above the support level. **(Trading Buy)**

**TRADING STRATEGY:**

1. Target Price: The price has a bullish opportunity to test the resistance level 4,050. If it breaks level 4,050 then the price will go to level 4,090. We recommend to be careful if the price fails to break through or turn around the support area.

2. Stop Loss: To minimize the risk of loss, we recommend placing a stop loss at level 3,860.

Entry Buy : 3,920 – 3,970  
Target Price : 4,050 – 4,090  
Support : 3,870 – 3,920  
Cutloss : 3,860

**EXCL**



**(EXCL)** The price closed higher with a bullish candle. The price has the opportunity to strengthen again to the nearest resistance. Stochastic golden cross indicator, MACD histogram is moving in the positive direction (bearish line) and neutral volume. Confirmation to buy if the next candle is bullish again or buy on support if it goes down first. We suggest being careful if it fails to stay above the support level. **(Trading Buy)**

**TRADING STRATEGY:**

1. Target Price: The price has a bullish opportunity to test the resistance level 2,100. If it breaks level 2,100 then the price will go to level 2,120. We recommend to be careful if the price fails to break through or turn around the support area.

2. Stop Loss: To minimize the risk of loss, we recommend placing a stop loss at level 2,000.

Entry Buy : 2,020 – 2,050  
Target Price : 2,100 – 2,120  
Support : 2,010 – 2,020  
Cutloss : 2,000

**MPMX**

Mitra Pinasthika Mustika, Indonesia, Jakarta:MPMX, D



**(MPMX)** The price closed higher and re-tested the nearest resistance. The price has the opportunity to strengthen again for the nearest resistance test. The stochastic indicator is bullish, MACD histogram is moving in the positive direction (bullish line) and volume is increasing slightly. Confirmation to buy if the next candle is bullish again or buy on support if it goes down first. We suggest being careful if it fails to stay above the support level. **(Trading Buy)**

**TRADING STRATEGY:**

1. Target Price: The price has a bullish opportunity to test the resistance level 1,190. If it breaks level 1,190 then the price will go to level 1,200. We recommend to be careful if the price fails to break through or turn around the support area.

2. Stop Loss: To minimize the risk of loss, we recommend placing a stop loss at level 1,130.

Entry Buy : 1,145 – 1,165  
 Target Price : 1,190 – 1,200  
 Support : 1,135 – 1,145  
 Cutloss : 1,130



**Forecast – Technical Analysis**

Ticker	MA5	RSI Rec	MACD Trend	Recomm.	Pivot Point	Support		Resistance		Stop Loss Level
						1	2	1	2	
JCI	Negatif	Trading	Negatif	Sell	6,800	6,750	6,725	6,825	6,875	6,625
ADRO	Negatif	Trading	Positif	Hold	3,920	3,870	3,820	3,970	4,020	3,765
AMRT	Negatif	Trading	Negatif	Sell	2,565	2,505	2,475	2,595	2,655	2,435
ANTM	Negatif	Trading	Negatif	Sell	2,035	2,005	1,975	2,065	2,095	1,945
ARTO	Negatif	Trading	Positif	Hold	3,935	3,800	3,655	4,080	4,215	3,600
ASII	Negatif	Oversold	Negatif	Speculative Buy	5,775	5,675	5,575	5,875	5,975	5,475
BBCA	Positif	Trading	Negatif	Hold	8,650	8,600	8,550	8,700	8,750	8,425
BBNI	Negatif	OverBought	Negatif	Strong Sell	9,575	9,400	9,250	9,725	9,900	9,100
BBRI	Negatif	OverBought	Positif	Sell	4,960	4,940	4,900	5,000	5,025	4,825
BBTN	Positif	Oversold	Negatif	Speculative Buy	1,370	1,355	1,350	1,375	1,390	1,325
BFIN	Positif	Trading	Negatif	Hold	1,060	1,055	1,045	1,070	1,075	1,030
BMRI	Negatif	Trading	Negatif	Sell	10,000	9,925	9,825	10,100	10,175	9,675
BRIS	Positif	Oversold	Negatif	Speculative Buy	1,160	1,120	1,080	1,200	1,240	1,065
BRPT	Positif	Trading	Negatif	Hold	770	750	740	780	800	725
BUKA	Negatif	Trading	Negatif	Sell	267	261	257	271	277	253
CPIN	Negatif	OverBought	Positif	Sell	6,000	5,975	5,925	6,050	6,075	5,825
EMTK	Negatif	Oversold	Negatif	Speculative Buy	1,045	1,000	965	1,080	1,125	950
ERAA	Positif	Trading	Positif	Speculative Buy	398	393	390	401	406	384
EXCL	Positif	Oversold	Negatif	Speculative Buy	2,040	2,010	1,990	2,060	2,090	1,960
GOTO	Negatif	Oversold	Negatif	Speculative Buy	93	92	89	96	97	88
HMSP	Positif	Trading	Negatif	Hold	925	915	900	940	950	885
HRUM	Positif	Trading	Negatif	Hold	1,735	1,715	1,690	1,760	1,780	1,665
ICBP	Positif	OverBought	Negatif	Sell	10,275	10,150	10,025	10,400	10,525	9,875
INCO	Positif	Trading	Negatif	Hold	7,350	7,300	7,250	7,400	7,450	7,125
INDF	Positif	OverBought	Positif	Hold	6,950	6,900	6,800	7,050	7,100	6,700
INDY	Positif	Trading	Positif	Speculative Buy	2,910	2,890	2,880	2,920	2,940	2,835
INKP	Positif	Trading	Negatif	Hold	9,600	9,475	9,375	9,700	9,825	9,225
INTP	Positif	Trading	Negatif	Hold	9,900	9,825	9,725	10,000	10,075	9,575
ITMG	Negatif	Trading	Negatif	Sell	40,575	40,425	40,100	40,900	41,050	39,500
JPFA	Positif	Oversold	Positif	Buy	1,270	1,260	1,245	1,285	1,295	1,230
KLBF	Positif	Trading	Negatif	Hold	2,125	2,080	2,015	2,190	2,235	1,985
MDKA	Negatif	Trading	Negatif	Sell	4,275	4,215	4,165	4,325	4,385	4,100
MEDC	Positif	Trading	Positif	Speculative Buy	1,105	1,095	1,075	1,125	1,135	1,060
MIKA	Negatif	OverBought	Positif	Sell	3,065	3,015	2,935	3,145	3,195	2,890
MNCN	Positif	Oversold	Negatif	Speculative Buy	740	735	730	745	750	720
PGAS	Positif	Trading	Negatif	Hold	1,830	1,815	1,810	1,835	1,850	1,780
PTBA	Positif	Trading	Positif	Speculative Buy	3,805	3,790	3,765	3,830	3,845	3,710
SMGR	Negatif	Oversold	Negatif	Speculative Buy	6,950	6,825	6,675	7,100	7,225	6,575
TBIG	Positif	Trading	Positif	Speculative Buy	2,315	2,290	2,265	2,340	2,365	2,230
TINS	Negatif	Oversold	Negatif	Speculative Buy	1,195	1,180	1,175	1,200	1,215	1,155
TLKM	Negatif	Oversold	Negatif	Speculative Buy	3,735	3,675	3,625	3,785	3,845	3,570
TOWR	Negatif	Oversold	Negatif	Speculative Buy	1,085	1,075	1,065	1,095	1,105	1,050
TPIA	Negatif	OverBought	Positif	Sell	2,455	2,430	2,405	2,480	2,505	2,370
UNTR	Positif	Oversold	Negatif	Speculative Buy	26,575	26,300	26,025	26,850	27,125	25,625
UNVR	Negatif	OverBought	Positif	Sell	4,780	4,730	4,680	4,830	4,880	4,610
WIKA	Positif	Oversold	Negatif	Speculative Buy	805	800	795	810	815	785

## OUR TEAM

**Sukarno Alatas**

Head of Equity Research

[sukarno@kiwoom.co.id](mailto:sukarno@kiwoom.co.id) | 021 5010 5800**Michelle Abadi**

Associate

[michelle@kiwoom.co.id](mailto:michelle@kiwoom.co.id) | 021 5010 5800**Abdul Azis Setyo Wibowo**

Equity Research Analyst

[azis@kiwoom.co.id](mailto:azis@kiwoom.co.id) | 021 5010 5800**Rizky Khaerunnisa**

Equity Research Analyst

[rizky@kiwoom.co.id](mailto:rizky@kiwoom.co.id) | 021 5010 5800**OTHER DISCLOSURES**

All Kiwoom's research reports made available to clients are simultaneously available on our own website <http://www.kiwoom.co.id/>. Not all research content is redistributed, e-mailed or made available to third-party aggregators. For all research reports available on a particular stock, please contact your sales representative. Any data discrepancies in this report could be the result of different calculations and/or adjustments.

**DISCLAIMER** This report has been prepared and issued by PT Kiwoom Sekuritas Indonesia. Information has been obtained from sources believed to be reliable but Kiwoom Securities do not warrant its completeness or accuracy. Forward-looking information or statements in this report contain information that is based on forecast of future results, estimates of amounts not yet determinable, assumptions, and therefore involve known and unknown risks and uncertainties which may cause the actual results, performance or achievements of their subject matter to be materially different from current expectations.

To the fullest extent allowed by law, PT Kiwoom Sekuritas Indonesia shall not be liable for any direct, indirect or consequential losses, loss of profits, damages, costs or expenses incurred or suffered by any person or organization arising from reliance on or use of any information contained on this report. The information that we provide should not be construed in any manner whatsoever as, personalized advice.

No mention of a particular security in this report constitutes a recommendation to buy, sell or hold that or any security, or that any particular security, portfolio of securities, transaction or investment strategy is suitable for any specific person. This report is being supplied to you solely for your information and may not be reproduced by, further distributed to or published in whole or in part by, any other person.