

**JCI Range Today : 6,763 – 6,792 (Support), 6,854 – 6,892 (Resistance)**

Jakarta Stock Exchange Composite Index, Indonesia, Jakarta:JKSE, D

EMA (34, close, 0)  
EMA (13, close, 0)



JCI closed slightly higher with a bullish candle. Stochastic indicator is bullish, MACD histogram is moving in the positive direction (golden cross potential line) and volume is falling again. If JCI is able to move bullish, there is a chance for JCI to strengthen again to the resistance at the range of 6,854 – 6,892. If it is bearish again, JCI is expected to move again to the support at the range of 6,763 – 6,792.

## AKRA

Akr Corporindo Tbk, Indonesia, Jakarta:AKRA, D

EMA (13, close, 0)  
EMA (34, close, 0)



**(AKRA).** The price closed higher with a bullish candle. The price has the opportunity to strengthen again to the nearest resistance. Stochastic golden cross indicator, MACD histogram is moving in the positive direction (golden cross potential line) and volume is increasing. Confirmation to buy if the next candle is bullish again or buy on support if it goes down first. We suggest being careful if it fails to stay above the support level. **(Trading Buy)**

### TRADING STRATEGY:

1. Target Price: The price has a bullish opportunity to test the resistance level 1,430. If it breaks level 1,430 then the price will go to level 1,445. We recommend to be careful if the price fails to break through or turn around the support area.

2. Stop Loss: To minimize the risk of loss, we recommend placing a stop loss at level 1,360.

Entry Buy : 1,375 – 1,400  
Target Price : 1,430 – 1,445  
Support : 1,365 – 1,375  
Cutloss : 1,360

**ASSA**



**(ASSA).** The price closed higher and formed a swing low. The price has the opportunity to strengthen again to the nearest resistance. Stochastic golden cross indicator, MACD histogram is moving positive (bullish line) and volume is increasing. Confirmation to buy if the next candle is bullish again or buy on support if it goes down first. We suggest being careful if it fails to stay above the support level. **(Trading buy)**

**TRADING STRATEGY:**

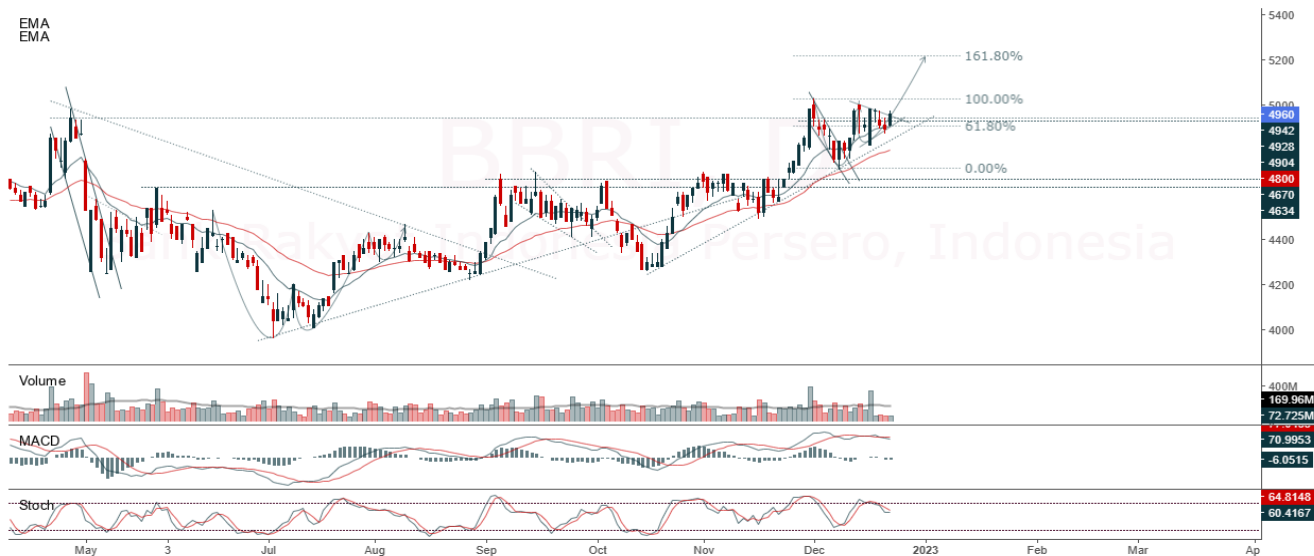
1.Target Price: The price has a bullish opportunity to test the resistance level 825. If it breaks level 825 then the price will go to level 765. We recommend to be careful if the price fails to break through or turn around the support area.

2. Stop Loss: To minimize the risk of loss, we recommend placing a stop loss at level 765.

Entry Buy : 785 – 805  
Target Price : 825 – 845  
Support : 770 – 785  
Cutloss : 765

**BBRI**

Bank Rakyat Indonesia Persero, Indonesia, Jakarta:BBRI, D



**(BBRI).** The price closed higher with a bullish candle. The price has the opportunity to strengthen again to the nearest resistance. The stochastic golden cross indicator, MACD histogram is moving in the positive direction (bullish line) and volume is increasing slightly. Confirmation to buy if the next candle is bullish again or buy on support if it goes down first. We suggest being careful if it fails to stay above the support level.. **(Trading Buy)**

**TRADING STRATEGY:**

1.Target Price: The price has a bullish opportunity to test the resistance level 5,025. If it breaks level 5,025 then the price will go to level 5,100. We recommend to be careful if the price fails to break through or turn around the support area.

2. Stop Loss: To minimize the risk of loss, we recommend placing a stop loss at level 4,860.

- Entry Buy : 4,900 – 4,960
- Target Price : 5,025 – 5,100
- Support : 4,870 – 4,900
- Cutloss : 4,860

**EXCL**

XL Axiata Tbk PT, Indonesia, Jakarta:EXCL, D



*(EXCL The price closed higher with a bullish candle. The price has the opportunity to strengthen again to the nearest resistance. Stochastic indicator is bullish, MACD histogram is moving positive (golden cross line) and volume has increased significantly. Confirmation to buy if the next candle is bullish again or buy on support if it goes down first. We suggest being careful if it fails to stay above the support level. (Trading Buy)*

**TRADING STRATEGY:**

1. Target Price: The price has a bullish opportunity to test the resistance level 3,870. If it breaks level 3,870 then the price will go to level 3,890. We recommend to be careful if the price fails to break through or turn around the support area.

2. Stop Loss: To minimize the risk of loss, we recommend placing a stop loss at level 3,670.

Entry Buy : 2,060 – 2,100  
 Target Price : 2,160 – 2,180  
 Support : 2,050 – 2,060  
 Cutloss : 2,040

**Forecast – Technical Analysis**

Ticker	MA5	RSI Rec	MACD Trend	Recomm.	Pivot Point	Support		Resistance		Stop Loss Level
						1	2	1	2	
JCI	Negatif	Trading	Negatif	Sell	6,825	6,800	6,775	6,850	6,875	6,675
ADRO	Negatif	Trading	Positif	Hold	3,920	3,900	3,880	3,940	3,960	3,820
AMRT	Negatif	Trading	Negatif	Sell	2,595	2,585	2,565	2,615	2,625	2,525
ANTM	Negatif	Trading	Positif	Hold	2,050	2,020	1,990	2,080	2,110	1,960
ARTO	Positif	Oversold	Positif	Buy	3,705	3,640	3,545	3,800	3,865	3,490
ASII	Positif	Oversold	Positif	Buy	5,725	5,700	5,625	5,800	5,825	5,550
BBCA	Negatif	Trading	Negatif	Sell	8,625	8,575	8,525	8,675	8,725	8,400
BBNI	Negatif	Trading	Negatif	Sell	9,400	9,375	9,300	9,475	9,500	9,175
BBRI	Negatif	Trading	Negatif	Sell	4,935	4,900	4,865	4,970	5,000	4,790
BBTN	Positif	Oversold	Negatif	Speculative Buy	1,405	1,395	1,385	1,415	1,425	1,365
BFIN	Positif	Oversold	Negatif	Speculative Buy	1,020	1,005	995	1,030	1,045	980
BMRI	Negatif	Trading	Negatif	Sell	10,025	9,950	9,875	10,100	10,175	9,725
BRIS	Positif	Oversold	Negatif	Speculative Buy	1,190	1,140	1,095	1,235	1,285	1,080
BRPT	Negatif	Trading	Negatif	Sell	770	755	750	775	790	735
BUKA	Positif	Trading	Negatif	Hold	263	258	253	268	273	249
CPIN	Negatif	Trading	Positif	Hold	5,925	5,875	5,800	6,000	6,050	5,725
EMTK	Positif	Oversold	Negatif	Speculative Buy	1,025	1,005	980	1,050	1,070	965
ERAA	Positif	Trading	Negatif	Hold	390	385	380	395	400	374
EXCL	Negatif	Oversold	Negatif	Speculative Buy	2,095	2,070	2,045	2,120	2,145	2,015
GOTO	Positif	Oversold	Negatif	Speculative Buy	89	88	86	91	92	85
HMSP	Positif	Trading	Negatif	Hold	940	935	925	950	955	910
HRUM	Positif	Trading	Negatif	Hold	1,685	1,675	1,660	1,700	1,710	1,635
ICBP	Positif	Trading	Negatif	Hold	10,175	10,025	9,850	10,350	10,500	9,700
INCO	Positif	Trading	Negatif	Hold	7,300	7,225	7,175	7,350	7,425	7,050
INDF	Positif	OverBought	Positif	Hold	6,850	6,800	6,725	6,925	6,975	6,625
INDY	Positif	Trading	Positif	Speculative Buy	2,920	2,860	2,820	2,960	3,020	2,780
INKP	Positif	Trading	Negatif	Hold	9,300	9,150	9,000	9,450	9,600	8,850
INTP	Positif	Trading	Negatif	Hold	9,750	9,650	9,525	9,875	9,975	9,375
ITMG	Negatif	Trading	Positif	Hold	41,100	40,800	40,525	41,375	41,675	39,925
JPFA	Negatif	Trading	Positif	Hold	1,310	1,295	1,285	1,320	1,335	1,265
KLBF	Negatif	Trading	Negatif	Sell	2,065	2,040	2,015	2,090	2,115	1,985
MDKA	Positif	Trading	Negatif	Hold	4,080	4,040	4,000	4,120	4,160	3,940
MEDC	Positif	Trading	Negatif	Hold	1,110	1,095	1,075	1,130	1,145	1,060
MIKA	Positif	Trading	Positif	Speculative Buy	3,095	3,055	3,025	3,125	3,165	2,975
MNCN	Positif	Oversold	Negatif	Speculative Buy	725	725	715	735	735	705
PGAS	Negatif	Trading	Negatif	Sell	1,825	1,815	1,805	1,835	1,845	1,780
PTBA	Negatif	Trading	Positif	Hold	3,765	3,730	3,705	3,790	3,825	3,650
SMGR	Positif	Oversold	Negatif	Speculative Buy	6,725	6,675	6,625	6,775	6,825	6,525
TBIG	Negatif	Trading	Positif	Hold	2,325	2,310	2,285	2,350	2,365	2,250
TINS	Positif	Oversold	Positif	Buy	1,170	1,160	1,155	1,175	1,185	1,135
TLKM	Negatif	Trading	Positif	Hold	3,775	3,740	3,705	3,810	3,845	3,650
TOWR	Positif	Oversold	Negatif	Speculative Buy	1,065	1,055	1,045	1,075	1,085	1,030
TPIA	Negatif	Trading	Positif	Hold	2,455	2,440	2,405	2,490	2,505	2,370
UNTR	Negatif	Oversold	Negatif	Speculative Buy	26,800	26,600	26,250	27,150	27,350	25,850
UNVR	Negatif	Trading	Positif	Hold	4,810	4,775	4,740	4,845	4,880	4,665
WIKA	Positif	Trading	Negatif	Hold	835	820	810	845	860	795

## OUR TEAM

**Sukarno Alatas**

Head of Equity Research

[sukarno@kiwoom.co.id](mailto:sukarno@kiwoom.co.id) | 021 5010 5800

**Michelle Abadi**

Associate

[michelle@kiwoom.co.id](mailto:michelle@kiwoom.co.id) | 021 5010 5800

**Abdul Azis Setyo Wibowo**

Equity Research Analyst

[azis@kiwoom.co.id](mailto:azis@kiwoom.co.id) | 021 5010 5800

**Rizky Khaerunnisa**

Equity Research Analyst

[rizky@kiwoom.co.id](mailto:rizky@kiwoom.co.id) | 021 5010 5800



### OTHER DISCLOSURES

All Kiwoom's research reports made available to clients are simultaneously available on our own website <http://www.kiwoom.co.id/>. Not all research content is redistributed, e-mailed or made available to third-party aggregators. For all research reports available on a particular stock, please contact your sales representative. Any data discrepancies in this report could be the result of different calculations and/or adjustments.

**DISCLAIMER** This report has been prepared and issued by PT Kiwoom Sekuritas Indonesia. Information has been obtained from sources believed to be reliable but Kiwoom Securities do not warrant its completeness or accuracy. Forward-looking information or statements in this report contain information that is based on forecast of future results, estimates of amounts not yet determinable, assumptions, and therefore involve known and unknown risks and uncertainties which may cause the actual results, performance or achievements of their subject matter to be materially different from current expectations.

To the fullest extent allowed by law, PT Kiwoom Sekuritas Indonesia shall not be liable for any direct, indirect or consequential losses, loss of profits, damages, costs or expenses incurred or suffered by any person or organization arising from reliance on or use of any information contained on this report. The information that we provide should not be construed in any manner whatsoever as, personalized advice.

No mention of a particular security in this report constitutes a recommendation to buy, sell or hold that or any security, or that any particular security, portfolio of securities, transaction or investment strategy is suitable for any specific person. This report is being supplied to you solely for your information and may not be reproduced by, further distributed to or published in whole or in part by, any other person.