

**JCI Range Today 6,858 – 6,892 (Support), 6,990 – 7,011 (Resistance)**



JCI closed higher with a bullish candle. Stochastic indicator is bullish, MACD histogram is moving positive (golden cross line) and volume is increasing. If JCI is able to move bullish, there is a chance for JCI to strengthen again to the resistance at the range of 6,990 – 7,011. If it is bearish again, JCI is expected to move again to the support at the range of 6,858 – 6,892.

**ASII**

Astra International Tbk, Indonesia, Jakarta:ASII, D



**(ASII)** The price closed lower and is in the support range. The price has the opportunity to strengthen again to the nearest resistance. Stochastic indicator is neutral, MACD histogram is moving positive (golden cross line) and volume is increasing slightly. Confirmation to buy if the next candle is bullish again or buy on support if it goes down first. We suggest to be careful if it fails to stay above the support level. **(Trading Buy)**

**TRADING STRATEGY:**

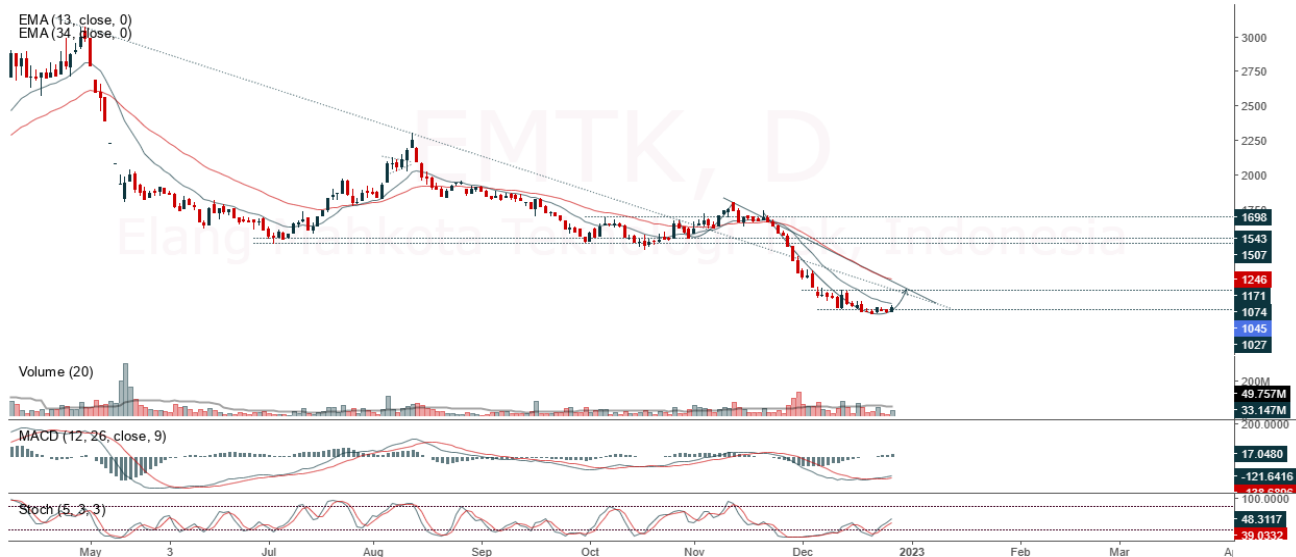
1. Target Price: The price has a bullish opportunity to test the resistance level 5,775. If it breaks level 5,775 then the price will go to level 5,850. We recommend to be careful if the price fails to break through or turn around the support area.

2. Stop Loss: To minimize the risk of loss, we recommend placing a stop loss at level 5,525.

Entry Buy : 5,625 – 5,675  
 Target Price : 5,775 – 5,850  
 Support : 5,550 – 5,625  
 Cutloss : 5,525

**EMTK**

Elang Mahkota Teknologi Tbk, Indonesia, Jakarta:EMTK, D



**(EMTK)** The price closed higher with a bullish candle. The price has the opportunity to strengthen again to the nearest resistance. Stochastic indicator is bullish, MACD histogram is moving positive (bullish line) and volume is increasing. Confirmation to buy if the next candle is bullish again or buy on support if it goes down first. We suggest to be careful if it fails to stay above the support level. **(Buy on weakness)**

**TRADING STRATEGY:**

1. Target Price: The price has a bullish opportunity to test the resistance level 1,070. If it breaks level 1,070 then the price will go to level 1,080. We recommend to be careful if the price fails to break through or turn around the support area.

2. Stop Loss: To minimize the risk of loss, we recommend placing a stop loss at level 1,005.

Entry Buy : 1,030 – 1,045  
 Target Price : 1,070 – 1,080  
 Support : 1,010 – 1,030  
 Cutloss : 1,005

**TLKM**

Telkom Indonesia (Persero) Tbk PT, Indonesia, Jakarta:TLKM, D



**(TLKM)** The price closed higher with a bullish candle. The price has the opportunity to strengthen again for the nearest resistance test. Stochastic indicator is bullish, MACD histogram is moving positive (bullish line) and volume is increasing. Confirmation to buy if the next candle is bullish again or buy on support if it goes down first. We suggest to be careful if it fails to stay above the support level. **(Trading Buy)**

**TRADING STRATEGY:**

1. Target Price: The price has a bullish opportunity to test the resistance level 3,890. If it breaks level 3,890 then the price will go to level 3,920. We recommend to be careful if the price fails to break through or turn around the support area.
2. Stop Loss: To minimize the risk of loss, we recommend placing a stop loss at level 3,720.

Entry Buy : 3,750 – 3,810  
Target Price : 3,890 – 3,920  
Support : 3,730 – 3,750  
Cutloss : 3,720

**UNVR**

Unilever Indonesia Tbk, Indonesia, Jakarta:UNVR, D

EMA (13, close, 0)  
EMA (34, close, 0)



**(UNVR)** The price closed higher with a bullish candle. The price has the opportunity to strengthen again to the nearest resistance. Stochastic indicator is bullish, MACD histogram is moving positive (bullish line) and volume is increasing slightly. Confirmation to buy if the next candle is bullish again or buy on support if it goes down first. We suggest to be careful if it fails to stay above the support level. **(Trading Buy)**

**TRADING STRATEGY:**

- 1.Target Price: The price has a bullish opportunity to test the resistance level 4,900. If it breaks level 4,900 then the price will go to level 4,950. We recommend to be careful if the price fails to break through or turn around the support area.
2. Stop Loss: To minimize the risk of loss, we recommend placing a stop loss at level 4,710.

Entry Buy : 4,740 – 4,810  
 Target Price : 4,900 – 4,950  
 Support : 4,720 – 4,740  
 Cutloss : 4,710

**Forecast – Technical Analysis**

Ticker	MAS	RSI Rec	MACD Trend	Recomm.	Pivot Point	Support		Resistance		Stop Loss Level
						1	2	1	2	
JCI	Negatif	Trading	Positif	Hold	6,875	6,850	6,800	6,925	6,975	6,700
ADRO	Positif	Trading	Negatif	Hold	3,775	3,735	3,695	3,815	3,855	3,635
AMRT	Negatif	OverBought	Positif	Sell	2,740	2,660	2,560	2,840	2,920	2,520
ANTM	Positif	Trading	Positif	Speculative Buy	2,005	1,975	1,950	2,030	2,060	1,920
ARTO	Positif	Oversold	Positif	Buy	3,565	3,470	3,415	3,620	3,715	3,365
ASII	Positif	Oversold	Positif	Buy	5,700	5,650	5,600	5,750	5,800	5,500
BBCA	Negatif	Trading	Negatif	Sell	8,600	8,575	8,525	8,650	8,675	8,400
BBNI	Positif	Trading	Negatif	Hold	9,350	9,275	9,200	9,425	9,500	9,050
BBRI	Positif	Trading	Negatif	Hold	4,905	4,855	4,815	4,945	4,995	4,740
BBTN	Negatif	Trading	Positif	Hold	1,400	1,370	1,350	1,420	1,450	1,330
BFIN	Positif	Trading	Negatif	Hold	1,035	1,025	1,020	1,040	1,050	1,000
BMRI	Positif	Trading	Negatif	Hold	9,975	9,925	9,800	10,100	10,150	9,650
BRIS	Negatif	Trading	Positif	Hold	1,305	1,245	1,195	1,355	1,415	1,175
BRPT	Negatif	Trading	Positif	Hold	780	775	765	790	795	755
BUKA	Negatif	Trading	Positif	Hold	267	264	261	270	273	257
CPIN	Positif	Trading	Positif	Speculative Buy	5,925	5,825	5,750	6,000	6,100	5,650
EMTK	Negatif	Oversold	Positif	Speculative Buy	1,035	1,005	985	1,055	1,085	970
ERAA	Negatif	Trading	Negatif	Sell	393	387	383	397	403	377
EXCL	Positif	Trading	Positif	Speculative Buy	2,120	2,040	1,990	2,170	2,250	1,960
GOTO	Negatif	Oversold	Positif	Speculative Buy	87	82	78	91	96	76
HMSP	Positif	Oversold	Negatif	Speculative Buy	900	895	880	915	920	870
HRUM	Positif	Oversold	Negatif	Speculative Buy	1,645	1,610	1,580	1,675	1,710	1,555
ICBP	Positif	Trading	Negatif	Hold	10,125	10,050	9,975	10,200	10,275	9,825
INCO	Positif	Trading	Negatif	Hold	7,150	7,075	7,025	7,200	7,275	6,925
INDF	Positif	Trading	Negatif	Hold	6,850	6,800	6,750	6,900	6,950	6,650
INDY	Positif	Trading	Negatif	Hold	2,820	2,770	2,740	2,850	2,900	2,700
INKP	Positif	Oversold	Negatif	Speculative Buy	9,075	8,950	8,875	9,150	9,275	8,725
INTP	Negatif	Trading	Negatif	Sell	9,950	9,800	9,650	10,100	10,250	9,500
ITMG	Positif	Trading	Positif	Speculative Buy	40,275	40,175	40,075	40,375	40,475	39,475
JPFA	Negatif	Trading	Positif	Hold	1,310	1,300	1,290	1,320	1,330	1,270
KLBF	Positif	Trading	Negatif	Hold	2,055	2,025	1,995	2,085	2,115	1,965
MDKA	Positif	Trading	Negatif	Hold	4,025	3,950	3,875	4,100	4,175	3,815
MEDC	Negatif	Trading	Negatif	Sell	1,100	1,080	1,055	1,125	1,145	1,040
MIKA	Positif	Trading	Negatif	Hold	3,035	2,970	2,885	3,120	3,185	2,840
MNCN	Positif	Oversold	Negatif	Speculative Buy	725	715	710	730	740	700
PGAS	Positif	Oversold	Negatif	Speculative Buy	1,775	1,755	1,730	1,800	1,820	1,705
PTBA	Positif	Trading	Negatif	Hold	3,690	3,670	3,650	3,710	3,730	3,595
SMGR	Positif	Oversold	Negatif	Speculative Buy	6,750	6,600	6,450	6,900	7,050	6,350
TBIG	Positif	Trading	Positif	Speculative Buy	2,330	2,305	2,290	2,345	2,370	2,255
TINS	Negatif	Oversold	Positif	Speculative Buy	1,175	1,150	1,135	1,190	1,215	1,115
TLKM	Negatif	Trading	Positif	Hold	3,795	3,745	3,705	3,835	3,885	3,645
TOWR	Positif	Trading	Negatif	Hold	1,075	1,065	1,050	1,090	1,100	1,035
TPIA	Negatif	OverBought	Positif	Sell	2,480	2,470	2,450	2,500	2,510	2,415
UNTR	Negatif	Oversold	Positif	Speculative Buy	26,575	26,275	26,100	26,750	27,050	25,700
UNVR	Negatif	Trading	Positif	Hold	4,780	4,750	4,710	4,820	4,850	4,640
WIKA	Negatif	Oversold	Positif	Speculative Buy	815	810	800	825	830	790

## OUR TEAM

**Sukarno Alatas**

Head of Equity Research

[sukarno@kiwoom.co.id](mailto:sukarno@kiwoom.co.id) | 021 5010 5800**Michelle Abadi**

Associate

[michelle@kiwoom.co.id](mailto:michelle@kiwoom.co.id) | 021 5010 5800**Abdul Azis Setyo Wibowo**

Equity Research Analyst

[azis@kiwoom.co.id](mailto:azis@kiwoom.co.id) | 021 5010 5800**Rizky Khaerunnisa**

Equity Research Analyst

[rizky@kiwoom.co.id](mailto:rizky@kiwoom.co.id) | 021 5010 5800**OTHER DISCLOSURES**

All Kiwoom's research reports made available to clients are simultaneously available on our own website <http://www.kiwoom.co.id/>. Not all research content is redistributed, e-mailed or made available to third-party aggregators. For all research reports available on a particular stock, please contact your sales representative. Any data discrepancies in this report could be the result of different calculations and/or adjustments.

**DISCLAIMER** This report has been prepared and issued by PT Kiwoom Sekuritas Indonesia. Information has been obtained from sources believed to be reliable but Kiwoom Securities do not warrant its completeness or accuracy. Forward-looking information or statements in this report contain information that is based on forecast of future results, estimates of amounts not yet determinable, assumptions, and therefore involve known and unknown risks and uncertainties which may cause the actual results, performance or achievements of their subject matter to be materially different from current expectations.

To the fullest extent allowed by law, PT Kiwoom Sekuritas Indonesia shall not be liable for any direct, indirect or consequential losses, loss of profits, damages, costs or expenses incurred or suffered by any person or organization arising from reliance on or use of any information contained on this report. The information that we provide should not be construed in any manner whatsoever as, personalized advice.

No mention of a particular security in this report constitutes a recommendation to buy, sell or hold that or any security, or that any particular security, portfolio of securities, transaction or investment strategy is suitable for any specific person. This report is being supplied to you solely for your information and may not be reproduced by, further distributed to or published in whole or in part by, any other person.