

**JCI Range Today 6,784 – 6,796 (Support), 6,933 – 6,953 (Resistance)**



JCI closed down with a bearish candle. Stochastic indicator dead cross, MACD histogram is moving positive (golden cross line) and volume is increasing. If JCI is able to move bullish, there is a chance for JCI to strengthen to the resistance at the range of 6,933 – 6,953. If it is bearish again, JCI is expected to move again to the support at the range of 6,784 – 6,796.

## AKRA

Akr Corporindo Tbk, Indonesia, Jakarta:AKRA, D

EMA (13, close, 0)  
EMA (34, close, 0)



**(AKRA)** The price closed higher with a bullish candle. The price has the opportunity to strengthen again to the nearest resistance. Stochastic indicator is bullish, MACD histogram is moving positive (bullish line) and volume is increasing. Confirmation to buy if the next candle is bullish again or buy on support if it goes down first. We suggest being careful if it fails to stay above the support level. **(Trading Buy)**

### TRADING STRATEGY:

1. Target Price: The price has a bullish opportunity to test the resistance level 1,445. If it breaks level 1,445 then the price will go to level 1,455. We recommend to be careful if the price fails to break through or turn around the support area.

2. Stop Loss: To minimize the risk of loss, we recommend placing a stop loss at level 1,380.

Entry Buy : 1,400 – 1,420  
Target Price : 1,445 – 1,455  
Support : 1,385 – 1,400  
Cutloss : 1,380

**ANTM**

Aneka Tambang Persero Tbk, Indonesia, Jakarta:ANTM, D



**(ANTM)** The price closed higher with a bullish candle. The price has the opportunity to strengthen again to the nearest resistance. Stochastic golden cross indicator, MACD histogram is moving positive (bullish line) and volume is increasing. Confirmation to buy if the next candle is bullish again or buy on support if it goes down first. We suggest being careful if it fails to stay above the support level. **(Trading Buy)**

**TRADING STRATEGY:**

1. Target Price: The price has a bullish opportunity to test the resistance level 2,050. If it breaks level 2,050 then the price will go to level 2,080. We recommend to be careful if the price fails to break through or turn around the support area.

2. Stop Loss: To minimize the risk of loss, we recommend placing a stop loss at level 1,960.

Entry Buy : 1,985 – 2,010  
Target Price : 2,050 – 2,070  
Support : 1,965 – 1,985  
Cutloss : 1,960

## TOWR

Sarana Menara Nusantara Tbk, Indonesia, Jakarta:TOWR, D

EMA (13, close, 0)  
EMA (34, close, 0)



**(TOWR)** The price closed higher with a bullish candle. The price has the opportunity to strengthen again for the nearest resistance test. Stochastic indicator is bullish, MACD histogram is moving in the positive direction (golden cross line) and volume is increasing. Confirmation to buy if the next candle is bullish again or buy on support if it goes down first. We suggest being careful if it fails to stay above the support level. **(Trading Buy)**

### TRADING STRATEGY:

1. Target Price: The price has a bullish opportunity to test the resistance level 1,110. If it breaks level 1,110 then the price will go to level 1,120. We recommend to be careful if the price fails to break through or turn around the support area.

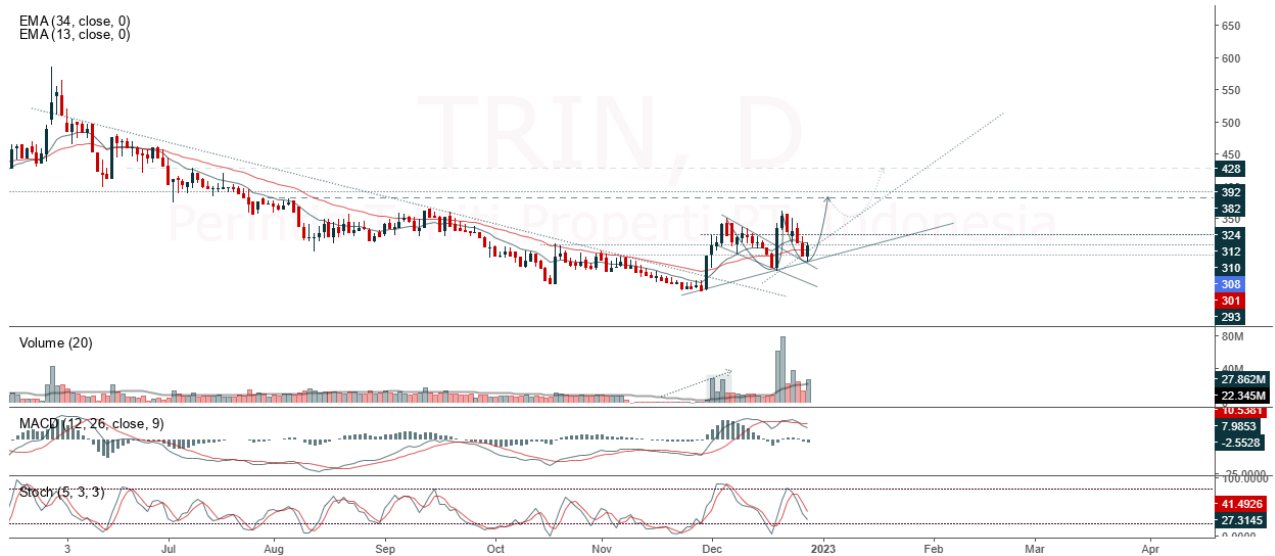
2. Stop Loss: To minimize the risk of loss, we recommend placing a stop loss at level 1,060.

Entry Buy : 1,075 – 1,090  
Target Price : 1,110 – 1,120  
Support : 1,065 – 1,075  
Cutloss : 1,060

**TRIN**

Perintis Trinita Properti PT, Indonesia, Jakarta:TRIN, D

EMA (34, close, 0)  
EMA (13, close, 0)



**(TRIN)** The price closed higher after touching the support trendline. The price has the opportunity to strengthen again to the nearest resistance. Stochastic indicator is bullish, MACD histogram is moving negative (dead line cross) and volume is increasing. Confirmation to buy if the next candle is bullish again or buy on support if it goes down first. We suggest being careful if it fails to stay above the support level. **(Trading Buy)**

**TRADING STRATEGY:**

- 1.Target Price: The price has a bullish opportunity to test the resistance level 322. If it breaks level 322 then the price will go to level 334. We recommend to be careful if the price fails to break through or turn around the support area.
2. Stop Loss: To minimize the risk of loss, we recommend placing a stop loss at level 294.

Entry Buy : 302 – 308  
Target Price : 322 – 334  
Support : 296 – 302  
Cutloss : 294

**Forecast – Technical Analysis**

Ticker	MAS	RSI Rec	MACD Trend	Recomm.	Pivot Point	Support		Resistance		Stop Loss Level
						1	2	1	2	
JCI	Negatif	Trading	Positif	Hold	6,900	6,825	6,775	6,950	7,025	6,675
ADRO	Positif	Trading	Negatif	Hold	3,745	3,720	3,675	3,790	3,815	3,620
AMRT	Negatif	OverBought	Positif	Sell	2,745	2,670	2,585	2,830	2,905	2,545
ANTM	Positif	Trading	Positif	Spec. Buy	1,990	1,965	1,920	2,035	2,060	1,890
ARTO	Positif	Oversold	Positif	Buy	3,560	3,515	3,470	3,605	3,650	3,415
ASII	Positif	Oversold	Positif	Buy	5,675	5,600	5,525	5,750	5,825	5,425
BBCA	Positif	Trading	Negatif	Hold	8,625	8,600	8,525	8,700	8,725	8,400
BBNI	Positif	Trading	Negatif	Hold	9,275	9,175	9,075	9,375	9,475	8,925
BBRI	Negatif	Trading	Negatif	Sell	4,845	4,810	4,775	4,880	4,915	4,705
BBTN	Negatif	Trading	Positif	Hold	1,380	1,345	1,305	1,420	1,455	1,285
BFIN	Negatif	Trading	Negatif	Sell	1,030	1,015	1,000	1,045	1,060	985
BMRI	Positif	Trading	Negatif	Hold	9,950	9,925	9,800	10,075	10,100	9,650
BRIS	Negatif	Trading	Positif	Hold	1,280	1,250	1,225	1,305	1,335	1,205
BRPT	Negatif	Trading	Positif	Hold	775	765	750	790	800	740
BUKA	Negatif	Trading	Positif	Hold	269	265	263	271	275	259
CPIN	Positif	Trading	Positif	Spec. Buy	5,925	5,850	5,775	6,000	6,075	5,700
EMTK	Negatif	Oversold	Positif	Spec. Buy	1,020	985	940	1,065	1,100	925
ERAA	Negatif	Trading	Negatif	Sell	385	380	373	392	397	367
EXCL	Negatif	Trading	Positif	Hold	2,140	2,110	2,080	2,170	2,200	2,050
GOTO	Positif	Oversold	Positif	Buy	91	90	88	93	94	86
HMSP	Positif	Oversold	Negatif	Spec. Buy	885	875	865	895	905	850
HRUM	Positif	Oversold	Negatif	Spec. Buy	1,615	1,600	1,585	1,630	1,645	1,560
ICBP	Positif	Trading	Negatif	Hold	10,125	10,075	9,950	10,250	10,300	9,800
INCO	Positif	Trading	Negatif	Hold	7,125	7,075	7,000	7,200	7,250	6,900
INDF	Positif	Trading	Negatif	Hold	6,775	6,675	6,600	6,850	6,950	6,500
INDY	Positif	Trading	Negatif	Hold	2,805	2,765	2,715	2,855	2,895	2,670
INKP	Positif	Oversold	Negatif	Spec. Buy	8,950	8,875	8,775	9,050	9,125	8,650
INTP	Negatif	Trading	Negatif	Sell	10,000	9,950	9,850	10,100	10,150	9,700
ITMG	Positif	Trading	Positif	Spec. Buy	40,150	39,700	39,150	40,700	41,150	38,575
JPFA	Positif	Trading	Positif	Spec. Buy	1,305	1,295	1,285	1,315	1,325	1,265
KLBF	Positif	Trading	Negatif	Hold	2,030	2,020	2,010	2,040	2,050	1,980
MDKA	Positif	Trading	Negatif	Hold	4,090	4,050	4,010	4,130	4,170	3,950
MEDC	Negatif	Trading	Negatif	Sell	1,075	1,050	1,025	1,100	1,125	1,010
MIKA	Negatif	Trading	Negatif	Sell	3,035	2,990	2,945	3,080	3,125	2,900
MNCN	Negatif	Oversold	Negatif	Spec. Buy	735	725	710	750	760	700
PGAS	Positif	Oversold	Negatif	Spec. Buy	1,760	1,750	1,740	1,770	1,780	1,715
PTBA	Positif	Trading	Negatif	Hold	3,685	3,655	3,635	3,705	3,735	3,580
SMGR	Negatif	Oversold	Negatif	Spec. Buy	6,675	6,650	6,575	6,750	6,775	6,475
TBIG	Positif	Trading	Positif	Spec. Buy	2,325	2,320	2,305	2,340	2,345	2,270
TINS	Negatif	Oversold	Positif	Spec. Buy	1,170	1,160	1,145	1,185	1,195	1,125
TLKM	Positif	Trading	Positif	Spec. Buy	3,765	3,715	3,665	3,815	3,865	3,610
TOWR	Negatif	Trading	Negatif	Sell	1,080	1,070	1,055	1,095	1,105	1,040
TPIA	Negatif	OverBought	Positif	Sell	2,485	2,480	2,465	2,500	2,505	2,430
UNTR	Positif	Oversold	Positif	Buy	26,375	26,075	25,700	26,750	27,050	25,325
UNVR	Negatif	Trading	Positif	Hold	4,780	4,735	4,670	4,845	4,890	4,595
WIKA	Positif	Oversold	Positif	Buy	810	805	795	820	825	785

## OUR TEAM

**Sukarno Alatas**

Head of Equity Research

[sukarno@kiwoom.co.id](mailto:sukarno@kiwoom.co.id) | 021 5010 5800**Michelle Abadi**

Associate

[michelle@kiwoom.co.id](mailto:michelle@kiwoom.co.id) | 021 5010 5800**Abdul Azis Setyo Wibowo**

Equity Research Analyst

[azis@kiwoom.co.id](mailto:azis@kiwoom.co.id) | 021 5010 5800**Rizky Khaerunnisa**

Equity Research Analyst

[rizky@kiwoom.co.id](mailto:rizky@kiwoom.co.id) | 021 5010 5800**OTHER DISCLOSURES**

All Kiwoom's research reports made available to clients are simultaneously available on our own website <http://www.kiwoom.co.id/>. Not all research content is redistributed, e-mailed or made available to third-party aggregators. For all research reports available on a particular stock, please contact your sales representative. Any data discrepancies in this report could be the result of different calculations and/or adjustments.

**DISCLAIMER** This report has been prepared and issued by PT Kiwoom Sekuritas Indonesia. Information has been obtained from sources believed to be reliable but Kiwoom Securities do not warrant its completeness or accuracy. Forward-looking information or statements in this report contain information that is based on forecast of future results, estimates of amounts not yet determinable, assumptions, and therefore involve known and unknown risks and uncertainties which may cause the actual results, performance or achievements of their subject matter to be materially different from current expectations.

To the fullest extent allowed by law, PT Kiwoom Sekuritas Indonesia shall not be liable for any direct, indirect or consequential losses, loss of profits, damages, costs or expenses incurred or suffered by any person or organization arising from reliance on or use of any information contained on this report. The information that we provide should not be construed in any manner whatsoever as, personalized advice.

No mention of a particular security in this report constitutes a recommendation to buy, sell or hold that or any security, or that any particular security, portfolio of securities, transaction or investment strategy is suitable for any specific person. This report is being supplied to you solely for your information and may not be reproduced by, further distributed to or published in whole or in part by, any other person.