

JCI Range Today 6,786 – 6,796 (Support), 6,933 – 6,953 (Resistance)

Jakarta Stock Exchange Composite Index, Indonesia, Jakarta:JKSE, D

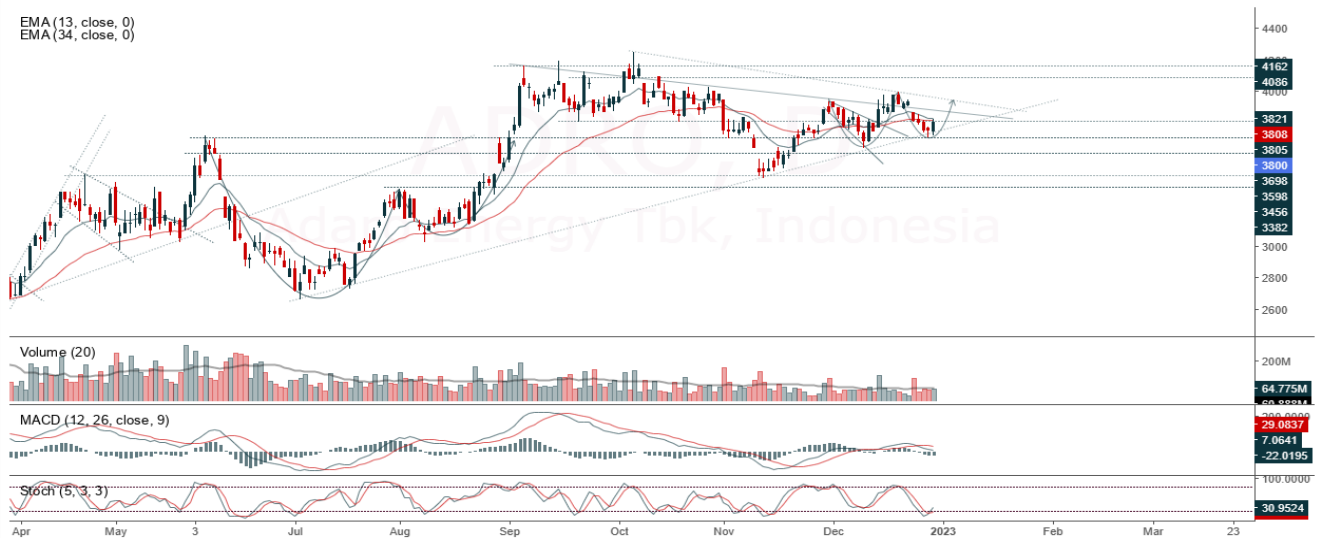


JCI closed higher with a bullish candle. Stochastic indicator is bearish, MACD histogram is moving positive (golden cross line) and volume is increasing. If JCI is able to move bullish, there is a chance for JCI to strengthen to the resistance at the range of 6,933 – 6,953. If it is bearish again, JCI is expected to move again to the support at the range of 6,786 – 6,796.

ADRO

Adaro Energy Tbk, Indonesia, Jakarta:ADRO, D

EMA (13, close, 0)
EMA (34, close, 0)



(ADRO) The price closed higher and formed a swing low. The price has the opportunity to strengthen again to the nearest resistance. Stochastic golden cross indicator, MACD histogram is moving negative (bearish line) and volume slightly increased. Confirmation to buy if the next candle is bullish again or buy on support if it goes down first. We suggest being careful if it fails to stay above the support level. **(Trading Buy)**

TRADING STRATEGY:

1. Target Price: The price has a bullish opportunity to test the resistance level 3,900. If it breaks level 3,900 then the price will go to level 3,930. We recommend to be careful if the price fails to break through or turn around the support area.

2. Stop Loss: To minimize the risk of loss, we recommend placing a stop loss at level 3,920.

Entry Buy : 3,770 – 3,800
 Target Price : 3,900 – 3,930
 Support : 3,730 – 3,770
 Cutloss : 3,720

AMRT

Sumber Alfaria Trijaya Tbk, Indonesia, Jakarta:AMRT, D

EMA (13, close, 0)
EMA (34, close, 0)



(AMRT) The price closed higher with a bullish candle. The price has the opportunity to strengthen again to the nearest resistance. The stochastic indicator has the potential to return to the golden cross, MACD histogram is moving positive (bullish line) and volume is increasing. Confirmation to buy if the next candle is bullish again or buy on support if it goes down first. We suggest being careful if it fails to stay above the support level. **(Trading Buy)**

TRADING STRATEGY:

1. Target Price: The price has a bullish opportunity to test the resistance level 2,970. If it breaks level 2,970 then the price will go to level 2,820. We recommend to be careful if the price fails to break through or turn around the support area.

2. Stop Loss: To minimize the risk of loss, we recommend placing a stop loss at level 2,640.

Entry Buy	: 2,680 – 2,010
Target Price	: 2,970 – 2,820
Support	: 2,650 – 2,680
Cutloss	: 2,640

ASII

Astra International Tbk, Indonesia, Jakarta:ASII, D



(ASII) The price closed higher with a bullish candle. The price has the opportunity to strengthen again for the nearest resistance test. Stochastic indicator is bullish, MACD histogram is moving in the positive direction (golden cross line) and volume is increasing. Confirmation to buy if the next candle is bullish again or buy on support if it goes down first. We suggest being careful if it fails to stay above the support level. **(Trading Buy)**

TRADING STRATEGY:

1. Target Price: The price has a bullish opportunity to test the resistance level 5,750. If it breaks level 5,750 then the price will go to level 5,800. We recommend to be careful if the price fails to break through or turn around the support area.

2. Stop Loss: To minimize the risk of loss, we recommend placing a stop loss at level 5,525.

- Entry Buy : 5,575 – 5,650
- Target Price : 5,750 – 5,800
- Support : 5,550 – 5,575
- Cutloss : 5,525

MIKA

Mitra Keluarga Karyasehat Tbk PT, Indonesia, Jakarta: MIKA, D

EMA (13, close, 0)
EMA (34, close, 0)



(MIKA) The price closed higher with a bullish candle. The price has the opportunity to strengthen again to the nearest resistance. Stochastic indicator is bullish, MACD histogram is moving negative (deadline cross) and volume is increasing. Confirmation to buy if the next candle is bullish again or buy on support if it goes down first. We suggest being careful if it fails to stay above the support level. **(Trading Buy)**

TRADING STRATEGY:

1. Target Price: The price has a bullish opportunity to test the resistance level 3,190. If it breaks level 3,190 then the price will go to level 3,230. We recommend to be careful if the price fails to break through or turn around the support area.
2. Stop Loss: To minimize the risk of loss, we recommend placing a stop loss at level 2,990.

Entry Buy : 3,060 – 3,100
 Target Price : 3,190 – 3,230
 Support : 3,000 – 3,060
 Cutloss : 2,990

Forecast – Technical Analysis

Ticker	MA5	RSI Rec	MACD Trend	Recomm.	Pivot Point	Support		Resistance		Stop Loss Level
						1	2	1	2	
JCI	Negatif	Trading	Positif	Hold	6,850	6,800	6,750	6,900	6,925	6,650
ADRO	Positif	Trading	Negatif	Hold	3,770	3,715	3,660	3,825	3,880	3,605
AMRT	Negatif	Trading	Positif	Hold	2,700	2,625	2,540	2,785	2,860	2,500
ANTM	Positif	Trading	Positif	Spec. Buy	2,000	1,980	1,950	2,030	2,050	1,920
ARTO	Positif	Oversold	Positif	Buy	3,495	3,440	3,345	3,590	3,645	3,295
ASII	Positif	Oversold	Positif	Buy	5,625	5,575	5,500	5,700	5,750	5,400
BBCA	Negatif	Trading	Negatif	Sell	8,550	8,500	8,450	8,600	8,650	8,325
BBNI	Positif	Trading	Negatif	Hold	9,225	9,175	9,125	9,275	9,325	8,975
BBRI	Positif	Trading	Negatif	Hold	4,840	4,810	4,770	4,880	4,910	4,700
BBTN	Negatif	Trading	Positif	Hold	1,340	1,325	1,305	1,360	1,375	1,285
BFIN	Negatif	Oversold	Negatif	Spec. Buy	1,025	1,020	1,010	1,035	1,040	995
BMRI	Negatif	Trading	Negatif	Sell	9,925	9,900	9,825	10,000	10,025	9,675
BRIS	Negatif	Trading	Positif	Hold	1,285	1,265	1,245	1,305	1,325	1,225
BRPT	Negatif	Trading	Positif	Hold	765	755	745	775	785	735
BUKA	Negatif	Trading	Positif	Hold	271	265	263	273	279	259
CPIN	Negatif	Trading	Positif	Hold	5,825	5,775	5,700	5,900	5,950	5,625
EMTK	Positif	Oversold	Positif	Buy	1,010	980	950	1,040	1,070	935
ERAA	Positif	Oversold	Negatif	Spec. Buy	382	379	376	385	388	370
EXCL	Negatif	Trading	Positif	Hold	2,150	2,105	2,070	2,185	2,230	2,035
GOTO	Negatif	Oversold	Positif	Spec. Buy	94	90	85	99	103	84
HMSP	Positif	Oversold	Negatif	Spec. Buy	865	850	840	875	890	825
HRUM	Positif	Oversold	Negatif	Spec. Buy	1,605	1,595	1,575	1,625	1,635	1,555
ICBP	Positif	Trading	Negatif	Hold	10,050	9,950	9,600	10,400	10,500	9,450
INCO	Positif	Trading	Negatif	Hold	7,150	7,100	7,050	7,200	7,250	6,925
INDF	Negatif	Trading	Negatif	Sell	6,750	6,700	6,650	6,800	6,850	6,550
INDY	Positif	Oversold	Negatif	Spec. Buy	2,750	2,710	2,670	2,790	2,830	2,630
INKP	Positif	Oversold	Negatif	Spec. Buy	8,850	8,775	8,700	8,925	9,000	8,575
INTP	Negatif	Trading	Positif	Hold	9,975	9,900	9,850	10,025	10,100	9,700
ITMG	Positif	Trading	Negatif	Hold	39,650	39,300	38,950	40,000	40,350	38,375
JPFA	Positif	Trading	Positif	Spec. Buy	1,300	1,285	1,270	1,315	1,330	1,250
KLBF	Positif	Trading	Negatif	Hold	2,055	2,020	1,985	2,090	2,125	1,955
MDKA	Positif	Trading	Negatif	Hold	4,075	4,025	3,995	4,105	4,155	3,935
MEDC	Positif	Trading	Negatif	Hold	1,040	1,025	1,010	1,055	1,070	990
MIKA	Positif	Trading	Negatif	Hold	3,050	2,990	2,930	3,110	3,170	2,885
MNCN	Negatif	Trading	Positif	Hold	735	730	725	740	745	715
PGAS	Positif	Oversold	Negatif	Spec. Buy	1,765	1,745	1,730	1,780	1,800	1,700
PTBA	Positif	Trading	Negatif	Hold	3,675	3,655	3,645	3,685	3,705	3,590
SMGR	Positif	Oversold	Negatif	Spec. Buy	6,675	6,625	6,575	6,725	6,775	6,475
TBIG	Positif	Trading	Positif	Spec. Buy	2,320	2,300	2,280	2,340	2,360	2,245
TINS	Negatif	Oversold	Positif	Spec. Buy	1,165	1,160	1,150	1,175	1,180	1,135
TLKM	Negatif	Trading	Positif	Hold	3,750	3,710	3,670	3,790	3,830	3,615
TOWR	Negatif	Trading	Positif	Hold	1,090	1,080	1,070	1,100	1,110	1,050
TPIA	Negatif	OverBought	Positif	Sell	2,535	2,490	2,445	2,580	2,625	2,410
UNTR	Positif	Oversold	Positif	Buy	26,100	25,875	25,425	26,550	26,775	25,050
UNVR	Positif	Trading	Positif	Spec. Buy	4,740	4,720	4,680	4,780	4,800	4,610
WIKA	Positif	Oversold	Positif	Buy	810	805	795	820	825	785

OUR TEAM

Sukarno Alatas

Head of Equity Research

sukarno@kiwoom.co.id | 021 5010 5800**Michelle Abadi**

Associate

michelle@kiwoom.co.id | 021 5010 5800**Abdul Azis Setyo Wibowo**

Equity Research Analyst

azis@kiwoom.co.id | 021 5010 5800**Rizky Khaerunnisa**

Equity Research Analyst

rizky@kiwoom.co.id | 021 5010 5800**OTHER DISCLOSURES**

All Kiwoom's research reports made available to clients are simultaneously available on our own website <http://www.kiwoom.co.id/>. Not all research content is redistributed, e-mailed or made available to third-party aggregators. For all research reports available on a particular stock, please contact your sales representative. Any data discrepancies in this report could be the result of different calculations and/or adjustments.

DISCLAIMER This report has been prepared and issued by PT Kiwoom Sekuritas Indonesia. Information has been obtained from sources believed to be reliable but Kiwoom Securities do not warrant its completeness or accuracy. Forward-looking information or statements in this report contain information that is based on forecast of future results, estimates of amounts not yet determinable, assumptions, and therefore involve known and unknown risks and uncertainties which may cause the actual results, performance or achievements of their subject matter to be materially different from current expectations.

To the fullest extent allowed by law, PT Kiwoom Sekuritas Indonesia shall not be liable for any direct, indirect or consequential losses, loss of profits, damages, costs or expenses incurred or suffered by any person or organization arising from reliance on or use of any information contained on this report. The information that we provide should not be construed in any manner whatsoever as, personalized advice.

No mention of a particular security in this report constitutes a recommendation to buy, sell or hold that or any security, or that any particular security, portfolio of securities, transaction or investment strategy is suitable for any specific person. This report is being supplied to you solely for your information and may not be reproduced by, further distributed to or published in whole or in part by, any other person.