

JCI Range Today 6,621 – 6,638 (Support), 6,734 – 6,747 (Resistance)



JCI closed slightly higher and tended to be sideways. The stochastic indicator is bearish, MACD histogram is moving negative (deadline cross) and volume is increasing slightly. If JCI is able to move bullish, there is a chance for JCI to go to the resistance at the range of 6,734 – 6,747. If it returns to bearish, JCI is expected to continue weakening to the support at the range of 6,621 – 6,638.

ANTM

Aneka Tambang Persero Tbk, Indonesia, Jakarta:ANTM, D



(ANTM) The price closed higher with a bullish candle. The price has the opportunity to strengthen again to the nearest resistance. Stochastic golden cross indicator, MACD histogram is moving positive (bullish line) and volume is increasing. Confirmation to buy if the next candle is bullish again or buy on support if it goes down first. We suggest being careful if it fails to stay above the support level. **(Trading Buy)**

TRADING STRATEGY:

1. Target Price: The price has a bullish opportunity to test the resistance level 2,100. If it breaks level 2,100 then the price will go to level 2,130. We recommend to be careful if the price fails to break through or turn around the support area.

2. Stop Loss: To minimize the risk of loss, we recommend placing a stop loss at level 1,980.

Entry Buy : 2,010 – 2,060
Target Price : 2,100 – 2,130
Support : 1,985 – 2,010
Cutloss : 1,980

BFIN

BFI Finance Indonesia Tbk, Indonesia, Jakarta: BFIN, D



(BFIN) The price closed higher with a bullish candle. The price has the opportunity to strengthen again to the nearest resistance. Stochastic indicator is bullish, MACD histogram is moving positive (bullish line) and volume has increased significantly. Confirmation to buy if the next candle is bullish again or buy on support if it goes down first. We suggest being careful if it fails to stay above the support level. **(Trading Buy)**

TRADING STRATEGY:

1. Target Price: The price has a bullish opportunity to test the resistance level 1,145. If it breaks level 1,145 then the price will go to level 1,170. We recommend to be careful if the price fails to break through or turn around the support area.

2. Stop Loss: To minimize the risk of loss, we recommend placing a stop loss at level 1,080.

Entry Buy : 1,095 – 1,120
 Target Price : 1,145 – 1,170
 Support : 1,085 – 1,095
 Cutloss : 1,080

INTP

Indocement Tunggak Prakarsa, Indonesia, Jakarta:INTP, D

EMA (13, close, 0)
EMA (34, close, 0)



(INTP) The price closed higher with a bullish candle. The price has the opportunity to strengthen again to the nearest resistance. Stochastic indicator is bullish, MACD histogram is moving positive (bullish line) and volume is decreasing. Confirmation to buy if the next candle is bullish again or buy on support if it goes down first. We suggest being careful if it fails to stay above the support level. **(Trading Buy)**

TRADING STRATEGY:

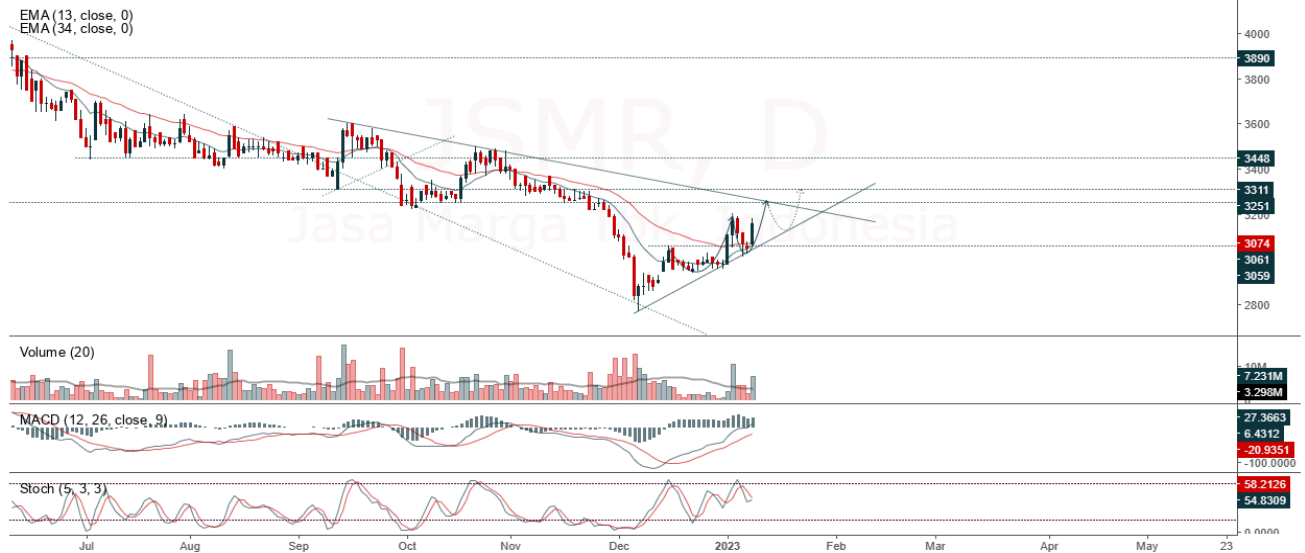
1. Target Price: The price has a bullish opportunity to test the resistance level 10,475. If it breaks level 10,475 then the price will go to level 10,575. We recommend to be careful if the price fails to break through or turn around the support area.

2. Stop Loss: To minimize the risk of loss, we recommend placing a stop loss at level 9,975.

Entry Buy	: 10,100 – 10,275
Target Price	: 10,475 – 10,575
Support	: 10,000 – 10,100
Cutloss	: 9,975

JSMR

Jasa Marga Tbk, Indonesia, Jakarta:JSMR, D



(JSMR) The price closed higher with a bullish candle. The price has the opportunity to strengthen again to the nearest resistance. Stochastic golden cross indicator, MACD histogram is moving positive (bullish line) and volume is increasing. Confirmation to buy if the next candle is bullish again or buy on support if it goes down first. We suggest being careful if it fails to stay above the support level. **(Trading Buy)**

TRADING STRATEGY:

- 1.Target Price: The price has a bullish opportunity to test the resistance level 3,230. If it breaks level 3,230 then the price will go to level 3,270. We recommend to be careful if the price fails to break through or turn around the support area.
2. Stop Loss: To minimize the risk of loss, we recommend placing a stop loss at level 3,050.

Entry Buy : 3,120 – 3,160
 Target Price : 3,230 – 3,270
 Support : 3,060 – 3,120
 Cutloss : 3,050

Forecast – Technical Analysis

Ticker	MA5	RSI Rec	MACD Trend	Recomm.	Pivot Point	Support		Resistance		Stop Loss Level
						1	2	1	2	
JCI	Positif	Oversold	Negatif	Spec. Buy	6,675	6,650	6,600	6,725	6,775	6,500
ADRO	Positif	Oversold	Negatif	Spec. Buy	3,085	2,995	2,895	3,185	3,275	2,850
AMRT	Negatif	Trading	Positif	Hold	2,770	2,710	2,640	2,840	2,900	2,600
ANTM	Negatif	Trading	Negatif	Sell	2,040	2,005	1,980	2,065	2,100	1,950
ARTO	Positif	Oversold	Positif	Buy	3,045	2,915	2,795	3,165	3,295	2,750
ASII	Positif	Oversold	Negatif	Spec. Buy	5,400	5,325	5,175	5,550	5,625	5,100
BBCA	Positif	Oversold	Negatif	Spec. Buy	8,400	8,325	8,275	8,450	8,525	8,150
BBNI	Positif	Oversold	Negatif	Spec. Buy	8,975	8,900	8,800	9,075	9,150	8,650
BBRI	Positif	Oversold	Negatif	Spec. Buy	4,590	4,540	4,500	4,630	4,680	4,435
BBTN	Positif	Trading	Positif	Spec. Buy	1,340	1,320	1,300	1,360	1,380	1,280
BFIN	Positif	Trading	Positif	Spec. Buy	1,100	1,070	1,045	1,125	1,155	1,030
BMRI	Positif	Trading	Negatif	Hold	9,725	9,625	9,475	9,875	9,975	9,350
BRIS	Negatif	OverBought	Positif	Sell	1,380	1,355	1,325	1,410	1,435	1,305
BRPT	Negatif	OverBought	Positif	Sell	815	805	785	835	845	775
BUKA	Positif	Oversold	Negatif	Spec. Buy	260	253	248	265	272	244
CPIN	Negatif	Trading	Negatif	Sell	6,100	5,975	5,775	6,300	6,425	5,700
EMTK	Positif	Oversold	Positif	Buy	990	975	955	1,010	1,025	940
ERAA	Negatif	Trading	Positif	Hold	393	388	383	398	403	377
EXCL	Negatif	Trading	Positif	Hold	2,285	2,245	2,225	2,305	2,345	2,190
GOTO	Negatif	Oversold	Positif	Spec. Buy	94	92	89	97	99	87
HMSP	Positif	Oversold	Negatif	Spec. Buy	830	825	805	850	855	795
HRUM	Positif	Oversold	Negatif	Spec. Buy	1,555	1,525	1,485	1,595	1,625	1,460
ICBP	Negatif	Trading	Negatif	Sell	10,200	10,125	10,075	10,250	10,325	9,925
INCO	Negatif	Trading	Positif	Hold	7,400	7,300	7,175	7,525	7,625	7,075
INDF	Negatif	OverBought	Negatif	Strong Sell	6,925	6,850	6,725	7,050	7,125	6,625
INDY	Positif	Oversold	Negatif	Spec. Buy	2,445	2,395	2,335	2,505	2,555	2,300
INKP	Positif	Oversold	Negatif	Spec. Buy	8,625	8,500	8,400	8,725	8,850	8,250
INTP	Positif	Trading	Negatif	Hold	10,175	10,075	9,900	10,350	10,450	9,750
ITMG	Positif	Oversold	Negatif	Spec. Buy	35,050	34,375	33,575	35,850	36,525	33,075
JPFA	Negatif	OverBought	Positif	Sell	1,375	1,360	1,335	1,400	1,415	1,315
KLBF	Negatif	Trading	Negatif	Sell	2,080	2,055	2,020	2,115	2,140	1,985
MDKA	Negatif	Trading	Positif	Hold	4,395	4,300	4,225	4,470	4,565	4,160
MEDC	Positif	Trading	Negatif	Hold	1,025	1,005	980	1,050	1,070	965
MIKA	Positif	Trading	Negatif	Hold	2,935	2,865	2,795	3,005	3,075	2,750
MNCN	Positif	Oversold	Positif	Buy	715	700	680	735	750	670
PGAS	Positif	Oversold	Negatif	Spec. Buy	1,560	1,510	1,455	1,615	1,665	1,430
PTBA	Positif	Oversold	Negatif	Spec. Buy	3,355	3,260	3,165	3,450	3,545	3,120
SMGR	Negatif	Trading	Positif	Hold	7,125	7,075	6,975	7,225	7,275	6,875
TBIG	Positif	Oversold	Negatif	Spec. Buy	2,160	2,095	2,030	2,225	2,290	1,995
TINS	Positif	Oversold	Positif	Buy	1,160	1,145	1,130	1,175	1,190	1,115
TLKM	Positif	Trading	Positif	Spec. Buy	3,760	3,730	3,700	3,790	3,820	3,645
TOWR	Negatif	Trading	Positif	Hold	1,155	1,135	1,115	1,175	1,195	1,095
TPIA	Positif	Oversold	Negatif	Spec. Buy	2,340	2,330	2,310	2,360	2,370	2,275
UNTR	Positif	Oversold	Negatif	Spec. Buy	24,800	24,400	23,875	25,325	25,725	23,500
UNVR	Negatif	Trading	Negatif	Sell	4,745	4,720	4,665	4,800	4,825	4,595
WIKA	Positif	Oversold	Negatif	Spec. Buy	750	725	705	770	795	695

OUR TEAM

Sukarno Alatas

Head of Equity Research

sukarno@kiwoom.co.id | 021 5010 5800**Michelle Abadi**

Associate

michelle@kiwoom.co.id | 021 5010 5800**Abdul Azis Setyo Wibowo**

Equity Research Analyst

azis@kiwoom.co.id | 021 5010 5800**Rizky Khaerunnisa**

Equity Research Analyst

rizky@kiwoom.co.id | 021 5010 5800**OTHER DISCLOSURES**

All Kiwoom's research reports made available to clients are simultaneously available on our own website <http://www.kiwoom.co.id/>. Not all research content is redistributed, e-mailed or made available to third-party aggregators. For all research reports available on a particular stock, please contact your sales representative. Any data discrepancies in this report could be the result of different calculations and/or adjustments.

DISCLAIMER This report has been prepared and issued by PT Kiwoom Sekuritas Indonesia. Information has been obtained from sources believed to be reliable but Kiwoom Securities do not warrant its completeness or accuracy. Forward-looking information or statements in this report contain information that is based on forecast of future results, estimates of amounts not yet determinable, assumptions, and therefore involve known and unknown risks and uncertainties which may cause the actual results, performance or achievements of their subject matter to be materially different from current expectations.

To the fullest extent allowed by law, PT Kiwoom Sekuritas Indonesia shall not be liable for any direct, indirect or consequential losses, loss of profits, damages, costs or expenses incurred or suffered by any person or organization arising from reliance on or use of any information contained on this report. The information that we provide should not be construed in any manner whatsoever as, personalized advice.

No mention of a particular security in this report constitutes a recommendation to buy, sell or hold that or any security, or that any particular security, portfolio of securities, transaction or investment strategy is suitable for any specific person. This report is being supplied to you solely for your information and may not be reproduced by, further distributed to or published in whole or in part by, any other person.