

JCI Range Today 6,627 – 6,641 (Support), 6,726 – 6,747 (Resistance)

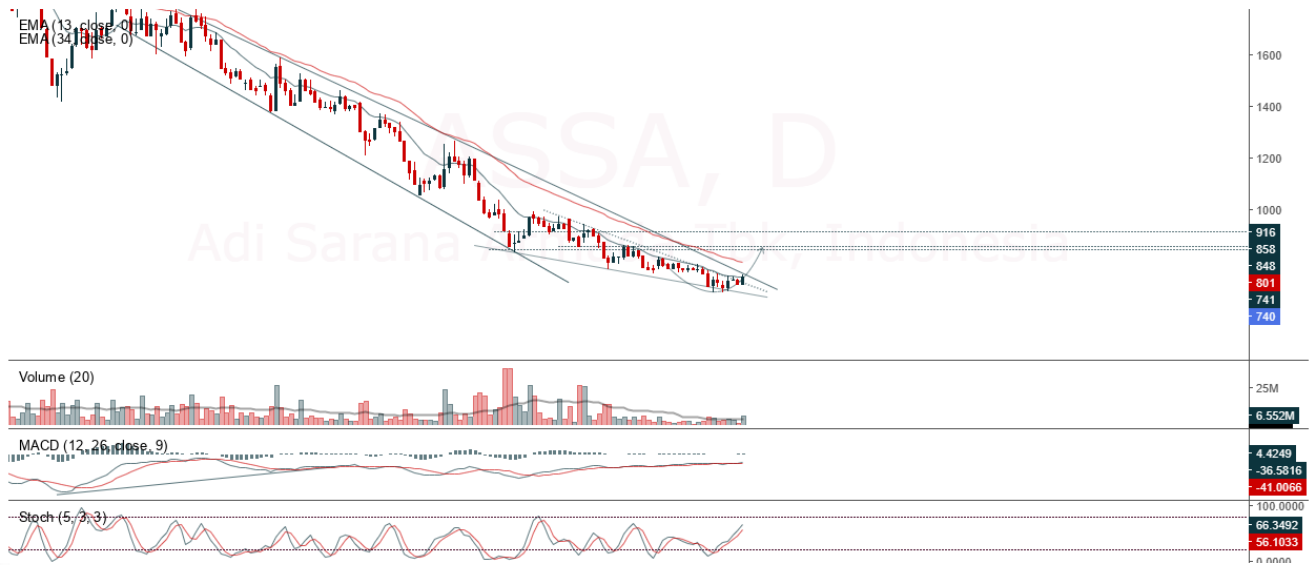
Jakarta Stock Exchange Composite Index, Indonesia, Jakarta:JKSE, D



JCI closed higher with a bullish candle. Stochastic indicator is bullish, MACD histogram is moving negative but in a positive direction (bearish line, slightly sloping) and volume is decreasing. If JCI is able to move bullish, there is a chance for JCI to go to the resistance at the range of 6,726 – 6,747. If it moves bearish, JCI is expected to weaken again to the support at the range of 6,627 – 6,641.

ASSA

Adi Sarana Armada Tbk, Indonesia, Jakarta:ASSA, D



(ASSA) The price closed higher and formed a swing low (HL). The price has the opportunity to strengthen again to the nearest resistance. Stochastic indicator is bullish, MACD histogram is moving positive (bullish line) and volume is increasing. Confirmation to buy if the next candle is bullish again or buy on support if it goes down first. We suggest being careful if it fails to stay above the support level. **(Trading Buy)**

TRADING STRATEGY:

1. Target Price: The price has a bullish opportunity to test the resistance level 760. If it breaks level 760 then the price will go to level 780. We recommend to be careful if the price fails to break through or turn around the support area.

2. Stop Loss: To minimize the risk of loss, we recommend placing a stop loss at level 710.

Entry Buy : 725 – 740
Target Price : 760 – 780
Support : 715 – 755
Cutloss : 710

BFIN

BFI Finance Indonesia Tbk, Indonesia, Jakarta: BFIN, D



(BFIN) The price closed higher and was testing the closest resistance. The price has the opportunity to strengthen again to the next resistance. Stochastic indicator is bullish, MACD histogram is moving positive (golden cross line) and volume is increasing. Confirmation to buy if the next candle is bullish again or buy on support if it goes down first. We suggest being careful if it fails to stay above the support level. **(Trading Buy)**

TRADING STRATEGY:

1. Target Price: The price has a bullish opportunity to test the resistance level 1,150. If it breaks level 1,150 then the price will go to level 1,170. We recommend to be careful if the price fails to break through or turn around the support area.

2. Stop Loss: To minimize the risk of loss, we recommend placing a stop loss at level 1,085.

Entry Buy : 1,105 – 1,125
Target Price : 1,150 – 1,170
Support : 1,090 – 1,105
Cutloss : 1,085

ERAA

Erajaya Swasembada Tbk, Indonesia, Jakarta:ERAA, D

EMA (13, close, 0)
EMA (34, close, 0)



(ERAA) The price closed higher with a bullish candle. The price has the opportunity to strengthen again to the nearest resistance. Stochastic indicator has a golden cross opportunity, MACD histogram is moving positive (bullish line) and volume is neutral. Confirmation to buy if the next candle is bullish again or buy on support if it goes down first. We suggest being careful if it fails to stay above the support level. **(Trading Buy)**

TRADING STRATEGY:

1.Target Price: The price has a bullish opportunity to test the resistance level 424. If it breaks level 424 then the price will go to level 430. We recommend to be careful if the price fails to break through or turn around the support area.

2. Stop Loss: To minimize the risk of loss, we recommend placing a stop loss at level 402.

Entry Buy : 410 – 416
Target Price : 424 – 430
Support : 404 – 410
Cutloss : 402

TLKM

Telkom Indonesia (Persero) Tbk PT, Indonesia, Jakarta:TLKM, D



(TLKM) The price closed higher with a bullish candle. The price has the opportunity to strengthen again to the nearest resistance. Stochastic indicator is bullish, MACD histogram is moving positive (golden cross line) and volume is neutral. Confirmation to buy if the next candle is bullish again or buy on support if it goes down first. We suggest being careful if it fails to stay above the support level. **(Trading Buy)**

TRADING STRATEGY:

- 1.Target Price: The price has a bullish opportunity to test the resistance level 3,930. If it breaks level 3,930 then the price will go to level 3,960. We recommend to be careful if the price fails to break through or turn around the support area.
2. Stop Loss: To minimize the risk of loss, we recommend placing a stop loss at level 3,760.

Entry Buy : 3,790 – 3,850
 Target Price : 3,930 – 3,960
 Support : 3,770 – 3,790
 Cutloss : 3,760

Forecast – Technical Analysis

Ticker	MA5	RSI Rec	MACD Trend	Recomm.	Pivot Point	Support		Resistance		Stop Loss Level
						1	2	1	2	
JCI	Positif	Oversold	Negatif	Spec. Buy	6,650	6,625	6,600	6,700	6,725	6,500
ADRO	Negatif	Oversold	Negatif	Specu. Buy	3,110	3,090	3,070	3,130	3,150	3,025
AMRT	Positif	Trading	Positif	Spec. Buy	2,725	2,655	2,595	2,785	2,855	2,555
ANTM	Negatif	OverBought	Positif	Sell	2,175	2,145	2,125	2,195	2,225	2,090
ARTO	Negatif	Oversold	Positif	Spec. Buy	3,040	2,950	2,770	3,220	3,310	2,730
ASII	Negatif	Trading	Negatif	Sell	5,550	5,500	5,425	5,625	5,675	5,350
BBCA	Positif	Oversold	Negatif	Spec. Buy	8,125	8,025	7,975	8,175	8,275	7,850
BBNI	Positif	Oversold	Negatif	Spec. Buy	8,750	8,675	8,625	8,800	8,875	8,475
BBRI	Positif	Oversold	Negatif	Spec. Buy	4,475	4,420	4,365	4,530	4,585	4,300
BBTN	Positif	Oversold	Negatif	Spec. Buy	1,255	1,240	1,215	1,280	1,295	1,195
BFIN	Positif	Trading	Positif	Spec. Buy	1,110	1,090	1,070	1,130	1,150	1,050
BMRI	Positif	Oversold	Negatif	Spec. Buy	9,225	9,075	8,975	9,325	9,475	8,825
BRIS	Positif	Trading	Positif	Spec. Buy	1,330	1,305	1,290	1,345	1,370	1,270
BRPT	Negatif	OverBought	Positif	Sell	835	830	815	850	855	800
BUKA	Negatif	Trading	Positif	Hold	263	260	257	266	269	253
CPIN	Positif	OverBought	Positif	Hold	6,150	6,100	6,025	6,225	6,275	5,925
EMTK	Negatif	Oversold	Positif	Spec. Buy	1,010	985	960	1,035	1,060	945
ERAA	Negatif	Trading	Positif	Hold	411	405	399	417	423	393
EXCL	Negatif	Trading	Positif	Hold	2,295	2,240	2,215	2,320	2,375	2,180
GOTO	Negatif	Trading	Positif	Hold	106	104	102	108	110	100
HMSP	Positif	Oversold	Negatif	Spec. Buy	825	820	810	835	840	800
HRUM	Negatif	Trading	Positif	Hold	1,685	1,670	1,645	1,710	1,725	1,620
ICBP	Negatif	OverBought	Positif	Sell	10,375	10,300	10,100	10,575	10,650	9,950
INCO	Positif	Trading	Positif	Spec. Buy	7,450	7,400	7,300	7,550	7,600	7,175
INDF	Positif	Trading	Negatif	Hold	6,675	6,650	6,575	6,750	6,775	6,475
INDY	Negatif	Oversold	Negatif	Specu. Buy	2,535	2,500	2,465	2,570	2,605	2,430
INKP	Negatif	Oversold	Positif	Spec. Buy	8,600	8,575	8,450	8,725	8,750	8,325
INTP	Positif	Trading	Positif	Spec. Buy	10,300	10,200	10,125	10,375	10,475	9,975
ITMG	Negatif	Oversold	Negatif	Specu. Buy	35,075	34,875	34,425	35,525	35,725	33,925
JPFA	Positif	Trading	Positif	Spec. Buy	1,330	1,310	1,295	1,345	1,365	1,275
KLBF	Positif	Trading	Negatif	Hold	2,050	2,035	2,010	2,075	2,090	1,975
MDKA	Negatif	OverBought	Positif	Sell	4,555	4,510	4,445	4,620	4,665	4,380
MEDC	Negatif	Trading	Positif	Hold	1,145	1,135	1,120	1,160	1,170	1,105
MIKA	Negatif	Trading	Negatif	Sell	3,000	2,910	2,830	3,080	3,170	2,790
MNCN	Positif	Oversold	Negatif	Spec. Buy	680	665	660	685	700	650
PGAS	Negatif	Oversold	Negatif	Specu. Buy	1,540	1,525	1,510	1,555	1,570	1,485
PTBA	Negatif	Oversold	Negatif	Specu. Buy	3,325	3,295	3,275	3,345	3,375	3,225
SMGR	Negatif	Trading	Positif	Hold	7,325	7,200	7,075	7,450	7,575	6,975
TBIG	Negatif	Oversold	Negatif	Specu. Buy	2,110	2,060	2,010	2,160	2,210	1,980
TINS	Negatif	Trading	Positif	Hold	1,215	1,195	1,175	1,235	1,255	1,155
TLKM	Negatif	Trading	Positif	Hold	3,815	3,780	3,745	3,850	3,885	3,690
TOWR	Positif	Trading	Positif	Spec. Buy	1,145	1,140	1,125	1,160	1,165	1,105
TPIA	Positif	Trading	Negatif	Hold	2,350	2,335	2,320	2,365	2,380	2,285
UNTR	Positif	Oversold	Positif	Buy	24,225	24,075	23,975	24,325	24,475	23,600
UNVR	Positif	Trading	Positif	Spec. Buy	4,780	4,755	4,730	4,805	4,830	4,655
WIKA	Positif	Oversold	Negatif	Spec. Buy	685	670	660	695	710	650

OUR TEAM

Sukarno Alatas

Head of Equity Research

sukarno@kiwoom.co.id | 021 5010 5800**Michelle Abadi**

Associate

michelle@kiwoom.co.id | 021 5010 5800**Abdul Azis Setyo Wibowo**

Equity Research Analyst

azis@kiwoom.co.id | 021 5010 5800**Rizky Khaerunnisa**

Equity Research Analyst

rizky@kiwoom.co.id | 021 5010 5800**OTHER DISCLOSURES**

All Kiwoom's research reports made available to clients are simultaneously available on our own website <http://www.kiwoom.co.id/>. Not all research content is redistributed, e-mailed or made available to third-party aggregators. For all research reports available on a particular stock, please contact your sales representative. Any data discrepancies in this report could be the result of different calculations and/or adjustments.

DISCLAIMER This report has been prepared and issued by PT Kiwoom Sekuritas Indonesia. Information has been obtained from sources believed to be reliable but Kiwoom Securities do not warrant its completeness or accuracy. Forward-looking information or statements in this report contain information that is based on forecast of future results, estimates of amounts not yet determinable, assumptions, and therefore involve known and unknown risks and uncertainties which may cause the actual results, performance or achievements of their subject matter to be materially different from current expectations.

To the fullest extent allowed by law, PT Kiwoom Sekuritas Indonesia shall not be liable for any direct, indirect or consequential losses, loss of profits, damages, costs or expenses incurred or suffered by any person or organization arising from reliance on or use of any information contained on this report. The information that we provide should not be construed in any manner whatsoever as, personalized advice.

No mention of a particular security in this report constitutes a recommendation to buy, sell or hold that or any security, or that any particular security, portfolio of securities, transaction or investment strategy is suitable for any specific person. This report is being supplied to you solely for your information and may not be reproduced by, further distributed to or published in whole or in part by, any other person.