

JCI Range Today 6,708 – 6,727 (Support), 6,801 – 6,813 (Resistance)

Jakarta Stock Exchange Composite Index, Indonesia, Jakarta:JKSE, D

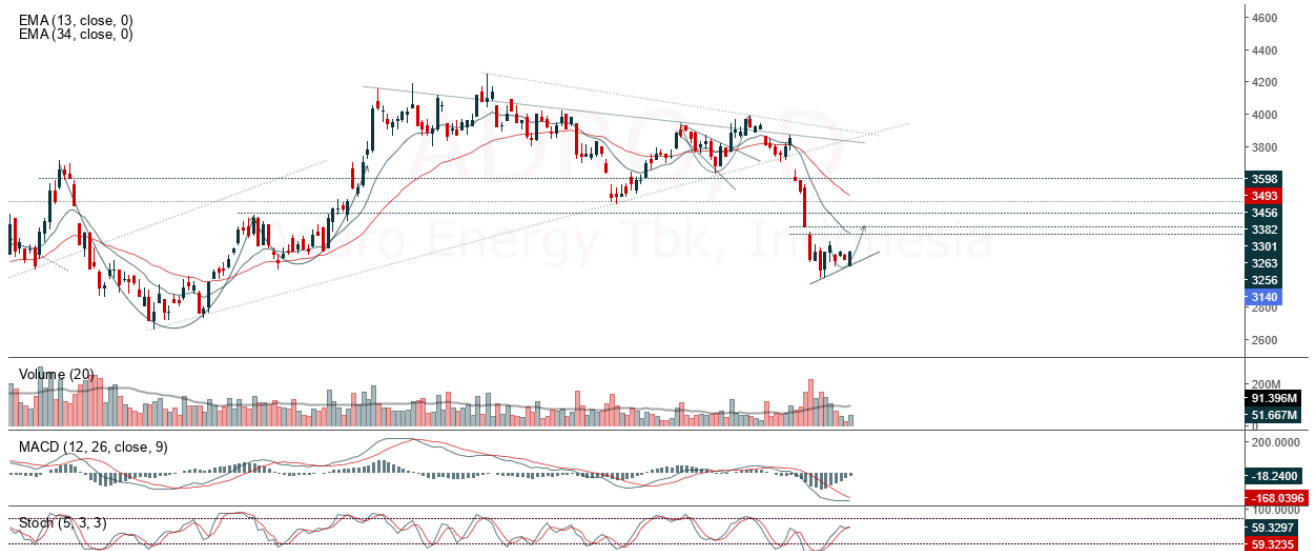


JCI closed higher and touched the resistance trendline. Stochastic indicator is bullish, MACD histogram is moving positive (golden cross line) and volume is increasing. If JCI is able to move bullish, there is a chance for JCI to go to the resistance at the range of 6,801 – 6,813. If it moves bearish, JCI is expected to weaken again to the support at the range of 6,708 – 6,727.

ADRO

Adaro Energy Tbk, Indonesia, Jakarta:ADRO, D

EMA (13, close, 0)
EMA (34, close, 0)



(ADRO) The price closed higher and formed a swing low (HL). The price has the opportunity to strengthen again to the nearest resistance. Stochastic indicator is bullish, MACD histogram is moving in the positive direction (bullish line) and volume is increasing. Confirmation to buy if the next candle is bullish again or buy on support if it goes down first. We suggest being careful if it fails to stay above the support level. **(Trading Buy)**

TRADING STRATEGY:

1. Target Price: The price has a bullish opportunity to test the resistance level 3,210. If it breaks level 3,210 then the price will go to level 3,240. We recommend to be careful if the price fails to break through or turn around the support area.

2. Stop Loss: To minimize the risk of loss, we recommend placing a stop loss at level 3,040.

Entry Buy : 3,090 – 3,140
Target Price : 3,210 – 3,240
Support : 3,050 – 3,090
Cutloss : 3,040

ELSA

Elusa Tbk, Indonesia, Jakarta:ELSA, D

EMA (13, close, 0)



(ELSA) The price closed higher and was testing the closest resistance. The price has the opportunity to strengthen again to the next resistance. Stochastic indicator is bullish, MACD histogram is moving positive (golden cross line) and volume is increasing slightly. Confirmation to buy if the next candle is bullish again or buy on support if it goes down first. We suggest being careful if it fails to stay above the support level. **(Trading Buy)**

TRADING STRATEGY:

1. Target Price: The price has a bullish opportunity to test the resistance level 320. If it breaks level 320 then the price will go to level 324. We recommend to be careful if the price fails to break through or turn around the support area.

2. Stop Loss: To minimize the risk of loss, we recommend placing a stop loss at level 300.

Entry Buy : 306 – 312
 Target Price : 320 – 324
 Support : 302 – 306
 Cutloss : 300

MPPA

Matahari Putra Prima Tbk, Indonesia, Jakarta:MPPA, D



(MPPA) The price closed higher with a bullish candle. The price has the opportunity to strengthen again to the nearest resistance. Stochastic indicator is bullish, MACD histogram is moving positive (golden cross line) and volume is increasing slightly. Confirmation to buy if the next candle is bullish again or buy on support if it goes down first. We suggest being careful if it fails to stay above the support level. **(Trading Buy)**

TRADING STRATEGY:

1. Target Price: The price has a bullish opportunity to test the resistance level 133. If it breaks level 133 then the price will go to level 137. We recommend to be careful if the price fails to break through or turn around the support area.

2. Stop Loss: To minimize the risk of loss, we recommend placing a stop loss at level 122.

Entry Buy : 125 – 128
Target Price : 133 – 137
Support : 123 – 125
Cutloss : 122

SRTG

Saratoga Investama Sedaya, Indonesia, Jakarta:SRTG, D



(SRTG) The price closed higher with a bullish candle. The price has the opportunity to strengthen again to the nearest resistance. Stochastic indicator is bullish, MACD histogram is moving in the positive direction (golden cross potential line) and volume is increasing. Confirmation to buy if the next candle is bullish again or buy on support if it goes down first. We suggest being careful if it fails to stay above the support level. **(Trading Buy)**

TRADING STRATEGY:

1.Target Price: The price has a bullish opportunity to test the resistance level 2,490. If it breaks level 2,490 then the price will go to level 2,510. We recommend to be careful if the price fails to break through or turn around the support area.

2. Stop Loss: To minimize the risk of loss, we recommend placing a stop loss at level 2,360.

Entry Buy : 2,400 – 2,430
 Target Price : 2,490 – 2,510
 Support : 2,370 – 2,400
 Cutloss : 2,360

Forecast – Technical Analysis

| Ticker | MA5 | RSI Rec | MACD Trend | Recomm. | Pivot Point | Support | | Resistance | | Stop Loss Level |
|--------|---------|------------|------------|------------|-------------|---------|--------|------------|--------|-----------------|
| | | | | | | 1 | 2 | 1 | 2 | |
| JCI | Negatif | Trading | Negatif | Sell | 6,750 | 6,675 | 6,625 | 6,800 | 6,850 | 6,525 |
| ADRO | Positif | Oversold | Negatif | Spec. Buy | 3,100 | 3,050 | 3,000 | 3,150 | 3,200 | 2,955 |
| AMRT | Positif | Trading | Negatif | Hold | 2,705 | 2,660 | 2,615 | 2,750 | 2,795 | 2,575 |
| ANTM | Negatif | OverBought | Positif | Sell | 2,235 | 2,180 | 2,125 | 2,290 | 2,345 | 2,095 |
| ARTO | Negatif | Oversold | Positif | Spec. Buy | 3,080 | 2,985 | 2,920 | 3,145 | 3,240 | 2,875 |
| ASII | Negatif | Trading | Positif | Hold | 5,575 | 5,500 | 5,425 | 5,650 | 5,725 | 5,350 |
| BBCA | Positif | Oversold | Negatif | Spec. Buy | 8,250 | 8,150 | 8,025 | 8,375 | 8,475 | 7,900 |
| BBNI | Positif | Oversold | Negatif | Spec. Buy | 8,850 | 8,750 | 8,625 | 8,975 | 9,075 | 8,500 |
| BBRI | Negatif | Oversold | Negatif | Specu. Buy | 4,545 | 4,505 | 4,475 | 4,575 | 4,615 | 4,405 |
| BBTN | Negatif | Oversold | Negatif | Specu. Buy | 1,280 | 1,260 | 1,250 | 1,290 | 1,310 | 1,230 |
| BFIN | Negatif | OverBought | Positif | Sell | 1,125 | 1,115 | 1,090 | 1,150 | 1,160 | 1,075 |
| BMRI | Negatif | Oversold | Negatif | Specu. Buy | 9,600 | 9,350 | 9,150 | 9,800 | 10,050 | 9,000 |
| BRIS | Negatif | Trading | Positif | Hold | 1,350 | 1,320 | 1,300 | 1,370 | 1,400 | 1,280 |
| BRPT | Negatif | OverBought | Positif | Sell | 835 | 830 | 820 | 845 | 850 | 810 |
| BUKA | Negatif | Trading | Positif | Hold | 266 | 258 | 254 | 270 | 278 | 250 |
| CPIN | Positif | OverBought | Positif | Hold | 6,125 | 6,075 | 6,000 | 6,200 | 6,250 | 5,900 |
| EMTK | Negatif | Oversold | Positif | Spec. Buy | 1,015 | 995 | 980 | 1,030 | 1,050 | 965 |
| ERAA | Positif | Trading | Positif | Spec. Buy | 420 | 416 | 410 | 426 | 430 | 404 |
| EXCL | Positif | Trading | Positif | Spec. Buy | 2,310 | 2,280 | 2,260 | 2,330 | 2,360 | 2,225 |
| GOTO | Negatif | Trading | Positif | Hold | 112 | 106 | 102 | 116 | 122 | 100 |
| HMSP | Positif | Oversold | Positif | Buy | 830 | 820 | 815 | 835 | 845 | 805 |
| HRUM | Negatif | Trading | Positif | Hold | 1,715 | 1,685 | 1,660 | 1,740 | 1,770 | 1,635 |
| ICBP | Negatif | Trading | Positif | Hold | 10,375 | 10,250 | 10,175 | 10,450 | 10,575 | 10,025 |
| INCO | Negatif | Trading | Positif | Hold | 7,575 | 7,400 | 7,275 | 7,700 | 7,875 | 7,150 |
| INDF | Negatif | Trading | Negatif | Sell | 6,775 | 6,700 | 6,600 | 6,875 | 6,950 | 6,500 |
| INDY | Positif | Oversold | Negatif | Spec. Buy | 2,520 | 2,450 | 2,400 | 2,570 | 2,640 | 2,365 |
| INKP | Negatif | Oversold | Positif | Spec. Buy | 8,700 | 8,575 | 8,500 | 8,775 | 8,900 | 8,350 |
| INTP | Negatif | Trading | Positif | Hold | 10,075 | 9,875 | 9,600 | 10,350 | 10,550 | 9,450 |
| ITMG | Positif | Oversold | Negatif | Spec. Buy | 35,050 | 34,550 | 34,050 | 35,550 | 36,050 | 33,550 |
| JPFA | Positif | Trading | Negatif | Hold | 1,325 | 1,305 | 1,295 | 1,335 | 1,355 | 1,275 |
| KLBF | Positif | Trading | Negatif | Hold | 2,070 | 2,045 | 2,030 | 2,085 | 2,110 | 1,995 |
| MDKA | Negatif | OverBought | Positif | Sell | 4,730 | 4,605 | 4,490 | 4,845 | 4,970 | 4,420 |
| MEDC | Negatif | Trading | Positif | Hold | 1,180 | 1,125 | 1,085 | 1,220 | 1,275 | 1,065 |
| MIKA | Negatif | Trading | Negatif | Sell | 2,995 | 2,920 | 2,875 | 3,040 | 3,115 | 2,830 |
| MNCN | Positif | Oversold | Negatif | Spec. Buy | 680 | 675 | 665 | 690 | 695 | 655 |
| PGAS | Positif | Oversold | Negatif | Spec. Buy | 1,545 | 1,530 | 1,515 | 1,560 | 1,575 | 1,495 |
| PTBA | Positif | Oversold | Negatif | Spec. Buy | 3,340 | 3,285 | 3,250 | 3,375 | 3,430 | 3,200 |
| SMGR | Negatif | OverBought | Positif | Sell | 7,300 | 7,200 | 7,075 | 7,425 | 7,525 | 6,975 |
| TBIG | Positif | Oversold | Negatif | Spec. Buy | 2,100 | 2,050 | 2,020 | 2,130 | 2,180 | 1,990 |
| TINS | Negatif | OverBought | Positif | Sell | 1,265 | 1,235 | 1,195 | 1,305 | 1,335 | 1,180 |
| TLKM | Negatif | Trading | Positif | Hold | 3,920 | 3,845 | 3,790 | 3,975 | 4,050 | 3,730 |
| TOWR | Positif | Trading | Positif | Spec. Buy | 1,145 | 1,135 | 1,120 | 1,160 | 1,170 | 1,100 |
| TPIA | Negatif | Trading | Negatif | Sell | 2,360 | 2,335 | 2,300 | 2,395 | 2,420 | 2,265 |
| UNTR | Positif | Oversold | Negatif | Spec. Buy | 24,350 | 24,100 | 23,975 | 24,475 | 24,725 | 23,600 |
| UNVR | Negatif | Trading | Positif | Hold | 4,765 | 4,725 | 4,685 | 4,805 | 4,845 | 4,610 |
| WIKA | Positif | Oversold | Negatif | Spec. Buy | 685 | 675 | 665 | 695 | 705 | 655 |

OUR TEAM

Sukarno Alatas

Head of Equity Research

sukarno@kiwoom.co.id | 021 5010 5800**Michelle Abadi**

Associate

michelle@kiwoom.co.id | 021 5010 5800**Abdul Azis Setyo Wibowo**

Equity Research Analyst

azis@kiwoom.co.id | 021 5010 5800**Rizky Khaerunnisa**

Equity Research Analyst

rizky@kiwoom.co.id | 021 5010 5800**OTHER DISCLOSURES**

All Kiwoom's research reports made available to clients are simultaneously available on our own website <http://www.kiwoom.co.id/>. Not all research content is redistributed, e-mailed or made available to third-party aggregators. For all research reports available on a particular stock, please contact your sales representative. Any data discrepancies in this report could be the result of different calculations and/or adjustments.

DISCLAIMER This report has been prepared and issued by PT Kiwoom Sekuritas Indonesia. Information has been obtained from sources believed to be reliable but Kiwoom Securities do not warrant its completeness or accuracy. Forward-looking information or statements in this report contain information that is based on forecast of future results, estimates of amounts not yet determinable, assumptions, and therefore involve known and unknown risks and uncertainties which may cause the actual results, performance or achievements of their subject matter to be materially different from current expectations.

To the fullest extent allowed by law, PT Kiwoom Sekuritas Indonesia shall not be liable for any direct, indirect or consequential losses, loss of profits, damages, costs or expenses incurred or suffered by any person or organization arising from reliance on or use of any information contained on this report. The information that we provide should not be construed in any manner whatsoever as, personalized advice.

No mention of a particular security in this report constitutes a recommendation to buy, sell or hold that or any security, or that any particular security, portfolio of securities, transaction or investment strategy is suitable for any specific person. This report is being supplied to you solely for your information and may not be reproduced by, further distributed to or published in whole or in part by, any other person.