

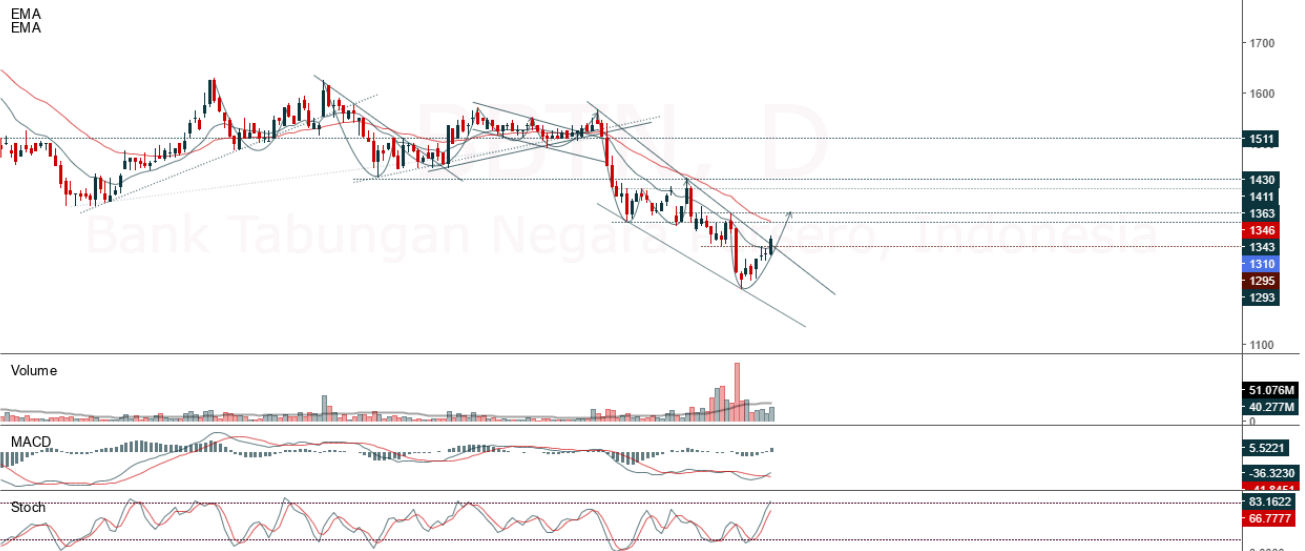
**JCI Range Today 6,754 – 6,790 (Support), 6,856 – 6,888 (Resistance)**



JCI managed to close higher and break up to the closest resistance. The stochastic indicator is bullish, the MACD histogram is moving positive (golden cross line) and the volume trend is down. If JCI is able to move bullish, there is a chance for JCI to go to the resistance at the range of 6,856 – 6,888. If it moves bearish, JCI is expected to weaken again to the support at the range of 6,754 – 6,790.

**BBTN**

Bank Tabungan Negara Persero, Indonesia, Jakarta:BBTN, D



**(BBTN)** The price closed higher and broke up to the resistance. The price has the opportunity to strengthen again to the nearest resistance. Stochastic indicator is bullish, MACD histogram is moving positive (bullish line) and volume is increasing. Confirmation to buy if the next candle is bullish again or buy on support if it goes down first. We suggest being careful if it fails to stay above the support level. **(Trading Buy)**

**TRADING STRATEGY:**

1. Target Price: The price has a bullish opportunity to test the resistance level 1,340. If it breaks level 1,340 then the price will go to level 1,355. We recommend to be careful if the price fails to break through or turn around the support area.

2. Stop Loss: To minimize the risk of loss, we recommend placing a stop loss at level 1,270.

Entry Buy : 1,290 – 1,310  
 Target Price : 1,340 – 1,355  
 Support : 1,275 – 1,290  
 Cutloss : 1,270

**ISAT**

Indosat Tbk, Indonesia, Jakarta:ISAT, D

EMA (13, close, 0)  
EMA (34, close, 0)



**(ISAT)** The price closed higher and breakup to the consolidation area. The price has the opportunity to strengthen again to the nearest resistance. Stochastic indicator is bullish, MACD histogram is moving positive (bullish line) and volume trend is increasing. Confirmation to buy if the next candle is bullish again or buy on support if it goes down first. We suggest being careful if it fails to stay above the support level. **(Trading Buy)**

**TRADING STRATEGY:**

1. Target Price: The price has a bullish opportunity to test the resistance level 6,350. If it breaks level 6,350 then the price will go to level 6,425. We recommend to be careful if the price fails to break through or turn around the support area.

2. Stop Loss: To minimize the risk of loss, we recommend placing a stop loss at level 6,025.

Entry Buy : 6,100 – 6,200  
Target Price : 6,350 – 6,425  
Support : 6,050 – 6,100  
Cutloss : 6,025

**LPPF**

Matahari Department Store Tbk, Indonesia, Jakarta:LPPF, D

EMA (13, close, 0)  
EMA (34, close, 0)



**(LPPF)** The price closed higher with a bullish candle. The price has the opportunity to strengthen again to the nearest resistance. Stochastic indicator is bullish, MACD histogram is moving positive (golden cross line) and volume trend is increasing slightly. Confirmation to buy if the next candle is bullish again or buy on support if it goes down first. We suggest being careful if it fails to stay above the support level. **(Trading Buy)**

**TRADING STRATEGY:**

1.Target Price: The price has a bullish opportunity to test the resistance level 4,550. If it breaks level 4,550 then the price will go to level 4,600. We recommend to be careful if the price fails to break through or turn around the support area.

2. Stop Loss: To minimize the risk of loss, we recommend placing a stop loss at level 4,175.

- Entry Buy : 4,250 – 4,360
- Target Price : 4,550 – 4,600
- Support : 4,200 – 4,250
- Cutloss : 4,175

**MPMX**

Mitra Pinasthika Mustika, Indonesia, Jakarta:MPMX, D

EMA (13, close, 0)  
EMA (34, close, 0)



**(MPMX)** The price closed higher with a bullish candle. The price has the opportunity to strengthen again to the nearest resistance. Stochastic indicator is bullish, MACD histogram is moving positive (bullish line) and volume is increasing. Confirmation to buy if the next candle is bullish again or buy on support if it goes down first. We suggest being careful if it fails to stay above the support level. **(Trading Buy)**

**TRADING STRATEGY:**

1.Target Price: The price has a bullish opportunity to test the resistance level 1,220. If it breaks level 1,220 then the price will go to level 1,250. We recommend to be careful if the price fails to break through or turn around the support area.

2. Stop Loss: To minimize the risk of loss, we recommend placing a stop loss at level 1,160.

- Entry Buy : 1,175 – 1,190
- Target Price : 1,220 – 1,250
- Support : 1,165 – 1,175
- Cutloss : 1,160

**Forecast – Technical Analysis**

Ticker	MA5	RSI Rec	MACD Trend	Recomm.	Pivot Point	Support		Resistance		Stop Loss Level
						1	2	1	2	
JCI	Negatif	Trading	Positif	Hold	6,800	6,750	6,725	6,825	6,850	6,625
ADRO	Negatif	Oversold	Negatif	Specu. Buy	3,185	3,140	3,095	3,230	3,275	3,050
AMRT	Negatif	Trading	Negatif	Sell	2,740	2,715	2,690	2,765	2,790	2,645
ANTM	Negatif	OverBought	Positif	Sell	2,290	2,255	2,240	2,305	2,340	2,205
ARTO	Positif	Oversold	Positif	Buy	3,170	3,070	3,000	3,240	3,340	2,955
ASII	Negatif	Trading	Positif	Hold	5,750	5,650	5,525	5,875	5,975	5,450
BBCA	Negatif	Trading	Negatif	Sell	8,325	8,300	8,225	8,400	8,425	8,100
BBNI	Negatif	Trading	Negatif	Sell	8,925	8,850	8,775	9,000	9,075	8,625
BBRI	Negatif	Trading	Negatif	Sell	4,605	4,575	4,555	4,625	4,655	4,485
BBTN	Negatif	Trading	Negatif	Sell	1,295	1,275	1,255	1,315	1,335	1,235
BFIN	Negatif	Trading	Positif	Hold	1,130	1,115	1,095	1,150	1,165	1,075
BMRI	Negatif	Trading	Negatif	Sell	9,675	9,525	9,375	9,825	9,975	9,225
BRIS	Negatif	Trading	Positif	Hold	1,345	1,335	1,325	1,355	1,365	1,305
BRPT	Negatif	OverBought	Positif	Sell	840	835	825	850	855	810
BUKA	Positif	Trading	Positif	Spec. Buy	259	256	253	262	265	249
CPIN	Positif	Trading	Positif	Spec. Buy	6,075	6,025	5,950	6,150	6,200	5,850
EMTK	Positif	Oversold	Positif	Buy	1,005	1,000	985	1,020	1,025	970
ERAA	Negatif	Trading	Positif	Hold	421	408	399	430	443	393
EXCL	Negatif	OverBought	Positif	Sell	2,395	2,345	2,305	2,435	2,485	2,270
GOTO	Negatif	Trading	Positif	Hold	114	112	109	117	119	107
HMSP	Negatif	Oversold	Positif	Spec. Buy	825	820	810	835	840	795
HRUM	Negatif	Trading	Positif	Hold	1,740	1,725	1,715	1,750	1,765	1,690
ICBP	Positif	OverBought	Positif	Hold	10,475	10,425	10,350	10,550	10,600	10,175
INCO	Negatif	Trading	Positif	Hold	7,525	7,425	7,300	7,650	7,750	7,175
INDF	Negatif	Trading	Negatif	Sell	6,900	6,850	6,800	6,950	7,000	6,700
INDY	Negatif	Trading	Positif	Hold	2,570	2,540	2,510	2,600	2,630	2,470
INKP	Positif	Trading	Positif	Spec. Buy	8,800	8,700	8,650	8,850	8,950	8,500
INTP	Positif	Trading	Negatif	Hold	9,900	9,700	9,550	10,050	10,250	9,400
ITMG	Negatif	Oversold	Negatif	Specu. Buy	35,975	35,000	34,050	36,925	37,900	33,550
JPFA	Positif	Trading	Negatif	Hold	1,295	1,275	1,255	1,315	1,335	1,235
KLBF	Negatif	Trading	Negatif	Sell	2,080	2,060	2,030	2,110	2,130	2,000
MDKA	Negatif	OverBought	Positif	Sell	4,795	4,705	4,635	4,865	4,955	4,565
MEDC	Negatif	OverBought	Positif	Sell	1,215	1,175	1,130	1,260	1,300	1,115
MIKA	Positif	Trading	Negatif	Hold	3,090	3,035	2,980	3,145	3,200	2,935
MNCN	Positif	Oversold	Negatif	Spec. Buy	680	675	665	690	695	655
PGAS	Negatif	Oversold	Negatif	Specu. Buy	1,575	1,555	1,535	1,595	1,615	1,510
PTBA	Negatif	Trading	Negatif	Sell	3,450	3,410	3,370	3,490	3,530	3,320
SMGR	Positif	Trading	Positif	Spec. Buy	7,075	6,975	6,875	7,175	7,275	6,775
TBIG	Positif	Oversold	Negatif	Spec. Buy	2,120	2,080	2,050	2,150	2,190	2,020
TINS	Negatif	OverBought	Positif	Sell	1,280	1,265	1,255	1,290	1,305	1,235
TLKM	Negatif	Trading	Positif	Hold	3,915	3,845	3,815	3,945	4,015	3,755
TOWR	Negatif	OverBought	Positif	Sell	1,160	1,155	1,135	1,180	1,185	1,120
TPIA	Positif	Trading	Negatif	Hold	2,350	2,340	2,320	2,370	2,380	2,285
UNTR	Positif	Oversold	Positif	Buy	25,450	24,625	23,775	26,300	27,125	23,400
UNVR	Negatif	Trading	Positif	Hold	4,800	4,770	4,740	4,830	4,860	4,670
WIKA	Positif	Strong Buy	Negatif	Buy	670	655	635	690	705	625

## OUR TEAM

**Sukarno Alatas**

Head of Equity Research

[sukarno@kiwoom.co.id](mailto:sukarno@kiwoom.co.id) | 021 5010 5800**Michelle Abadi**

Associate

[michelle@kiwoom.co.id](mailto:michelle@kiwoom.co.id) | 021 5010 5800**Abdul Azis Setyo Wibowo**

Equity Research Analyst

[azis@kiwoom.co.id](mailto:azis@kiwoom.co.id) | 021 5010 5800**Rizky Khaerunnisa**

Equity Research Analyst

[rizky@kiwoom.co.id](mailto:rizky@kiwoom.co.id) | 021 5010 5800**OTHER DISCLOSURES**

All Kiwoom's research reports made available to clients are simultaneously available on our own website <http://www.kiwoom.co.id/>. Not all research content is redistributed, e-mailed or made available to third-party aggregators. For all research reports available on a particular stock, please contact your sales representative. Any data discrepancies in this report could be the result of different calculations and/or adjustments.

**DISCLAIMER** This report has been prepared and issued by PT Kiwoom Sekuritas Indonesia. Information has been obtained from sources believed to be reliable but Kiwoom Securities do not warrant its completeness or accuracy. Forward-looking information or statements in this report contain information that is based on forecast of future results, estimates of amounts not yet determinable, assumptions, and therefore involve known and unknown risks and uncertainties which may cause the actual results, performance or achievements of their subject matter to be materially different from current expectations.

To the fullest extent allowed by law, PT Kiwoom Sekuritas Indonesia shall not be liable for any direct, indirect or consequential losses, loss of profits, damages, costs or expenses incurred or suffered by any person or organization arising from reliance on or use of any information contained on this report. The information that we provide should not be construed in any manner whatsoever as, personalized advice.

No mention of a particular security in this report constitutes a recommendation to buy, sell or hold that or any security, or that any particular security, portfolio of securities, transaction or investment strategy is suitable for any specific person. This report is being supplied to you solely for your information and may not be reproduced by, further distributed to or published in whole or in part by, any other person.