

JCI Range Today 6,801 – 6,819 (Support), 6,906 – 6,933 (Resistance)

Jakarta Stock Exchange Composite Index, Indonesia, Jakarta:JKSE, D

EMA (34, close, 0)
EMA (13, close, 0)

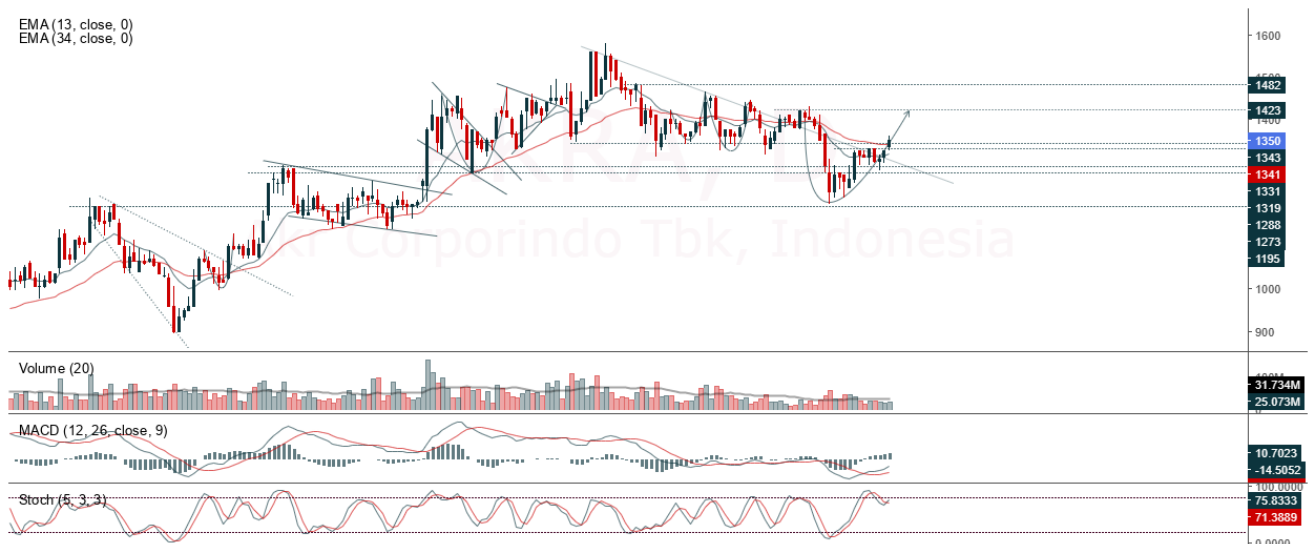


JCI closed slightly lower. The stochastic indicator is in the overbought area, MACD histogram is moving positive (golden cross line) and volume is increasing. If JCI is able to move bullish, there is a chance for JCI to go to the resistance at the range of 6,906 – 6,933. If it moves bearish, JCI is expected to weaken again to the support at the range of 6,801 – 6,819.

AKRA

Akr Corporindo Tbk, Indonesia, Jakarta:AKRA, D

EMA (13, close, 0)
EMA (34, close, 0)



(AKRA) The price closed higher with a bullish candle. The price has the opportunity to strengthen again to the nearest resistance. Stochastic indicator is bullish, MACD histogram is moving positive (bullish line) and volume is increasing. Confirmation to buy if the next candle is bullish again or buy on support if it goes down first. We suggest being careful if it fails to stay above the support level. **(Trading Buy)**

TRADING STRATEGY:

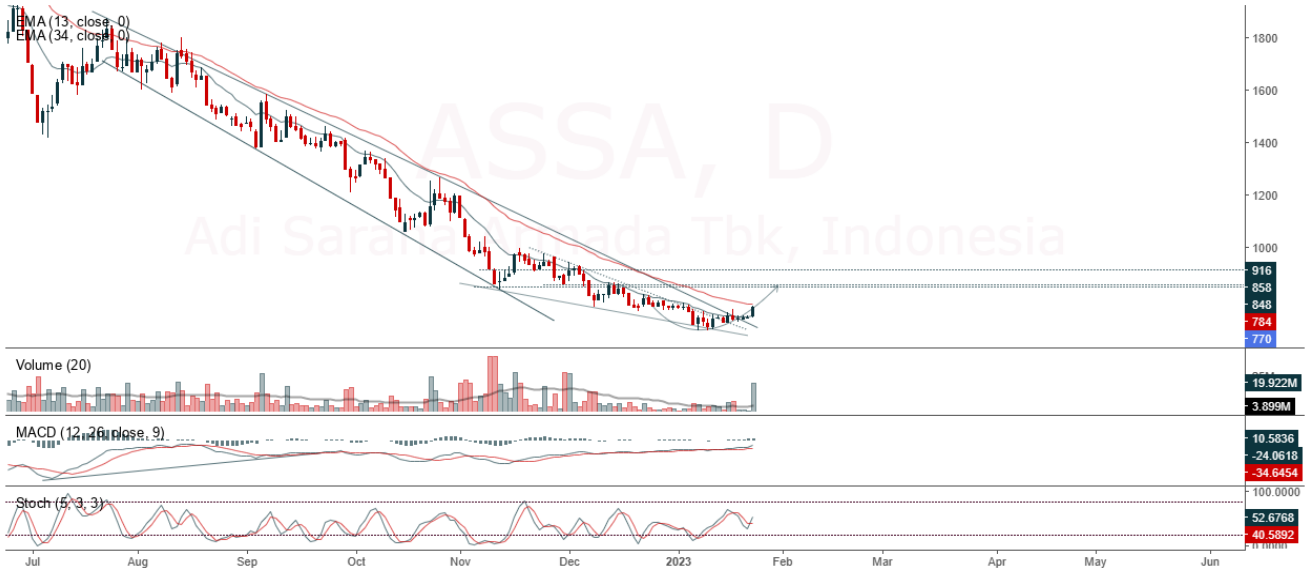
1. Target Price: The price has a bullish opportunity to test the resistance level 1,375. If it breaks level 1,375 then the price will go to level 1,390. We recommend to be careful if the price fails to break through or turn around the support area.

2. Stop Loss: To minimize the risk of loss, we recommend placing a stop loss at level 1,310.

Entry Buy : 1,330 – 1,350
Target Price : 1,375 – 1,390
Support : 1,315 – 1,330
Cutloss : 1,310

ASSA

Adi Sarana Armada Tbk, Indonesia, Jakarta:ASSA, D



(ASSA) The price closed higher with a bullish candle. The price has the opportunity to strengthen again to the nearest resistance. Stochastic indicator is bullish, MACD histogram is moving positive (bullish line) and volume has increased significantly. Confirmation to buy if the next candle is bullish again or buy on support if it goes down first. We suggest being careful if it fails to stay above the support level. **(Trading Buy)**

TRADING STRATEGY:

1. Target Price: The price has a bullish opportunity to test the resistance level 790. If it breaks level 790 then the price will go to level 810. We recommend to be careful if the price fails to break through or turn around the support area.

2. Stop Loss: To minimize the risk of loss, we recommend placing a stop loss at level 735.

Entry Buy : 750 – 770
 Target Price : 790 – 810
 Support : 740 – 750
 Cutloss : 735

BTPS

Bank Tabungan Pensiunan Nasional Syariah PT, Indonesia, Jakarta:BTPS, D

EMA
EMA



(BTPS) The price closed higher with a bullish candle. The price has the opportunity to strengthen again to the nearest resistance. Stochastic golden cross indicator, MACD histogram is moving positive (golden cross line) and neutral volume. Confirmation to buy if the next candle is bullish again or buy on support if it goes down first. We suggest being careful if it fails to stay above the support level. **(Trading Buy)**

TRADING STRATEGY:

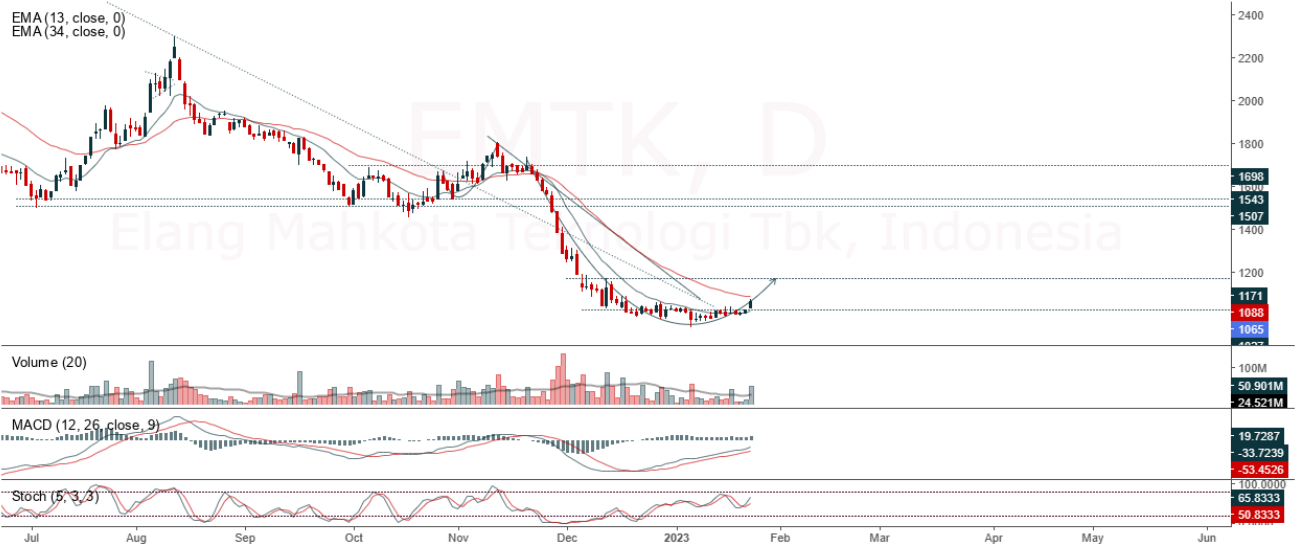
1.Target Price: The price has a bullish opportunity to test the resistance level 2,670. If it breaks level 2,670 then the price will go to level 2,710. We recommend to be careful if the price fails to break through or turn around the support area.

2. Stop Loss: To minimize the risk of loss, we recommend placing a stop loss at level 2,530.

- Entry Buy : 2,570 – 2,610
- Target Price : 2,670 – 2,710
- Support : 2,540 – 2,570
- Cutloss : 2,530

EMTK

Elang Mahkota Teknologi Tbk, Indonesia, Jakarta:EMTK, D



(EMTK) The price closed higher and broke up to the resistance. The price has the opportunity to strengthen again to the nearest resistance. Stochastic indicator is bullish, MACD histogram is moving positive (bullish line) and volume is increasing. Confirmation to buy if the next candle is bullish again or buy on support if it goes down first. We suggest being careful if it fails to stay above the support level. **(Trading Buy)**

TRADING STRATEGY:

1. Target Price: The price has a bullish opportunity to test the resistance level 1,090. If it breaks level 1,090 then the price will go to level 1,105. We recommend to be careful if the price fails to break through or turn around the support area.

2. Stop Loss: To minimize the risk of loss, we recommend placing a stop loss at level 1,020.

- Entry Buy : 1,040 – 1,065
- Target Price : 1,090 – 1,105
- Support : 1,025 – 1,040
- Cutloss : 1,020

Forecast – Technical Analysis

Ticker	MAS	RSI Rec	MACD Trend	Recomm.	Pivot Point	Support		Resistance		Stop Loss Level
						1	2	1	2	
JCI	Negatif	Trading	Positif	Hold	6,875	6,825	6,800	6,900	6,925	6,700
ADRO	Negatif	Trading	Positif	Hold	3,215	3,180	3,135	3,260	3,295	3,090
AMRT	Negatif	Trading	Positif	Hold	2,705	2,665	2,625	2,745	2,785	2,585
ANTM	Negatif	OverBought	Positif	Sell	2,320	2,285	2,250	2,355	2,390	2,215
ARTO	Negatif	Trading	Positif	Hold	3,235	3,075	2,945	3,365	3,525	2,900
ASII	Negatif	OverBought	Positif	Sell	5,900	5,875	5,800	5,975	6,000	5,725
BBCA	Negatif	Trading	Positif	Hold	8,275	8,200	8,150	8,325	8,400	8,025
BBNI	Negatif	Trading	Positif	Hold	9,075	8,975	8,900	9,150	9,250	8,750
BBRI	Negatif	Trading	Positif	Hold	4,640	4,595	4,550	4,685	4,730	4,480
BBTN	Negatif	Trading	Positif	Hold	1,330	1,310	1,295	1,345	1,365	1,275
BFIN	Negatif	OverBought	Positif	Sell	1,140	1,130	1,115	1,155	1,165	1,095
BMRI	Negatif	Trading	Positif	Hold	9,875	9,800	9,700	9,975	10,050	9,550
BRIS	Negatif	OverBought	Positif	Sell	1,375	1,360	1,335	1,400	1,415	1,315
BRPT	Positif	Trading	Positif	Spec. Buy	835	830	825	840	845	810
BUKA	Negatif	Trading	Positif	Hold	271	264	257	278	285	253
CPIN	Positif	Trading	Negatif	Hold	5,925	5,875	5,750	6,050	6,100	5,675
EMTK	Negatif	Trading	Positif	Hold	1,050	1,030	1,005	1,075	1,095	990
ERAA	Negatif	Trading	Positif	Hold	419	416	413	422	425	407
EXCL	Negatif	OverBought	Positif	Sell	2,355	2,330	2,295	2,390	2,415	2,260
GOTO	Negatif	Trading	Positif	Hold	117	114	110	121	124	108
HMSP	Negatif	Oversold	Positif	Spec. Buy	845	820	800	865	890	790
HRUM	Negatif	OverBought	Positif	Sell	1,740	1,705	1,680	1,765	1,800	1,655
ICBP	Negatif	OverBought	Positif	Sell	10,400	10,350	10,200	10,550	10,600	10,050
INCO	Negatif	Trading	Positif	Hold	7,475	7,400	7,300	7,575	7,650	7,200
INDF	Negatif	Trading	Positif	Hold	6,900	6,850	6,800	6,950	7,000	6,675
INDY	Negatif	Trading	Positif	Hold	2,610	2,585	2,570	2,625	2,650	2,530
INKP	Negatif	Trading	Positif	Hold	8,850	8,750	8,650	8,950	9,050	8,500
INTP	Positif	Trading	Negatif	Hold	9,825	9,725	9,675	9,875	9,975	9,525
ITMG	Negatif	Trading	Positif	Hold	37,700	37,375	36,950	38,125	38,450	36,400
JPFA	Positif	Trading	Negatif	Hold	1,315	1,305	1,300	1,320	1,330	1,280
KLBF	Negatif	Trading	Positif	Hold	2,055	2,025	2,005	2,075	2,105	1,970
MDKA	Negatif	OverBought	Positif	Sell	4,905	4,860	4,795	4,970	5,025	4,725
MEDC	Negatif	OverBought	Positif	Sell	1,365	1,300	1,245	1,420	1,485	1,225
MIKA	Negatif	Trading	Positif	Hold	3,115	3,065	3,005	3,175	3,225	2,955
MNCN	Negatif	Oversold	Negatif	Specu. Buy	680	670	670	680	690	655
PGAS	Negatif	Trading	Positif	Hold	1,615	1,585	1,550	1,650	1,680	1,530
PTBA	Negatif	Trading	Positif	Hold	3,545	3,525	3,495	3,575	3,595	3,440
SMGR	Positif	Trading	Positif	Spec. Buy	7,125	7,050	7,000	7,175	7,250	6,875
TBIG	Negatif	Trading	Negatif	Sell	2,190	2,160	2,140	2,210	2,240	2,110
TINS	Negatif	OverBought	Positif	Sell	1,285	1,270	1,260	1,295	1,310	1,240
TLKM	Negatif	Trading	Positif	Hold	3,875	3,840	3,815	3,900	3,935	3,760
TOWR	Positif	Trading	Positif	Spec. Buy	1,125	1,110	1,090	1,145	1,160	1,070
TPIA	Negatif	Trading	Negatif	Sell	2,350	2,330	2,310	2,370	2,390	2,275
UNTR	Negatif	Trading	Positif	Hold	26,475	26,000	25,575	26,900	27,375	25,175
UNVR	Negatif	Trading	Positif	Hold	4,820	4,790	4,760	4,850	4,880	4,690
WIKA	Positif	Oversold	Negatif	Spec. Buy	670	660	645	685	695	635

OUR TEAM

Sukarno Alatas

Head of Equity Research

sukarno@kiwoom.co.id | 021 5010 5800

Michelle Abadi

Associate

michelle@kiwoom.co.id | 021 5010 5800

Abdul Azis Setyo Wibowo

Equity Research Analyst

azis@kiwoom.co.id | 021 5010 5800

Rizky Khaerunnisa

Equity Research Analyst

rizky@kiwoom.co.id | 021 5010 5800



OTHER DISCLOSURES

All Kiwoom's research reports made available to clients are simultaneously available on our own website <http://www.kiwoom.co.id/>. Not all research content is redistributed, e-mailed or made available to third-party aggregators. For all research reports available on a particular stock, please contact your sales representative. Any data discrepancies in this report could be the result of different calculations and/or adjustments.

DISCLAIMER This report has been prepared and issued by PT Kiwoom Sekuritas Indonesia. Information has been obtained from sources believed to be reliable but Kiwoom Securities do not warrant its completeness or accuracy. Forward-looking information or statements in this report contain information that is based on forecast of future results, estimates of amounts not yet determinable, assumptions, and therefore involve known and unknown risks and uncertainties which may cause the actual results, performance or achievements of their subject matter to be materially different from current expectations.

To the fullest extent allowed by law, PT Kiwoom Sekuritas Indonesia shall not be liable for any direct, indirect or consequential losses, loss of profits, damages, costs or expenses incurred or suffered by any person or organization arising from reliance on or use of any information contained on this report. The information that we provide should not be construed in any manner whatsoever as, personalized advice.

No mention of a particular security in this report constitutes a recommendation to buy, sell or hold that or any security, or that any particular security, portfolio of securities, transaction or investment strategy is suitable for any specific person. This report is being supplied to you solely for your information and may not be reproduced by, further distributed to or published in whole or in part by, any other person.