

JCI Range Today 6,754 – 6,786 (Support), 6,871 – 6,888 (Resistance)

Jakarta Stock Exchange Composite Index, Indonesia, Jakarta:JKSE, D

EMA (34, close, 0)
EMA (13, close, 0)



JCI closed lower and formed a swing high. Stochastic indicator dead cross, MACD histogram is moving positive but down (bullish line) and volume is decreasing. If it moves bearish, JCI is expected to continue weakening to the support at the range of 6,754 – 6,786. If JCI is able to move bullish, there is a chance for JCI to go to the resistance at the range of 6,871 – 6,888.

DSNG

Dharma Satya Nusantara Tbk, Indonesia, Jakarta:DSNG, D



(DSNG) The price closed higher with a bullish candle. The price has the opportunity to strengthen again to the next resistance if it manages to break. Stochastic indicator is bullish, MACD histogram is moving positive (bullish line) and volume is increasing. Confirmation to buy if the next candle is bullish again (buy on break at level of 665) or buy on support if it goes down first. We suggest being careful if it fails to stay above the support level. **(Buy on break)**

TRADING STRATEGY:

1. Target Price: The price has a bullish opportunity to test the resistance level 680. If it breaks level 680 then the price will go to level 690. We recommend to be careful if the price fails to break through or turn around the support area.

2. Stop Loss: To minimize the risk of loss, we recommend placing a stop loss at level 640.

Entry Buy : 655 – 665
Target Price : 680 – 690
Support : 645 – 655
Cutloss : 640

PNIN

Paninvest Tbk, Indonesia, Jakarta:PNIN, D

EMA (13, close, 0)
EMA (34, close, 0)



(PNIN) The price closed higher with a bullish candle. The price has the opportunity to strengthen again to the next resistance. Stochastic indicator is bullish, MACD histogram is moving positive (bullish line) and volume has increased significantly. Confirmation to buy if the next candle is bullish again or buy on support if it goes down first. We suggest being careful if it fails to stay above the support level. **(Trading Buy)**

TRADING STRATEGY:

1. Target Price: The price has a bullish opportunity to test the resistance level 1,420. If it breaks level 1,420 then the price will go to level 1,480. We recommend to be careful if the price fails to break through or turn around the support area.

2. Stop Loss: To minimize the risk of loss, we recommend placing a stop loss at level 1,295.

- Entry Buy : 1,345 – 1,375
- Target Price : 1,420 – 1,480
- Support : 1,300 – 1,345
- Cutloss : 1,295

SCMA

Surya Citra Media Tbk, Indonesia, Jakarta:SCMA, D



(SCMA) The prices closed higher with a bullish candle. The price has the opportunity to strengthen again to the nearest resistance. Stochastic indicator is bullish, MACD histogram is moving positive (bullish line) and volume is increasing. Confirmation to buy if the next candle is bullish again or buy on support if it goes down first. We suggest being careful if it fails to stay above the support level. **(Trading Buy)**

TRADING STRATEGY:

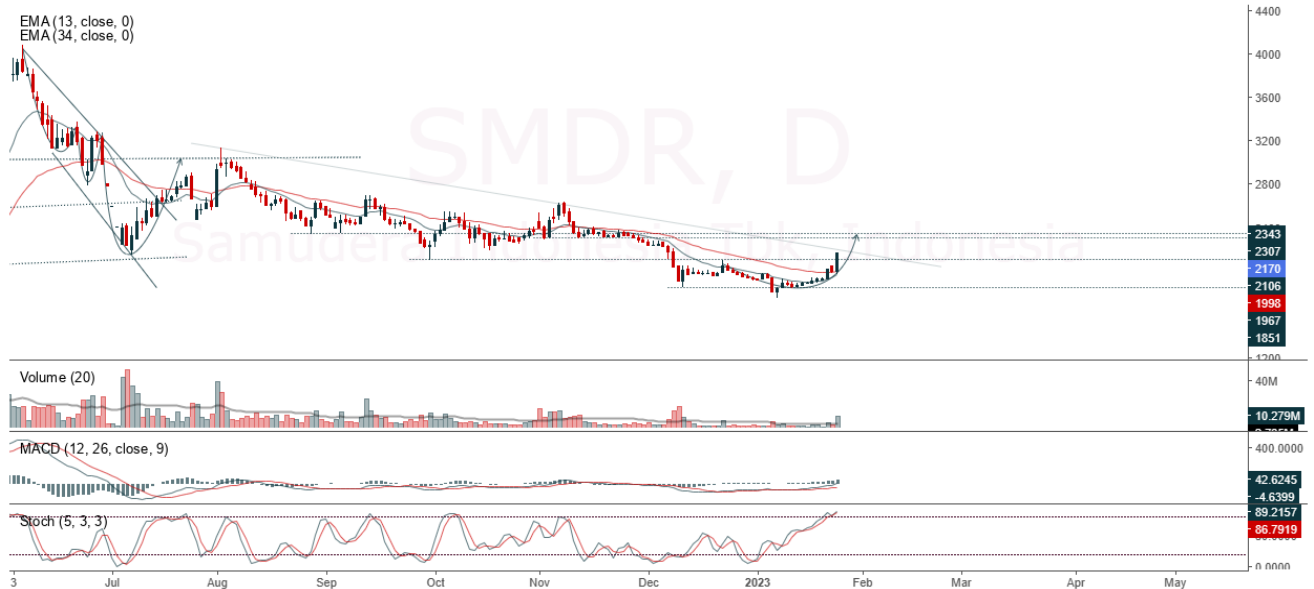
1.Target Price: The price has a bullish opportunity to test the resistance level 226. If it breaks level 226 then the price will go to level 230. We recommend to be careful if the price fails to break through or turn around the support area.

2. Stop Loss: To minimize the risk of loss, we recommend placing a stop loss at level 212.

Entry Buy : 216 – 220
Target Price : 226 – 230
Support : 214 – 216
Cutloss : 212

SMDR

Samudera Indonesia Tbk, Indonesia, Jakarta:SMDR, D



(SMDR) The price closed higher and broke up to the resistance. The price has the opportunity to strengthen again to the next resistance. Stochastic indicator is bullish, MACD histogram is moving positive (bullish line) and volume is increasing. Confirmation to buy if the next candle is bullish again or buy on support if it goes down first. We suggest being careful if it fails to stay above the support level. **(Trading Buy)**

TRADING STRATEGY:

1.Target Price: The price has a bullish opportunity to test the resistance level 2,240. If it breaks level 2,240 then the price will go to level 2,310. We recommend to be careful if the price fails to break through or turn around the support area.

2. Stop Loss: To minimize the risk of loss, we recommend placing a stop loss at level 1,020.

Entry Buy : 2,110 – 2,170
 Target Price : 2,240 – 2,310
 Support : 2,100 – 2,110
 Cutloss : 2,090


Forecast – Technical Analysis

Ticker	MA5	RSI Rec	MACD Trend	Recomm.	Pivot Point	Support		Resistance		Stop Loss Level
						1	2	1	2	
JCI	Negatif	Trading	Positif	Hold	6,850	6,825	6,800	6,875	6,900	6,700
ADRO	Negatif	Oversold	Positif	Spec. Buy	3,160	3,125	3,090	3,195	3,230	3,040
AMRT	Positif	Trading	Negatif	Hold	2,665	2,635	2,605	2,695	2,725	2,565
ANTM	Negatif	OverBought	Positif	Sell	2,310	2,265	2,210	2,365	2,410	2,175
ARTO	Negatif	Trading	Positif	Hold	3,335	3,130	2,945	3,520	3,725	2,900
ASII	Negatif	OverBought	Positif	Sell	5,925	5,875	5,825	5,975	6,025	5,725
BBCA	Positif	Trading	Positif	Spec. Buy	8,250	8,200	8,150	8,300	8,350	8,025
BBNI	Negatif	Trading	Positif	Hold	9,150	9,050	8,950	9,250	9,350	8,800
BBRI	Negatif	Trading	Positif	Hold	4,590	4,555	4,520	4,625	4,660	4,450
BBTN	Negatif	Trading	Positif	Hold	1,365	1,340	1,315	1,390	1,415	1,295
BFIN	Negatif	OverBought	Positif	Sell	1,140	1,125	1,110	1,155	1,170	1,095
BMRI	Negatif	Trading	Positif	Hold	9,775	9,675	9,625	9,825	9,925	9,475
BRIS	Negatif	Trading	Positif	Hold	1,375	1,365	1,350	1,390	1,400	1,330
BRPT	Negatif	Trading	Positif	Hold	835	830	815	850	855	805
BUKA	Negatif	Trading	Positif	Hold	284	275	268	291	300	263
CPIN	Positif	Trading	Negatif	Hold	5,925	5,850	5,775	6,000	6,075	5,675
EMTK	Negatif	Trading	Positif	Hold	1,075	1,055	1,020	1,110	1,130	1,005
ERAA	Positif	Trading	Positif	Spec. Buy	417	413	409	421	425	402
EXCL	Negatif	OverBought	Positif	Sell	2,345	2,320	2,295	2,370	2,395	2,260
GOTO	Negatif	OverBought	Positif	Sell	118	115	111	122	125	109
HMSP	Negatif	Trading	Positif	Hold	885	860	835	910	935	820
HRUM	Negatif	Trading	Positif	Hold	1,725	1,710	1,695	1,740	1,755	1,670
ICBP	Negatif	Trading	Positif	Hold	10,400	10,350	10,250	10,500	10,550	10,100
INCO	Positif	Trading	Positif	Spec. Buy	7,375	7,275	7,150	7,500	7,600	7,025
INDF	Negatif	Trading	Positif	Hold	6,875	6,800	6,725	6,950	7,025	6,625
INDY	Negatif	Trading	Positif	Hold	2,560	2,530	2,500	2,590	2,620	2,465
INKP	Negatif	Trading	Positif	Hold	8,775	8,725	8,650	8,850	8,900	8,525
INTP	Positif	Trading	Negatif	Hold	9,825	9,750	9,675	9,900	9,975	9,525
ITMG	Negatif	Trading	Positif	Hold	37,025	36,525	36,050	37,500	38,000	35,500
JPFA	Positif	Trading	Negatif	Hold	1,315	1,310	1,300	1,325	1,330	1,280
KLBF	Negatif	Trading	Positif	Hold	2,055	2,030	2,005	2,080	2,105	1,975
MDKA	Positif	OverBought	Positif	Hold	4,860	4,770	4,670	4,960	5,050	4,600
MEDC	Negatif	OverBought	Positif	Sell	1,385	1,355	1,315	1,425	1,455	1,295
MIKA	Negatif	Trading	Positif	Hold	3,065	3,010	2,945	3,130	3,185	2,900
MNCN	Positif	Oversold	Negatif	Spec. Buy	685	670	660	695	710	650
PGAS	Negatif	Trading	Positif	Hold	1,590	1,575	1,560	1,605	1,620	1,535
PTBA	Negatif	Trading	Positif	Hold	3,510	3,480	3,450	3,540	3,570	3,400
SMGR	Positif	Trading	Positif	Spec. Buy	7,100	7,050	6,975	7,175	7,225	6,875
TBIG	Negatif	Trading	Positif	Hold	2,170	2,135	2,100	2,205	2,240	2,065
TINS	Positif	OverBought	Positif	Hold	1,275	1,260	1,235	1,300	1,315	1,215
TLKM	Positif	Trading	Positif	Spec. Buy	3,845	3,810	3,775	3,880	3,915	3,720
TOWR	Positif	Trading	Negatif	Hold	1,115	1,100	1,085	1,130	1,145	1,070
TPIA	Positif	Trading	Negatif	Hold	2,355	2,340	2,325	2,370	2,385	2,290
UNTR	Negatif	Trading	Positif	Hold	26,000	25,900	25,600	26,300	26,400	25,225
UNVR	Negatif	Trading	Positif	Hold	4,840	4,815	4,790	4,865	4,890	4,715
WIKA	Positif	Oversold	Negatif	Spec. Buy	680	655	640	695	720	630

OUR TEAM

Sukarno Alatas

Head of Equity Research

sukarno@kiwoom.co.id | 021 5010 5800**Michelle Abadi**

Associate

michelle@kiwoom.co.id | 021 5010 5800**Abdul Azis Setyo Wibowo**

Equity Research Analyst

azis@kiwoom.co.id | 021 5010 5800**Rizky Khaerunnisa**

Equity Research Analyst

rizky@kiwoom.co.id | 021 5010 5800**OTHER DISCLOSURES**

All Kiwoom's research reports made available to clients are simultaneously available on our own website <http://www.kiwoom.co.id/>. Not all research content is redistributed, e-mailed or made available to third-party aggregators. For all research reports available on a particular stock, please contact your sales representative. Any data discrepancies in this report could be the result of different calculations and/or adjustments.

DISCLAIMER This report has been prepared and issued by PT Kiwoom Sekuritas Indonesia. Information has been obtained from sources believed to be reliable but Kiwoom Securities do not warrant its completeness or accuracy. Forward-looking information or statements in this report contain information that is based on forecast of future results, estimates of amounts not yet determinable, assumptions, and therefore involve known and unknown risks and uncertainties which may cause the actual results, performance or achievements of their subject matter to be materially different from current expectations.

To the fullest extent allowed by law, PT Kiwoom Sekuritas Indonesia shall not be liable for any direct, indirect or consequential losses, loss of profits, damages, costs or expenses incurred or suffered by any person or organization arising from reliance on or use of any information contained on this report. The information that we provide should not be construed in any manner whatsoever as, personalized advice.

No mention of a particular security in this report constitutes a recommendation to buy, sell or hold that or any security, or that any particular security, portfolio of securities, transaction or investment strategy is suitable for any specific person. This report is being supplied to you solely for your information and may not be reproduced by, further distributed to or published in whole or in part by, any other person.