

JCI Range Today 6,765 – 6,790 (Support), 6,871 – 6,888 (Resistance)

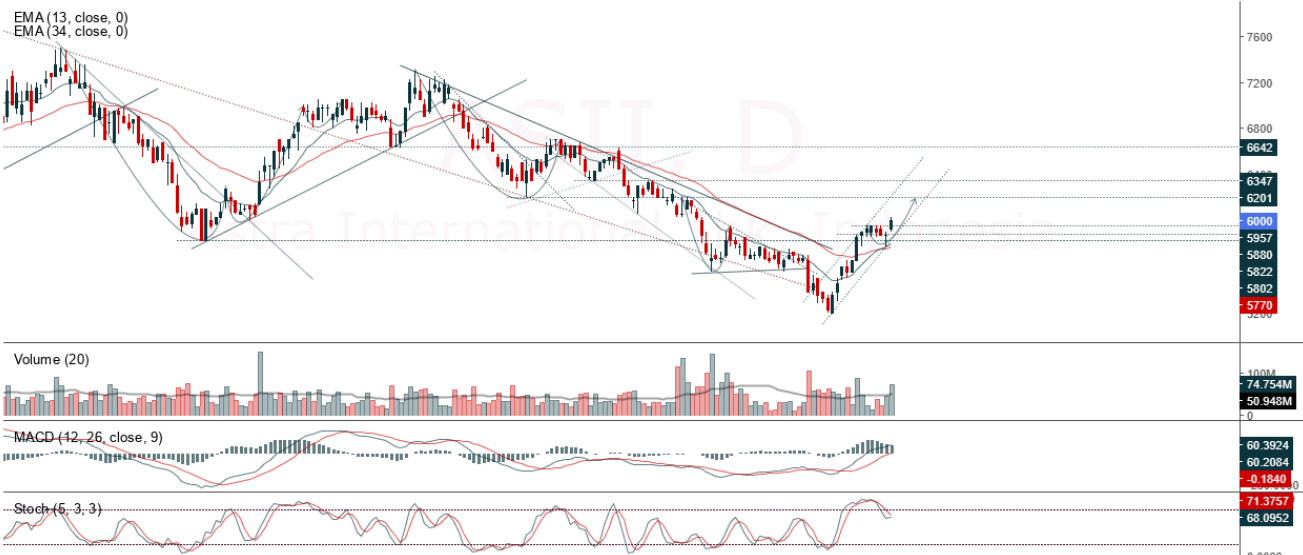
Jakarta Stock Exchange Composite Index, Indonesia, Jakarta:JKSE, D



JCI closed lower with a bearish candle. Stochastic indicator is bearish, MACD histogram is moving positive but down (bullish line) and volume is increasing. If JCI is able to move bullish, there is a chance for JCI to go to the resistance at the range of 6,871 – 6,888. If it moves bearish and breaks down below 6,834, JCI is expected to continue weakening to the support at the range of 6,765 – 6,790.

ASII

Astra International Tbk, Indonesia, Jakarta:ASII, D



(ASII) The price closed higher with a bullish candle. The price has the opportunity to strengthen again to the nearest resistance. The stochastic indicator is back to the golden cross, MACD histogram is moving positive (bullish line) and volume is increasing. Confirmation to buy if the next candle is bullish again or buy on support if it goes down first. We suggest being careful if it fails to stay above the support level. **(Trading Buy)**

TRADING STRATEGY:

1. Target Price: The price has a bullish opportunity to test the resistance level 6,100. If it breaks level 6,100 then the price will go to level 6,175. We recommend to be careful if the price fails to break through or turn around the support area.

2. Stop Loss: To minimize the risk of loss, we recommend placing a stop loss at level 5,825.

Entry Buy : 5,900 – 6,000
Target Price : 6,100 – 6,175
Support : 5,850 – 5,900
Cutloss : 5,825

GZCO

Gozco Plantations Tbk, Indonesia, Jakarta:GZCO, D

EMA (13, close, 0)
EMA (34, close, 0)



(GZCO) The price closed higher and broke out to the resistance. The price has the opportunity to strengthen again to the next resistance. Stochastic golden cross indicator, MACD histogram is moving positive (bullish line) and volume is increasing. Confirmation to buy if the next candle is bullish again or buy on support if it goes down first. We suggest being careful if it fails to stay above the support level. **(Trading Buy)**

TRADING STRATEGY:

1.Target Price: The price has a bullish opportunity to test the resistance level 133. If it breaks level 133 then the price will go to level 138. We recommend to be careful if the price fails to break through or turn around the support area.

2. Stop Loss: To minimize the risk of loss, we recommend placing a stop loss at level 115.

Entry Buy : 121 – 124
Target Price : 133 – 138
Support : 116 – 121
Cutloss : 115

INCO

Vale Indonesia Tbk, Indonesia, Jakarta:INCO, D

EMA (13, close, 0)
EMA (34, close, 0)



(INCO) The price closed higher with a bullish candle. The price has the opportunity to strengthen again to the nearest resistance. The stochastic indicator is still bullish, MACD histogram is moving in the positive direction (sloping line) and volume is increasing slightly. Confirmation to buy if the next candle is bullish again or buy on support if it goes down first. We suggest being careful if it fails to stay above the support level. **(Trading Buy)**

TRADING STRATEGY:

1. Target Price: The price has a bullish opportunity to test the resistance level 7,575. If it breaks level 7,575 then the price will go to level 7,650. We recommend to be careful if the price fails to break through or turn around the support area.

2. Stop Loss: To minimize the risk of loss, we recommend placing a stop loss at level 7,225.

Entry Buy : 7,300 – 7,375
Target Price : 7,575 – 7,650
Support : 7,250 – 7,300
Cutloss : 7,225

ISAT

Indosat Tbk, Indonesia, Jakarta:ISAT, D

EMA (13, close, 0)
EMA (34, close, 0)



(ISAT) The price closed higher with a bullish candle. The price has the opportunity to strengthen again to the nearest resistance. Stochastic indicator is bullish, MACD histogram is moving positive (bullish line) and volume is increasing. Confirmation to buy if the next candle is bullish again or buy on support if it goes down first. We suggest being careful if it fails to stay above the support level. **(Trading Buy)**

TRADING STRATEGY:

1. Target Price: The price has a bullish opportunity to test the resistance level 6,250. If it breaks level 6,250 then the price will go to level 6,300. We recommend to be careful if the price fails to break through or turn around the support area.

2. Stop Loss: To minimize the risk of loss, we recommend placing a stop loss at level 5,900.

- Entry Buy : 5,975 – 6,100
- Target Price : 6,250 – 6,300
- Support : 5,925 – 5,975
- Cutloss : 5,900

Forecast – Technical Analysis

Ticker	MA5	RSI Rec	MACD Trend	Recomm.	Pivot Point	Support		Resistance		Stop Loss Level
						1	2	1	2	
JCI	Negatif	Trading	Positif	Hold	6,850	6,825	6,800	6,875	6,900	6,700
ADRO	Positif	Oversold	Positif	Buy	2,975	2,925	2,895	3,005	3,055	2,850
AMRT	Negatif	Trading	Positif	Hold	2,820	2,780	2,710	2,890	2,930	2,670
ANTM	Positif	OverBought	Positif	Hold	2,310	2,280	2,260	2,330	2,360	2,225
ARTO	Negatif	Trading	Positif	Hold	3,215	3,170	3,105	3,280	3,325	3,060
ASII	Positif	Trading	Positif	Spec. Buy	5,975	5,900	5,850	6,025	6,100	5,750
BBCA	Negatif	OverBought	Positif	Sell	8,575	8,450	8,375	8,650	8,775	8,225
BBNI	Negatif	Trading	Positif	Hold	9,175	9,075	8,950	9,300	9,400	8,825
BBRI	Positif	Trading	Positif	Spec. Buy	4,595	4,570	4,545	4,620	4,645	4,475
BBTN	Negatif	Trading	Positif	Hold	1,375	1,355	1,345	1,385	1,405	1,320
BFIN	Positif	Trading	Negatif	Hold	1,125	1,085	1,045	1,165	1,205	1,030
BMRI	Positif	Trading	Positif	Spec. Buy	10,000	9,875	9,775	10,100	10,225	9,625
BRIS	Negatif	Trading	Positif	Hold	1,365	1,330	1,300	1,395	1,430	1,280
BRPT	Negatif	OverBought	Positif	Sell	840	825	815	850	865	800
BUKA	Negatif	OverBought	Positif	Sell	292	289	286	295	298	281
CPIN	Positif	Trading	Negatif	Hold	5,825	5,775	5,675	5,925	5,975	5,600
EMTK	Negatif	Trading	Positif	Hold	1,070	1,050	1,035	1,085	1,105	1,020
ERAA	Positif	Trading	Positif	Spec. Buy	418	413	410	421	426	403
EXCL	Positif	Trading	Negatif	Hold	2,280	2,225	2,190	2,315	2,370	2,155
GOTO	Positif	Trading	Positif	Spec. Buy	111	110	107	114	115	106
HMSP	Negatif	OverBought	Positif	Sell	960	935	915	980	1,005	900
HRUM	Positif	Trading	Positif	Spec. Buy	1,715	1,685	1,655	1,745	1,775	1,630
ICBP	Positif	Trading	Negatif	Hold	10,150	9,925	9,800	10,275	10,500	9,650
INCO	Positif	Trading	Negatif	Hold	7,375	7,300	7,175	7,500	7,575	7,050
INDF	Positif	Trading	Negatif	Hold	6,750	6,675	6,550	6,875	6,950	6,450
INDY	Positif	Oversold	Positif	Buy	2,425	2,355	2,325	2,455	2,525	2,290
INKP	Positif	Oversold	Positif	Buy	8,425	8,300	8,200	8,525	8,650	8,075
INTP	Negatif	Trading	Negatif	Sell	9,925	9,800	9,700	10,025	10,150	9,550
ITMG	Positif	Trading	Positif	Spec. Buy	35,800	35,375	34,850	36,325	36,750	34,325
JPFA	Negatif	Trading	Positif	Hold	1,355	1,330	1,315	1,370	1,395	1,295
KLBF	Negatif	OverBought	Positif	Sell	2,105	2,050	1,995	2,160	2,215	1,965
MDKA	Positif	Trading	Positif	Spec. Buy	4,705	4,630	4,575	4,760	4,835	4,505
MEDC	Positif	OverBought	Positif	Hold	1,370	1,345	1,300	1,415	1,440	1,280
MIKA	Positif	Trading	Negatif	Hold	2,960	2,925	2,870	3,015	3,050	2,825
MNCN	Negatif	Trading	Positif	Hold	695	690	680	705	710	670
PGAS	Positif	Oversold	Positif	Buy	1,560	1,540	1,525	1,575	1,595	1,500
PTBA	Positif	Trading	Positif	Spec. Buy	3,425	3,370	3,345	3,450	3,505	3,295
SMGR	Negatif	Trading	Positif	Hold	7,325	7,225	7,150	7,400	7,500	7,025
TBIG	Positif	Oversold	Negatif	Spec. Buy	2,095	2,070	2,055	2,110	2,135	2,025
TINS	Positif	Trading	Positif	Spec. Buy	1,265	1,245	1,230	1,280	1,300	1,210
TLKM	Negatif	Trading	Positif	Hold	3,900	3,845	3,800	3,945	4,000	3,740
TOWR	Negatif	Trading	Negatif	Sell	1,125	1,115	1,105	1,135	1,145	1,085
TPIA	Positif	Trading	Negatif	Hold	2,325	2,310	2,295	2,340	2,355	2,260
UNTR	Positif	Trading	Positif	Spec. Buy	24,925	24,475	24,125	25,275	25,725	23,750
UNVR	Positif	Trading	Negatif	Hold	4,710	4,660	4,610	4,760	4,810	4,540
WIKA	Negatif	Oversold	Positif	Spec. Buy	695	675	665	705	725	655

OUR TEAM

Sukarno Alatas

Head of Equity Research

sukarno@kiwoom.co.id | 021 5010 5800**Michelle Abadi**

Associate

michelle@kiwoom.co.id | 021 5010 5800**Abdul Azis Setyo Wibowo**

Equity Research Analyst

azis@kiwoom.co.id | 021 5010 5800**Rizky Khaerunnisa**

Equity Research Analyst

rizky@kiwoom.co.id | 021 5010 5800**OTHER DISCLOSURES**

All Kiwoom's research reports made available to clients are simultaneously available on our own website <http://www.kiwoom.co.id/>. Not all research content is redistributed, e-mailed or made available to third-party aggregators. For all research reports available on a particular stock, please contact your sales representative. Any data discrepancies in this report could be the result of different calculations and/or adjustments.

DISCLAIMER This report has been prepared and issued by PT Kiwoom Sekuritas Indonesia. Information has been obtained from sources believed to be reliable but Kiwoom Securities do not warrant its completeness or accuracy. Forward-looking information or statements in this report contain information that is based on forecast of future results, estimates of amounts not yet determinable, assumptions, and therefore involve known and unknown risks and uncertainties which may cause the actual results, performance or achievements of their subject matter to be materially different from current expectations.

To the fullest extent allowed by law, PT Kiwoom Sekuritas Indonesia shall not be liable for any direct, indirect or consequential losses, loss of profits, damages, costs or expenses incurred or suffered by any person or organization arising from reliance on or use of any information contained on this report. The information that we provide should not be construed in any manner whatsoever as, personalized advice.

No mention of a particular security in this report constitutes a recommendation to buy, sell or hold that or any security, or that any particular security, portfolio of securities, transaction or investment strategy is suitable for any specific person. This report is being supplied to you solely for your information and may not be reproduced by, further distributed to or published in whole or in part by, any other person.