

**JCI Range Today 6,801 – 6,821 (Support), 6,893 – 6,906 (Resistance)**

Jakarta Stock Exchange Composite Index, Indonesia, Jakarta:JKSE, D

EMA (34, close, 0)  
EMA (13, close, 0)



JCI closed higher with a bullish candle. Stochastic indicator is bearish, MACD histogram is moving positive but down (bullish line) and volume is increasing. If JCI is able to move bullish, there is a chance for JCI to go to the resistance at the range of 6,893 – 6,906. If it moves bearish, JCI is expected to weaken to the support at the range of 6,801 – 6,821.

**AGII**

Aneka Gas Industri Tbk PT, Indonesia, Jakarta:AGII, D

EMA (13, close, 0)  
EMA (34, close, 0)



**(AGII)** The price closed higher with a bullish candle. The price has the opportunity to strengthen again to the nearest resistance. The stochastic indicator is back to the golden cross, MACD histogram is moving positive (bullish line) and volume is increasing. Confirmation to buy if the next candle is bullish again or buy on support if it goes down first. We suggest being careful if it fails to stay above the support level. **(Trading Buy)**

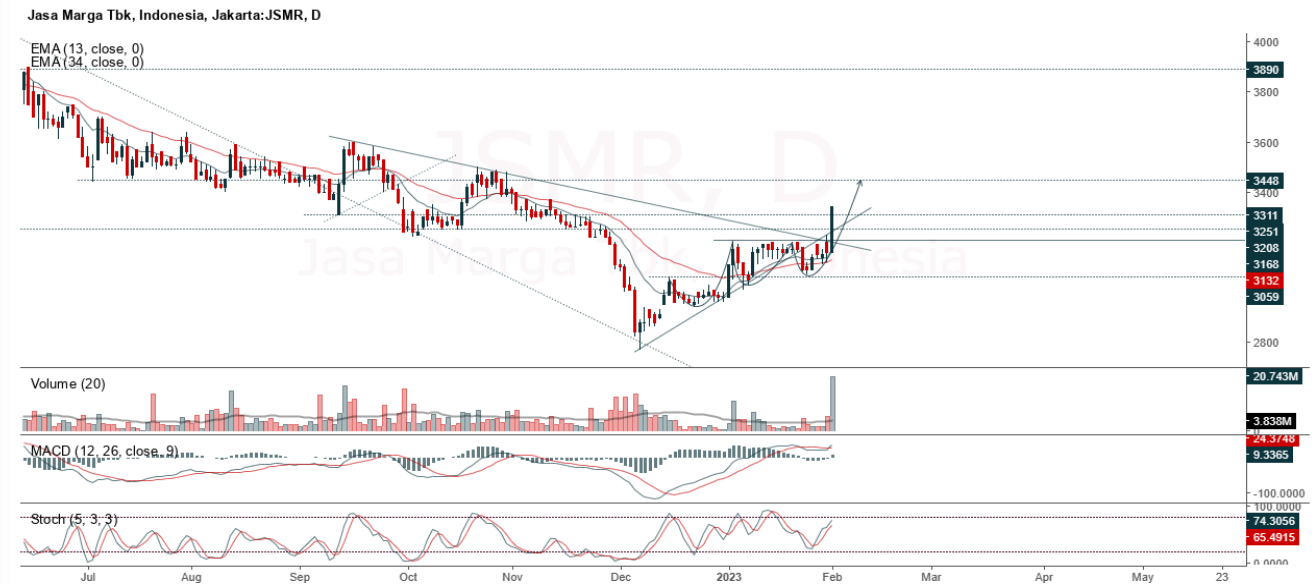
**TRADING STRATEGY:**

1. Target Price: The price has a bullish opportunity to test the resistance level 2,100. If it breaks level 2,100 then the price will go to level 2,150. We recommend to be careful if the price fails to break through or turn around the support area.

2. Stop Loss: To minimize the risk of loss, we recommend placing a stop loss at level 1,980.

Entry Buy : 2,010 – 2,040  
Target Price : 2,100 – 2,150  
Support : 1,985 – 2,010  
Cutloss : 1,980

**JSMR**



**(JSMR)** The price closed higher and broke up to the resistance. The price has the opportunity to strengthen again to the next resistance. Stochastic indicator is bullish, MACD histogram is moving positive (bullish line) and volume has increased significantly. Confirmation to buy if the next candle is bullish again or buy on support if it goes down first. We suggest being careful if it fails to stay above the support level. **(Trading Buy)**

**TRADING STRATEGY:**

1. Target Price: The price has a bullish opportunity to test the resistance level 3,420. If it breaks level 3,420 then the price will go to level 3,480. We recommend to be careful if the price fails to break through or turn around the support area.

2. Stop Loss: To minimize the risk of loss, we recommend placing a stop loss at level 3,220.

Entry Buy : 3,260 – 3,340  
 Target Price : 3,420 – 3,480  
 Support : 3,230 – 3,260  
 Cutloss : 3,220

**SCMA**

Surya Citra Media Tbk, Indonesia, Jakarta:SCMA, D



**(SCMA)** The price closed higher with a bullish candle. The price has the opportunity to strengthen again to the nearest resistance. The stochastic indicator is still bullish, MACD histogram is moving positive (bullish line) and volume is slightly decreasing. Confirmation to buy if the next candle is bullish again or buy on support if it goes down first. We suggest being careful if it fails to stay above the support level. **(Trading Buy)**

**TRADING STRATEGY:**

1. Target Price: The price has a bullish opportunity to test the resistance level 240. If it breaks level 240 then the price will go to level 244. We recommend to be careful if the price fails to break through or turn around the support area.

2. Stop Loss: To minimize the risk of loss, we recommend placing a stop loss at level 224.

Entry Buy : 230 – 234  
 Target Price : 240 – 244  
 Support : 226 – 230  
 Cutloss : 224

**SIDO**

Industri Jamu dan Farmasi Sido Muncul Tbk PT, Indonesia, Jakarta:SIDO, D



**(SIDO)** The price closed higher with a bullish candle. The price has the opportunity to strengthen again to the nearest resistance. Stochastic indicator is bullish, MACD histogram is moving positive (bullish line) and volume is neutral. Confirmation to buy if the next candle is bullish again or buy on support if it goes down first. We suggest being careful if it fails to stay above the support level. **(Trading Buy)**

**TRADING STRATEGY:**

- 1.Target Price: The price has a bullish opportunity to test the resistance level 795. If it breaks level 795 then the price will go to level 815. We recommend to be careful if the price fails to break through or turn around the support area.
2. Stop Loss: To minimize the risk of loss, we recommend placing a stop loss at level 755.

Entry Buy : 770 – 780  
 Target Price : 795 – 815  
 Support : 760 – 770  
 Cutloss : 755

**Forecast – Technical Analysis**

Ticker	MA5	RSI Rec	MACD Trend	Recomm.	Pivot Point	Support		Resistance		Stop Loss Level
						1	2	1	2	
JCI	Negatif	Trading	Positif	Hold	6,875	6,825	6,825	6,875	6,900	6,725
ADRO	Negatif	Trading	Positif	Hold	488	471	459	500	515	452
AMRT	Positif	Oversold	Negatif	Spec. Buy	2,955	2,910	2,885	2,980	3,025	2,840
ANTM	Negatif	Trading	Positif	Hold	1,350	1,310	1,275	1,385	1,425	1,255
ARTO	Negatif	Trading	Positif	Hold	2,940	2,725	2,580	3,085	3,300	2,540
ASII	Negatif	OverBought	Positif	Sell	2,355	2,320	2,285	2,390	2,425	2,250
BBCA	Positif	Trading	Positif	Spec. Buy	3,210	3,140	3,090	3,260	3,330	3,045
BBNI	Positif	OverBought	Positif	Hold	5,975	5,975	5,900	6,050	6,050	5,825
BBRI	Negatif	Trading	Positif	Hold	8,525	8,475	8,400	8,600	8,650	8,275
BBTN	Negatif	Trading	Positif	Hold	9,175	9,075	9,000	9,250	9,350	8,850
BFIN	Negatif	Trading	Positif	Hold	4,655	4,620	4,585	4,690	4,725	4,515
BMRI	Positif	Trading	Positif	Spec. Buy	1,370	1,350	1,345	1,375	1,395	1,320
BRIS	Negatif	Trading	Positif	Hold	9,850	9,650	9,475	10,025	10,225	9,325
BRPT	Positif	Trading	Negatif	Hold	1,350	1,330	1,325	1,355	1,375	1,305
BUKA	Positif	Trading	Negatif	Hold	825	820	810	835	840	800
CPIN	Negatif	OverBought	Positif	Sell	285	279	271	293	299	266
EMTK	Negatif	Trading	Negatif	Sell	5,825	5,800	5,700	5,925	5,950	5,625
ERAA	Negatif	Trading	Positif	Hold	1,090	1,070	1,055	1,105	1,125	1,040
EXCL	Negatif	Trading	Positif	Hold	1,015	960	910	1,065	1,120	900
GOTO	Positif	Trading	Negatif	Hold	2,295	2,260	2,235	2,320	2,355	2,200
HMSP	Positif	Trading	Positif	Spec. Buy	113	111	109	115	117	107
HRUM	Positif	Trading	Positif	Spec. Buy	1,740	1,725	1,710	1,755	1,770	1,685
ICBP	Positif	Trading	Negatif	Hold	10,250	10,125	10,000	10,375	10,500	9,850
INCO	Negatif	Trading	Negatif	Sell	7,550	7,425	7,350	7,625	7,750	7,225
INDF	Positif	Trading	Negatif	Hold	6,675	6,625	6,575	6,725	6,775	6,475
INDY	Positif	Oversold	Negatif	Spec. Buy	2,385	2,330	2,305	2,410	2,465	2,270
INKP	Positif	Oversold	Negatif	Spec. Buy	8,475	8,300	8,225	8,550	8,725	8,100
INTP	Negatif	Trading	Negatif	Sell	10,000	9,825	9,675	10,150	10,325	9,525
ITMG	Positif	Trading	Positif	Spec. Buy	35,675	35,400	35,200	35,875	36,150	34,675
JPFA	Negatif	Trading	Positif	Hold	1,350	1,330	1,315	1,365	1,385	1,295
KLBF	Negatif	Trading	Positif	Hold	2,075	2,055	2,045	2,085	2,105	2,010
MDKA	Positif	Trading	Negatif	Hold	4,775	4,720	4,675	4,820	4,875	4,605
MEDC	Negatif	OverBought	Positif	Sell	1,380	1,350	1,335	1,395	1,425	1,315
MIKA	Positif	Oversold	Positif	Buy	1,570	1,525	1,500	1,595	1,640	1,480
MNCN	Positif	Trading	Positif	Spec. Buy	3,395	3,355	3,325	3,425	3,465	3,275
PGAS	Negatif	Trading	Positif	Hold	231	226	221	236	241	218
PTBA	Negatif	Trading	Positif	Hold	770	755	735	790	805	725
SMGR	Negatif	Trading	Positif	Hold	7,375	7,275	7,200	7,450	7,550	7,075
TBIG	Negatif	Trading	Positif	Hold	2,430	2,400	2,370	2,460	2,490	2,335
TINS	Positif	Trading	Negatif	Hold	2,125	2,100	2,055	2,170	2,195	2,025
TLKM	Negatif	Trading	Positif	Hold	1,260	1,230	1,195	1,295	1,325	1,175
TOWR	Negatif	Trading	Positif	Hold	3,865	3,830	3,805	3,890	3,925	3,750
TPIA	Negatif	Trading	Negatif	Sell	1,125	1,115	1,105	1,135	1,145	1,090
UNTR	Positif	Oversold	Negatif	Spec. Buy	2,305	2,265	2,245	2,325	2,365	2,210
UNVR	Positif	Trading	Positif	Spec. Buy	24,725	24,450	24,275	24,900	25,175	23,925
WIKA	Positif	Trading	Negatif	Hold	4,640	4,600	4,580	4,660	4,700	4,510

## OUR TEAM

**Sukarno Alatas**

Head of Equity Research

[sukarno@kiwoom.co.id](mailto:sukarno@kiwoom.co.id) | 021 5010 5800**Michelle Abadi**

Associate

[michelle@kiwoom.co.id](mailto:michelle@kiwoom.co.id) | 021 5010 5800**Abdul Azis Setyo Wibowo**

Equity Research Analyst

[azis@kiwoom.co.id](mailto:azis@kiwoom.co.id) | 021 5010 5800**Rizky Khaerunnisa**

Equity Research Analyst

[rizky@kiwoom.co.id](mailto:rizky@kiwoom.co.id) | 021 5010 5800**OTHER DISCLOSURES**

All Kiwoom's research reports made available to clients are simultaneously available on our own website <http://www.kiwoom.co.id/>. Not all research content is redistributed, e-mailed or made available to third-party aggregators. For all research reports available on a particular stock, please contact your sales representative. Any data discrepancies in this report could be the result of different calculations and/or adjustments.

**DISCLAIMER** This report has been prepared and issued by PT Kiwoom Sekuritas Indonesia. Information has been obtained from sources believed to be reliable but Kiwoom Securities do not warrant its completeness or accuracy. Forward-looking information or statements in this report contain information that is based on forecast of future results, estimates of amounts not yet determinable, assumptions, and therefore involve known and unknown risks and uncertainties which may cause the actual results, performance or achievements of their subject matter to be materially different from current expectations.

To the fullest extent allowed by law, PT Kiwoom Sekuritas Indonesia shall not be liable for any direct, indirect or consequential losses, loss of profits, damages, costs or expenses incurred or suffered by any person or organization arising from reliance on or use of any information contained on this report. The information that we provide should not be construed in any manner whatsoever as, personalized advice.

No mention of a particular security in this report constitutes a recommendation to buy, sell or hold that or any security, or that any particular security, portfolio of securities, transaction or investment strategy is suitable for any specific person. This report is being supplied to you solely for your information and may not be reproduced by, further distributed to or published in whole or in part by, any other person.