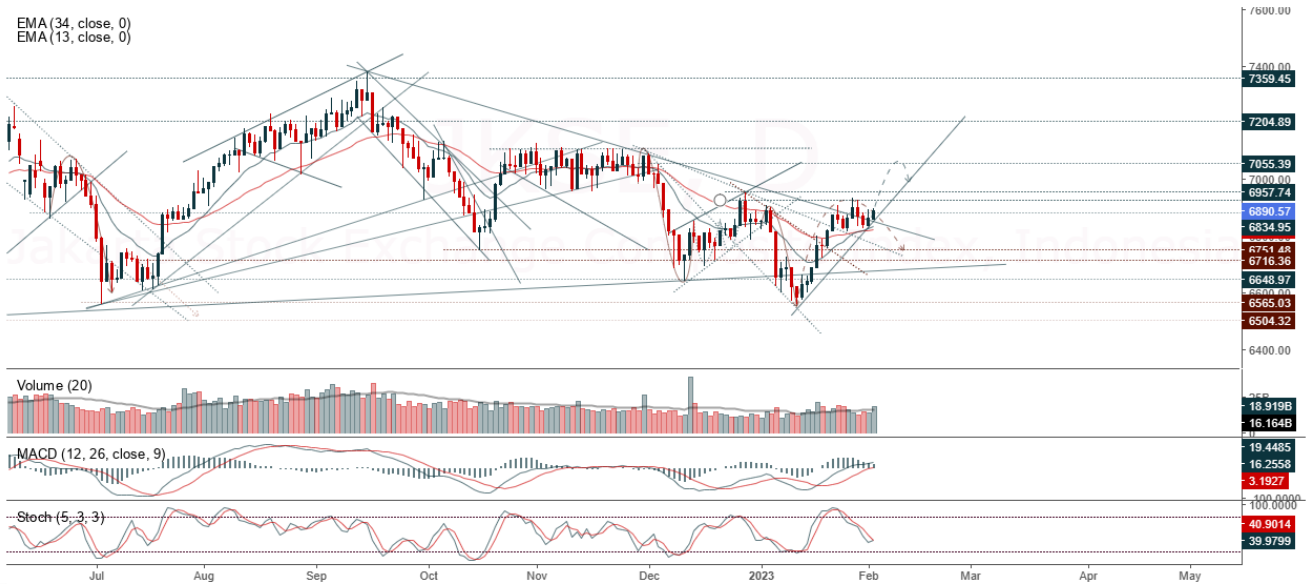


**JCI Range Today 6,838 – 6,855 (Support), 6,925 – 6,932 (Resistance)**

Jakarta Stock Exchange Composite Index, Indonesia, Jakarta:JKSE, D

EMA (34, close, 0)  
EMA (13, close, 0)



JCI closed higher with a bullish candle. The stochastic indicator has the potential to return to the golden cross, MACD histogram is moving positive (bullish line) and volume is increasing. If JCI is able to move bullish, there is a chance for JCI to go to the resistance at the range of 6,925 – 6,932. If it moves bearish, JCI is expected to weaken to the support at the range of 6,838 – 6,855.

**ACES**

Ace Hardware Indonesia Tbk, Indonesia, Jakarta:ACES, D



**(ACES)** The price closed higher with a bullish candle. The price has the opportunity to strengthen again to the nearest resistance. Stochastic indicator is bearish, MACD histogram is moving positive (bullish line) and volume is increasing. Confirmation to buy if the next candle is bullish again or buy on support if it goes down first. We suggest being careful if it fails to stay above the support level. **(Trading Buy)**

**TRADING STRATEGY:**

1. Target Price: The price has a bullish opportunity to test the resistance level 505. If it breaks level 505 then the price will go to level 520. We recommend to be careful if the price fails to break through or turn around the support area.

2. Stop Loss: To minimize the risk of loss, we recommend placing a stop loss at level 476.

Entry Buy : 484 – 494  
 Target Price : 505 – 520  
 Support : 478 – 484  
 Cutloss : 476

**CTRA**

Ciputra Development Tbk, Indonesia, Jakarta:CTRA, D

EMA(13, close, 0)  
EMA(34, close, 0)



**(CTRA)** The price closed higher and broke up to the resistance. The price has the opportunity to strengthen again to the next resistance. Stochastic indicator is bullish, MACD histogram is moving positive (bullish line) and volume has increased significantly. Confirmation to buy if the next candle is bullish again or buy on support if it goes down first. We suggest being careful if it fails to stay above the support level. **(Trading Buy)**

**TRADING STRATEGY:**

1.Target Price: The price has a bullish opportunity to test the resistance level 1,020. If it breaks level 1,020 then the price will go to level 1,030. We recommend to be careful if the price fails to break through or turn around the support area.

2. Stop Loss: To minimize the risk of loss, we recommend placing a stop loss at level 955.

- Entry Buy : 980 – 995
- Target Price : 1,020 – 1,030
- Support : 960 – 980
- Cutloss : 955

## ELSA

Elnusa Tbk, Indonesia, Jakarta:ELSA, D

EMA (13, close, 0)



**(ELSA)** The price closed higher with a bullish candle. The price has the opportunity to strengthen again to the nearest resistance. The stochastic indicator is back to the golden cross, MACD histogram is moving positive (bullish line) and volume is increasing. Confirmation to buy if the next candle is bullish again or buy on support if it goes down first. We suggest being careful if it fails to stay above the support level. **(Trading Buy)**

### TRADING STRATEGY:

1. Target Price: The price has a bullish opportunity to test the resistance level 326. If it breaks level 326 then the price will go to level 330. We recommend to be careful if the price fails to break through or turn around the support area.

2. Stop Loss: To minimize the risk of loss, we recommend placing a stop loss at level 304.

Entry Buy : 312 – 318  
Target Price : 326 – 330  
Support : 306 – 312  
Cutloss : 304

**WIKA**

Wijaya Karya Tbk, Indonesia, Jakarta:WIKA, D

EMA (13, close, 0)  
EMA (34, close, 0)



**(WIKA)** The price closed higher with a bullish candle. The price has the opportunity to strengthen again to the nearest resistance. Stochastic indicator is bullish, MACD histogram is moving positive (bullish line) and volume is increasing slightly. Confirmation to buy if the next candle is bullish again or buy on support if it goes down first. We suggest being careful if it fails to stay above the support level. **(Trading Buy)**

**TRADING STRATEGY:**

- 1.Target Price: The price has a bullish opportunity to test the resistance level 730. If it breaks level 730 then the price will go to level 740. We recommend to be careful if the price fails to break through or turn around the support area.
2. Stop Loss: To minimize the risk of loss, we recommend placing a stop loss at level 680.

Entry Buy : 695 – 710  
 Target Price : 730 – 740  
 Support : 685 – 695  
 Cutloss : 680

**Forecast – Technical Analysis**

Ticker	MA5	RSI Rec	MACD Trend	Recomm.	Pivot Point	Support		Resistance		Stop Loss Level
						1	2	1	2	
JCI	Negatif	Trading	Positif	Hold	6,875	6,850	6,825	6,900	6,925	6,725
ADRO	Negatif	Trading	Positif	Hold	491	477	468	500	515	461
AMRT	Positif	Oversold	Negatif	Spec. Buy	2,915	2,855	2,815	2,955	3,015	2,770
ANTM	Positif	Trading	Positif	Spec. Buy	1,400	1,375	1,340	1,435	1,460	1,320
ARTO	Negatif	OverBought	Positif	Sell	2,965	2,910	2,865	3,010	3,065	2,820
ASII	Negatif	OverBought	Positif	Sell	2,350	2,320	2,290	2,380	2,410	2,255
BBCA	Positif	Trading	Positif	Spec. Buy	3,430	3,210	3,010	3,630	3,850	2,965
BBNI	Negatif	OverBought	Positif	Sell	5,925	5,900	5,825	6,000	6,025	5,750
BBRI	Negatif	Trading	Positif	Hold	8,450	8,375	8,325	8,500	8,575	8,200
BBTN	Positif	Trading	Positif	Spec. Buy	9,125	9,075	8,975	9,225	9,275	8,850
BFIN	Negatif	Trading	Positif	Hold	4,635	4,585	4,555	4,665	4,715	4,485
BMRI	Positif	Trading	Positif	Spec. Buy	1,360	1,350	1,335	1,375	1,385	1,315
BRIS	Negatif	Trading	Positif	Hold	9,700	9,650	9,525	9,825	9,875	9,375
BRPT	Positif	Trading	Negatif	Hold	1,355	1,345	1,330	1,370	1,380	1,310
BUKA	Positif	Trading	Negatif	Hold	835	825	820	840	850	805
CPIN	Negatif	Trading	Positif	Hold	293	286	279	300	307	275
EMTK	Positif	Trading	Negatif	Hold	5,825	5,750	5,675	5,900	5,975	5,600
ERAA	Positif	Trading	Positif	Spec. Buy	1,105	1,090	1,080	1,115	1,130	1,065
EXCL	Positif	OverBought	Positif	Hold	1,005	965	940	1,030	1,070	925
GOTO	Positif	Trading	Negatif	Hold	2,260	2,215	2,180	2,295	2,340	2,145
HMSP	Negatif	Trading	Positif	Hold	120	114	109	125	131	107
HRUM	Negatif	Trading	Positif	Hold	1,720	1,690	1,655	1,755	1,785	1,630
ICBP	Negatif	Trading	Negatif	Sell	10,325	10,225	10,150	10,400	10,500	9,975
INCO	Negatif	Trading	Positif	Hold	7,475	7,425	7,350	7,550	7,600	7,225
INDF	Positif	Trading	Negatif	Hold	6,625	6,575	6,525	6,675	6,725	6,425
INDY	Negatif	Oversold	Negatif	Specu. Buy	2,380	2,355	2,330	2,405	2,430	2,295
INKP	Positif	Oversold	Negatif	Spec. Buy	8,575	8,450	8,400	8,625	8,750	8,275
INTP	Positif	Trading	Negatif	Hold	10,225	10,025	9,800	10,450	10,650	9,650
ITMG	Negatif	Trading	Positif	Hold	35,300	34,850	34,675	35,475	35,925	34,150
JPFA	Negatif	Trading	Positif	Hold	1,355	1,330	1,320	1,365	1,390	1,300
KLBF	Negatif	Trading	Positif	Hold	2,145	2,090	2,025	2,210	2,265	1,995
MDKA	Positif	OverBought	Negatif	Sell	4,780	4,735	4,700	4,815	4,860	4,625
MEDC	Negatif	OverBought	Positif	Sell	1,355	1,330	1,310	1,375	1,400	1,290
MIKA	Negatif	Trading	Positif	Hold	1,605	1,575	1,555	1,625	1,655	1,530
MNCN	Negatif	Trading	Positif	Hold	3,400	3,380	3,350	3,430	3,450	3,300
PGAS	Positif	OverBought	Positif	Hold	235	231	227	239	243	223
PTBA	Positif	OverBought	Positif	Hold	785	775	775	785	795	760
SMGR	Positif	Trading	Positif	Spec. Buy	7,375	7,275	7,225	7,425	7,525	7,100
TBIG	Positif	Trading	Positif	Spec. Buy	2,410	2,385	2,370	2,425	2,450	2,330
TINS	Positif	Trading	Positif	Spec. Buy	2,130	2,110	2,090	2,150	2,170	2,060
TLKM	Positif	Trading	Positif	Spec. Buy	1,270	1,260	1,245	1,285	1,295	1,230
TOWR	Positif	Trading	Positif	Spec. Buy	3,870	3,840	3,810	3,900	3,930	3,755
TPIA	Negatif	Trading	Negatif	Sell	1,125	1,120	1,105	1,140	1,145	1,090
UNTR	Positif	Oversold	Negatif	Spec. Buy	2,305	2,280	2,255	2,330	2,355	2,220
UNVR	Positif	Trading	Positif	Spec. Buy	24,475	23,975	23,575	24,875	25,375	23,225
WIKA	Positif	Oversold	Negatif	Spec. Buy	4,685	4,625	4,575	4,735	4,795	4,505

## OUR TEAM

**Sukarno Alatas**

Head of Equity Research

[sukarno@kiwoom.co.id](mailto:sukarno@kiwoom.co.id) | 021 5010 5800**Michelle Abadi**

Associate

[michelle@kiwoom.co.id](mailto:michelle@kiwoom.co.id) | 021 5010 5800**Abdul Azis Setyo Wibowo**

Equity Research Analyst

[azis@kiwoom.co.id](mailto:azis@kiwoom.co.id) | 021 5010 5800**Rizky Khaerunnisa**

Equity Research Analyst

[rizky@kiwoom.co.id](mailto:rizky@kiwoom.co.id) | 021 5010 5800**OTHER DISCLOSURES**

All Kiwoom's research reports made available to clients are simultaneously available on our own website <http://www.kiwoom.co.id/>. Not all research content is redistributed, e-mailed or made available to third-party aggregators. For all research reports available on a particular stock, please contact your sales representative. Any data discrepancies in this report could be the result of different calculations and/or adjustments.

**DISCLAIMER** This report has been prepared and issued by PT Kiwoom Sekuritas Indonesia. Information has been obtained from sources believed to be reliable but Kiwoom Securities do not warrant its completeness or accuracy. Forward-looking information or statements in this report contain information that is based on forecast of future results, estimates of amounts not yet determinable, assumptions, and therefore involve known and unknown risks and uncertainties which may cause the actual results, performance or achievements of their subject matter to be materially different from current expectations.

To the fullest extent allowed by law, PT Kiwoom Sekuritas Indonesia shall not be liable for any direct, indirect or consequential losses, loss of profits, damages, costs or expenses incurred or suffered by any person or organization arising from reliance on or use of any information contained on this report. The information that we provide should not be construed in any manner whatsoever as, personalized advice.

No mention of a particular security in this report constitutes a recommendation to buy, sell or hold that or any security, or that any particular security, portfolio of securities, transaction or investment strategy is suitable for any specific person. This report is being supplied to you solely for your information and may not be reproduced by, further distributed to or published in whole or in part by, any other person.