

**JCI Range Today 6,855 – 6,876 (Support), 6,953 – 6,967 (Resistance)**

Jakarta Stock Exchange Composite Index, Indonesia, Jakarta:JKSE, D

EMA (34, close, 0)  
EMA (13, close, 0)



JCI closed higher with a bullish candle. The stochastic indicator is potentially bullish, MACD histogram is moving positive (bullish line) and volume is increasing. If JCI is able to move bullish, there is a chance for JCI to go to the resistance at the range of 6,953 – 6,967. If it moves bearish, JCI is expected to weaken to the support at the range of 6,855 – 6,876.

**ASSA**

Adi Sarana Armada Tbk, Indonesia, Jakarta:ASSA, D



**(ASSA)** The price closed higher with a bullish candle. The price has the opportunity to strengthen again to the nearest resistance. The stochastic indicator is bearish, MACD histogram is moving positive (bullish line) and the volume trend is increasing. Confirmation to buy if the next candle is bullish again or buy on support if it goes down first. We suggest being careful if it fails to stay above the support level. **(Trading Buy)**

**TRADING STRATEGY:**

1. Target Price: The price has a bullish opportunity to test the resistance level 975. If it breaks level 975 then the price will go to level 995. We recommend to be careful if the price fails to break through or turn around the support area.

2. Stop Loss: To minimize the risk of loss, we recommend placing a stop loss at level 915.

Entry Buy : 930 – 950  
Target Price : 975 – 995  
Support : 920 – 930  
Cutloss : 915

**BMRI**

Bank Mandiri Persero Tbk PT, Indonesia, Jakarta:BMRI, D

EMA  
EMA



**(BMRI)** The price closed higher and formed a swing low. The price has the opportunity to strengthen again to the nearest resistance. Stochastic golden cross indicator, MACD histogram is moving positive (bullish line) and volume is increasing. Confirmation to buy if the next candle is bullish again or buy on support if it goes down first. We suggest being careful if it fails to stay above the support level. **(Trading Buy)**

**TRADING STRATEGY:**

1.Target Price: The price has a bullish opportunity to test the resistance level 10,125. If it breaks level 10,125 then the price will go to level 10,225. We recommend to be careful if the price fails to break through or turn around the support area.

2. Stop Loss: To minimize the risk of loss, we recommend placing a stop loss at level 9,675.

Entry Buy : 9,750 – 9,925  
 Target Price : 10,125 – 10,225  
 Support : 9,700 – 9,750  
 Cutloss : 9,675

**CENT**

Centratama Telekomunikasi Ind, Indonesia, Jakarta:CENT, D

EMA (13, close, 0)  
EMA (34, close, 0)



**(CENT)** The price closed higher and broke up to the resistance. The price has the opportunity to strengthen again to the next resistance. The stochastic indicator is back to the golden cross, MACD histogram is moving positive (bullish line) and volume is increasing. Confirmation to buy if the next candle is bullish again or buy on support if it goes down first. We suggest being careful if it fails to stay above the support level. **(Trading Buy)**

**TRADING STRATEGY:**

1.Target Price: The price has a bullish opportunity to test the resistance level 129. If it breaks level 129 then the price will go to level 135. We recommend to be careful if the price fails to break through or turn around the support area.

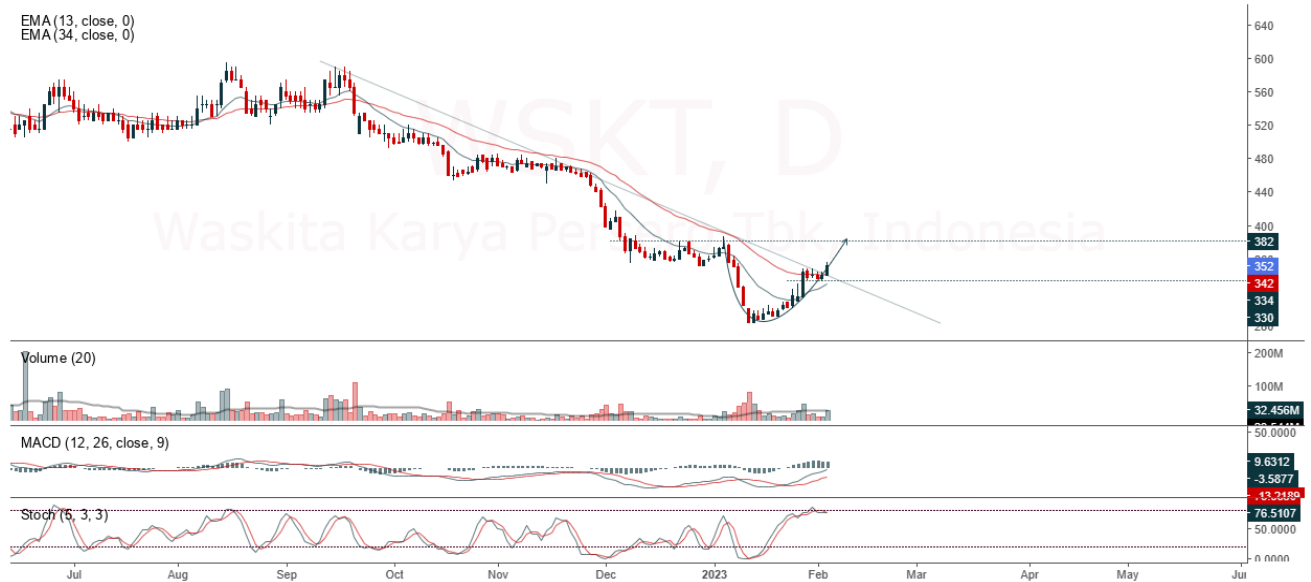
2. Stop Loss: To minimize the risk of loss, we recommend placing a stop loss at level 117.

Entry Buy : 121 – 125  
Target Price : 129 – 135  
Support : 118 – 121  
Cutloss : 117

**WSKT**

Waskita Karya Persero Tbk, Indonesia, Jakarta:WSKT, D

EMA (13, close, 0)  
EMA (34, close, 0)



**(WSKT)** The price closed higher with a bullish candle. The price has the opportunity to strengthen again to the nearest resistance. Stochastic indicator is bullish, MACD histogram is moving positive (bullish line) and volume is increasing. Confirmation to buy if the next candle is bullish again or buy on support if it goes down first. We suggest being careful if it fails to stay above the support level. **(Trading Buy)**

**TRADING STRATEGY:**

1.Target Price: The price has a bullish opportunity to test the resistance level 364. If it breaks level 364 then the price will go to level 372. We recommend to be careful if the price fails to break through or turn around the support area.

2. Stop Loss: To minimize the risk of loss, we recommend placing a stop loss at level 336.

Entry Buy : 344 – 352  
Target Price : 364 – 372  
Support : 338 – 344  
Cutloss : 336

**Forecast – Technical Analysis**

Ticker	MA5	RSI Rec	MACD Trend	Recomm.	Pivot Point	Support		Resistance		Stop Loss Level
						1	2	1	2	
JCI	Positif	Trading	Positif	Spec. Buy	6,925	6,900	6,875	6,950	6,975	6,750
ADRO	Positif	Trading	Positif	Spec. Buy	495	489	481	505	510	473
AMRT	Positif	Oversold	Negatif	Spec. Buy	2,810	2,750	2,680	2,880	2,940	2,640
ANTM	Positif	OverBought	Positif	Hold	1,385	1,345	1,300	1,430	1,470	1,280
ARTO	Negatif	OverBought	Positif	Sell	2,975	2,955	2,905	3,025	3,045	2,860
ASII	Negatif	OverBought	Positif	Sell	2,345	2,305	2,245	2,405	2,445	2,210
BBCA	Negatif	Trading	Positif	Hold	3,665	3,535	3,435	3,765	3,895	3,380
BBNI	Negatif	Trading	Positif	Hold	5,925	5,875	5,825	5,975	6,025	5,750
BBRI	Positif	Trading	Positif	Spec. Buy	8,625	8,525	8,425	8,725	8,825	8,275
BBTN	Positif	Trading	Positif	Spec. Buy	9,250	9,175	9,075	9,350	9,425	8,925
BFIN	Negatif	Trading	Positif	Hold	4,705	4,625	4,555	4,775	4,855	4,485
BMRI	Positif	Trading	Positif	Spec. Buy	1,370	1,350	1,330	1,390	1,410	1,310
BRIS	Positif	Trading	Positif	Spec. Buy	9,850	9,750	9,650	9,950	10,050	9,500
BRPT	Positif	Trading	Negatif	Hold	1,360	1,340	1,330	1,370	1,390	1,310
BUKA	Positif	Trading	Negatif	Hold	830	825	810	845	850	800
CPIN	Negatif	OverBought	Positif	Sell	302	297	292	307	312	287
EMTK	Positif	Trading	Negatif	Hold	5,825	5,800	5,750	5,875	5,900	5,675
ERAA	Negatif	Trading	Positif	Hold	1,155	1,120	1,095	1,180	1,215	1,075
EXCL	Negatif	Trading	Positif	Hold	980	970	950	1,000	1,010	935
GOTO	Positif	Trading	Negatif	Hold	2,245	2,220	2,205	2,260	2,285	2,170
HMSP	Negatif	OverBought	Positif	Sell	125	122	119	128	131	117
HRUM	Negatif	Trading	Positif	Hold	1,675	1,640	1,610	1,705	1,740	1,585
ICBP	Negatif	Trading	Negatif	Sell	10,375	10,225	10,100	10,500	10,650	9,925
INCO	Negatif	Trading	Negatif	Sell	7,425	7,325	7,175	7,575	7,675	7,075
INDF	Positif	Trading	Negatif	Hold	6,675	6,600	6,550	6,725	6,800	6,450
INDY	Positif	Oversold	Negatif	Spec. Buy	2,315	2,255	2,205	2,365	2,425	2,170
INKP	Positif	Trading	Positif	Spec. Buy	8,625	8,575	8,500	8,700	8,750	8,375
INTP	Negatif	Trading	Positif	Hold	10,475	10,325	10,150	10,650	10,800	10,000
ITMG	Positif	Trading	Positif	Spec. Buy	34,725	34,150	33,625	35,250	35,825	33,125
JPFA	Negatif	Trading	Positif	Hold	1,365	1,345	1,330	1,380	1,400	1,310
KLBF	Negatif	OverBought	Positif	Sell	2,205	2,140	2,105	2,240	2,305	2,075
MDKA	Positif	Trading	Negatif	Hold	4,705	4,635	4,575	4,765	4,835	4,505
MEDC	Positif	OverBought	Positif	Hold	1,290	1,245	1,215	1,320	1,365	1,195
MIKA	Negatif	Trading	Positif	Hold	1,590	1,565	1,540	1,615	1,640	1,515
MNCN	Positif	Trading	Positif	Spec. Buy	3,360	3,320	3,280	3,400	3,440	3,230
PGAS	Negatif	OverBought	Positif	Sell	236	229	226	239	246	222
PTBA	Negatif	OverBought	Positif	Sell	785	780	775	790	795	765
SMGR	Negatif	Trading	Positif	Hold	7,300	7,275	7,200	7,375	7,400	7,100
TBIG	Positif	Trading	Positif	Spec. Buy	2,375	2,320	2,275	2,420	2,475	2,240
TINS	Positif	Trading	Positif	Spec. Buy	2,115	2,090	2,055	2,150	2,175	2,025
TLKM	Positif	Trading	Positif	Spec. Buy	1,260	1,255	1,240	1,275	1,280	1,225
TOWR	Positif	Trading	Positif	Spec. Buy	3,895	3,870	3,845	3,920	3,945	3,785
TPIA	Negatif	Trading	Negatif	Sell	1,125	1,120	1,110	1,135	1,140	1,095
UNTR	Positif	Trading	Negatif	Hold	2,325	2,315	2,305	2,335	2,345	2,270
UNVR	Positif	Oversold	Negatif	Spec. Buy	24,125	23,900	23,725	24,300	24,525	23,375
WIKA	Positif	Trading	Negatif	Hold	4,715	4,685	4,655	4,745	4,775	4,585

## OUR TEAM

**Sukarno Alatas**

Head of Equity Research

[sukarno@kiwoom.co.id](mailto:sukarno@kiwoom.co.id) | 021 5010 5800**Michelle Abadi**

Associate

[michelle@kiwoom.co.id](mailto:michelle@kiwoom.co.id) | 021 5010 5800**Abdul Azis Setyo Wibowo**

Equity Research Analyst

[azis@kiwoom.co.id](mailto:azis@kiwoom.co.id) | 021 5010 5800**Rizky Khaerunnisa**

Equity Research Analyst

[rizky@kiwoom.co.id](mailto:rizky@kiwoom.co.id) | 021 5010 5800**OTHER DISCLOSURES**

All Kiwoom's research reports made available to clients are simultaneously available on our own website <http://www.kiwoom.co.id/>. Not all research content is redistributed, e-mailed or made available to third-party aggregators. For all research reports available on a particular stock, please contact your sales representative. Any data discrepancies in this report could be the result of different calculations and/or adjustments.

**DISCLAIMER** This report has been prepared and issued by PT Kiwoom Sekuritas Indonesia. Information has been obtained from sources believed to be reliable but Kiwoom Securities do not warrant its completeness or accuracy. Forward-looking information or statements in this report contain information that is based on forecast of future results, estimates of amounts not yet determinable, assumptions, and therefore involve known and unknown risks and uncertainties which may cause the actual results, performance or achievements of their subject matter to be materially different from current expectations.

To the fullest extent allowed by law, PT Kiwoom Sekuritas Indonesia shall not be liable for any direct, indirect or consequential losses, loss of profits, damages, costs or expenses incurred or suffered by any person or organization arising from reliance on or use of any information contained on this report. The information that we provide should not be construed in any manner whatsoever as, personalized advice.

No mention of a particular security in this report constitutes a recommendation to buy, sell or hold that or any security, or that any particular security, portfolio of securities, transaction or investment strategy is suitable for any specific person. This report is being supplied to you solely for your information and may not be reproduced by, further distributed to or published in whole or in part by, any other person.