

**JCI Range Today 6,834 – 6,871 (Support), 6,932 – 6,951 (Resistance)**

Jakarta Stock Exchange Composite Index, Indonesia, Jakarta:JKSE, D

EMA (34, close, 0)  
EMA (13, close, 0)



JCI closed slightly higher with a bullish candle. Stochastic indicator is bullish, MACD histogram is moving down (bullish line) and volume is falling. If it moves bearish, JCI is expected to weaken to support at the range of 6,834 – 6,871. If JCI is able to move bullish, there is a chance for JCI to go to the resistance at the range of 6,932 – 6,951.

## ACES

Ace Hardware Indonesia Tbk, Indonesia, Jakarta:ACES, D



**(ACES)** The price closed higher and broke up to the resistance. The price has the opportunity to strengthen again to the next resistance. Stochastic indicator is bullish, MACD histogram is moving positive (bullish line) and volume is increasing. Confirmation to buy if the next candle is bullish again or buy on support if it goes down first. We suggest being careful if it fails to stay above the support level. **(Trading Buy)**

### TRADING STRATEGY:

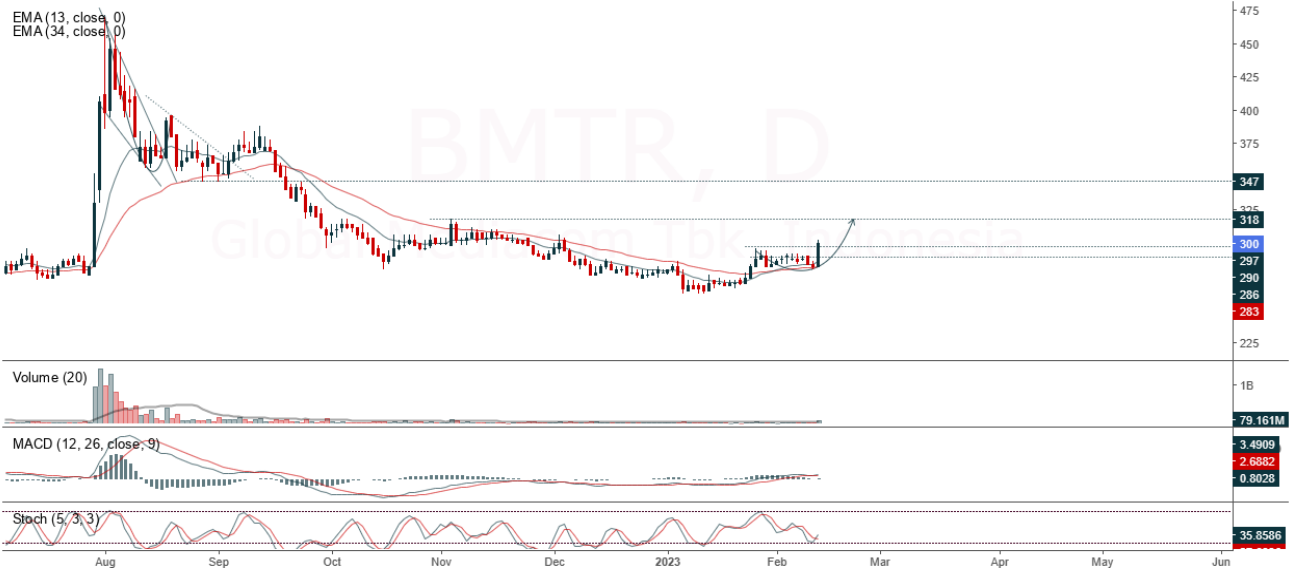
1. Target Price: The price has a bullish opportunity to test the resistance level 565. If it breaks level 565 then the price will go to level 580. We recommend to be careful if the price fails to break through or turn around the support area.

2. Stop Loss: To minimize the risk of loss, we recommend placing a stop loss at level 515.

Entry Buy : 525 – 545  
Target Price : 565 – 580  
Support : 520 – 525  
Cutloss : 515

**BMTR**

Global Mediacom Tbk, Indonesia, Jakarta:BMTR, D



**(BMTR)** The price closed higher and broke up to the resistance. The price has the opportunity to strengthen again to the next resistance. Stochastic golden cross indicator, MACD histogram is moving positive (bullish line) and volume is increasing. Confirmation to buy if the next candle is bullish again or buy on support if it goes down first. We suggest being careful if it fails to stay above the support level. **(Trading Buy)**

**TRADING STRATEGY:**

1.Target Price: The price has a bullish opportunity to test the resistance level 310. If it breaks level 310 then the price will go to level 316. We recommend to be careful if the price fails to break through or turn around the support area.

2. Stop Loss: To minimize the risk of loss, we recommend placing a stop loss at level 288.

Entry Buy : 294 – 300  
Target Price : 310 – 316  
Support : 290 – 294  
Cutloss : 288

**BRIS**

Bank BRISyariah Tbk PT, Indonesia, Jakarta:BRIS, D



**(BRIS)** The price closed higher and formed a swing low. The price has the opportunity to strengthen again to the nearest resistance. Stochastic indicator is bullish, MACD histogram is moving in the positive direction (bullish line) and volume is increasing. Confirmation to buy if the next candle is bullish again or buy on support if it goes down first. We suggest being careful if it fails to stay above the support level. **(Trading Buy)**

**TRADING STRATEGY:**

1. Target Price: The price has a bullish opportunity to test the resistance level 1,400. If it breaks level 1,400 then the price will go to level 1,420. We recommend to be careful if the price fails to break through or turn around the support area.

2. Stop Loss: To minimize the risk of loss, we recommend placing a stop loss at level 1,320.

Entry Buy : 1,335 – 1,365  
 Target Price : 1,400 – 1,420  
 Support : 1,325 – 1,335  
 Cutloss : 1,320

**PGAS**

Perusahaan Gas Negara Persero, Indonesia, Jakarta:PGAS, D

EMA (13, close, 0)  
EMA (34, close, 0)



**(PGAS)** The price closed higher with a bullish candle. The price has the opportunity to strengthen again to the nearest resistance. Stochastic indicator is bullish, MACD histogram is moving positive (bullish line) and volume is increasing. Confirmation to buy if the next candle is bullish again or buy on support if it goes down first. We suggest being careful if it fails to stay above the support level. **(Trading Buy)**

**TRADING STRATEGY:**

- 1.Target Price: The price has a bullish opportunity to test the resistance level 1,660. If it breaks level 1,660 then the price will go to level 1,680. We recommend to be careful if the price fails to break through or turn around the support area.
2. Stop Loss: To minimize the risk of loss, we recommend placing a stop loss at level 1,585.

Entry Buy : 1,580 – 1,625  
 Target Price : 1,660 – 1,680  
 Support : 1,590 – 1,580  
 Cutloss : 1,585

**Forecast – Technical Analysis**

Ticker	MA5	RSI Rec	MACD Trend	Recomm.	Pivot Point	Support		Resistance		Stop Loss Level
						1	2	1	2	
JCI	Negatif	Trading	Positif	Hold	6,900	6,875	6,850	6,925	6,950	6,750
ADRO	Negatif	Trading	Positif	Hold	525	505	479	550	570	472
AMRT	Negatif	Oversold	Negatif	Specu. Buy	2,795	2,760	2,745	2,810	2,845	2,705
ANTM	Positif	Trading	Negatif	Hold	1,310	1,295	1,285	1,320	1,335	1,265
ARTO	Negatif	OverBought	Positif	Sell	2,975	2,915	2,885	3,005	3,065	2,840
ASII	Positif	Trading	Negatif	Hold	2,225	2,205	2,185	2,245	2,265	2,150
BBCA	Positif	Trading	Positif	Spec. Buy	2,905	2,780	2,735	2,950	3,075	2,695
BBNI	Positif	Trading	Negatif	Hold	5,725	5,675	5,650	5,750	5,800	5,550
BBRI	Negatif	OverBought	Positif	Sell	8,850	8,825	8,725	8,950	8,975	8,600
BBTN	Negatif	OverBought	Positif	Sell	9,525	9,475	9,400	9,600	9,650	9,250
BFIN	Negatif	OverBought	Positif	Sell	4,850	4,800	4,750	4,900	4,950	4,680
BMRI	Negatif	Trading	Positif	Hold	1,375	1,365	1,350	1,390	1,400	1,330
BRIS	Negatif	OverBought	Positif	Sell	10,425	10,300	10,125	10,600	10,725	9,975
BRPT	Negatif	Trading	Negatif	Sell	1,345	1,325	1,300	1,370	1,390	1,280
BUKA	Negatif	Trading	Negatif	Sell	850	840	830	860	870	815
CPIN	Positif	Trading	Positif	Spec. Buy	289	282	277	294	301	273
EMTK	Negatif	Trading	Negatif	Sell	5,800	5,750	5,700	5,850	5,900	5,625
ERAA	Positif	Trading	Positif	Spec. Buy	1,085	1,065	1,045	1,105	1,125	1,030
EXCL	Negatif	Trading	Positif	Hold	995	985	965	1,015	1,025	950
GOTO	Positif	Trading	Negatif	Hold	2,280	2,235	2,200	2,315	2,360	2,165
HMSP	Positif	Trading	Negatif	Hold	109	102	94	117	124	93
HRUM	Negatif	Trading	Negatif	Sell	1,645	1,620	1,590	1,675	1,700	1,565
ICBP	Negatif	Trading	Negatif	Sell	10,350	10,150	10,050	10,450	10,650	9,900
INCO	Positif	Trading	Negatif	Hold	7,125	7,100	7,000	7,225	7,250	6,900
INDF	Negatif	Trading	Positif	Hold	6,800	6,725	6,650	6,875	6,950	6,550
INDY	Negatif	Oversold	Negatif	Specu. Buy	2,255	2,225	2,205	2,275	2,305	2,170
INKP	Positif	Trading	Positif	Spec. Buy	8,525	8,450	8,350	8,625	8,700	8,225
INTP	Negatif	OverBought	Positif	Sell	11,425	11,275	11,125	11,575	11,725	10,950
ITMG	Negatif	Trading	Positif	Hold	35,025	34,575	34,225	35,375	35,825	33,725
JPFA	Positif	Trading	Positif	Spec. Buy	1,350	1,340	1,325	1,365	1,375	1,305
KLBF	Negatif	OverBought	Positif	Sell	2,295	2,230	2,165	2,360	2,425	2,135
MDKA	Negatif	Trading	Negatif	Sell	4,645	4,585	4,535	4,695	4,755	4,465
MEDC	Negatif	Trading	Negatif	Sell	1,250	1,215	1,185	1,280	1,315	1,165
MIKA	Negatif	Trading	Positif	Hold	1,620	1,605	1,590	1,635	1,650	1,565
MNCN	Negatif	Trading	Positif	Hold	3,395	3,345	3,315	3,425	3,475	3,265
PGAS	Positif	Trading	Negatif	Hold	217	211	207	221	227	203
PTBA	Negatif	OverBought	Positif	Sell	815	795	770	840	860	760
SMGR	Negatif	OverBought	Positif	Sell	7,650	7,575	7,475	7,750	7,825	7,350
TBIG	Negatif	Oversold	Negatif	Specu. Buy	2,290	2,250	2,220	2,320	2,360	2,185
TINS	Negatif	Trading	Positif	Hold	2,105	2,070	2,045	2,130	2,165	2,015
TLKM	Positif	Trading	Negatif	Hold	1,210	1,195	1,190	1,215	1,230	1,170
TOWR	Positif	Trading	Negatif	Hold	3,790	3,765	3,730	3,825	3,850	3,670
TPIA	Positif	Trading	Negatif	Hold	1,090	1,070	1,045	1,115	1,135	1,030
UNTR	Positif	Trading	Positif	Spec. Buy	2,335	2,320	2,305	2,350	2,365	2,270
UNVR	Negatif	Trading	Positif	Hold	24,700	24,500	24,275	24,925	25,125	23,900
WIKA	Negatif	Trading	Negatif	Sell	4,545	4,505	4,455	4,595	4,635	4,385

## OUR TEAM

**Sukarno Alatas**

Head of Equity Research

[sukarno@kiwoom.co.id](mailto:sukarno@kiwoom.co.id) | 021 5010 5800

**Michelle Abadi**

Associate

[michelle@kiwoom.co.id](mailto:michelle@kiwoom.co.id) | 021 5010 5800

**Abdul Azis Setyo Wibowo**

Equity Research Analyst

[azis@kiwoom.co.id](mailto:azis@kiwoom.co.id) | 021 5010 5800

**Rizky Khaerunnisa**

Equity Research Analyst

[rizky@kiwoom.co.id](mailto:rizky@kiwoom.co.id) | 021 5010 5800



### OTHER DISCLOSURES

All Kiwoom's research reports made available to clients are simultaneously available on our own website <http://www.kiwoom.co.id/>. Not all research content is redistributed, e-mailed or made available to third-party aggregators. For all research reports available on a particular stock, please contact your sales representative. Any data discrepancies in this report could be the result of different calculations and/or adjustments.

**DISCLAIMER** This report has been prepared and issued by PT Kiwoom Sekuritas Indonesia. Information has been obtained from sources believed to be reliable but Kiwoom Securities do not warrant its completeness or accuracy. Forward-looking information or statements in this report contain information that is based on forecast of future results, estimates of amounts not yet determinable, assumptions, and therefore involve known and unknown risks and uncertainties which may cause the actual results, performance or achievements of their subject matter to be materially different from current expectations.

To the fullest extent allowed by law, PT Kiwoom Sekuritas Indonesia shall not be liable for any direct, indirect or consequential losses, loss of profits, damages, costs or expenses incurred or suffered by any person or organization arising from reliance on or use of any information contained on this report. The information that we provide should not be construed in any manner whatsoever as, personalized advice.

No mention of a particular security in this report constitutes a recommendation to buy, sell or hold that or any security, or that any particular security, portfolio of securities, transaction or investment strategy is suitable for any specific person. This report is being supplied to you solely for your information and may not be reproduced by, further distributed to or published in whole or in part by, any other person.