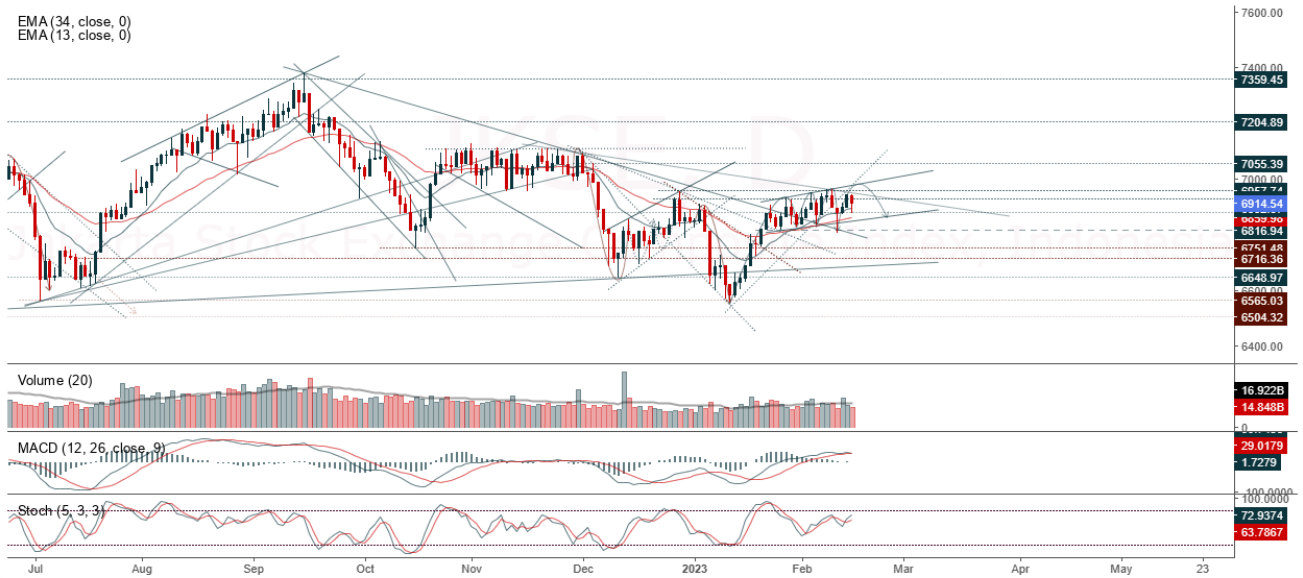


JCI Range Today 6,854 – 6,872 (Support), 6,941 – 6,961 (Resistance)

Jakarta Stock Exchange Composite Index, Indonesia, Jakarta:JKSE, D

EMA (34, close, 0)
EMA (13, close, 0)



JCI closed lower with a bearish candle. Stochastic indicator is bullish, MACD histogram is moving positive but falling (flat line) and volume is decreasing. If it moves bearish, JCI is expected to weaken to the support at the range of 6,854 – 6,872. If JCI is able to move bullish, there is a chance for JCI to go to the resistance at the range of 6,941 – 6,961.

AGRO

Bank Rakyat Indonesia Agroniaga, Indonesia, Jakarta:AGRO, D



(AGRO) The price closed higher with a bullish candle. The price has the opportunity to strengthen again to the nearest resistance. Stochastic indicator is bullish, MACD histogram is moving positive (golden cross line) and volume has increased significantly. Confirmation to buy if the next candle is bullish again or buy on support if it goes down first. We suggest being careful if it fails to stay above the support level. **(Trading Buy)**

TRADING STRATEGY:

1. Target Price: The price has a bullish opportunity to test the resistance level 450. If it breaks level 450 then the price will go to level 462. We recommend to be careful if the price fails to break through or turn around the support area.

2. Stop Loss: To minimize the risk of loss, we recommend placing a stop loss at level 410.

Entry Buy : 422 – 430
 Target Price : 450 – 462
 Support : 412 – 422
 Cutloss : 410

SMGR

Semen Indonesia Persero Tbk, Indonesia, Jakarta:SMGR, D

EMA (13, close, 0)
EMA (34, close, 0)



(SMGR) The price closed lower and has touched support. The price has the opportunity to strengthen again to the nearest resistance. Stochastic indicator is bullish, MACD histogram is moving positive (bullish line) and volume is increasing. Confirmation to buy if the next candle is bullish again or buy on support if it goes down first. We suggest being careful if it fails to stay above the support level. **(Buy on break)**

TRADING STRATEGY:

1. Target Price: The price has a bullish opportunity to test the resistance level 7,775. If it breaks level 7,775 then the price will go to level 7,825. We recommend to be careful if the price fails to break through or turn around the support area.

2. Stop Loss: To minimize the risk of loss, we recommend placing a stop loss at level 7,400.

Entry Buy : 7,475 – 7,625
 Target Price : 7,775 – 7,825
 Support : 7,425 – 7,475
 Cutloss : 7,400

TBIG

Tower Bersama Infrastructure Tbk PT, Indonesia, Jakarta:TBIG, D



(TBIG) The price closed higher and broke up to the closest resistance. The price has the opportunity to strengthen again to the next resistance. Stochastic indicator is bullish, MACD histogram is moving positive (bullish line) and volume is increasing slightly. Confirmation to buy if the next candle is bullish again or buy on support if it goes down first. We suggest being careful if it fails to stay above the support level. **(Trading Buy)**

TRADING STRATEGY:

1. Target Price: The price has a bullish opportunity to test the resistance level 2,250. If it breaks level 2,250 then the price will go to level 2,280. We recommend to be careful if the price fails to break through or turn around the support area.

2. Stop Loss: To minimize the risk of loss, we recommend placing a stop loss at level 2,130.

Entry Buy : 2,160 – 2,200
 Target Price : 2,250 – 2,280
 Support : 2,140 – 2,160
 Cutloss : 2,130

WOOD



(WOOD) The price closed higher with a bullish candle. The price has the opportunity to strengthen again to the next resistance. Stochastic indicator is bullish, MACD histogram is moving positive (bullish line) and volume is increasing. Confirmation to buy if the next candle is bullish again or buy on support if it goes down first. We suggest being careful if it fails to stay above the support level. **(Trading Buy)**

TRADING STRATEGY:

- 1.Target Price: The price has a bullish opportunity to test the resistance level 420. If it breaks level 420 then the price will go to level 424. We recommend to be careful if the price fails to break through or turn around the support area.
2. Stop Loss: To minimize the risk of loss, we recommend placing a stop loss at level 394.

Entry Buy : 400 – 408
 Target Price : 420 – 424
 Support : 396 – 400
 Cutloss : 394

Forecast – Technical Analysis

Ticker	MA5	RSI Rec	MACD Trend	Recomm.	Pivot Point	Support		Resistance		Stop Loss Level
						1	2	1	2	
JCI	Positif	Trading	Positif	Spec. Buy	6,925	6,900	6,850	6,975	7,000	6,750
ADRO	Negatif	OverBought	Positif	Sell	545	540	535	550	555	525
AMRT	Positif	Oversold	Positif	Buy	2,935	2,825	2,765	2,995	3,105	2,720
ANTM	Negatif	Trading	Negatif	Sell	1,345	1,325	1,295	1,375	1,395	1,275
ARTO	Negatif	OverBought	Positif	Sell	3,030	2,990	2,930	3,090	3,130	2,885
ASII	Positif	Trading	Negatif	Hold	2,200	2,165	2,130	2,235	2,270	2,095
BBCA	Positif	Oversold	Negatif	Spec. Buy	2,860	2,795	2,760	2,895	2,960	2,715
BBNI	Positif	Trading	Negatif	Hold	5,675	5,625	5,525	5,775	5,825	5,450
BBRI	Negatif	OverBought	Positif	Sell	8,850	8,800	8,700	8,950	9,000	8,575
BBTN	Negatif	Trading	Positif	Hold	9,400	9,350	9,200	9,550	9,600	9,075
BFIN	Negatif	OverBought	Positif	Sell	4,865	4,840	4,785	4,920	4,945	4,715
BMRI	Positif	Trading	Positif	Spec. Buy	1,350	1,330	1,305	1,375	1,395	1,285
BRIS	Negatif	OverBought	Positif	Sell	10,250	10,150	10,000	10,400	10,500	9,850
BRPT	Negatif	Trading	Negatif	Sell	1,495	1,380	1,255	1,620	1,735	1,235
BUKA	Positif	Trading	Negatif	Hold	855	850	835	870	875	820
CPIN	Positif	Trading	Negatif	Hold	279	271	261	289	297	257
EMTK	Negatif	Trading	Negatif	Sell	5,800	5,775	5,675	5,900	5,925	5,600
ERAA	Positif	Trading	Positif	Spec. Buy	1,080	1,060	1,050	1,090	1,110	1,035
EXCL	Negatif	Trading	Positif	Hold	995	965	945	1,015	1,045	930
GOTO	Positif	Trading	Negatif	Hold	2,265	2,240	2,215	2,290	2,315	2,180
HMSP	Positif	Trading	Negatif	Hold	118	117	113	122	123	112
HRUM	Positif	Trading	Negatif	Hold	1,635	1,610	1,590	1,655	1,680	1,565
ICBP	Positif	Trading	Negatif	Hold	10,325	10,250	10,175	10,400	10,475	10,025
INCO	Positif	Trading	Negatif	Hold	7,025	6,925	6,775	7,175	7,275	6,675
INDF	Positif	Trading	Positif	Spec. Buy	6,675	6,625	6,525	6,775	6,825	6,425
INDY	Positif	Oversold	Negatif	Spec. Buy	2,265	2,210	2,175	2,300	2,355	2,140
INKP	Positif	Oversold	Positif	Buy	8,200	8,125	7,975	8,350	8,425	7,850
INTP	Negatif	OverBought	Positif	Sell	11,550	11,400	11,125	11,825	11,975	10,950
ITMG	Positif	Trading	Positif	Spec. Buy	35,500	35,075	34,875	35,700	36,125	34,350
JPFA	Positif	Trading	Negatif	Hold	1,335	1,320	1,300	1,355	1,370	1,280
KLBF	Negatif	OverBought	Positif	Sell	2,300	2,280	2,250	2,330	2,350	2,215
MDKA	Positif	Trading	Negatif	Hold	4,650	4,575	4,520	4,705	4,780	4,450
MEDC	Positif	Trading	Negatif	Hold	1,195	1,160	1,125	1,230	1,265	1,110
MIKA	Negatif	Trading	Positif	Hold	1,615	1,605	1,585	1,635	1,645	1,560
MNCN	Positif	Trading	Positif	Spec. Buy	3,440	3,365	3,330	3,475	3,550	3,280
PGAS	Positif	Trading	Negatif	Hold	219	215	211	223	227	207
PTBA	Negatif	Strong Sell	Positif	Sell	870	860	840	890	900	825
SMGR	Negatif	OverBought	Positif	Sell	7,600	7,550	7,425	7,725	7,775	7,325
TBIG	Negatif	Trading	Negatif	Sell	2,325	2,285	2,265	2,345	2,385	2,230
TINS	Negatif	Trading	Positif	Hold	2,175	2,130	2,095	2,210	2,255	2,065
TLKM	Positif	Trading	Negatif	Hold	1,210	1,205	1,195	1,220	1,225	1,180
TOWR	Positif	Trading	Negatif	Hold	3,790	3,755	3,700	3,845	3,880	3,640
TPIA	Positif	Trading	Negatif	Hold	1,085	1,075	1,065	1,095	1,105	1,050
UNTR	Positif	Trading	Positif	Spec. Buy	2,325	2,310	2,295	2,340	2,355	2,260
UNVR	Positif	Trading	Positif	Spec. Buy	24,850	24,500	24,175	25,175	25,525	23,800
WIKA	Positif	Trading	Negatif	Hold	4,545	4,525	4,485	4,585	4,605	4,415

OUR TEAM

Sukarno Alatas

Head of Equity Research

sukarno@kiwoom.co.id | 021 5010 5800

Michelle Abadi

Associate

michelle@kiwoom.co.id | 021 5010 5800

Abdul Azis Setyo Wibowo

Equity Research Analyst

azis@kiwoom.co.id | 021 5010 5800

Rizky Khaerunnisa

Equity Research Analyst

rizky@kiwoom.co.id | 021 5010 5800



OTHER DISCLOSURES

All Kiwoom's research reports made available to clients are simultaneously available on our own website <http://www.kiwoom.co.id/>. Not all research content is redistributed, e-mailed or made available to third-party aggregators. For all research reports available on a particular stock, please contact your sales representative. Any data discrepancies in this report could be the result of different calculations and/or adjustments.

DISCLAIMER This report has been prepared and issued by PT Kiwoom Sekuritas Indonesia. Information has been obtained from sources believed to be reliable but Kiwoom Securities do not warrant its completeness or accuracy. Forward-looking information or statements in this report contain information that is based on forecast of future results, estimates of amounts not yet determinable, assumptions, and therefore involve known and unknown risks and uncertainties which may cause the actual results, performance or achievements of their subject matter to be materially different from current expectations.

To the fullest extent allowed by law, PT Kiwoom Sekuritas Indonesia shall not be liable for any direct, indirect or consequential losses, loss of profits, damages, costs or expenses incurred or suffered by any person or organization arising from reliance on or use of any information contained on this report. The information that we provide should not be construed in any manner whatsoever as, personalized advice.

No mention of a particular security in this report constitutes a recommendation to buy, sell or hold that or any security, or that any particular security, portfolio of securities, transaction or investment strategy is suitable for any specific person. This report is being supplied to you solely for your information and may not be reproduced by, further distributed to or published in whole or in part by, any other person.