

JCI Range Today 6,838 – 6,854 (Support), 6,941 – 6,961 (Resistance)

Jakarta Stock Exchange Composite Index, Indonesia, Jakarta:JKSE, D

EMA (34, close, 0)
EMA (13, close, 0)



JCI closed stagnant with a doji candle. Stochastic indicator is bearish, MACD histogram is negative (line flat) and volume is increasing. If it moves bearish, JCI is expected to weaken to the support at the range of 6,838 – 6,854. If JCI is able to move bullish, there is a chance for JCI to go to the resistance at the range of 6,941 – 6,961.

AGII

Indo Gas Tbk PT, Indonesia, Jakarta:AGII, D

(13, close, 0)
(34, close, 0)



(AGII) The price closed higher and returned to swing low. The price has the opportunity to strengthen again to the nearest resistance. The stochastic indicator has a potential golden cross, MACD histogram is moving positive (bullish line) and volume is increasing. Confirmation to buy if the next candle is bullish again or buy on support if it goes down first. We suggest being careful if it fails to stay above the support. **(Trading Buy)**

TRADING STRATEGY:

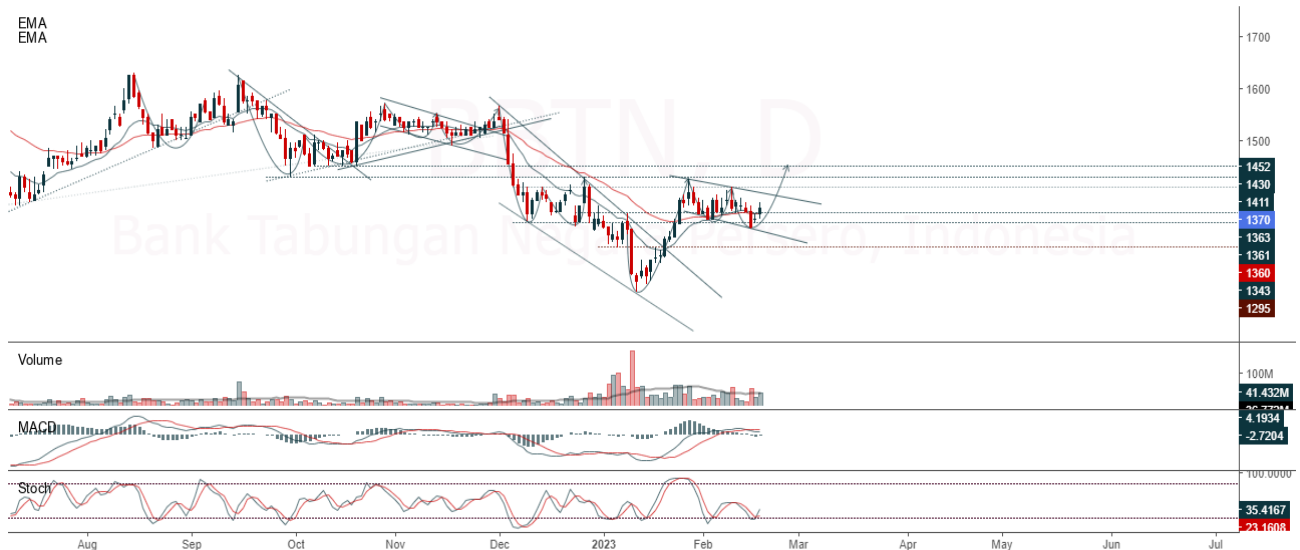
1. Target Price: The price has a bullish opportunity to test the resistance level 2,210. If it breaks level 2,210 then the price will go to level 2,250. We recommend to be careful if the price fails to break through or turn around the support area.

2. Stop Loss: To minimize the risk of loss, we recommend placing a stop loss at level 2,060.

Entry Buy	: 2,100 – 2,150
Target Price	: 2,210 – 2,250
Support	: 2,070 – 2,100
Cutloss	: 2,060

BBTN

Bank Tabungan Negara Persero, Indonesia, Jakarta:BBTN, D



(BBTN) The price closed higher and formed a swing low. The price has the opportunity to strengthen again to the nearest resistance. Stochastic golden cross indicator, MACD histogram is moving negative (bullish line) and volume is increasing. Confirmation to buy if the next candle is bullish again or buy on support if it goes down first. We suggest being careful if it fails to stay above the support. **(Buy on break)**

TRADING STRATEGY:

1. Target Price: The price has a bullish opportunity to test the resistance level 1,400. If it breaks level 1,400 then the price will go to level 1,415. We recommend to be careful if the price fails to break through or turn around the support area.

2. Stop Loss: To minimize the risk of loss, we recommend placing a stop loss at level 1,325.

Entry Buy : 1,350 – 1,370
 Target Price : 1,400 – 1,415
 Support : 1,330 – 1,350
 Cutloss : 1,325

ENRG

Energi Mega Persada Tbk, Indonesia, Jakarta:ENRG, D

EMA (13, close, 0)
EMA (34, close, 0)



(ENRG) The price closed higher and returned to bullish. The price has the opportunity to strengthen again to the next resistance. Stochastic indicator is bullish, MACD histogram is moving positive (bullish line) and volume is increasing. Confirmation to buy if the next candle is bullish again or buy on support if it goes down first. We suggest being careful if it fails to stay above the support. **(Trading Buy)**

TRADING STRATEGY:

1.Target Price: The price has a bullish opportunity to test the resistance level 308. If it breaks level 308 then the price will go to level 314. We recommend to be careful if the price fails to break through or turn around the support area.

2. Stop Loss: To minimize the risk of loss, we recommend placing a stop loss at level 288.

Entry Buy : 294 – 300
Target Price : 308 – 314
Support : 290 – 294
Cutloss : 288

INDF

Indofood Sukses Makmur Tbk PT, Indonesia, Jakarta:INDF, D



(INDF) The price closed stagnant and touched support. The price has the opportunity to strengthen again to the nearest resistance. The stochastic indicator has a potential golden cross, MACD histogram is moving positive (bearish line) and volume is increasing. Confirmation to buy if the next candle is bullish again or buy on support if it goes down first. We suggest being careful if it fails to stay above the support. **(Trading Buy)**

TRADING STRATEGY:

1. Target Price: The price has a bullish opportunity to test the resistance level 6,725. If it breaks level 6,725 then the price will go to level 6,775. We recommend to be careful if the price fails to break through or turn around the support area.

2. Stop Loss: To minimize the risk of loss, we recommend placing a stop loss at level 6,425.

Entry Buy : 6,500 – 6,600
 Target Price : 6,725 – 6,775
 Support : 6,450 – 6,500
 Cutloss : 6,425

Forecast – Technical Analysis

Ticker	MA5	RSI Rec	MACD Trend	Recomm.	Pivot Point	Support		Resistance		Stop Loss Level
						1	2	1	2	
JCI	Negatif	Trading	Positif	Hold	6,900	6,875	6,850	6,925	6,950	6,750
ADRO	Negatif	OverBought	Positif	Sell	550	535	515	570	585	505
AMRT	Negatif	Trading	Positif	Hold	2,900	2,865	2,830	2,935	2,970	2,785
ANTM	Negatif	Trading	Positif	Hold	1,320	1,310	1,290	1,340	1,350	1,270
ARTO	Negatif	Trading	Positif	Hold	2,975	2,925	2,865	3,035	3,085	2,820
ASII	Positif	Oversold	Negatif	Spec. Buy	2,100	2,055	2,020	2,135	2,180	1,985
BBCA	Positif	Trading	Negatif	Hold	3,015	2,950	2,905	3,060	3,125	2,860
BBNI	Negatif	Trading	Negatif	Sell	5,675	5,650	5,575	5,750	5,775	5,500
BBRI	Negatif	Trading	Positif	Hold	8,775	8,700	8,650	8,825	8,900	8,525
BBTN	Positif	Trading	Positif	Spec. Buy	9,325	9,250	9,200	9,375	9,450	9,050
BFIN	Positif	OverBought	Positif	Hold	4,875	4,855	4,815	4,915	4,935	4,740
BMRI	Positif	Trading	Negatif	Hold	1,365	1,350	1,335	1,380	1,395	1,315
BRIS	Positif	Trading	Positif	Spec. Buy	10,225	10,150	10,025	10,350	10,425	9,875
BRPT	Negatif	OverBought	Positif	Sell	1,665	1,595	1,515	1,745	1,815	1,490
BUKA	Negatif	OverBought	Positif	Sell	890	880	865	905	915	850
CPIN	Positif	Trading	Negatif	Hold	273	264	257	280	289	253
EMTK	Positif	Trading	Negatif	Hold	5,800	5,750	5,700	5,850	5,900	5,600
ERAA	Negatif	Trading	Negatif	Sell	1,085	1,065	1,055	1,095	1,115	1,035
EXCL	Positif	Trading	Negatif	Hold	990	975	960	1,005	1,020	945
GOTO	Negatif	Trading	Negatif	Sell	2,270	2,240	2,220	2,290	2,320	2,185
HMSP	Negatif	Trading	Positif	Hold	124	121	119	126	129	117
HRUM	Positif	Oversold	Negatif	Spec. Buy	1,600	1,580	1,550	1,630	1,650	1,525
ICBP	Positif	Trading	Negatif	Hold	10,275	10,150	10,025	10,400	10,525	9,875
INCO	Positif	Oversold	Negatif	Spec. Buy	6,800	6,750	6,675	6,875	6,925	6,575
INDF	Positif	Trading	Negatif	Hold	6,575	6,550	6,475	6,650	6,675	6,375
INDY	Negatif	Oversold	Positif	Spec. Buy	2,260	2,225	2,200	2,285	2,320	2,165
INKP	Positif	Oversold	Negatif	Spec. Buy	8,025	7,950	7,875	8,100	8,175	7,750
INTP	Positif	OverBought	Positif	Hold	11,225	10,950	10,750	11,425	11,700	10,575
ITMG	Negatif	Trading	Positif	Hold	35,125	34,975	34,700	35,400	35,550	34,175
JPFA	Positif	Trading	Negatif	Hold	1,320	1,310	1,305	1,325	1,335	1,285
KLBF	Positif	Trading	Positif	Spec. Buy	2,275	2,220	2,185	2,310	2,365	2,150
MDKA	Positif	Trading	Negatif	Hold	4,755	4,695	4,645	4,805	4,865	4,575
MEDC	Positif	Oversold	Negatif	Spec. Buy	1,115	1,085	1,055	1,145	1,175	1,040
MIKA	Positif	Trading	Positif	Spec. Buy	1,590	1,570	1,555	1,605	1,625	1,530
MNCN	Negatif	Trading	Positif	Hold	3,490	3,475	3,460	3,505	3,520	3,405
PGAS	Negatif	Trading	Negatif	Sell	221	217	213	225	229	209
PTBA	Negatif	Strong Sell	Positif	Sell	870	855	815	910	925	805
SMGR	Positif	Trading	Positif	Spec. Buy	7,500	7,400	7,325	7,575	7,675	7,200
TBIG	Negatif	Trading	Positif	Hold	2,310	2,275	2,260	2,325	2,360	2,225
TINS	Negatif	Trading	Positif	Hold	2,190	2,145	2,110	2,225	2,270	2,075
TLKM	Positif	Trading	Negatif	Hold	1,195	1,180	1,150	1,225	1,240	1,135
TOWR	Positif	Trading	Negatif	Hold	3,755	3,740	3,705	3,790	3,805	3,650
TPIA	Positif	Trading	Negatif	Hold	1,095	1,090	1,080	1,105	1,110	1,065
UNTR	Positif	Trading	Positif	Spec. Buy	2,315	2,290	2,275	2,330	2,355	2,240
UNVR	Negatif	Trading	Positif	Hold	24,550	24,450	24,250	24,750	24,850	23,875
WIKA	Positif	Oversold	Negatif	Spec. Buy	4,510	4,490	4,460	4,540	4,560	4,395

OUR TEAM

Sukarno Alatas

Head of Equity Research

sukarno@kiwoom.co.id | 021 5010 5800**Michelle Abadi**

Associate

michelle@kiwoom.co.id | 021 5010 5800**Abdul Azis Setyo Wibowo**

Equity Research Analyst

azis@kiwoom.co.id | 021 5010 5800**Rizky Khaerunnisa**

Equity Research Analyst

rizky@kiwoom.co.id | 021 5010 5800**OTHER DISCLOSURES**

All Kiwoom's research reports made available to clients are simultaneously available on our own website <http://www.kiwoom.co.id/>. Not all research content is redistributed, e-mailed or made available to third-party aggregators. For all research reports available on a particular stock, please contact your sales representative. Any data discrepancies in this report could be the result of different calculations and/or adjustments.

DISCLAIMER This report has been prepared and issued by PT Kiwoom Sekuritas Indonesia. Information has been obtained from sources believed to be reliable but Kiwoom Securities do not warrant its completeness or accuracy. Forward-looking information or statements in this report contain information that is based on forecast of future results, estimates of amounts not yet determinable, assumptions, and therefore involve known and unknown risks and uncertainties which may cause the actual results, performance or achievements of their subject matter to be materially different from current expectations.

To the fullest extent allowed by law, PT Kiwoom Sekuritas Indonesia shall not be liable for any direct, indirect or consequential losses, loss of profits, damages, costs or expenses incurred or suffered by any person or organization arising from reliance on or use of any information contained on this report. The information that we provide should not be construed in any manner whatsoever as, personalized advice.

No mention of a particular security in this report constitutes a recommendation to buy, sell or hold that or any security, or that any particular security, portfolio of securities, transaction or investment strategy is suitable for any specific person. This report is being supplied to you solely for your information and may not be reproduced by, further distributed to or published in whole or in part by, any other person.