

JCI Range Today 6,815 – 6,839 (Support), 6,880 – 6,906 (Resistance)

Jakarta Stock Exchange Composite Index, Indonesia, Jakarta:JKSE, D

EMA (34, close, 0)
EMA (13, close, 0)

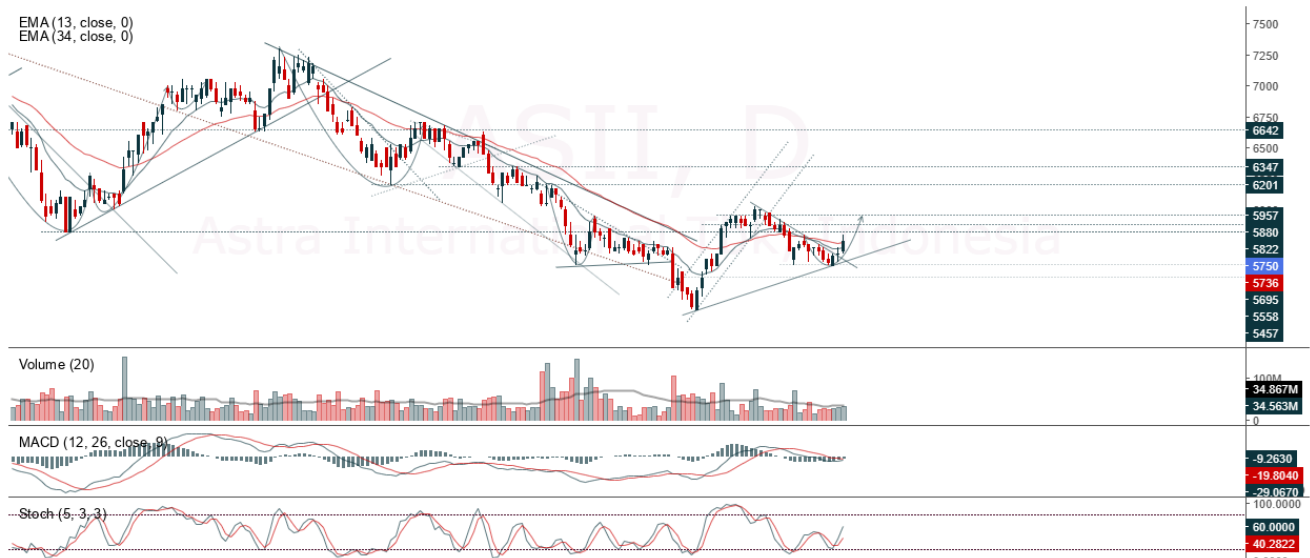


JCI closed higher and slightly reversed after touching the nearest resistance. Stochastic golden cross indicator, MACD histogram is negative (bearish line) and volume is decreasing. If it moves bearish, JCI is expected to weaken to the support range of 6,815 – 6,839. If JCI is able to move bullish, there is a chance for JCI to go to the resistance at the range of 6,880 – 6,906.

ASII

Astra International Tbk, Indonesia, Jakarta:ASII, D

EMA (13, close, 0)
EMA (34, close, 0)



(ASII) The price closed higher with a bullish candle. The price has the opportunity to strengthen again to the nearest resistance. Stochastic indicator is bullish, MACD histogram is moving in the positive direction (bullish line) and volume is increasing. Confirmation to buy if the next candle is bullish again or buy on support if it goes down first. We suggest being careful if it fails to stay above the support level. **(Trading Buy)**

TRADING STRATEGY:

1. Target Price: The price has a bullish opportunity to test the resistance level 5,850. If it breaks level 5,850 then the price will go to level 5,900. We recommend to be careful if the price fails to break through or turn around the support area.

2. Stop Loss: To minimize the risk of loss, we recommend placing a stop loss at level 5,600.

Entry Buy : 5,650 – 5,650
 Target Price : 5,850 – 5,900
 Support : 5,625 – 5,650
 Cutloss : 5,600

LSIP



(LSIP) The price closed higher with a bullish candle. The price has the opportunity to strengthen again to the next resistance. Stochastic indicator is bullish, MACD histogram is moving positive (golden cross line) and volume is increasing. Confirmation to buy if the next candle is bullish again or buy on support if it goes down first. We suggest being careful if it fails to stay above the support level. **(Trading Buy)**

TRADING STRATEGY:

1. Target Price: The price has a bullish opportunity to test the resistance level 1,140. If it breaks level 1,140 then the price will go to level 1,150. We recommend to be careful if the price fails to break through or turn around the support area.

2. Stop Loss: To minimize the risk of loss, we recommend placing a stop loss at level 1,075.

Entry Buy : 1,095 – 1,115
 Target Price : 1,140 – 1,150
 Support : 1,080 – 1,095
 Cutloss : 1,075

SCMA

Surya Citra Media Tbk, Indonesia, Jakarta:SCMA, D



(SCMA) The price closed higher and formed a swing low. The price has the opportunity to strengthen again to the nearest resistance. Stochastic golden cross indicator, MACD histogram is moving in the positive direction (bullish line) and volume is increasing. Confirmation to buy if the next candle is bullish again or buy on support if it goes down first. We suggest being careful if it fails to stay above the support level. **(Trading Buy)**

TRADING STRATEGY:

1.Target Price: The price has a bullish opportunity to test the resistance level 226. If it breaks level 226 then the price will go to level 232. We recommend to be careful if the price fails to break through or turn around the support area.

2. Stop Loss: To minimize the risk of loss, we recommend placing a stop loss at level 212.

Entry Buy : 216 – 222
 Target Price : 226 – 232
 Support : 214 – 216
 Cutloss : 212

SIMP



(SIMP) The price closed higher and broke up to the resistance. The price has the opportunity to strengthen again to the nearest resistance. Stochastic indicator is bullish, MACD histogram is moving positive (bullish line) and volume has increased significantly. Confirmation to buy if the next candle is bullish again or buy on support if it goes down first. We suggest being careful if it fails to stay above the support level. **(Trading Buy)**

TRADING STRATEGY:

1. Target Price: The price has a bullish opportunity to test the resistance level 438. If it breaks level 438 then the price will go to level 444. We recommend to be careful if the price fails to break through or turn around the support area.

2. Stop Loss: To minimize the risk of loss, we recommend placing a stop loss at level 418.

Entry Buy : 424 – 430
 Target Price : 438 – 444
 Support : 420 – 424
 Cutloss : 418

Forecast – Technical Analysis

Ticker	MAS	RSI Rec	MACD Trend	Recomm.	Pivot Point	Support		Resistance		Stop Loss Level
						1	2	1	2	
JCI	Positif	Trading	Negatif	Hold	6,850	6,825	6,825	6,850	6,875	6,725
ADRO	Positif	Trading	Positif	Spec. Buy	520	505	484	540	555	476
AMRT	Positif	Trading	Positif	Spec. Buy	2,900	2,845	2,820	2,925	2,980	2,775
ANTM	Positif	Trading	Negatif	Hold	1,335	1,305	1,285	1,355	1,385	1,265
ARTO	Negatif	OverBought	Positif	Sell	2,980	2,930	2,900	3,010	3,060	2,855
ASII	Positif	Oversold	Negatif	Spec. Buy	2,030	1,995	1,970	2,055	2,090	1,940
BBCA	Positif	Oversold	Negatif	Spec. Buy	2,665	2,535	2,445	2,755	2,885	2,405
BBNI	Positif	Trading	Negatif	Hold	5,675	5,650	5,550	5,775	5,800	5,450
BBRI	Negatif	Trading	Negatif	Sell	8,675	8,600	8,550	8,725	8,800	8,425
BBTN	Positif	Oversold	Negatif	Spec. Buy	8,900	8,775	8,700	8,975	9,100	8,550
BFIN	Positif	Trading	Positif	Spec. Buy	4,780	4,745	4,700	4,825	4,860	4,625
BMRI	Positif	Trading	Negatif	Hold	1,340	1,330	1,320	1,350	1,360	1,300
BRIS	Negatif	Trading	Negatif	Sell	10,025	9,975	9,850	10,150	10,200	9,700
BRPT	Negatif	OverBought	Positif	Sell	1,575	1,520	1,425	1,670	1,725	1,405
BUKA	Negatif	OverBought	Positif	Sell	925	905	890	940	960	875
CPIN	Positif	Oversold	Negatif	Spec. Buy	264	261	258	267	270	254
EMTK	Positif	Trading	Negatif	Hold	5,700	5,625	5,575	5,750	5,825	5,475
ERAA	Positif	Oversold	Negatif	Spec. Buy	1,000	970	940	1,030	1,060	925
EXCL	Positif	Trading	Negatif	Hold	950	940	925	965	975	910
GOTO	Negatif	Trading	Positif	Hold	2,280	2,260	2,230	2,310	2,330	2,195
HMSP	Positif	Trading	Negatif	Hold	118	117	114	121	122	112
HRUM	Positif	Oversold	Negatif	Spec. Buy	1,585	1,570	1,560	1,595	1,610	1,535
ICBP	Negatif	Trading	Negatif	Sell	10,225	10,125	10,075	10,275	10,375	9,900
INCO	Positif	Oversold	Negatif	Spec. Buy	6,700	6,625	6,500	6,825	6,900	6,400
INDF	Positif	Trading	Negatif	Hold	6,600	6,550	6,525	6,625	6,675	6,425
INDY	Positif	Oversold	Positif	Buy	2,260	2,235	2,220	2,275	2,300	2,185
INKP	Positif	Oversold	Negatif	Spec. Buy	8,000	7,925	7,825	8,100	8,175	7,700
INTP	Positif	Trading	Positif	Spec. Buy	11,225	11,075	11,000	11,300	11,450	10,825
ITMG	Negatif	Trading	Positif	Hold	35,975	35,625	35,375	36,225	36,575	34,850
JPFA	Negatif	Trading	Negatif	Sell	1,325	1,310	1,310	1,325	1,340	1,290
KLBF	Positif	Trading	Negatif	Hold	2,160	2,135	2,010	2,285	2,310	1,975
MDKA	Positif	Trading	Negatif	Hold	4,440	4,285	4,140	4,585	4,740	4,075
MEDC	Positif	Oversold	Negatif	Spec. Buy	1,060	1,060	1,020	1,100	1,100	1,005
MIKA	Positif	Oversold	Positif	Buy	1,540	1,525	1,515	1,550	1,565	1,490
MNCN	Negatif	Trading	Positif	Hold	3,595	3,575	3,525	3,645	3,665	3,470
PGAS	Positif	Trading	Negatif	Hold	214	211	208	217	220	204
PTBA	Positif	OverBought	Positif	Hold	875	875	860	890	890	850
SMGR	Positif	Trading	Negatif	Hold	7,475	7,300	7,250	7,525	7,700	7,125
TBIG	Positif	Oversold	Positif	Buy	2,250	2,225	2,210	2,265	2,290	2,175
TINS	Positif	Trading	Positif	Spec. Buy	2,095	2,080	2,045	2,130	2,145	2,015
TLKM	Positif	Oversold	Negatif	Spec. Buy	1,190	1,175	1,170	1,195	1,210	1,150
TOWR	Negatif	Trading	Positif	Hold	3,965	3,955	3,885	4,035	4,045	3,825
TPIA	Negatif	Oversold	Negatif	Specu. Buy	1,080	1,075	1,065	1,090	1,095	1,050
UNTR	Negatif	Trading	Positif	Hold	2,310	2,295	2,280	2,325	2,340	2,245
UNVR	Positif	Trading	Positif	Spec. Buy	24,675	24,450	24,150	24,975	25,200	23,800
WIKA	Positif	Oversold	Negatif	Spec. Buy	4,435	4,375	4,345	4,465	4,525	4,275

OUR TEAM

Sukarno Alatas

Head of Equity Research

sukarno@kiwoom.co.id | 021 5010 5800**Michelle Abadi**

Associate

michelle@kiwoom.co.id | 021 5010 5800**Abdul Azis Setyo Wibowo**

Equity Research Analyst

azis@kiwoom.co.id | 021 5010 5800**Rizky Khaerunnisa**

Equity Research Analyst

rizky@kiwoom.co.id | 021 5010 5800**OTHER DISCLOSURES**

All Kiwoom's research reports made available to clients are simultaneously available on our own website <http://www.kiwoom.co.id/>. Not all research content is redistributed, e-mailed or made available to third-party aggregators. For all research reports available on a particular stock, please contact your sales representative. Any data discrepancies in this report could be the result of different calculations and/or adjustments.

DISCLAIMER This report has been prepared and issued by PT Kiwoom Sekuritas Indonesia. Information has been obtained from sources believed to be reliable but Kiwoom Securities do not warrant its completeness or accuracy. Forward-looking information or statements in this report contain information that is based on forecast of future results, estimates of amounts not yet determinable, assumptions, and therefore involve known and unknown risks and uncertainties which may cause the actual results, performance or achievements of their subject matter to be materially different from current expectations.

To the fullest extent allowed by law, PT Kiwoom Sekuritas Indonesia shall not be liable for any direct, indirect or consequential losses, loss of profits, damages, costs or expenses incurred or suffered by any person or organization arising from reliance on or use of any information contained on this report. The information that we provide should not be construed in any manner whatsoever as, personalized advice.

No mention of a particular security in this report constitutes a recommendation to buy, sell or hold that or any security, or that any particular security, portfolio of securities, transaction or investment strategy is suitable for any specific person. This report is being supplied to you solely for your information and may not be reproduced by, further distributed to or published in whole or in part by, any other person.