

**JCI Range Today 6,781 – 6,806 (Support), 6,880 – 6,919 (Resistance)**

Jakarta Stock Exchange Composite Index, Indonesia, Jakarta:JKSE, D

EMA (34, close, 0)  
EMA (13, close, 0)

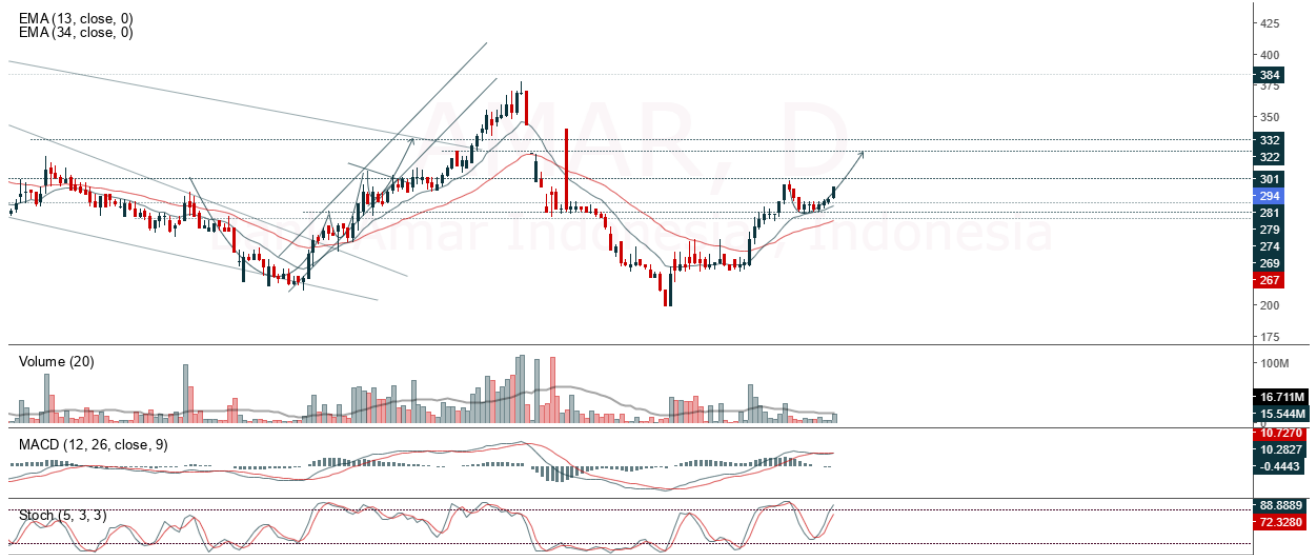


JCI closed lower with a bearish candle. Stochastic indicator is bullish, MACD histogram is moving in the positive direction (bearish line) and volume is increasing. If it moves bearish, JCI is expected to weaken to the support range of 6,781 – 6,806. If JCI is able to move bullish, there is a chance for JCI to go to the resistance at the range of 6,880 – 6,919.

## AMAR

Bank Amar Indonesia , Indonesia, Jakarta:AMAR, D

EMA (13, close, 0)  
EMA (34, close, 0)



**(AMAR)** The price closed higher with a bullish candle. The price has the opportunity to re-test the nearest resistance. Stochastic indicator is bullish, MACD histogram is moving positive (bullish line) and volume is increasing. Confirmation to buy if the next candle is bullish again or buy on support if it goes down first. We suggest being careful if it fails to stay above the support level. **(Trading Buy)**

### TRADING STRATEGY:

1. Target Price: The price has a bullish opportunity to test the resistance level 300. If it breaks level 300 then the price will go to level 306. We recommend to be careful if the price fails to break through or turn around the support area.

2. Stop Loss: To minimize the risk of loss, we recommend placing a stop loss at level 282.

Entry Buy : 286 – 294  
Target Price : 300 – 306  
Support : 284 – 286  
Cutloss : 282

**ASSA**

Adi Sarana Armada Tbk, Indonesia, Jakarta:ASSA, D



**(ASSA)** The price closed higher and is testing resistance. The price has the opportunity to strengthen again to the next resistance. Stochastic indicator is bullish, MACD histogram is moving positive (golden cross line) and volume is increasing. Confirmation to buy if the next candle is bullish again or buy on support if it goes down first. We suggest being careful if it fails to stay above the support level. **(Trading Buy)**

**TRADING STRATEGY:**

1. Target Price: The price has a bullish opportunity to test the resistance level 1,060. If it breaks level 1,060 then the price will go to level 1,080. We recommend to be careful if the price fails to break through or turn around the support area.

2. Stop Loss: To minimize the risk of loss, we recommend placing a stop loss at level 980.

Entry Buy : 1,000 – 1,015  
 Target Price : 1,060 – 1,080  
 Support : 985 – 1,000  
 Cutloss : 980

**JPFA**

Japfa Comfeed Indonesia Tbk, Indonesia, Jakarta:JPFA, D

EMA (13, close, 0)  
EMA (34, close, 0)



**(JPFA)** The price closed higher with a bullish candle. The price has the opportunity to strengthen again to the nearest resistance. Stochastic indicator is bullish, MACD histogram is moving in the positive direction (gold cross opportunity line) and volume is increasing. Confirmation to buy if the next candle is bullish again or buy on support if it goes down first. We suggest being careful if it fails to stay above the support level. **(Trading Buy)**

**TRADING STRATEGY:**

1. Target Price: The price has a bullish opportunity to test the resistance level 1,370. If it breaks level 1,370 then the price will go to level 1,385. We recommend to be careful if the price fails to break through or turn around the support area.
2. Stop Loss: To minimize the risk of loss, we recommend placing a stop loss at level 1,305.

Entry Buy : 1,320 – 1,345  
 Target Price : 1,370 – 1,385  
 Support : 1,310 – 1,320  
 Cutloss : 1,305

**SIDO**

Industri Jamu dan Farmasi Sido Muncul Tbk PT, Indonesia, Jakarta:SIDO, D



**(SIDO)** The price closed higher and formed a swing low. The price has the opportunity to strengthen again to the nearest resistance. Stochastic golden cross indicator, MACD histogram is moving positive (bullish line) and volume is increasing. Confirmation to buy if the next candle is bullish again or buy on support if it goes down first. We suggest being careful if it fails to stay above the support level. **(Trading Buy)**

**TRADING STRATEGY:**

1.Target Price: The price has a bullish opportunity to test the resistance level 900. If it breaks level 900 then the price will go to level 910. We recommend to be careful if the price fails to break through or turn around the support area.

2. Stop Loss: To minimize the risk of loss, we recommend placing a stop loss at level 845.

Entry Buy : 860 – 880  
Target Price : 900 – 910  
Support : 850 – 860  
Cutloss : 845

**Forecast – Technical Analysis**

Ticker	MAS	RSI Rec	MACD Trend	Recomm.	Pivot Point	Support		Resistance		Stop Loss Level
						1	2	1	2	
JCI	Positif	Trading	Negatif	Hold	6,875	6,825	6,825	6,875	6,900	6,725
ADRO	Positif	Trading	Negatif	Hold	510	500	493	515	525	485
AMRT	Negatif	Trading	Positif	Hold	2,970	2,900	2,840	3,030	3,100	2,795
ANTM	Negatif	Trading	Positif	Hold	1,390	1,355	1,330	1,415	1,450	1,310
ARTO	Positif	Trading	Negatif	Hold	2,920	2,875	2,820	2,975	3,020	2,775
ASII	Positif	Oversold	Negatif	Spec. Buy	2,015	1,985	1,965	2,035	2,065	1,935
BBCA	Positif	Oversold	Negatif	Spec. Buy	2,495	2,405	2,355	2,545	2,635	2,315
BBNI	Negatif	Trading	Positif	Hold	6,175	6,075	6,000	6,250	6,350	5,900
BBRI	Negatif	Trading	Negatif	Sell	8,750	8,725	8,650	8,825	8,850	8,525
BBTN	Positif	Trading	Negatif	Hold	8,900	8,775	8,675	9,000	9,125	8,525
BFIN	Positif	Trading	Negatif	Hold	4,725	4,655	4,605	4,775	4,845	4,535
BMRI	Positif	Trading	Negatif	Hold	1,330	1,325	1,315	1,340	1,345	1,295
BRIS	Positif	Trading	Negatif	Hold	10,050	9,975	9,900	10,125	10,200	9,750
BRPT	Positif	Trading	Positif	Spec. Buy	1,500	1,465	1,405	1,560	1,595	1,385
BUKA	Negatif	OverBought	Positif	Sell	945	900	870	975	1,020	860
CPIN	Positif	Oversold	Negatif	Spec. Buy	263	260	257	266	269	253
EMTK	Positif	Oversold	Negatif	Spec. Buy	5,500	5,375	5,250	5,625	5,750	5,175
ERAA	Positif	Oversold	Negatif	Spec. Buy	960	940	920	980	1,000	905
EXCL	Negatif	OverBought	Positif	Sell	1,080	1,030	1,000	1,110	1,160	985
GOTO	Positif	Oversold	Negatif	Spec. Buy	2,130	2,085	2,040	2,175	2,220	2,005
HMSP	Positif	Trading	Negatif	Hold	117	116	112	121	122	111
HRUM	Positif	Trading	Negatif	Hold	1,615	1,595	1,575	1,635	1,655	1,550
ICBP	Positif	Oversold	Negatif	Spec. Buy	10,050	9,950	9,825	10,175	10,275	9,675
INCO	Positif	Oversold	Negatif	Spec. Buy	6,775	6,650	6,525	6,900	7,025	6,425
INDF	Negatif	Trading	Negatif	Sell	6,550	6,475	6,425	6,600	6,675	6,325
INDY	Positif	Oversold	Positif	Buy	2,280	2,225	2,180	2,325	2,380	2,145
INKP	Positif	Oversold	Negatif	Spec. Buy	7,950	7,925	7,850	8,025	8,050	7,750
INTP	Positif	Trading	Negatif	Hold	11,075	10,950	10,775	11,250	11,375	10,600
ITMG	Negatif	Trading	Positif	Hold	36,775	35,800	35,100	37,475	38,450	34,550
JPFA	Negatif	Trading	Negatif	Sell	1,335	1,310	1,295	1,350	1,375	1,275
KLBF	Positif	Trading	Negatif	Hold	2,145	2,105	2,075	2,175	2,215	2,040
MDKA	Positif	Trading	Negatif	Hold	4,465	4,390	4,255	4,600	4,675	4,190
MEDC	Negatif	Trading	Negatif	Sell	1,130	1,095	1,055	1,170	1,205	1,040
MIKA	Positif	Oversold	Negatif	Spec. Buy	1,550	1,540	1,520	1,570	1,580	1,500
MNCN	Negatif	OverBought	Positif	Sell	3,800	3,725	3,660	3,865	3,940	3,605
PGAS	Negatif	Trading	Negatif	Sell	218	215	212	221	224	208
PTBA	Negatif	OverBought	Positif	Sell	865	855	835	885	895	825
SMGR	Positif	Trading	Negatif	Hold	7,325	7,200	7,100	7,425	7,550	6,975
TBIG	Positif	Trading	Positif	Spec. Buy	2,325	2,290	2,245	2,370	2,405	2,210
TINS	Positif	Trading	Positif	Spec. Buy	2,100	2,075	2,040	2,135	2,160	2,005
TLKM	Positif	Oversold	Negatif	Spec. Buy	1,190	1,185	1,170	1,205	1,210	1,150
TOWR	Negatif	Trading	Positif	Hold	3,915	3,860	3,825	3,950	4,005	3,770
TPIA	Positif	Oversold	Negatif	Spec. Buy	1,060	1,045	1,040	1,065	1,080	1,020
UNTR	Positif	Trading	Positif	Spec. Buy	2,310	2,300	2,280	2,330	2,340	2,245
UNVR	Negatif	Trading	Positif	Hold	28,750	27,350	26,350	29,750	31,150	25,950
WIKA	Positif	Oversold	Negatif	Spec. Buy	4,245	4,170	4,105	4,310	4,385	4,045

## OUR TEAM

**Sukarno Alatas**

Head of Equity Research

[sukarno@kiwoom.co.id](mailto:sukarno@kiwoom.co.id) | 021 5010 5800**Michelle Abadi**

Associate

[michelle@kiwoom.co.id](mailto:michelle@kiwoom.co.id) | 021 5010 5800**Abdul Azis Setyo Wibowo**

Equity Research Analyst

[azis@kiwoom.co.id](mailto:azis@kiwoom.co.id) | 021 5010 5800**Rizky Khaerunnisa**

Equity Research Analyst

[rizky@kiwoom.co.id](mailto:rizky@kiwoom.co.id) | 021 5010 5800**OTHER DISCLOSURES**

All Kiwoom's research reports made available to clients are simultaneously available on our own website <http://www.kiwoom.co.id/>. Not all research content is redistributed, e-mailed or made available to third-party aggregators. For all research reports available on a particular stock, please contact your sales representative. Any data discrepancies in this report could be the result of different calculations and/or adjustments.

**DISCLAIMER** This report has been prepared and issued by PT Kiwoom Sekuritas Indonesia. Information has been obtained from sources believed to be reliable but Kiwoom Securities do not warrant its completeness or accuracy. Forward-looking information or statements in this report contain information that is based on forecast of future results, estimates of amounts not yet determinable, assumptions, and therefore involve known and unknown risks and uncertainties which may cause the actual results, performance or achievements of their subject matter to be materially different from current expectations.

To the fullest extent allowed by law, PT Kiwoom Sekuritas Indonesia shall not be liable for any direct, indirect or consequential losses, loss of profits, damages, costs or expenses incurred or suffered by any person or organization arising from reliance on or use of any information contained on this report. The information that we provide should not be construed in any manner whatsoever as, personalized advice.

No mention of a particular security in this report constitutes a recommendation to buy, sell or hold that or any security, or that any particular security, portfolio of securities, transaction or investment strategy is suitable for any specific person. This report is being supplied to you solely for your information and may not be reproduced by, further distributed to or published in whole or in part by, any other person.