

JCI Range Today 6,721 – 6,754 (Support), 6,841 – 6,856 (Resistance)

Jakarta Stock Exchange Composite Index, Indonesia, Jakarta:JKSE, D

EMA (34, close, 0)
EMA (13, close, 0)



JCI closed down with a bearish candle. Stochastic indicator is bearish, MACD histogram is negative (bearish line) and volume is decreasing. If it moves bearish, JCI is expected to weaken to the support range of 6,721 – 6,754. If JCI is able to move bullish, there is a chance for JCI to go to the resistance at the range of 6,841 – 6,856.

PGAS

Perusahaan Gas Negara Persero, Indonesia, Jakarta:PGAS, D

EMA (13, close, 0)
EMA (34, close, 0)



(PGAS) The price closed higher with a bullish candle. The price has the opportunity to strengthen again to the nearest resistance. Stochastic indicator is bullish, MACD histogram is moving positive (bullish line) and volume is neutral. Confirmation to buy if the next candle is bullish again or buy on support if it goes down first. We suggest being careful if it fails to stay above the support level. **(Trading Buy)**

TRADING STRATEGY:

1. Target Price: The price has a bullish opportunity to test the resistance level 1,630. If it breaks level 1,630 then the price will go to level 1,650. We recommend to be careful if the price fails to break through or turn around the support area.

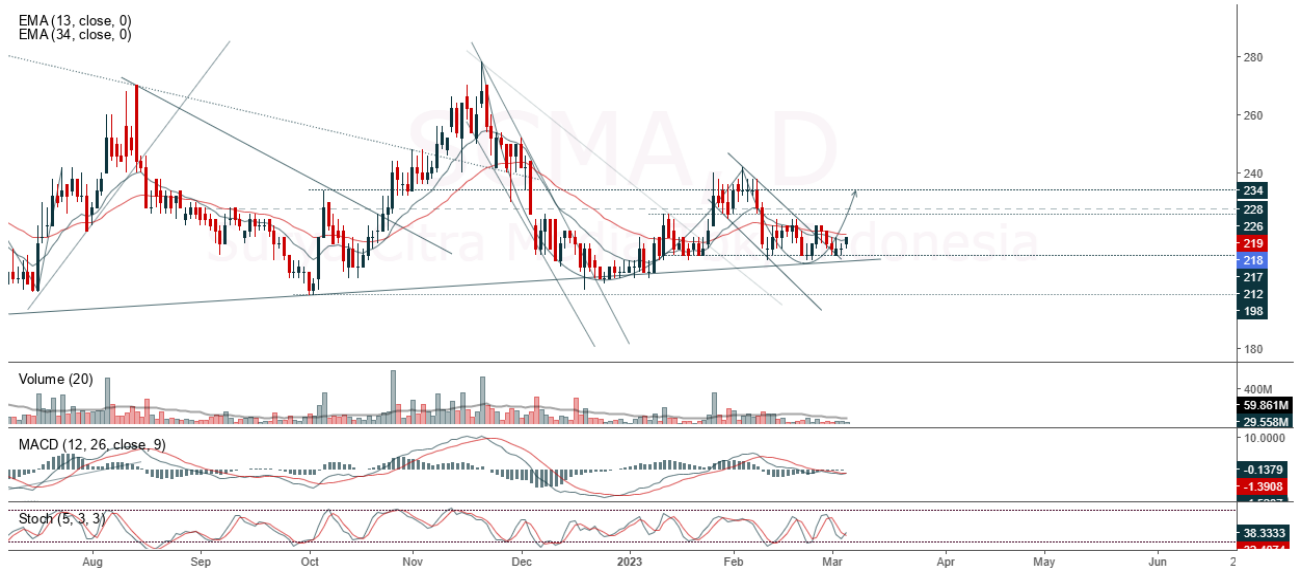
2. Stop Loss: To minimize the risk of loss, we recommend placing a stop loss at level 1,555.

- Entry Buy : 1,575 – 1,600
- Target Price : 1,630 – 1,650
- Support : 1,560 – 1,575
- Cutloss : 1,555

SCMA

Surya Citra Media Tbk, Indonesia, Jakarta:SCMA, D

EMA (13, close, 0)
EMA (34, close, 0)



(SCMA) The price closed higher and formed a swing low. The price has the opportunity to strengthen again to the nearest resistance. Stochastic golden cross indicator, MACD histogram is moving in the positive direction (golden cross opportunity line) and volume is decreasing. Confirmation to buy if the next candle is bullish again or buy on support if it goes down first. We suggest being careful if it fails to stay above the support level. **(Trading Buy)**

TRADING STRATEGY:

1. Target Price: The price has a bullish opportunity to test the resistance level 222. If it breaks level 222 then the price will go to level 226. We recommend to be careful if the price fails to break through or turn around the support area.

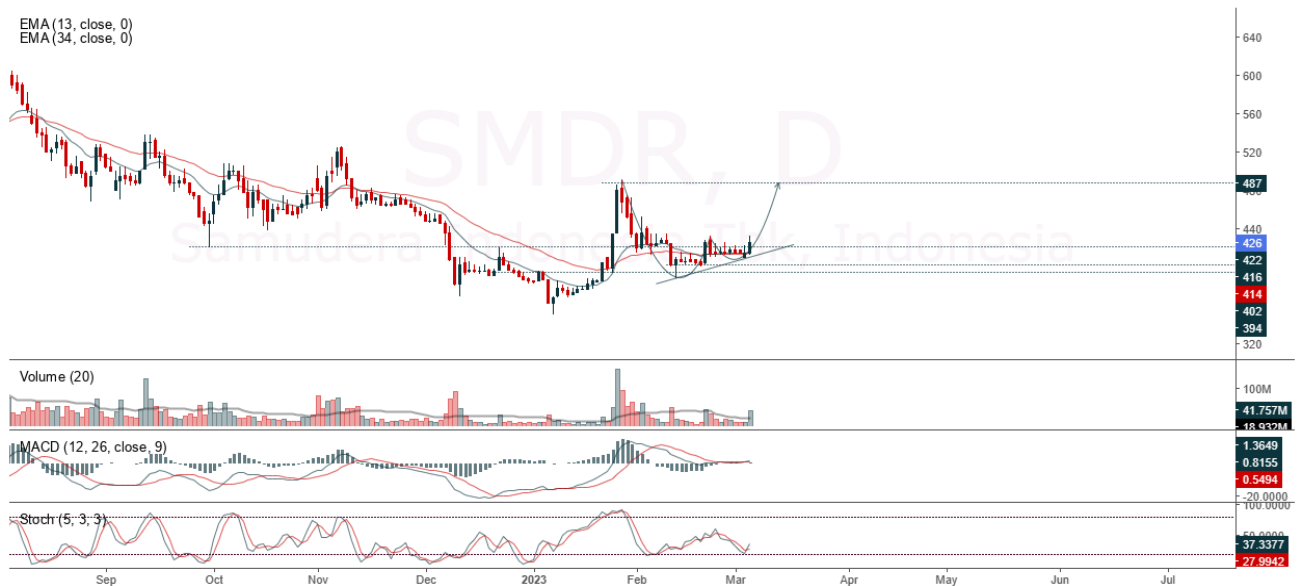
2. Stop Loss: To minimize the risk of loss, we recommend placing a stop loss at level 210.

Entry Buy : 214 – 218
Target Price : 222 – 226
Support : 212 – 214
Cutloss : 210

SMDR

Samudera Indonesia Tbk, Indonesia, Jakarta:SMDR, D

EMA (13, close, 0)
EMA (34, close, 0)



(SMDR) The price closed higher and is testing the nearest resistance. The price has the opportunity to strengthen again to the next resistance. Stochastic golden cross indicator, MACD histogram is moving in the positive direction (golden cross line) and volume is increasing. Confirmation to buy if the next candle is bullish again or buy on support if it goes down first. We suggest being careful if it fails to stay above the support level. **(Trading Buy)**

TRADING STRATEGY:

1. Target Price: The price has a bullish opportunity to test the resistance level 434. If it breaks level 434 then the price will go to level 442. We recommend to be careful if the price fails to break through or turn around the support area.

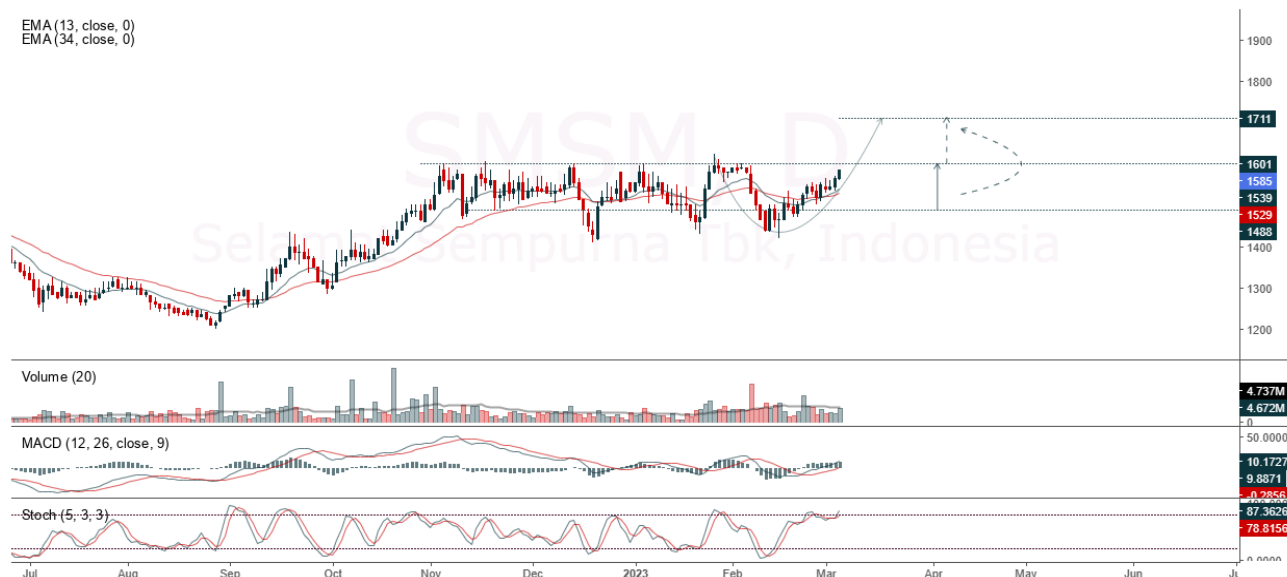
2. Stop Loss: To minimize the risk of loss, we recommend placing a stop loss at level 408.

Entry Buy : 416 – 426
Target Price : 434 – 442
Support : 410 – 416
Cutloss : 408

SMSM

Selamat Sempurna Tbk, Indonesia, Jakarta:SMSM, D

EMA (13, close, 0)
EMA (34, close, 0)



(SMSM) The price closed higher and in an uptrend. The price has the opportunity to strengthen again to the nearest resistance. Stochastic indicator is bullish, MACD histogram is moving positive (golden cross line) and volume is increasing. Confirmation to buy if the next candle is bullish again or buy on support if it goes down first. We suggest being careful if it fails to stay above the support level. **(Trading Buy)**

TRADING STRATEGY:

1.Target Price: The price has a bullish opportunity to test the resistance level 1,615. If it breaks level 1,615 then the price will go to level 1,625. We recommend to be careful if the price fails to break through or turn around the support area.

2. Stop Loss: To minimize the risk of loss, we recommend placing a stop loss at level 1,545.

Entry Buy : 1,565 – 1,585
 Target Price : 1,610 – 1,625
 Support : 1,550 – 1,565
 Cutloss : 1,545

Forecast – Technical Analysis

Ticker	MAS	RSI Rec	MACD Trend	Recomm.	Pivot Point	Support		Resistance		Stop Loss Level
						1	2	1	2	
JCI	Positif	Trading	Negatif	Hold	6,825	6,800	6,775	6,850	6,875	6,675
ADRO	Positif	Trading	Negatif	Hold	505	496	491	510	515	483
AMRT	Negatif	Trading	Positif	Hold	2,965	2,905	2,845	3,025	3,085	2,800
ANTM	Negatif	Trading	Positif	Hold	1,410	1,385	1,360	1,435	1,460	1,340
ARTO	Positif	Oversold	Negatif	Spec. Buy	2,820	2,775	2,750	2,845	2,890	2,705
ASII	Positif	Oversold	Negatif	Spec. Buy	1,985	1,950	1,920	2,015	2,050	1,890
BBCA	Negatif	Trading	Positif	Hold	2,780	2,730	2,690	2,820	2,870	2,650
BBNI	Negatif	OverBought	Positif	Sell	6,100	6,050	6,025	6,125	6,175	5,925
BBRI	Positif	Trading	Negatif	Hold	8,475	8,400	8,325	8,550	8,625	8,200
BBTN	Positif	Oversold	Negatif	Spec. Buy	8,800	8,750	8,675	8,875	8,925	8,550
BFIN	Positif	Trading	Negatif	Hold	4,790	4,780	4,770	4,800	4,810	4,700
BMRI	Positif	Trading	Negatif	Hold	1,300	1,275	1,260	1,315	1,340	1,240
BRIS	Positif	Trading	Negatif	Hold	10,150	10,075	10,000	10,225	10,300	9,850
BRPT	Negatif	Trading	Negatif	Sell	1,565	1,545	1,510	1,600	1,620	1,485
BUKA	Positif	Oversold	Negatif	Spec. Buy	810	800	785	825	835	775
CPIN	Negatif	Trading	Negatif	Sell	264	258	254	268	274	250
EMTK	Positif	Oversold	Negatif	Spec. Buy	5,275	5,200	5,125	5,350	5,425	5,050
ERAA	Positif	Oversold	Negatif	Spec. Buy	940	920	900	960	980	890
EXCL	Positif	Trading	Positif	Spec. Buy	995	965	930	1,030	1,060	915
GOTO	Positif	Oversold	Negatif	Spec. Buy	2,080	2,055	2,030	2,105	2,130	1,995
HMSP	Negatif	Trading	Positif	Hold	127	124	122	129	132	120
HRUM	Negatif	Trading	Positif	Hold	1,675	1,655	1,630	1,700	1,720	1,605
ICBP	Positif	Oversold	Negatif	Spec. Buy	9,750	9,650	9,600	9,800	9,900	9,450
INCO	Negatif	Trading	Positif	Hold	6,825	6,750	6,700	6,875	6,950	6,575
INDF	Positif	Oversold	Negatif	Spec. Buy	6,275	6,250	6,200	6,325	6,350	6,125
INDY	Negatif	Trading	Positif	Hold	2,315	2,275	2,225	2,365	2,405	2,190
INKP	Positif	Oversold	Negatif	Spec. Buy	7,850	7,800	7,725	7,925	7,975	7,625
INTP	Negatif	OverBought	Negatif	Strong Sell	11,425	11,225	11,100	11,550	11,750	10,925
ITMG	Negatif	OverBought	Positif	Sell	37,650	37,475	37,050	38,075	38,250	36,475
JPFA	Positif	Oversold	Negatif	Spec. Buy	1,265	1,240	1,210	1,295	1,320	1,190
KLBF	Positif	Trading	Negatif	Hold	2,095	2,070	2,045	2,120	2,145	2,015
MDKA	Negatif	Trading	Negatif	Sell	4,430	4,375	4,300	4,505	4,560	4,235
MEDC	Negatif	Trading	Negatif	Sell	1,100	1,060	1,025	1,135	1,175	1,005
MIKA	Negatif	Trading	Positif	Hold	1,595	1,580	1,565	1,610	1,625	1,540
MNCN	Negatif	OverBought	Positif	Sell	3,975	3,945	3,875	4,045	4,075	3,815
PGAS	Positif	Trading	Negatif	Hold	217	215	213	219	221	209
PTBA	Negatif	OverBought	Positif	Sell	895	890	880	905	910	865
SMGR	Positif	Trading	Negatif	Hold	7,200	7,100	7,000	7,300	7,400	6,900
TBIG	Negatif	Trading	Positif	Hold	2,260	2,220	2,190	2,290	2,330	2,155
TINS	Negatif	Trading	Positif	Hold	2,195	2,155	2,115	2,235	2,275	2,080
TLKM	Negatif	Trading	Positif	Hold	1,195	1,180	1,160	1,215	1,230	1,145
TOWR	Positif	Trading	Positif	Spec. Buy	3,910	3,870	3,830	3,950	3,990	3,775
TPIA	Positif	Oversold	Negatif	Spec. Buy	1,005	995	985	1,015	1,025	970
UNTR	Positif	Oversold	Negatif	Spec. Buy	2,250	2,220	2,180	2,290	2,320	2,145
UNVR	Negatif	OverBought	Positif	Sell	27,950	27,600	27,325	28,225	28,575	26,900
WIKA	Positif	Oversold	Negatif	Spec. Buy	4,130	4,065	4,010	4,185	4,250	3,945

OUR TEAM

Sukarno Alatas

Head of Equity Research

sukarno@kiwoom.co.id | 021 5010 5800

Michelle Abadi

Associate

michelle@kiwoom.co.id | 021 5010 5800

Abdul Azis Setyo Wibowo

Equity Research Analyst

azis@kiwoom.co.id | 021 5010 5800

Rizky Khaerunnisa

Equity Research Analyst

rizky@kiwoom.co.id | 021 5010 5800



OTHER DISCLOSURES

All Kiwoom's research reports made available to clients are simultaneously available on our own website <http://www.kiwoom.co.id/>. Not all research content is redistributed, e-mailed or made available to third-party aggregators. For all research reports available on a particular stock, please contact your sales representative. Any data discrepancies in this report could be the result of different calculations and/or adjustments.

DISCLAIMER This report has been prepared and issued by PT Kiwoom Sekuritas Indonesia. Information has been obtained from sources believed to be reliable but Kiwoom Securities do not warrant its completeness or accuracy. Forward-looking information or statements in this report contain information that is based on forecast of future results, estimates of amounts not yet determinable, assumptions, and therefore involve known and unknown risks and uncertainties which may cause the actual results, performance or achievements of their subject matter to be materially different from current expectations.

To the fullest extent allowed by law, PT Kiwoom Sekuritas Indonesia shall not be liable for any direct, indirect or consequential losses, loss of profits, damages, costs or expenses incurred or suffered by any person or organization arising from reliance on or use of any information contained on this report. The information that we provide should not be construed in any manner whatsoever as, personalized advice.

No mention of a particular security in this report constitutes a recommendation to buy, sell or hold that or any security, or that any particular security, portfolio of securities, transaction or investment strategy is suitable for any specific person. This report is being supplied to you solely for your information and may not be reproduced by, further distributed to or published in whole or in part by, any other person.