

JCI Range Today 6,711 – 6,721 (Support), 6,806 – 6,812 (Resistance)

Jakarta Stock Exchange Composite Index, Indonesia, Jakarta:JKSE, D

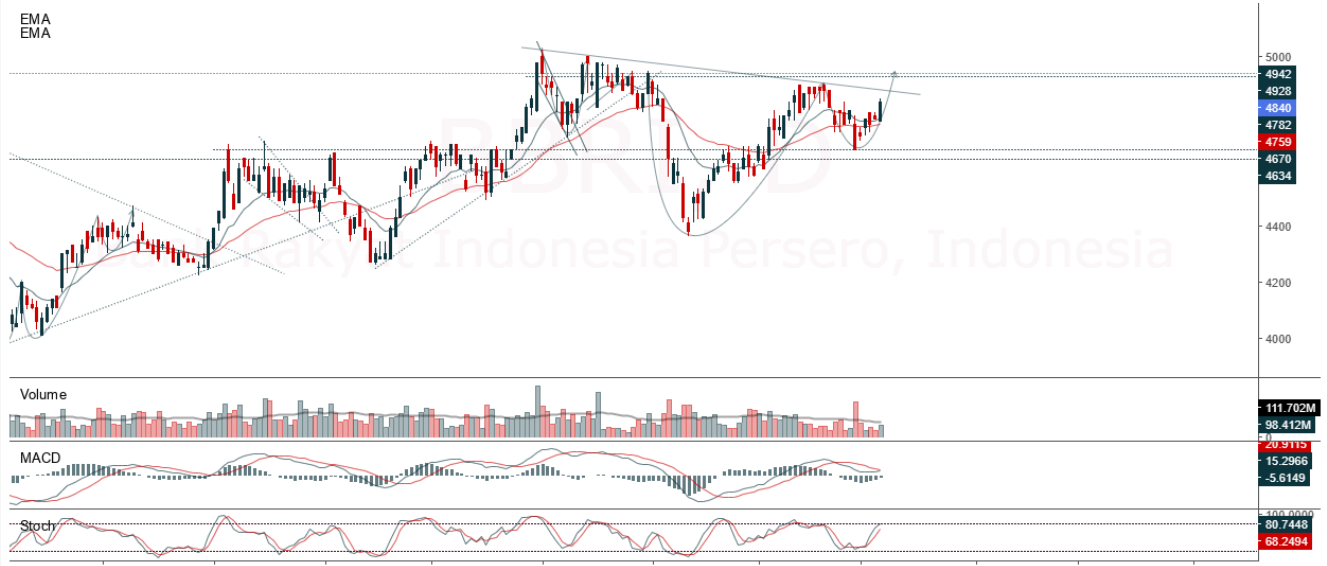
EMA (34, close, 0)
EMA (13, close, 0)



JCI closed lower and broke down below the support at 6,781. Stochastic indicator is bearish, MACD histogram is moving negative (bearish line) and volume is increasing. If it moves bearish, JCI is expected to weaken to the support range of 6,711 – 6,721. If JCI is able to move bullish, there is a chance for JCI to go to the resistance at the range of 6,806 – 6,812.

BBRI

Bank Rakyat Indonesia Persero, Indonesia, Jakarta:BBRI, D



(BBRI) The price closed higher with a bullish candle. The price has the opportunity to strengthen again to the nearest resistance. Stochastic indicator is bullish, MACD histogram is moving positive (bullish line) and volume is increasing slightly. Confirmation to buy if the next candle is bullish again or buy on support if it goes down first. We suggest being careful if it fails to stay above the support level. **(Trading Buy)**

TRADING STRATEGY:

1. Target Price: The price has a bullish opportunity to test the resistance level 4,920. If it breaks level 4,920 then the price will go to level 4,970. We recommend to be careful if the price fails to break through or turn around the support area.

2. Stop Loss: To minimize the risk of loss, we recommend placing a stop loss at level 4,720.

Entry Buy : 4,770 – 4,840
 Target Price : 4,920 – 4,970
 Support : 4,730 – 4,770
 Cutloss : 4,720

BRIS

Bank BRISyariah Tbk PT, Indonesia, Jakarta:BRIS, D

EMA (13, close, 0)
EMA (34, close, 0)



(BRIS) The price closed higher and formed a swing low. The price has the opportunity to strengthen again to the nearest resistance. Stochastic indicator is bullish, MACD histogram is moving in the positive direction (sloping line) and volume is increasing. Confirmation to buy if the next candle is bullish again or buy on support if it goes down first. We suggest being careful if it fails to stay above the support level. **(Trading Buy)**

TRADING STRATEGY:

1. Target Price: The price has a bullish opportunity to test the resistance level 1,625. If it breaks level 1,625 then the price will go to level 1,640. We recommend to be careful if the price fails to break through or turn around the support area.

2. Stop Loss: To minimize the risk of loss, we recommend placing a stop loss at level 1,550.

Entry Buy : 1,570 – 1,595
Target Price : 1,625 – 1,640
Support : 1,555 – 1,570
Cutloss : 1,550

MAPI

Mitra Adiperkasa Tbk, Indonesia, Jakarta:MAPI, D

EMA (13, close, 0)
EMA (34, close, 0)



(MAPI) The price closed higher and is still in an uptrend. The price has the opportunity to strengthen again to the nearest resistance. Stochastic indicator is bullish, MACD histogram is moving in the positive direction (golden cross line) and volume is neutral. Confirmation to buy if the next candle is bullish again or buy on support if it goes down first. We suggest being careful if it fails to stay above the support level. **(Trading Buy)**

TRADING STRATEGY:

1. Target Price: The price has a bullish opportunity to test the resistance level 1,635. If it breaks level 1,635 then the price will go to level 1,665. We recommend to be careful if the price fails to break through or turn around the support area.

2. Stop Loss: To minimize the risk of loss, we recommend placing a stop loss at level 1,550.

Entry Buy : 1,575 – 1,600
Target Price : 1,635 – 1,665
Support : 1,555 – 1,575
Cutloss : 1,550

MPMX

Mitra Pinasthika Mustika, Indonesia, Jakarta:MPMX, D

EMA (13, close, 0)
EMA (34, close, 0)



(MPMX) The price closed higher and in an uptrend. The price has the opportunity to strengthen again to the nearest resistance. Stochastic indicator is bullish, MACD histogram is moving positive (bullish line) and volume is increasing. Confirmation to buy if the next candle is bullish again or buy on support if it goes down first. We suggest being careful if it fails to stay above the support level. **(Trading Buy)**

TRADING STRATEGY:

- 1.Target Price: The price has a bullish opportunity to test the resistance level 1,290. If it breaks level 1,290 then the price will go to level 1,305. We recommend to be careful if the price fails to break through or turn around the support area.
2. Stop Loss: To minimize the risk of loss, we recommend placing a stop loss at level 1,215.

Entry Buy : 1,235 – 1,260
Target Price : 1,290 – 1,305
Support : 1,220 – 1,235
Cutloss : 1,215

Forecast – Technical Analysis

Ticker	MAS	RSI Rec	MACD Trend	Recomm.	Pivot Point	Support		Resistance		Stop Loss Level
						1	2	1	2	
JCI	Positif	Trading	Negatif	Hold	6,800	6,800	6,750	6,850	6,850	6,650
ACES	Positif	Trading	Negatif	Hold	505	496	491	510	515	483
ADRO	Negatif	Trading	Positif	Hold	2,960	2,900	2,840	3,020	3,080	2,795
AKRA	Negatif	Trading	Positif	Hold	1,410	1,385	1,360	1,435	1,460	1,340
AMRT	Positif	Oversold	Negatif	Spec. Buy	2,820	2,780	2,750	2,850	2,890	2,710
ANTM	Positif	Oversold	Negatif	Spec. Buy	1,980	1,935	1,915	2,000	2,045	1,885
ARTO	Negatif	Trading	Positif	Hold	2,760	2,690	2,670	2,780	2,850	2,630
ASII	Negatif	OverBought	Positif	Sell	6,050	6,000	5,975	6,075	6,125	5,900
BBCA	Positif	Trading	Negatif	Hold	8,500	8,425	8,350	8,575	8,650	8,200
BBNI	Positif	Oversold	Negatif	Spec. Buy	8,825	8,775	8,700	8,900	8,950	8,575
BBRI	Positif	Trading	Negatif	Hold	4,800	4,800	4,780	4,820	4,820	4,710
BBTN	Positif	Trading	Negatif	Hold	1,300	1,285	1,260	1,325	1,340	1,240
BMRI	Positif	Trading	Negatif	Hold	10,175	10,100	10,025	10,250	10,325	9,850
BRIS	Negatif	Trading	Negatif	Sell	1,575	1,565	1,520	1,620	1,630	1,495
BRPT	Positif	Oversold	Negatif	Spec. Buy	810	800	785	825	835	775
BUKA	Negatif	Trading	Negatif	Sell	265	259	255	269	275	251
CPIN	Positif	Oversold	Negatif	Spec. Buy	5,250	5,150	5,100	5,300	5,400	5,025
EMTK	Positif	Oversold	Negatif	Spec. Buy	935	900	895	940	975	880
ESSA	Positif	Trading	Positif	Spec. Buy	995	965	930	1,030	1,060	915
EXCL	Positif	Oversold	Negatif	Spec. Buy	2,080	2,055	2,030	2,105	2,130	1,995
GOTO	Negatif	Trading	Positif	Hold	127	125	122	130	132	120
HRUM	Negatif	Trading	Positif	Hold	1,670	1,645	1,625	1,690	1,715	1,600
ICBP	Positif	Oversold	Negatif	Spec. Buy	9,825	9,825	9,675	9,975	9,975	9,525
INCO	Negatif	Trading	Positif	Hold	6,775	6,650	6,650	6,775	6,900	6,550
INDF	Positif	Oversold	Negatif	Spec. Buy	6,300	6,250	6,225	6,325	6,375	6,125
INDY	Negatif	Trading	Positif	Hold	2,310	2,265	2,220	2,355	2,400	2,185
INKP	Positif	Oversold	Negatif	Spec. Buy	7,850	7,750	7,725	7,875	7,975	7,600
INTP	Negatif	OverBought	Negatif	Strong Sell	11,400	11,175	11,075	11,500	11,725	10,900
ITMG	Negatif	OverBought	Positif	Sell	37,525	37,250	36,925	37,850	38,125	36,375
JPFA	Positif	Oversold	Negatif	Spec. Buy	1,265	1,245	1,210	1,300	1,320	1,190
KLBF	Positif	Trading	Negatif	Hold	2,085	2,045	2,035	2,095	2,135	2,000
MDKA	Negatif	Trading	Negatif	Sell	4,420	4,355	4,290	4,485	4,550	4,225
MEDC	Negatif	Trading	Negatif	Sell	1,095	1,060	1,020	1,135	1,170	1,005
PGAS	Negatif	Trading	Positif	Hold	1,590	1,565	1,560	1,595	1,620	1,535
PTBA	Negatif	OverBought	Positif	Sell	3,960	3,915	3,860	4,015	4,060	3,800
SCMA	Positif	Trading	Negatif	Hold	217	215	213	219	221	209
SIDO	Negatif	OverBought	Positif	Sell	895	890	880	905	910	865
SMGR	Positif	Trading	Negatif	Hold	7,175	7,050	6,975	7,250	7,375	6,875
SRTG	Negatif	Trading	Positif	Hold	2,260	2,220	2,190	2,290	2,330	2,155
TBIG	Negatif	Trading	Positif	Hold	2,180	2,130	2,100	2,210	2,260	2,070
TINS	Negatif	Trading	Positif	Hold	1,195	1,175	1,160	1,210	1,230	1,145
TLKM	Positif	Trading	Positif	Spec. Buy	3,910	3,865	3,830	3,945	3,990	3,770
TOWR	Positif	Oversold	Negatif	Spec. Buy	1,000	985	980	1,005	1,020	965
TPIA	Positif	Oversold	Negatif	Spec. Buy	2,255	2,230	2,185	2,300	2,325	2,150
UNTR	Negatif	OverBought	Positif	Sell	27,800	27,325	27,175	27,950	28,425	26,750
UNVR	Positif	Oversold	Negatif	Spec. Buy	4,115	4,035	3,995	4,155	4,235	3,935

OUR TEAM

Sukarno Alatas

Head of Equity Research

sukarno@kiwoom.co.id | 021 5010 5800**Michelle Abadi**

Associate

michelle@kiwoom.co.id | 021 5010 5800**Abdul Azis Setyo Wibowo**

Equity Research Analyst

azis@kiwoom.co.id | 021 5010 5800**Rizky Khaerunnisa**

Equity Research Analyst

rizky@kiwoom.co.id | 021 5010 5800**OTHER DISCLOSURES**

All Kiwoom's research reports made available to clients are simultaneously available on our own website <http://www.kiwoom.co.id/>. Not all research content is redistributed, e-mailed or made available to third-party aggregators. For all research reports available on a particular stock, please contact your sales representative. Any data discrepancies in this report could be the result of different calculations and/or adjustments.

DISCLAIMER This report has been prepared and issued by PT Kiwoom Sekuritas Indonesia. Information has been obtained from sources believed to be reliable but Kiwoom Securities do not warrant its completeness or accuracy. Forward-looking information or statements in this report contain information that is based on forecast of future results, estimates of amounts not yet determinable, assumptions, and therefore involve known and unknown risks and uncertainties which may cause the actual results, performance or achievements of their subject matter to be materially different from current expectations.

To the fullest extent allowed by law, PT Kiwoom Sekuritas Indonesia shall not be liable for any direct, indirect or consequential losses, loss of profits, damages, costs or expenses incurred or suffered by any person or organization arising from reliance on or use of any information contained on this report. The information that we provide should not be construed in any manner whatsoever as, personalized advice.

No mention of a particular security in this report constitutes a recommendation to buy, sell or hold that or any security, or that any particular security, portfolio of securities, transaction or investment strategy is suitable for any specific person. This report is being supplied to you solely for your information and may not be reproduced by, further distributed to or published in whole or in part by, any other person.