

JCI Range Today 6,695 – 6,728 (Support), 6,799 – 6,819 (Resistance)

Jakarta Stock Exchange Composite Index, Indonesia, Jakarta:JKSE, D

EMA (34, close, 0)
EMA (13, close, 0)

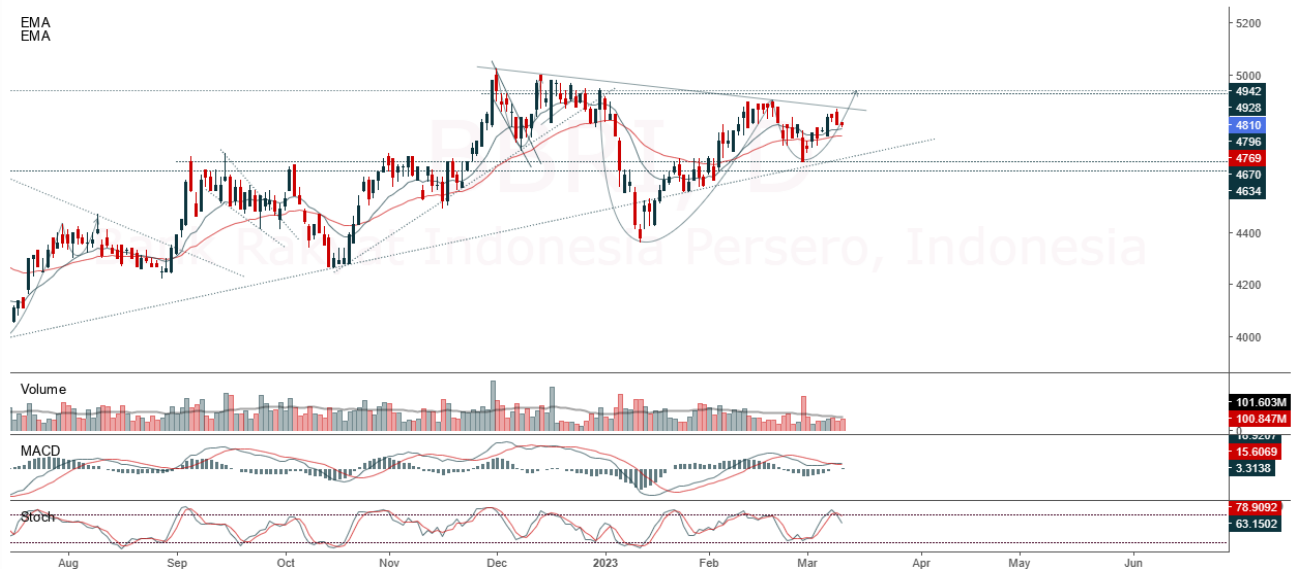


JCI closed down with a bearish candle. The stochastic indicator is sloping, MACD histogram is negative (bearish line) and volume is increasing. If it moves bearish, JCI is expected to weaken to the support range of 6,695 – 6,728. If JCI is able to move bullish, there is a chance for JCI to go to the resistance at the range of 6,799 – 6,819.

BBRI

Bank Rakyat Indonesia Persero, Indonesia, Jakarta:BBRI, D

EMA
EMA



(BBRI) The price closed higher with a doji candle. The price has the opportunity to strengthen again to the nearest resistance. Stochastic indicator is bearish, MACD histogram is moving in the positive direction (golden cross line) and volume is increasing. Confirmation to buy if the next candle is bullish again or buy on support if it goes down first. We suggest being careful if it fails to stay above the support level. **(Trading Buy)**

TRADING STRATEGY:

1. Target Price: The price has a bullish opportunity to test the resistance level 4,890. If it breaks level 4,890 then the price will go to level 4,920. We recommend to be careful if the price fails to break through or turn around the support area.

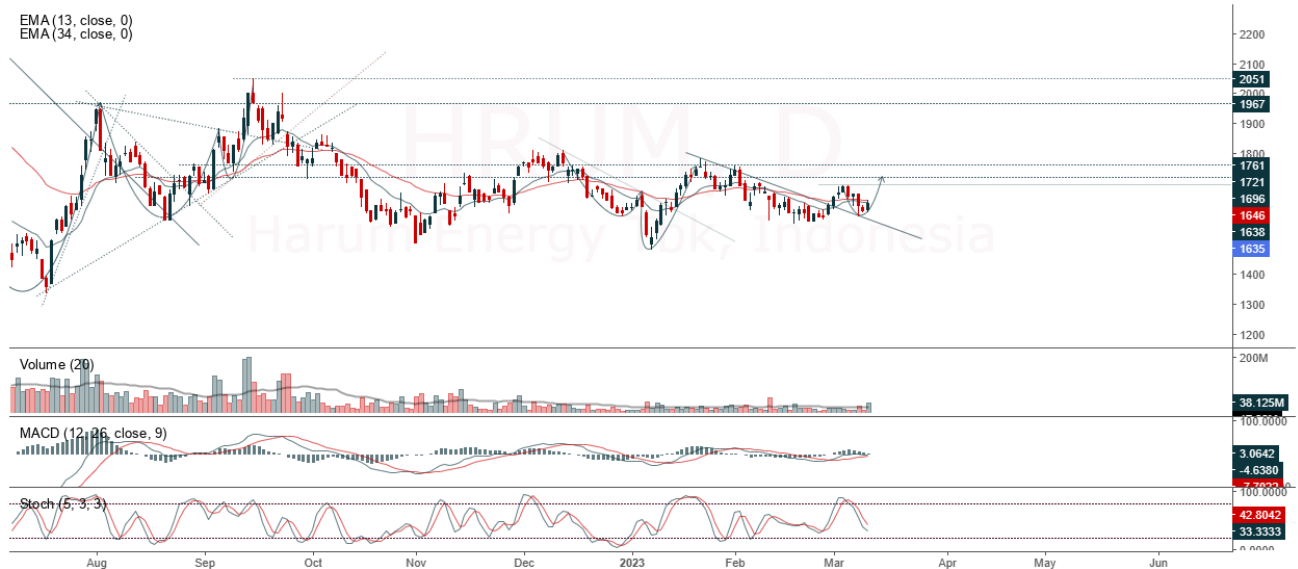
2. Stop Loss: To minimize the risk of loss, we recommend placing a stop loss at level 4,720.

Entry Buy : 4,770 – 4,820
 Target Price : 4,890 – 4,920
 Support : 4,730 – 4,770
 Cutloss : 4,720

HRUM

Harum Energy Tbk, Indonesia, Jakarta:HRUM, D

EMA (13, close, 0)
EMA (34, close, 0)



(HRUM) The price closed higher with a bullish candle. The price has the opportunity to strengthen again to the nearest resistance. The stochastic indicator has a potential golden cross, MACD histogram is moving positive (bullish line) and volume is increasing. Confirmation to buy if the next candle is bullish again or buy on support if it goes down first. We suggest being careful if it fails to stay above the support level. **(Trading Buy)**

TRADING STRATEGY:

1. Target Price: The price has a bullish opportunity to test the resistance level 1,670. If it breaks level 1,670 then the price will go to level 1,690. We recommend to be careful if the price fails to break through or turn around the support area.

2. Stop Loss: To minimize the risk of loss, we recommend placing a stop loss at level 1,585.

Entry Buy : 1,605 – 1,635
Target Price : 1,670 – 1,690
Support : 1,590 – 1,605
Cutloss : 1,585

IMAS

Indomobil Sukses Internasional, Indonesia, Jakarta:IMAS, D

EMA (13, close, 0)
EMA (34, close, 0)



(IMAS) The price closed higher and formed a swing low. The price has the opportunity to strengthen again to the nearest resistance. The stochastic indicator is bullish, MACD histogram is moving in the positive direction (bearish line) and volume is increasing slightly. Confirmation to buy if the next candle is bullish again or buy on support if it goes down first. We suggest being careful if it fails to stay above the support level. **(Trading Buy)**

TRADING STRATEGY:

1. Target Price: The price has a bullish opportunity to test the resistance level 1,060. If it breaks level 1,060 then the price will go to level 1,090. We recommend to be careful if the price fails to break through or turn around the support area.

2. Stop Loss: To minimize the risk of loss, we recommend placing a stop loss at level 1,000.

Entry Buy : 1,020 – 1,035
Target Price : 1,060 – 1,090
Support : 1,005 – 1,020
Cutloss : 1,000

INTP

Indocement Tunggak Prakarsa, Indonesia, Jakarta:INTP, D

EMA (13, close, 0)
EMA (34, close, 0)



(INTP) The price closed stagnant with a bullish candle. The price has the opportunity to strengthen again to the nearest resistance. Stochastic indicator is bullish, MACD histogram is moving in the positive direction (bullish line) and volume is neutral. Confirmation to buy if the next candle is bullish again or buy on support if it goes down first. We suggest being careful if it fails to stay above the support level. **(Trading Buy)**

TRADING STRATEGY:

1. Target Price: The price has a bullish opportunity to test the resistance level 11,700. If it breaks level 11,700 then the price will go to level 11,850. We recommend to be careful if the price fails to break through or turn around the support area.
2. Stop Loss: To minimize the risk of loss, we recommend placing a stop loss at level 11,175.

Entry Buy : 11,275 – 11,475
 Target Price : 11,700 – 11,850
 Support : 11,200 – 11,275
 Cutloss : 11,175

Forecast – Technical Analysis

Ticker	MAS	RSI Rec	MACD Trend	Recomm.	Pivot Point	Support		Resistance		Stop Loss Level
						1	2	1	2	
JCI	Positif	Trading	Negatif	Hold	6,775	6,750	6,725	6,800	6,825	6,625
ACES	Negatif	Trading	Negatif	Sell	499	494	486	505	510	479
ADRO	Positif	Trading	Positif	Spec. Buy	2,880	2,855	2,830	2,905	2,930	2,785
AKRA	Positif	Trading	Positif	Spec. Buy	1,385	1,370	1,340	1,415	1,430	1,320
AMRT	Negatif	Trading	Negatif	Sell	2,830	2,780	2,740	2,870	2,920	2,700
ANTM	Positif	Oversold	Negatif	Spec. Buy	1,875	1,850	1,830	1,895	1,920	1,800
ARTO	Positif	Trading	Positif	Spec. Buy	2,630	2,580	2,490	2,720	2,770	2,455
ASII	Positif	Trading	Positif	Spec. Buy	5,975	5,925	5,875	6,025	6,075	5,775
BBCA	Negatif	Trading	Negatif	Sell	8,500	8,425	8,400	8,525	8,600	8,250
BBNI	Negatif	Trading	Positif	Hold	9,075	9,000	8,950	9,125	9,200	8,800
BBRI	Negatif	Trading	Negatif	Sell	4,820	4,805	4,790	4,835	4,850	4,715
BBTN	Positif	Oversold	Negatif	Spec. Buy	1,275	1,270	1,255	1,290	1,295	1,235
BMRI	Negatif	OverBought	Positif	Sell	10,375	10,325	10,225	10,475	10,525	10,075
BRIS	Negatif	Trading	Negatif	Sell	1,575	1,560	1,540	1,595	1,610	1,515
BRPT	Positif	Oversold	Negatif	Spec. Buy	785	780	770	795	800	760
BUKA	Positif	Trading	Negatif	Hold	260	257	252	265	268	248
CPIN	Positif	Oversold	Negatif	Spec. Buy	5,000	4,950	4,890	5,050	5,100	4,815
EMTK	Positif	Oversold	Negatif	Spec. Buy	870	855	840	885	900	825
ESSA	Positif	Trading	Negatif	Hold	990	975	960	1,005	1,020	945
EXCL	Positif	Oversold	Negatif	Spec. Buy	2,060	2,040	2,010	2,090	2,110	1,980
GOTO	Negatif	OverBought	Positif	Sell	126	124	120	130	132	118
HRUM	Positif	Trading	Positif	Spec. Buy	1,625	1,605	1,585	1,645	1,665	1,560
ICBP	Negatif	Oversold	Negatif	Specu. Buy	9,800	9,600	9,450	9,950	10,150	9,300
INCO	Positif	Oversold	Negatif	Spec. Buy	6,350	6,275	6,175	6,450	6,525	6,075
INDF	Positif	Oversold	Negatif	Spec. Buy	6,150	6,100	6,050	6,200	6,250	5,950
INDY	Positif	Oversold	Positif	Buy	2,200	2,170	2,150	2,220	2,250	2,120
INKP	Positif	Oversold	Negatif	Spec. Buy	7,500	7,375	7,275	7,600	7,725	7,150
INTP	Positif	OverBought	Negatif	Sell	11,425	11,375	11,275	11,525	11,575	11,100
ITMG	Positif	OverBought	Positif	Hold	38,150	37,975	37,750	38,375	38,550	37,175
JPFA	Positif	Oversold	Negatif	Spec. Buy	1,225	1,215	1,205	1,235	1,245	1,185
KLBF	Negatif	Trading	Negatif	Sell	2,070	2,050	2,030	2,090	2,110	2,000
MDKA	Positif	Oversold	Negatif	Spec. Buy	4,090	4,040	3,990	4,140	4,190	3,930
MEDC	Positif	Oversold	Negatif	Spec. Buy	1,015	1,000	980	1,035	1,050	965
PGAS	Positif	Trading	Positif	Spec. Buy	1,550	1,540	1,525	1,565	1,575	1,500
PTBA	Positif	OverBought	Positif	Hold	3,915	3,885	3,855	3,945	3,975	3,795
SCMA	Negatif	Trading	Negatif	Sell	214	212	210	216	218	207
SIDO	Positif	OverBought	Negatif	Sell	885	870	840	915	930	825
SMGR	Positif	Oversold	Negatif	Spec. Buy	6,850	6,750	6,650	6,950	7,050	6,550
SRTG	Positif	Trading	Negatif	Hold	2,210	2,180	2,140	2,250	2,280	2,110
TBIG	Positif	Trading	Positif	Spec. Buy	2,180	2,145	2,120	2,205	2,240	2,085
TINS	Positif	Oversold	Negatif	Spec. Buy	1,145	1,135	1,120	1,160	1,170	1,100
TLKM	Negatif	Trading	Positif	Hold	3,980	3,940	3,890	4,030	4,070	3,830
TOWR	Positif	Oversold	Negatif	Spec. Buy	980	960	945	995	1,015	930
TPIA	Positif	Oversold	Negatif	Spec. Buy	2,275	2,190	2,095	2,370	2,455	2,065
UNTR	Positif	Trading	Positif	Spec. Buy	26,900	26,650	26,350	27,200	27,450	25,950
UNVR	Negatif	Oversold	Negatif	Specu. Buy	4,110	4,075	4,050	4,135	4,170	3,985

OUR TEAM

Sukarno Alatas

Head of Equity Research

sukarno@kiwoom.co.id | 021 5010 5800**Michelle Abadi**

Associate

michelle@kiwoom.co.id | 021 5010 5800**Abdul Azis Setyo Wibowo**

Equity Research Analyst

azis@kiwoom.co.id | 021 5010 5800**Rizky Khaerunnisa**

Equity Research Analyst

rizky@kiwoom.co.id | 021 5010 5800**OTHER DISCLOSURES**

All Kiwoom's research reports made available to clients are simultaneously available on our own website <http://www.kiwoom.co.id/>. Not all research content is redistributed, e-mailed or made available to third-party aggregators. For all research reports available on a particular stock, please contact your sales representative. Any data discrepancies in this report could be the result of different calculations and/or adjustments.

DISCLAIMER This report has been prepared and issued by PT Kiwoom Sekuritas Indonesia. Information has been obtained from sources believed to be reliable but Kiwoom Securities do not warrant its completeness or accuracy. Forward-looking information or statements in this report contain information that is based on forecast of future results, estimates of amounts not yet determinable, assumptions, and therefore involve known and unknown risks and uncertainties which may cause the actual results, performance or achievements of their subject matter to be materially different from current expectations.

To the fullest extent allowed by law, PT Kiwoom Sekuritas Indonesia shall not be liable for any direct, indirect or consequential losses, loss of profits, damages, costs or expenses incurred or suffered by any person or organization arising from reliance on or use of any information contained on this report. The information that we provide should not be construed in any manner whatsoever as, personalized advice.

No mention of a particular security in this report constitutes a recommendation to buy, sell or hold that or any security, or that any particular security, portfolio of securities, transaction or investment strategy is suitable for any specific person. This report is being supplied to you solely for your information and may not be reproduced by, further distributed to or published in whole or in part by, any other person.