

**JCI Range Today 6,630 – 6,641 (Support), 6,728 – 6,741 (Resistance)**

Jakarta Stock Exchange Composite Index, Indonesia, Jakarta:JKSE, D

EMA (34, close, 0)  
EMA (13, close, 0)



JCI managed to close significantly higher after touching support. The stochastic golden cross indicator, MACD histogram is moving negative (bearish line) and volume has increased significantly. If it moves bearish, JCI is expected to weaken to the support range of 6,630 – 6,641. If JCI is able to move bullish, there is a chance for JCI to go to the resistance at the range of 6,728 – 6,741.

**ANTM**

Aneka Tambang Persero Tbk, Indonesia, Jakarta:ANTM, D



**(ANTM)** The price closed higher by forming a swing low. The price has the opportunity to strengthen again to the nearest resistance. Stochastic indicator is bullish, MACD histogram is moving in the positive direction (potential for golden cross line) and volume is increasing slightly. Confirmation to buy if the next candle is bullish again or buy on support if it goes down first. We suggest being careful if it fails to stay above the support level. **(Trading Buy)**

**TRADING STRATEGY:**

1. Target Price: The price has a bullish opportunity to test the resistance level 1,930. If it breaks level 1,930 then the price will go to level 1,955. We recommend to be careful if the price fails to break through or turn around the support area.

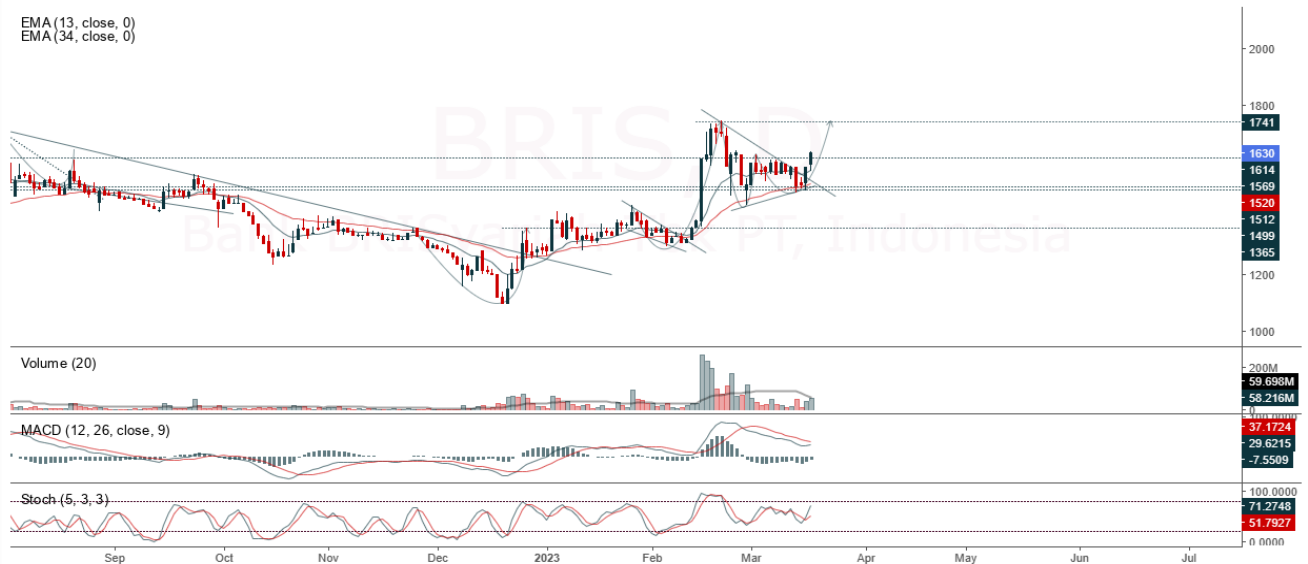
2. Stop Loss: To minimize the risk of loss, we recommend placing a stop loss at level 1,845.

Entry Buy : 1,865 – 1,895  
Target Price : 1,930 – 1,955  
Support : 1,850 – 1,865  
Cutloss : 1,845

**BRIS**

Bank BRISyariah Tbk PT, Indonesia, Jakarta:BRIS, D

EMA (13, close, 0)  
EMA (34, close, 0)



**(BRIS)** The price closed higher with a bullish candle. The price has the opportunity to strengthen again for testing the nearest resistance. Stochastic indicator is bullish, MACD histogram is moving in the positive direction (bearish line) and volume is increasing. Confirmation to buy if the next candle is bullish again or buy on support if it goes down first. We suggest being careful if it fails to stay above the support level. **(Trading Buy)**

**TRADING STRATEGY:**

1. Target Price: The price has a bullish opportunity to test the resistance level 1,670. If it breaks level 1,670 then the price will go to level 1,690. We recommend to be careful if the price fails to break through or turn around the support area.

2. Stop Loss: To minimize the risk of loss, we recommend placing a stop loss at level 1,575.

Entry Buy : 1,600 – 1,630  
Target Price : 1,670 – 1,690  
Support : 1,580 – 1,600  
Cutloss : 1,575

**JSMR**

Jasa Marga Tbk, Indonesia, Jakarta: JSMR, D

EMA (13, close, 0)  
EMA (34, close, 0)



**(JSMR)** The price closed higher with a bullish candle. The price has the opportunity to strengthen again to the nearest resistance. Stochastic golden cross indicator, MACD histogram is moving in the positive direction (bearish line) and neutral volume. Confirmation to buy if the next candle is bullish again or buy on support if it goes down first. We suggest being careful if it fails to stay above the support level. **(Trading Buy)**

**TRADING STRATEGY:**

1. Target Price: The price has a bullish opportunity to test the resistance level 3,220. If it breaks level 3,220 then the price will go to level 3,250. We recommend to be careful if the price fails to break through or turn around the support area.

2. Stop Loss: To minimize the risk of loss, we recommend placing a stop loss at level 3,060.

Entry Buy : 3,090 – 3,150  
Target Price : 3,220 – 3,250  
Support : 3,070 – 3,090  
Cutloss : 3,060

## UNVR

Unilever Indonesia Tbk, Indonesia, Jakarta:UNVR, D

EMA (13, close, 0)  
EMA (34, close, 0)



**(UNVR)** The price closed higher with a bullish candle. The price has the opportunity to strengthen again to the nearest resistance. Stochastic indicator is bullish, MACD histogram is moving positive again (bullish line) and volume is increasing. Confirmation to buy if the next candle is bullish again or buy on support if it goes down first. We suggest being careful if it fails to stay above the support level. **(Trading Buy)**

### TRADING STRATEGY:

1. Target Price: The price has a bullish opportunity to test the resistance level 4,230. If it breaks level 4,230 then the price will go to level 4,280. We recommend to be careful if the price fails to break through or turn around the support area.
2. Stop Loss: To minimize the risk of loss, we recommend placing a stop loss at level 4,070.

Entry Buy : 4,110 – 4,160  
Target Price : 4,230 – 4,280  
Support : 4,080 – 4,110  
Cutloss : 4,070

**Forecast – Technical Analysis**

Ticker	MA5	RSI Rec	MACD Trend	Recomm.	Pivot Point	Support		Resistance		Stop Loss Level
						1	2	1	2	
JCI	Positif	Oversold	Negatif	Spec. Buy	6,650	6,600	6,550	6,675	6,725	6,450
ACES	Positif	Oversold	Negatif	Spec. Buy	445	436	433	448	457	427
ADRO	Positif	Oversold	Negatif	Spec. Buy	2,715	2,650	2,585	2,780	2,845	2,545
AKRA	Negatif	Trading	Negatif	Sell	1,370	1,345	1,320	1,395	1,420	1,300
AMRT	Negatif	Trading	Negatif	Sell	2,850	2,780	2,740	2,890	2,960	2,700
ANTM	Positif	Oversold	Negatif	Spec. Buy	1,855	1,815	1,770	1,900	1,940	1,740
ARTO	Positif	Oversold	Negatif	Spec. Buy	2,220	2,170	2,110	2,280	2,330	2,080
ASII	Positif	Trading	Negatif	Hold	5,875	5,825	5,800	5,900	5,950	5,725
BBCA	Positif	Oversold	Negatif	Spec. Buy	8,375	8,325	8,250	8,450	8,500	8,125
BBNI	Positif	Trading	Positif	Spec. Buy	9,050	8,925	8,875	9,100	9,225	8,725
BBRI	Positif	Trading	Negatif	Hold	4,830	4,760	4,680	4,910	4,980	4,610
BBTN	Positif	Oversold	Negatif	Spec. Buy	1,215	1,190	1,160	1,245	1,270	1,145
BMRI	Positif	Trading	Negatif	Hold	10,025	9,925	9,825	10,125	10,225	9,675
BRIS	Negatif	Trading	Negatif	Sell	1,605	1,575	1,535	1,645	1,675	1,510
BRPT	Positif	Oversold	Negatif	Spec. Buy	770	760	750	780	790	740
BUKA	Positif	Oversold	Negatif	Spec. Buy	234	224	214	244	254	211
CPIN	Positif	Oversold	Negatif	Spec. Buy	4,970	4,635	4,470	5,125	5,475	4,400
EMTK	Positif	Strong Buy	Negatif	Buy	765	740	720	785	810	710
ESSA	Positif	Trading	Negatif	Hold	950	940	910	980	990	900
EXCL	Positif	Oversold	Negatif	Spec. Buy	1,945	1,835	1,780	2,000	2,110	1,750
GOTO	Positif	Trading	Negatif	Hold	117	114	109	122	125	108
HRUM	Positif	Oversold	Negatif	Spec. Buy	1,450	1,430	1,415	1,465	1,485	1,390
ICBP	Positif	Oversold	Negatif	Spec. Buy	9,600	9,375	9,300	9,675	9,900	9,150
INCO	Positif	Oversold	Negatif	Spec. Buy	6,300	6,200	6,100	6,400	6,500	6,000
INDF	Negatif	Oversold	Negatif	Specu. Buy	6,150	6,075	6,025	6,200	6,275	5,925
INDY	Positif	Oversold	Negatif	Spec. Buy	2,060	2,020	1,980	2,100	2,140	1,950
INKP	Positif	Strong Buy	Negatif	Buy	6,925	6,800	6,775	6,950	7,075	6,650
INTP	Positif	Oversold	Negatif	Spec. Buy	9,925	9,650	9,450	10,125	10,400	9,300
ITMG	Negatif	Trading	Positif	Hold	38,225	37,200	36,175	39,250	40,275	35,625
JPFA	Positif	Strong Buy	Negatif	Buy	1,110	1,070	1,040	1,140	1,180	1,020
KLBF	Negatif	Trading	Negatif	Sell	2,185	2,150	2,115	2,220	2,255	2,085
MDKA	Positif	Oversold	Negatif	Spec. Buy	3,855	3,800	3,715	3,940	3,995	3,660
MEDC	Positif	Oversold	Negatif	Spec. Buy	895	870	845	920	945	830
PGAS	Positif	Oversold	Negatif	Spec. Buy	1,375	1,360	1,340	1,395	1,410	1,320
PTBA	Positif	Trading	Negatif	Hold	3,770	3,660	3,550	3,880	3,990	3,495
SCMA	Positif	Oversold	Negatif	Spec. Buy	183	179	176	186	190	173
SIDO	Positif	Trading	Negatif	Hold	835	820	815	840	855	800
SMGR	Positif	Strong Buy	Negatif	Buy	6,050	5,975	5,900	6,125	6,200	5,800
SRTG	Positif	Oversold	Negatif	Spec. Buy	1,975	1,910	1,845	2,040	2,105	1,815
TBIG	Positif	Trading	Positif	Spec. Buy	2,130	2,085	2,060	2,155	2,200	2,025
TINS	Positif	Strong Buy	Negatif	Buy	965	940	915	990	1,015	900
TLKM	Negatif	OverBought	Positif	Sell	4,070	4,035	4,000	4,105	4,140	3,940
TOWR	Positif	Strong Buy	Negatif	Buy	925	905	885	945	965	875
TPIA	Positif	Trading	Negatif	Hold	2,245	2,220	2,185	2,280	2,305	2,150
UNTR	Negatif	Trading	Positif	Hold	27,725	27,000	26,275	28,450	29,175	25,875
UNVR	Negatif	Oversold	Positif	Spec. Buy	4,120	4,065	4,020	4,165	4,220	3,955

## OUR TEAM

**Sukarno Alatas**

Head of Equity Research

[sukarno@kiwoom.co.id](mailto:sukarno@kiwoom.co.id) | 021 5010 5800**Michelle Abadi**

Associate

[michelle@kiwoom.co.id](mailto:michelle@kiwoom.co.id) | 021 5010 5800**Abdul Azis Setyo Wibowo**

Equity Research Analyst

[azis@kiwoom.co.id](mailto:azis@kiwoom.co.id) | 021 5010 5800**Rizky Khaerunnisa**

Equity Research Analyst

[rizky@kiwoom.co.id](mailto:rizky@kiwoom.co.id) | 021 5010 5800**OTHER DISCLOSURES**

All Kiwoom's research reports made available to clients are simultaneously available on our own website <http://www.kiwoom.co.id/>. Not all research content is redistributed, e-mailed or made available to third-party aggregators. For all research reports available on a particular stock, please contact your sales representative. Any data discrepancies in this report could be the result of different calculations and/or adjustments.

**DISCLAIMER** This report has been prepared and issued by PT Kiwoom Sekuritas Indonesia. Information has been obtained from sources believed to be reliable but Kiwoom Securities do not warrant its completeness or accuracy. Forward-looking information or statements in this report contain information that is based on forecast of future results, estimates of amounts not yet determinable, assumptions, and therefore involve known and unknown risks and uncertainties which may cause the actual results, performance or achievements of their subject matter to be materially different from current expectations.

To the fullest extent allowed by law, PT Kiwoom Sekuritas Indonesia shall not be liable for any direct, indirect or consequential losses, loss of profits, damages, costs or expenses incurred or suffered by any person or organization arising from reliance on or use of any information contained on this report. The information that we provide should not be construed in any manner whatsoever as, personalized advice.

No mention of a particular security in this report constitutes a recommendation to buy, sell or hold that or any security, or that any particular security, portfolio of securities, transaction or investment strategy is suitable for any specific person. This report is being supplied to you solely for your information and may not be reproduced by, further distributed to or published in whole or in part by, any other person.