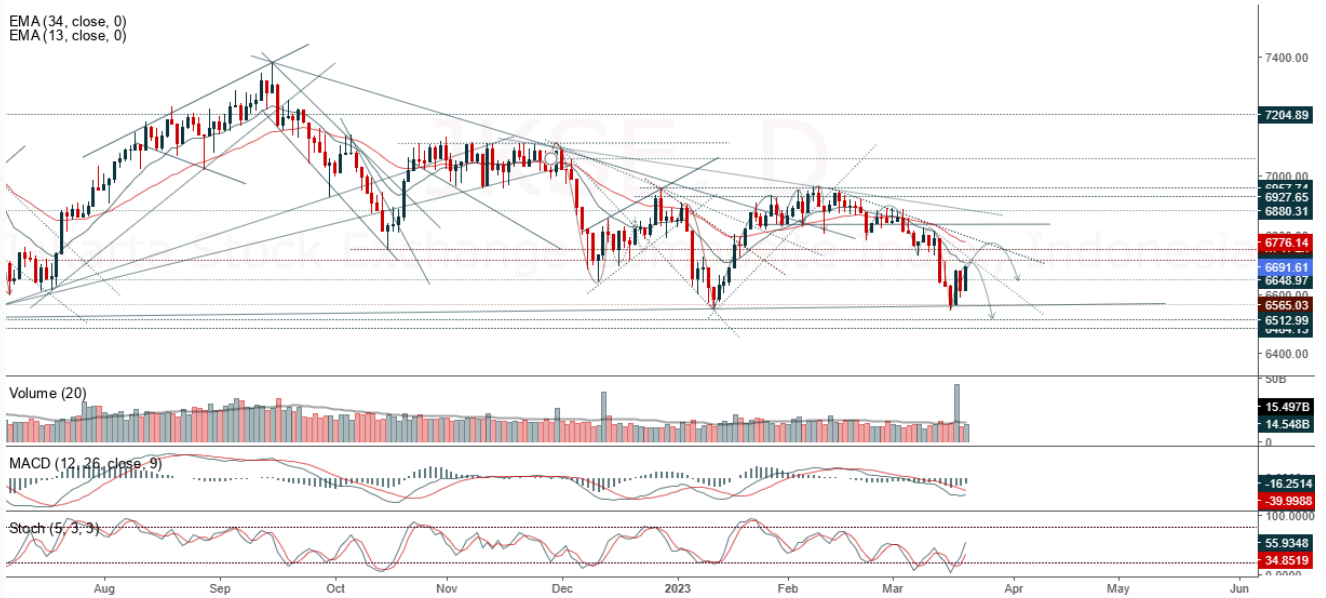


JCI Range Today 6,628 – 6,635 (Support), 6,741 – 6,758 (Resistance)

Jakarta Stock Exchange Composite Index, Indonesia, Jakarta:JKSE, D

EMA (34, close, 0)
EMA (13, close, 0)



JCI managed to close higher with a bullish candle. Stochastic indicator is bullish, MACD histogram is moving in the positive direction (bearish line) and volume is increasing. If it moves bearish, JCI is expected to weaken to the support range of 6,628 – 6,635. If JCI is able to move bullish, there is a chance for JCI to go to the resistance at the range of 6,741 – 6,758.

BBNI

Bank Negara Indonesia Tbk, Indonesia, Jakarta:BBNI, D

EMA (13, close, 0)
EMA (34, close, 0)



(BBNI) The price closed higher with a bullish candle. The price has the opportunity to strengthen again to the nearest resistance. Stochastic indicator is bullish, MACD histogram is moving in the positive direction (flat line) and volume is neutral. Confirmation to buy if the next candle is bullish again or buy on support if it goes down first. We suggest being careful if it fails to stay above the support level. **(Trading Buy)**

TRADING STRATEGY:

1. Target Price: The price has a bullish opportunity to test the resistance level 9,375. If it breaks level 9,375 then the price will go to level 9,450. We recommend to be careful if the price fails to break through or turn around the support area.

2. Stop Loss: To minimize the risk of loss, we recommend placing a stop loss at level 8,950.

Entry Buy : 9,100 – 9,225
Target Price : 9,375 – 9,450
Support : 8,975 – 9,100
Cutloss : 8,950

ERAA

Erajaya Swasembada Tbk, Indonesia, Jakarta:ERAA, D



(ERAA) The price closed higher and is testing the nearest resistance. The price has the opportunity to strengthen again to the nearest resistance. Stochastic indicator is bullish, MACD histogram is moving in the positive direction (potential for golden cross line) and volume is increasing. Confirmation to buy if the next candle is bullish again or buy on support if it goes down first. We suggest being careful if it fails to stay above the support level. **(Trading Buy)**

TRADING STRATEGY:

1. Target Price: The price has a bullish opportunity to test the resistance level 515. If it breaks level 515 then the price will go to level 525. We recommend to be careful if the price fails to break through or turn around the support area.

2. Stop Loss: To minimize the risk of loss, we recommend placing a stop loss at level 486.

Entry Buy : 494 – 505
 Target Price : 515 – 525
 Support : 488 – 494
 Cutloss : 486

EXCL

XL Axiata Tbk PT, Indonesia, Jakarta:EXCL, D



(EXCL) The price closed higher with a bullish candle. The price has the opportunity to strengthen again to the nearest resistance. The stochastic indicator is bullish, MACD histogram is moving in the positive direction (sloping line) and volume is increasing slightly. Confirmation to buy if the next candle is bullish again or buy on support if it goes down first. We suggest being careful if it fails to stay above the support level. **(Trading Buy)**

TRADING STRATEGY:

1. Target Price: The price has a bullish opportunity to test the resistance level 2,100. If it breaks level 2,100 then the price will go to level 2,160. We recommend to be careful if the price fails to break through or turn around the support area.

2. Stop Loss: To minimize the risk of loss, we recommend placing a stop loss at level 1,965.

Entry Buy : 2,000 – 2,050
 Target Price : 2,100 – 2,160
 Support : 1,970 – 2,000
 Cutloss : 1,965

JSMR

Jasa Marga Tbk, Indonesia, Jakarta:JSMR, D

EMA (13, close, 0)
EMA (34, close, 0)



(JSMR) The price closed higher with a bullish candle. The price has the opportunity to strengthen again to the nearest resistance. Stochastic indicator is bullish, MACD histogram is moving in the positive direction again (potential for golden cross line) and volume is neutral. Confirmation to buy if the next candle is bullish again or buy on support if it goes down first. We suggest being careful if it fails to stay above the support level. **(Trading Buy)**

TRADING STRATEGY:

1. Target Price: The price has a bullish opportunity to test the resistance level 3,230. If it breaks level 3,230 then the price will go to level 3,280. We recommend to be careful if the price fails to break through or turn around the support area.

2. Stop Loss: To minimize the risk of loss, we recommend placing a stop loss at level 3,080.

Entry Buy : 3,120 – 3,170
Target Price : 3,230 – 3,280
Support : 3,090 – 3,120
Cutloss : 3,080

Forecast – Technical Analysis

Ticker	MAS	RSI Rec	MACD Trend	Recomm.	Pivot Point	Support		Resistance		Stop Loss Level
						1	2	1	2	
JCI	Positif	Oversold	Negatif	Spec. Buy	6,650	6,600	6,575	6,700	6,725	6,475
ACES	Positif	Oversold	Negatif	Spec. Buy	451	444	437	458	465	430
ADRO	Positif	Oversold	Negatif	Spec. Buy	2,720	2,705	2,680	2,745	2,760	2,635
AKRA	Positif	Trading	Negatif	Hold	1,420	1,405	1,395	1,430	1,445	1,370
AMRT	Negatif	Trading	Negatif	Sell	2,865	2,830	2,775	2,920	2,955	2,735
ANTM	Negatif	Trading	Positif	Hold	1,900	1,885	1,870	1,915	1,930	1,840
ARTO	Positif	Oversold	Negatif	Spec. Buy	2,265	2,160	2,065	2,360	2,465	2,035
ASII	Negatif	Trading	Negatif	Sell	5,900	5,800	5,775	5,925	6,025	5,675
BBCA	Negatif	Trading	Negatif	Sell	8,450	8,400	8,325	8,525	8,575	8,200
BBNI	Negatif	Trading	Positif	Hold	9,125	9,000	8,850	9,275	9,400	8,725
BBRI	Negatif	Trading	Positif	Hold	4,885	4,845	4,805	4,925	4,965	4,730
BBTN	Negatif	Oversold	Negatif	Specu. Buy	1,215	1,200	1,190	1,225	1,240	1,170
BMRI	Negatif	Trading	Negatif	Sell	10,300	10,100	9,875	10,525	10,725	9,725
BRIS	Negatif	Trading	Negatif	Sell	1,580	1,565	1,555	1,590	1,605	1,530
BRPT	Negatif	Oversold	Negatif	Specu. Buy	785	775	760	800	810	745
BUKA	Positif	Strong Buy	Negatif	Buy	224	218	214	228	234	211
CPIN	Positif	Oversold	Negatif	Spec. Buy	4,935	4,900	4,835	5,000	5,025	4,760
EMTK	Positif	Strong Buy	Negatif	Buy	740	720	710	750	770	695
ESSA	Negatif	Trading	Negatif	Sell	945	940	930	955	960	915
EXCL	Positif	Oversold	Negatif	Spec. Buy	1,980	1,910	1,840	2,050	2,120	1,810
GOTO	Positif	Oversold	Negatif	Spec. Buy	107	104	99	112	115	98
HRUM	Positif	Oversold	Negatif	Spec. Buy	1,420	1,380	1,345	1,455	1,495	1,325
ICBP	Positif	Trading	Negatif	Hold	9,650	9,575	9,475	9,750	9,825	9,325
INCO	Negatif	Trading	Negatif	Sell	6,325	6,300	6,175	6,450	6,475	6,100
INDF	Positif	Oversold	Positif	Buy	6,175	6,125	6,075	6,225	6,275	5,975
INDY	Positif	Oversold	Negatif	Spec. Buy	2,050	2,030	2,010	2,070	2,090	1,980
INKP	Positif	Oversold	Negatif	Spec. Buy	7,275	7,150	7,025	7,400	7,525	6,925
INTP	Positif	Oversold	Negatif	Spec. Buy	10,125	10,000	9,875	10,250	10,375	9,725
ITMG	Negatif	Trading	Positif	Hold	38,350	38,100	37,775	38,675	38,925	37,200
JPFA	Positif	Oversold	Negatif	Spec. Buy	1,105	1,095	1,085	1,115	1,125	1,065
KLBF	Negatif	Trading	Positif	Hold	2,180	2,145	2,100	2,225	2,260	2,065
MDKA	Positif	Oversold	Negatif	Spec. Buy	3,900	3,870	3,830	3,940	3,970	3,775
MEDC	Positif	Oversold	Negatif	Spec. Buy	880	860	850	890	910	835
PGAS	Positif	Oversold	Negatif	Spec. Buy	1,350	1,335	1,325	1,360	1,375	1,305
PTBA	Positif	Trading	Negatif	Hold	3,780	3,750	3,720	3,810	3,840	3,665
SCMA	Positif	Oversold	Negatif	Spec. Buy	180	176	171	185	189	168
SIDO	Positif	Trading	Negatif	Hold	825	820	810	835	840	800
SMGR	Positif	Oversold	Negatif	Spec. Buy	6,175	6,100	5,975	6,300	6,375	5,900
SRTG	Positif	Oversold	Negatif	Spec. Buy	1,970	1,930	1,910	1,990	2,030	1,880
TBIG	Positif	Trading	Negatif	Hold	2,095	2,075	2,055	2,115	2,135	2,020
TINS	Positif	Strong Buy	Negatif	Buy	975	950	935	990	1,015	920
TLKM	Negatif	Trading	Positif	Hold	4,060	4,000	3,940	4,120	4,180	3,880
TOWR	Positif	Oversold	Negatif	Spec. Buy	905	895	880	920	930	865
TPIA	Negatif	Trading	Positif	Hold	2,250	2,220	2,200	2,270	2,300	2,165
UNTR	Negatif	Trading	Positif	Hold	27,600	27,450	27,275	27,775	27,925	26,875
UNVR	Positif	Trading	Positif	Spec. Buy	4,180	4,155	4,130	4,205	4,230	4,065

OUR TEAM

Sukarno Alatas

Head of Equity Research

sukarno@kiwoom.co.id | 021 5010 5800**Michelle Abadi**

Associate

michelle@kiwoom.co.id | 021 5010 5800**Abdul Azis Setyo Wibowo**

Equity Research Analyst

azis@kiwoom.co.id | 021 5010 5800**Rizky Khaerunnisa**

Equity Research Analyst

rizky@kiwoom.co.id | 021 5010 5800**OTHER DISCLOSURES**

All Kiwoom's research reports made available to clients are simultaneously available on our own website <http://www.kiwoom.co.id/>. Not all research content is redistributed, e-mailed or made available to third-party aggregators. For all research reports available on a particular stock, please contact your sales representative. Any data discrepancies in this report could be the result of different calculations and/or adjustments.

DISCLAIMER This report has been prepared and issued by PT Kiwoom Sekuritas Indonesia. Information has been obtained from sources believed to be reliable but Kiwoom Securities do not warrant its completeness or accuracy. Forward-looking information or statements in this report contain information that is based on forecast of future results, estimates of amounts not yet determinable, assumptions, and therefore involve known and unknown risks and uncertainties which may cause the actual results, performance or achievements of their subject matter to be materially different from current expectations.

To the fullest extent allowed by law, PT Kiwoom Sekuritas Indonesia shall not be liable for any direct, indirect or consequential losses, loss of profits, damages, costs or expenses incurred or suffered by any person or organization arising from reliance on or use of any information contained on this report. The information that we provide should not be construed in any manner whatsoever as, personalized advice.

No mention of a particular security in this report constitutes a recommendation to buy, sell or hold that or any security, or that any particular security, portfolio of securities, transaction or investment strategy is suitable for any specific person. This report is being supplied to you solely for your information and may not be reproduced by, further distributed to or published in whole or in part by, any other person.