

**JCI Range Today 6,630 – 6,641 (Support), 6,747 – 6,772 (Resistance)**

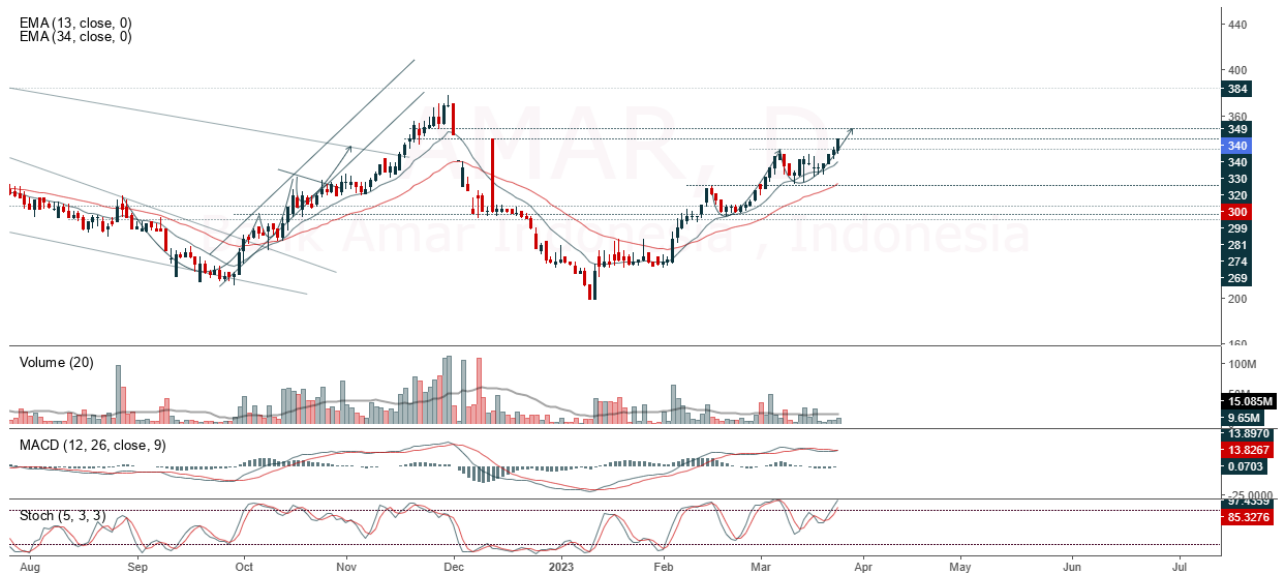


JCI managed to close down with a bearish candle. Stochastic indicator is neutral, MACD histogram is moving in the positive direction (sloping line) and volume is decreasing. If it moves bearish, JCI is expected to weaken to the support range of 6,630 – 6,641. If JCI is able to move bullish, there is a chance for JCI to go to the resistance at the range of 6,747 – 6,772.

**AMAR**

Bank Amar Indonesia , Indonesia, Jakarta:AMAR, D

EMA (13, close, 0)  
EMA (34, close, 0)



**(AMAR)** The price closed higher with a bullish candle. The price has the opportunity to strengthen again to the next resistance. Stochastic indicator is bullish, MACD histogram is moving positive (golden cross line) and volume is increasing. Confirmation to buy if the next candle is bullish again or buy on support if it goes down first. We suggest being careful if it fails to stay above the support level. **(Trading Buy)**

**TRADING STRATEGY:**

1. Target Price: The price has a bullish opportunity to test the resistance level 350. If it breaks level 350 then the price will go to level 358. We recommend to be careful if the price fails to break through or turn around the support area.

2. Stop Loss: To minimize the risk of loss, we recommend placing a stop loss at level 328.

Entry Buy : 332 – 340  
Target Price : 350 – 358  
Support : 330 – 332  
Cutloss : 328

**CTRA**

Ciputra Development Tbk, Indonesia, Jakarta:CTRA, D

EMA (13, close, 0)  
EMA (34, close, 0)



**(CTRA)** The price closed higher with a bullish candle. The price has the opportunity to strengthen again to the nearest resistance. Stochastic indicator is bullish, MACD histogram is moving positive (golden cross line) and volume is increasing. Confirmation to buy if the next candle is bullish again or buy on support if it goes down first. We suggest being careful if it fails to stay above the support level. **(Trading Buy)**

**TRADING STRATEGY:**

1.Target Price: The price has a bullish opportunity to test the resistance level 995. If it breaks level 995 then the price will go to level 1,005. We recommend to be careful if the price fails to break through or turn around the support area.

2. Stop Loss: To minimize the risk of loss, we recommend placing a stop loss at level 940.

Entry Buy : 950 – 975  
Target Price : 995 – 1,005  
Support : 945 – 950  
Cutloss : 940

**SIDO**

Industri Jamu dan Farmasi Sido Muncul Tbk PT, Indonesia:SIDO, D

EMA (13, close, 0)  
EMA (34, close, 0)



**(SIDO)** The price closed higher with a bullish candle. The price has the opportunity to strengthen again to the nearest resistance. Stochastic indicator is bullish, MACD histogram is moving in the positive direction (sloping line) and volume is decreasing. Confirmation to buy if the next candle is bullish again or buy on support if it goes down first. We suggest being careful if it fails to stay above the support level. **(Trading Buy)**

**TRADING STRATEGY:**

1. Target Price: The price has a bullish opportunity to test the resistance level 875. If it breaks level 875 then the price will go to level 890. We recommend to be careful if the price fails to break through or turn around the support area.

2. Stop Loss: To minimize the risk of loss, we recommend placing a stop loss at level 820.

Entry Buy : 835 – 855  
Target Price : 875 – 890  
Support : 825 – 835  
Cutloss : 820

**WIIM**

Wismilak Inti Makmur Tbk, Indonesia, Jakarta:WIIM, D

EMA (13, close, 0)  
EMA (34, close, 0)



**(WIIM)** The price closed higher with a bullish candle. The price has the opportunity to strengthen again to the nearest resistance. Stochastic indicator is bullish, MACD histogram is moving positive again (bullish line) and volume is increasing. Confirmation to buy if the next candle is bullish again or buy on support if it goes down first. We suggest being careful if it fails to stay above the support level. **(Trading Buy)**

**TRADING STRATEGY:**

- 1.Target Price: The price has a bullish opportunity to test the resistance level 865. If it breaks level 865 then the price will go to level 890. We recommend to be careful if the price fails to break through or turn around the support area.
2. Stop Loss: To minimize the risk of loss, we recommend placing a stop loss at level 795.

Entry Buy : 820 – 840  
Target Price : 865 – 890  
Support : 800 – 820  
Cutloss : 795

**Forecast – Technical Analysis**

Ticker	MAS	RSI Rec	MACD Trend	Recomm.	Pivot Point	Support		Resistance		Stop Loss Level
						1	2	1	2	
JCI	Negatif	Trading	Negatif	Sell	6,725	6,700	6,675	6,750	6,775	6,575
ACES	Negatif	Trading	Negatif	Sell	469	460	451	478	487	444
ADRO	Negatif	Oversold	Negatif	Specu. Buy	2,700	2,660	2,630	2,730	2,770	2,590
AKRA	Negatif	OverBought	Positif	Sell	1,530	1,525	1,495	1,560	1,565	1,475
AMRT	Negatif	Trading	Positif	Hold	2,900	2,865	2,820	2,945	2,980	2,775
ANTM	Negatif	Trading	Positif	Hold	1,960	1,910	1,885	1,985	2,035	1,855
ARTO	Negatif	Trading	Negatif	Sell	2,340	2,275	2,220	2,395	2,460	2,185
ASII	Negatif	Trading	Negatif	Sell	5,925	5,875	5,825	5,975	6,025	5,725
BBCA	Negatif	OverBought	Positif	Sell	8,775	8,700	8,650	8,825	8,900	8,500
BBNI	Negatif	OverBought	Positif	Sell	9,600	9,475	9,350	9,725	9,850	9,225
BBRI	Negatif	Trading	Positif	Hold	4,750	4,710	4,680	4,780	4,820	4,610
BBTN	Negatif	Trading	Negatif	Sell	1,280	1,265	1,245	1,300	1,315	1,230
BMRI	Negatif	OverBought	Positif	Sell	10,300	10,200	10,075	10,425	10,525	9,925
BRIS	Negatif	Trading	Negatif	Sell	1,610	1,600	1,580	1,630	1,640	1,555
BRPT	Negatif	Trading	Negatif	Sell	815	795	785	825	845	770
BUKA	Positif	Oversold	Negatif	Spec. Buy	236	230	226	240	246	223
CPIN	Negatif	Trading	Positif	Hold	5,075	5,000	4,925	5,150	5,225	4,850
EMTK	Positif	Oversold	Negatif	Spec. Buy	750	740	725	765	775	715
ESSA	Positif	Trading	Negatif	Hold	970	955	935	990	1,005	920
EXCL	Negatif	Trading	Negatif	Sell	2,005	1,980	1,965	2,020	2,045	1,935
GOTO	Positif	Trading	Negatif	Hold	115	113	111	117	119	109
HRUM	Positif	Oversold	Negatif	Spec. Buy	1,415	1,390	1,375	1,430	1,455	1,355
ICBP	Negatif	Trading	Positif	Hold	9,975	9,925	9,825	10,075	10,125	9,675
INCO	Negatif	Trading	Positif	Hold	6,475	6,400	6,350	6,525	6,600	6,250
INDF	Negatif	Trading	Positif	Hold	6,400	6,375	6,325	6,450	6,475	6,225
INDY	Negatif	Oversold	Negatif	Specu. Buy	2,080	2,030	2,010	2,100	2,150	1,980
INKP	Negatif	Trading	Positif	Hold	7,400	7,325	7,250	7,475	7,550	7,150
INTP	Negatif	Oversold	Negatif	Specu. Buy	9,975	9,875	9,700	10,150	10,250	9,550
ITMG	Negatif	Trading	Positif	Hold	38,525	38,175	37,875	38,825	39,175	37,300
JPFA	Negatif	Oversold	Negatif	Specu. Buy	1,155	1,130	1,110	1,175	1,200	1,095
KLBF	Negatif	Trading	Positif	Hold	2,130	2,095	2,060	2,165	2,200	2,025
MDKA	Negatif	Oversold	Negatif	Specu. Buy	3,950	3,910	3,870	3,990	4,030	3,810
MEDC	Negatif	Oversold	Negatif	Specu. Buy	910	895	880	925	940	865
PGAS	Negatif	Oversold	Negatif	Specu. Buy	1,380	1,350	1,340	1,390	1,420	1,315
PTBA	Negatif	Trading	Negatif	Sell	3,725	3,680	3,655	3,750	3,795	3,600
SCMA	Negatif	Oversold	Negatif	Specu. Buy	188	184	180	192	196	177
SIDO	Positif	Trading	Negatif	Hold	855	840	835	860	875	820
SMGR	Negatif	Oversold	Negatif	Specu. Buy	6,275	6,250	6,175	6,350	6,375	6,100
SRTG	Negatif	Oversold	Negatif	Specu. Buy	1,945	1,905	1,870	1,980	2,020	1,840
TBIG	Positif	Trading	Negatif	Hold	2,105	2,070	2,025	2,150	2,185	1,995
TINS	Negatif	Oversold	Negatif	Specu. Buy	1,015	1,000	990	1,025	1,040	975
TLKM	Negatif	Trading	Positif	Hold	4,075	4,030	3,985	4,120	4,165	3,925
TOWR	Positif	Oversold	Negatif	Spec. Buy	915	885	870	930	960	855
TPIA	Negatif	Trading	Positif	Hold	2,260	2,240	2,210	2,290	2,310	2,175
UNTR	Negatif	Trading	Positif	Hold	27,875	27,550	27,350	28,075	28,400	26,950
UNVR	Negatif	Trading	Positif	Hold	4,270	4,250	4,210	4,310	4,330	4,145

## OUR TEAM

**Sukarno Alatas**

Head of Equity Research

[sukarno@kiwoom.co.id](mailto:sukarno@kiwoom.co.id) | 021 5010 5800**Michelle Abadi**

Associate

[michelle@kiwoom.co.id](mailto:michelle@kiwoom.co.id) | 021 5010 5800**Abdul Azis Setyo Wibowo**

Equity Research Analyst

[azis@kiwoom.co.id](mailto:azis@kiwoom.co.id) | 021 5010 5800**Rizky Khaerunnisa**

Equity Research Analyst

[rizky@kiwoom.co.id](mailto:rizky@kiwoom.co.id) | 021 5010 5800**OTHER DISCLOSURES**

All Kiwoom's research reports made available to clients are simultaneously available on our own website <http://www.kiwoom.co.id/>. Not all research content is redistributed, e-mailed or made available to third-party aggregators. For all research reports available on a particular stock, please contact your sales representative. Any data discrepancies in this report could be the result of different calculations and/or adjustments.

**DISCLAIMER** This report has been prepared and issued by PT Kiwoom Sekuritas Indonesia. Information has been obtained from sources believed to be reliable but Kiwoom Securities do not warrant its completeness or accuracy. Forward-looking information or statements in this report contain information that is based on forecast of future results, estimates of amounts not yet determinable, assumptions, and therefore involve known and unknown risks and uncertainties which may cause the actual results, performance or achievements of their subject matter to be materially different from current expectations.

To the fullest extent allowed by law, PT Kiwoom Sekuritas Indonesia shall not be liable for any direct, indirect or consequential losses, loss of profits, damages, costs or expenses incurred or suffered by any person or organization arising from reliance on or use of any information contained on this report. The information that we provide should not be construed in any manner whatsoever as, personalized advice.

No mention of a particular security in this report constitutes a recommendation to buy, sell or hold that or any security, or that any particular security, portfolio of securities, transaction or investment strategy is suitable for any specific person. This report is being supplied to you solely for your information and may not be reproduced by, further distributed to or published in whole or in part by, any other person.