

## JCI Range Today 6,760 – 6,776 (Support), 6,890 – 6,923 (Resistance)

Jakarta Stock Exchange Composite Index, Indonesia, Jakarta:JKSE, D

EMA (34, close, 0)  
EMA (13, close, 0)



JCI closed higher again with a bullish candle. Stochastic indicator is bullish, MACD histogram is moving positive again (golden cross line) and volume is increasing. If JCI is able to move bullish, there is a chance for JCI to go to the resistance at the range of 6,890 – 6,923. If it moves bearish, JCI is expected to weaken to the support range of 6,760 – 6,776.

## ASII

Astra International Tbk, Indonesia, Jakarta:ASII, D

EMA (13, close, 0)  
EMA (34, close, 0)



**(ASII)** The price closed higher with a bullish candle. The price has the opportunity to strengthen again to the next resistance. Stochastic indicator is bullish, MACD histogram is moving positive (golden cross line) and volume is increasing. Confirmation to buy if the next candle is bullish again or buy on support if it goes down first. We suggest being careful if it fails to stay above the support level. **(Trading Buy)**

### TRADING STRATEGY:

1. Target Price: The price has a bullish opportunity to test the resistance level 6,075. If it breaks level 6,075 then the price will go to level 6,125. We recommend to be careful if the price fails to break through or turn around the support area.

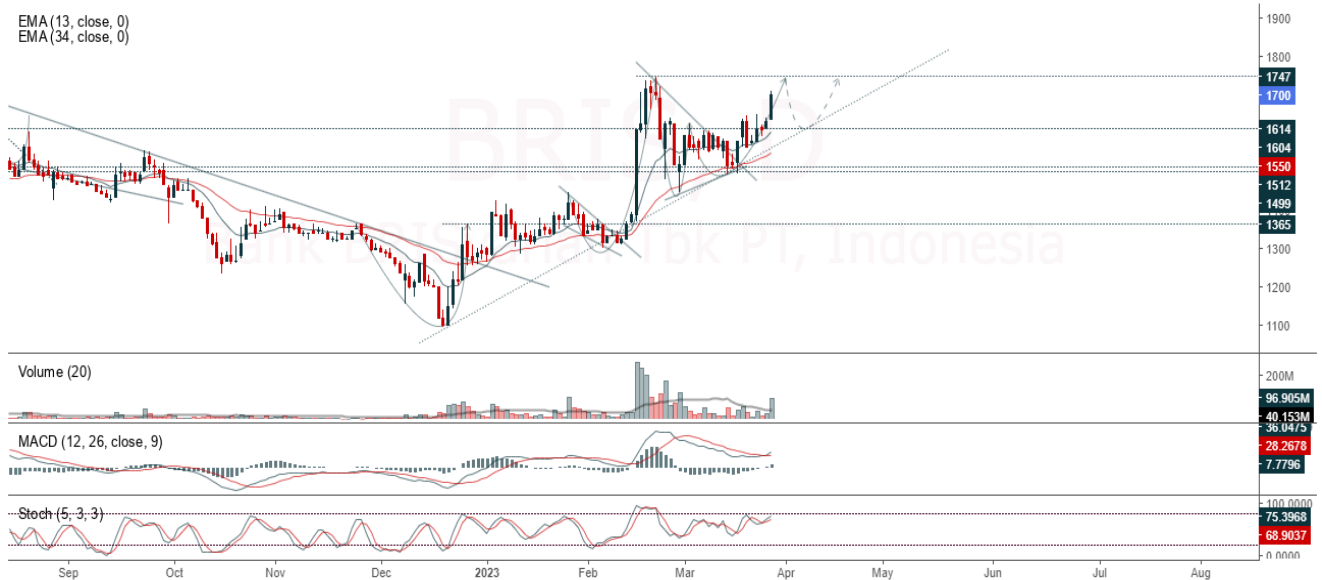
2. Stop Loss: To minimize the risk of loss, we recommend placing a stop loss at level 5,775.

Entry Buy : 5,850 – 5,950  
Target Price : 6,075 – 6,125  
Support : 5,800 – 5,850  
Cutloss : 5,775

**BRIS**

Bank BRISyariah Tbk PT, Indonesia, Jakarta:BRIS, D

EMA (13, close, 0)  
EMA (34, close, 0)



**(BRIS)** The price closed higher with a bullish candle. The price has the opportunity to strengthen again to the nearest resistance. The bullish stochastic indicator, MACD histogram managed to move positively (golden cross line) and volume increased. Confirmation to buy if the next candle is bullish again or buy on support if it goes down first. We suggest being careful if it fails to stay above the support level. **(Trading Buy)**

**TRADING STRATEGY:**

1. Target Price: The price has a bullish opportunity to test the resistance level 1,735. If it breaks level 1,735 then the price will go to level 1,745. We recommend to be careful if the price fails to break through or turn around the support area.

2. Stop Loss: To minimize the risk of loss, we recommend placing a stop loss at level 1,645.

Entry Buy : 1,660 – 1,700  
Target Price : 1,735 – 1,745  
Support : 1,650 – 1,660  
Cutloss : 1,645

**SRTG**

Saratoga Investama Sedaya, Indonesia, Jakarta:SRTG, D



**(SRTG)** The price closed higher with a bullish candle. The price has the opportunity to strengthen again to the nearest resistance. Stochastic indicator is bullish, MACD histogram is moving in the positive direction (potential for golden cross line) and volume is increasing. Confirmation to buy if the next candle is bullish again or buy on support if it goes down first. We suggest being careful if it fails to stay above the support level. **(Trading Buy)**

**TRADING STRATEGY:**

1. Target Price: The price has a bullish opportunity to test the resistance level 2,140. If it breaks level 2,140 then the price will go to level 2,190. We recommend to be careful if the price fails to break through or turn around the support area.

2. Stop Loss: To minimize the risk of loss, we recommend placing a stop loss at level 1,975.

Entry Buy : 2,010 – 2,060  
 Target Price : 2,140 – 2,190  
 Support : 1,980 – 2,010  
 Cutloss : 1,975

**WOOD**

Integra Indocabinet Tbk PT, Indonesia, Jakarta:WOOD, D



**(WOOD)** The price closed higher with a bullish candle. The price has the opportunity to strengthen again to the nearest resistance. Stochastic golden cross indicator, MACD histogram is moving in the positive direction again (potential for golden cross line) and volume is increasing. Confirmation to buy if the next candle is bullish again or buy on support if it goes down first. We suggest being careful if it fails to stay above the support level. **(Trading Buy)**

**TRADING STRATEGY:**

1. Target Price: The price has a bullish opportunity to test the resistance level 426. If it breaks level 426 then the price will go to level 440. We recommend to be careful if the price fails to break through or turn around the support area.

2. Stop Loss: To minimize the risk of loss, we recommend placing a stop loss at level 398.

Entry Buy : 406 – 414  
 Target Price : 426 – 440  
 Support : 400 – 406  
 Cutloss : 398

**Forecast – Technical Analysis**

Ticker	MA5	RSI Rec	MACD Trend	Recomm.	Pivot Point	Support		Resistance		Stop Loss Level
						1	2	1	2	
JCI	Negatif	Trading	Positif	Hold	6,800	6,775	6,725	6,850	6,900	6,625
ACES	Negatif	Trading	Negatif	Sell	468	463	460	471	476	453
ADRO	Negatif	Trading	Positif	Hold	2,850	2,790	2,740	2,900	2,960	2,700
AKRA	Negatif	OverBought	Positif	Sell	1,585	1,520	1,470	1,635	1,700	1,450
AMRT	Negatif	Trading	Positif	Hold	2,955	2,925	2,885	2,995	3,025	2,840
ANTM	Negatif	OverBought	Positif	Sell	2,045	1,995	1,955	2,085	2,135	1,925
ARTO	Negatif	Trading	Positif	Hold	2,355	2,185	2,065	2,475	2,645	2,030
ASII	Negatif	Trading	Negatif	Sell	5,925	5,800	5,725	6,000	6,125	5,650
BBCA	Negatif	Trading	Positif	Hold	8,725	8,650	8,550	8,825	8,900	8,425
BBNI	Negatif	Trading	Positif	Hold	9,125	9,025	8,900	9,250	9,350	8,775
BBRI	Positif	Trading	Negatif	Hold	4,800	4,780	4,750	4,830	4,850	4,680
BBTN	Negatif	Trading	Positif	Hold	1,230	1,220	1,205	1,245	1,255	1,185
BMRI	Negatif	Trading	Positif	Hold	10,300	10,225	10,125	10,400	10,475	9,975
BRIS	Negatif	OverBought	Positif	Sell	1,670	1,630	1,595	1,705	1,745	1,570
BRPT	Negatif	Trading	Positif	Hold	805	795	785	815	825	775
BUKA	Negatif	Trading	Positif	Hold	262	255	246	271	278	242
CPIN	Negatif	Trading	Positif	Hold	5,075	5,050	5,000	5,125	5,150	4,925
EMTK	Negatif	Oversold	Positif	Spec. Buy	810	790	775	825	845	760
ESSA	Negatif	Trading	Negatif	Sell	940	935	920	955	960	905
EXCL	Negatif	Trading	Positif	Hold	2,040	2,020	1,990	2,070	2,090	1,960
GOTO	Negatif	Trading	Negatif	Sell	117	115	113	119	121	111
HRUM	Negatif	Trading	Negatif	Sell	1,500	1,470	1,450	1,520	1,550	1,430
ICBP	Negatif	Trading	Positif	Hold	10,050	9,975	9,900	10,125	10,200	9,750
INCO	Negatif	Trading	Positif	Hold	6,575	6,550	6,475	6,650	6,675	6,375
INDF	Negatif	Trading	Positif	Hold	6,400	6,325	6,275	6,450	6,525	6,175
INDY	Negatif	OverBought	Positif	Sell	2,355	2,270	2,195	2,430	2,515	2,160
INKP	Negatif	Trading	Positif	Hold	7,600	7,525	7,400	7,725	7,800	7,275
INTP	Negatif	Trading	Negatif	Sell	10,700	10,550	10,425	10,825	10,975	10,275
ITMG	Negatif	OverBought	Positif	Sell	40,350	39,700	39,150	40,900	41,550	38,575
JPFA	Negatif	Trading	Positif	Hold	1,165	1,155	1,145	1,175	1,185	1,130
KLBF	Positif	Trading	Positif	Spec. Buy	2,190	2,160	2,120	2,230	2,260	2,090
MDKA	Negatif	Trading	Positif	Hold	4,095	4,030	3,975	4,150	4,215	3,915
MEDC	Negatif	Trading	Positif	Hold	960	945	930	975	990	915
PGAS	Negatif	Oversold	Negatif	Specu. Buy	1,400	1,380	1,370	1,410	1,430	1,345
PTBA	Positif	Trading	Negatif	Hold	3,890	3,820	3,760	3,950	4,020	3,705
SCMA	Negatif	Trading	Negatif	Sell	193	190	187	196	199	184
SIDO	Negatif	Trading	Negatif	Sell	865	855	850	870	880	835
SMGR	Negatif	Oversold	Negatif	Specu. Buy	6,400	6,325	6,275	6,450	6,525	6,175
SRTG	Negatif	Trading	Positif	Hold	2,025	1,985	1,945	2,065	2,105	1,915
TBIG	Negatif	Trading	Positif	Hold	2,210	2,175	2,160	2,225	2,260	2,125
TINS	Negatif	Trading	Negatif	Sell	1,040	1,025	1,005	1,060	1,075	990
TLKM	Negatif	OverBought	Positif	Sell	4,095	4,070	4,045	4,120	4,145	3,985
TOWR	Negatif	Trading	Positif	Hold	945	935	925	955	965	910
TPIA	Negatif	Trading	Positif	Hold	2,305	2,290	2,265	2,330	2,345	2,230
UNTR	Negatif	OverBought	Positif	Sell	29,000	28,575	28,250	29,325	29,750	27,825
UNVR	Negatif	Trading	Positif	Hold	4,335	4,295	4,265	4,365	4,405	4,200

## OUR TEAM

**Sukarno Alatas**

Head of Equity Research

[sukarno@kiwoom.co.id](mailto:sukarno@kiwoom.co.id) | 021 5010 5800**Michelle Abadi**

Associate

[michelle@kiwoom.co.id](mailto:michelle@kiwoom.co.id) | 021 5010 5800**Abdul Azis Setyo Wibowo**

Equity Research Analyst

[azis@kiwoom.co.id](mailto:azis@kiwoom.co.id) | 021 5010 5800**Rizky Khaerunnisa**

Equity Research Analyst

[rizky@kiwoom.co.id](mailto:rizky@kiwoom.co.id) | 021 5010 5800**OTHER DISCLOSURES**

All Kiwoom's research reports made available to clients are simultaneously available on our own website <http://www.kiwoom.co.id/>. Not all research content is redistributed, e-mailed or made available to third-party aggregators. For all research reports available on a particular stock, please contact your sales representative. Any data discrepancies in this report could be the result of different calculations and/or adjustments.

**DISCLAIMER** This report has been prepared and issued by PT Kiwoom Sekuritas Indonesia. Information has been obtained from sources believed to be reliable but Kiwoom Securities do not warrant its completeness or accuracy. Forward-looking information or statements in this report contain information that is based on forecast of future results, estimates of amounts not yet determinable, assumptions, and therefore involve known and unknown risks and uncertainties which may cause the actual results, performance or achievements of their subject matter to be materially different from current expectations.

To the fullest extent allowed by law, PT Kiwoom Sekuritas Indonesia shall not be liable for any direct, indirect or consequential losses, loss of profits, damages, costs or expenses incurred or suffered by any person or organization arising from reliance on or use of any information contained on this report. The information that we provide should not be construed in any manner whatsoever as, personalized advice.

No mention of a particular security in this report constitutes a recommendation to buy, sell or hold that or any security, or that any particular security, portfolio of securities, transaction or investment strategy is suitable for any specific person. This report is being supplied to you solely for your information and may not be reproduced by, further distributed to or published in whole or in part by, any other person.