

**JCI Range Today 6,747 – 6,760 (Support), 6,851 – 6,868 (Resistance)**

Jakarta Stock Exchange Composite Index, Indonesia, Jakarta:JKSE, D



JCI managed to close down after touching the resistance trendline. The stochastic indicator is weakening, MACD histogram is moving positive (bullish line) and volume is decreasing. If it moves bearish, JCI is expected to weaken to the support range of 6,747 – 6,760. If JCI is able to move bullish, there is a chance for JCI to go to the resistance at the range of 6,851 – 6,868.

**ACES**

Ace Hardware Indonesia Tbk, Indonesia, Jakarta:ACES, D



**(ACES)** The price closed higher with a bullish candle. The price has the opportunity to strengthen again to the next resistance. Stochastic indicator is bullish, MACD histogram is moving positive again (golden cross line) and volume is increasing. Confirmation to buy if the next candle is bullish again or buy on support if it goes down first. We suggest being careful if it fails to stay above the support level. **(Trading Buy)**

**TRADING STRATEGY:**

1. Target Price: The price has a bullish opportunity to test the resistance level 492. If it breaks level 492 then the price will go to level 500. We recommend to be careful if the price fails to break through or turn around the support area.

2. Stop Loss: To minimize the risk of loss, we recommend placing a stop loss at level 462.

Entry Buy : 474 – 482  
 Target Price : 492 – 500  
 Support : 464 – 474  
 Cutloss : 462

**BNGA**

Bank Cimb Niaga Tbk, Indonesia, Jakarta:BNGA, D

EMA (13, close, 0)  
EMA (34, close, 0)



**(BNGA)** The price closed higher with a bullish candle. The price has the opportunity to strengthen again to the nearest resistance. Stochastic indicator is bullish, MACD histogram is moving positive (golden cross line) and volume is neutral. Confirmation to buy if the next candle is bullish again (Buy on break at level of 1,280) or buy on support if it goes down first. We suggest being careful if it fails to stay above the support level. **(Trading Buy or Buy on break)**

**TRADING STRATEGY:**

1. Target Price: The price has a bullish opportunity to test the resistance level 1,300. If it breaks level 1,300 then the price will go to level 1,315. We recommend to be careful if the price fails to break through or turn around the support area.

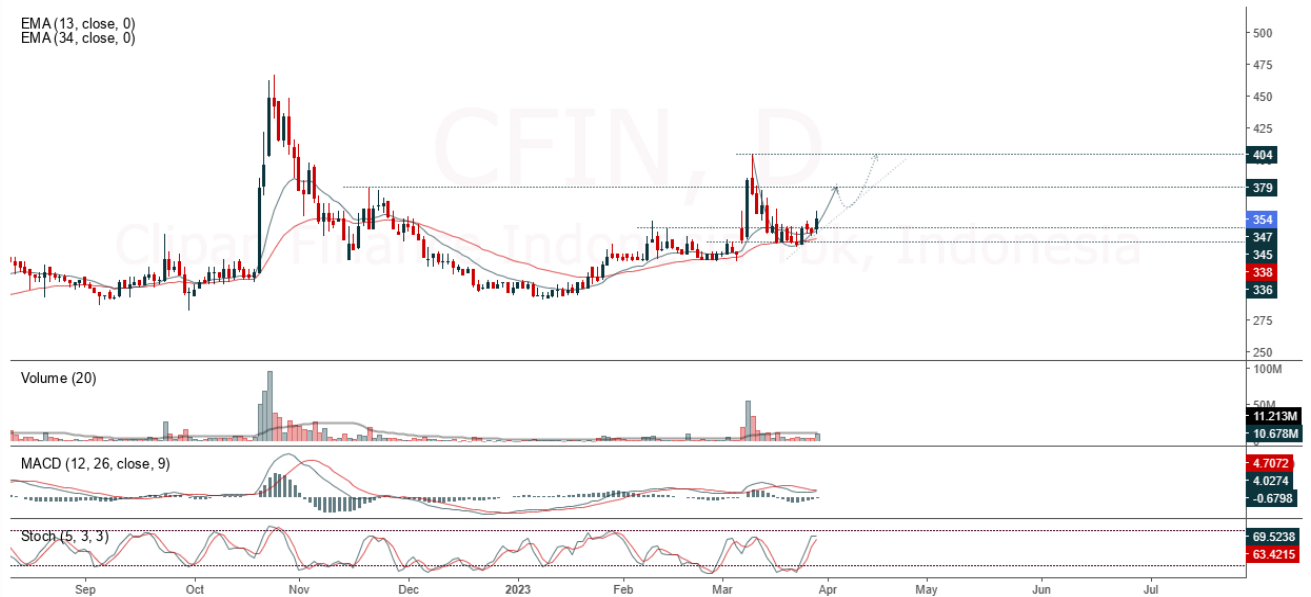
2. Stop Loss: To minimize the risk of loss, we recommend placing a stop loss at level 1,235.

Entry Buy : 1,250 – 1,275  
Target Price : 1,300 – 1,315  
Support : 1,240 – 1,250  
Cutloss : 1,235

**CFIN**

Clipan Finance Indonesia Tbk, Indonesia, Jakarta:CFIN, D

EMA (13, close, 0)  
EMA (34, close, 0)



**(CFIN)** The price closed higher with a bullish candle. The price has the opportunity to strengthen again to the nearest resistance. Stochastic indicator is bullish, MACD histogram is moving in the positive direction (sloping line) and volume is increasing. Confirmation to buy if the next candle is bullish again or buy on support if it goes down first. We suggest being careful if it fails to stay above the support level. **(Trading Buy)**

**TRADING STRATEGY:**

1.Target Price: The price has a bullish opportunity to test the resistance level 362. If it breaks level 362 then the price will go to level 370. We recommend to be careful if the price fails to break through or turn around the support area.

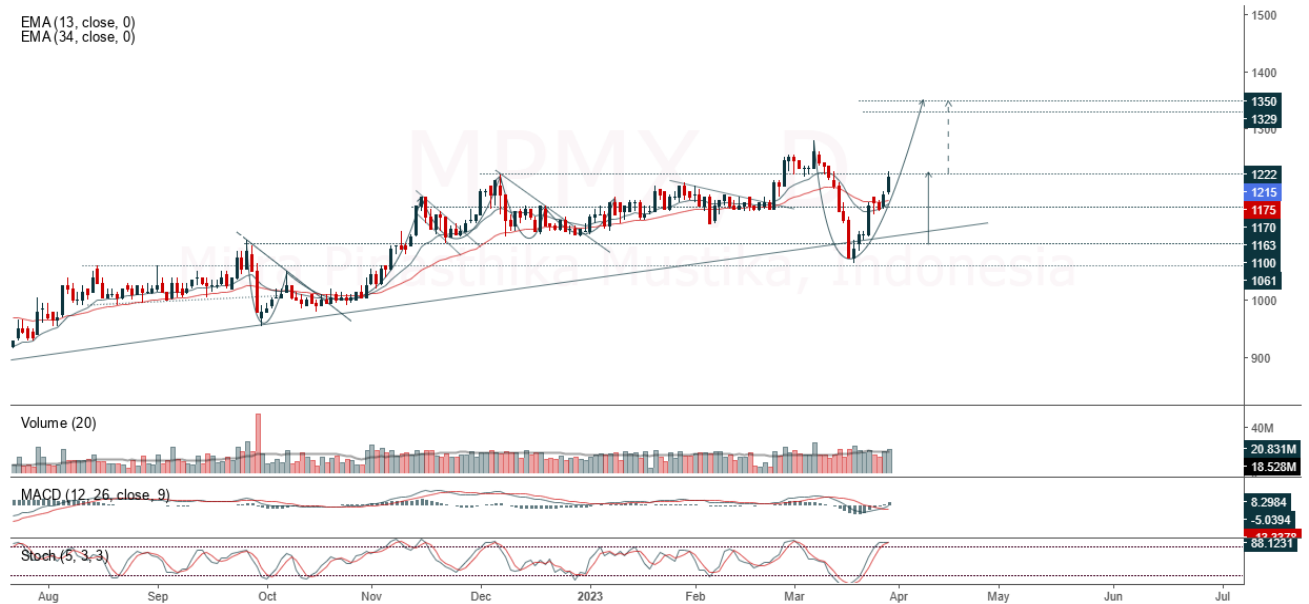
2. Stop Loss: To minimize the risk of loss, we recommend placing a stop loss at level 342.

Entry Buy : 348 – 354  
Target Price : 362 – 370  
Support : 344 – 348  
Cutloss : 342

**MPMX**

Mitra Pinasthika Mustika, Indonesia, Jakarta:MPMX, D

EMA (13, close, 0)  
EMA (34, close, 0)



**(MPMX)** The price closed higher with a bullish candle. The price has the opportunity to strengthen again to the nearest resistance. Stochastic indicator is bullish, MACD histogram is moving positive again (golden cross line) and volume is increasing. Confirmation to buy if the next candle is bullish again or buy on support if it goes down first. We suggest being careful if it fails to stay above the support level. **(Trading Buy)**

**TRADING STRATEGY:**

- 1.Target Price: The price has a bullish opportunity to test the resistance level 1,240. If it breaks level 1,240 then the price will go to level 1,255. We recommend to be careful if the price fails to break through or turn around the support area.
2. Stop Loss: To minimize the risk of loss, we recommend placing a stop loss at level 1,175.

Entry Buy : 1,190 – 1,215  
Target Price : 1,240 – 1,255  
Support : 1,180 – 1,190  
Cutloss : 1,175

**Forecast – Technical Analysis**

Ticker	MAS	RSI Rec	MACD Trend	Recomm.	Pivot Point	Support		Resistance		Stop Loss Level
						1	2	1	2	
JCI	Negatif	Trading	Positif	Hold	6,825	6,800	6,775	6,850	6,900	6,675
ACES	Negatif	Trading	Negatif	Sell	477	468	461	484	493	454
ADRO	Negatif	Trading	Positif	Hold	2,885	2,850	2,815	2,920	2,955	2,775
AKRA	Negatif	OverBought	Positif	Sell	1,595	1,560	1,515	1,640	1,675	1,490
AMRT	Negatif	Trading	Positif	Hold	2,900	2,840	2,760	2,980	3,040	2,720
ANTM	Negatif	OverBought	Positif	Sell	2,075	2,055	2,025	2,105	2,125	1,990
ARTO	Negatif	Trading	Positif	Hold	2,495	2,385	2,315	2,565	2,675	2,280
ASII	Negatif	Trading	Negatif	Sell	5,950	5,900	5,875	5,975	6,025	5,775
BBCA	Negatif	Trading	Positif	Hold	8,850	8,825	8,750	8,925	8,950	8,625
BBNI	Negatif	Trading	Positif	Hold	9,325	9,250	9,175	9,400	9,475	9,025
BBRI	Positif	Trading	Negatif	Hold	4,780	4,745	4,710	4,815	4,850	4,635
BBTN	Negatif	Trading	Positif	Hold	1,245	1,230	1,225	1,250	1,265	1,205
BMRI	Positif	Trading	Positif	Spec. Buy	10,300	10,200	10,125	10,375	10,475	9,975
BRIS	Negatif	OverBought	Positif	Sell	1,670	1,640	1,605	1,705	1,735	1,580
BRPT	Negatif	Trading	Positif	Hold	815	805	800	820	830	785
BUKA	Negatif	Trading	Positif	Hold	254	244	234	264	274	230
CPIN	Negatif	Trading	Positif	Hold	5,075	5,050	4,970	5,150	5,175	4,895
EMTK	Negatif	Oversold	Positif	Spec. Buy	795	775	750	820	840	740
ESSA	Negatif	Trading	Negatif	Sell	950	935	930	955	970	915
EXCL	Positif	Trading	Positif	Spec. Buy	2,040	1,995	1,960	2,075	2,120	1,930
GOTO	Negatif	Trading	Negatif	Sell	115	112	109	118	121	107
HRUM	Negatif	Trading	Negatif	Sell	1,495	1,475	1,455	1,515	1,535	1,430
ICBP	Negatif	Trading	Positif	Hold	9,925	9,850	9,775	10,000	10,075	9,625
INCO	Negatif	Trading	Positif	Hold	6,600	6,550	6,500	6,650	6,700	6,400
INDF	Negatif	Trading	Positif	Hold	6,400	6,350	6,275	6,475	6,525	6,175
INDY	Negatif	OverBought	Positif	Sell	2,410	2,355	2,310	2,455	2,510	2,275
INKP	Negatif	Trading	Positif	Hold	7,650	7,550	7,450	7,750	7,850	7,350
INTP	Negatif	Trading	Negatif	Sell	10,725	10,525	10,400	10,850	11,050	10,225
ITMG	Negatif	OverBought	Positif	Sell	40,000	38,525	36,900	41,625	43,100	36,350
JPFA	Negatif	Trading	Positif	Hold	1,165	1,140	1,125	1,180	1,205	1,105
KLBF	Positif	Trading	Positif	Spec. Buy	2,180	2,150	2,110	2,220	2,250	2,080
MDKA	Negatif	Trading	Positif	Hold	4,140	4,100	4,050	4,190	4,230	3,990
MEDC	Negatif	Trading	Positif	Hold	975	950	925	1,000	1,025	910
PGAS	Negatif	Oversold	Negatif	Specu. Buy	1,405	1,385	1,375	1,415	1,435	1,355
PTBA	Negatif	Trading	Negatif	Sell	3,900	3,845	3,800	3,945	4,000	3,740
SCMA	Negatif	Trading	Negatif	Sell	189	187	183	193	195	181
SIDO	Negatif	Trading	Negatif	Sell	850	840	825	865	875	815
SMGR	Negatif	Oversold	Negatif	Specu. Buy	6,400	6,325	6,300	6,425	6,500	6,200
SRTG	Negatif	Trading	Positif	Hold	2,030	1,970	1,915	2,085	2,145	1,885
TBIG	Negatif	Trading	Positif	Hold	2,180	2,150	2,110	2,220	2,250	2,080
TINS	Negatif	Trading	Negatif	Sell	1,050	1,040	1,025	1,065	1,075	1,010
TLKM	Positif	OverBought	Positif	Hold	4,080	4,025	3,990	4,115	4,170	3,930
TOWR	Negatif	Trading	Positif	Hold	940	915	900	955	980	885
TPIA	Negatif	Trading	Positif	Hold	2,300	2,280	2,260	2,320	2,340	2,225
UNTR	Negatif	OverBought	Positif	Sell	29,100	28,775	28,650	29,225	29,550	28,225
UNVR	Negatif	Trading	Positif	Hold	4,315	4,255	4,205	4,365	4,425	4,140

## OUR TEAM

**Sukarno Alatas**

Head of Equity Research

[sukarno@kiwoom.co.id](mailto:sukarno@kiwoom.co.id) | 021 5010 5800**Michelle Abadi**

Associate

[michelle@kiwoom.co.id](mailto:michelle@kiwoom.co.id) | 021 5010 5800**Abdul Azis Setyo Wibowo**

Equity Research Analyst

[azis@kiwoom.co.id](mailto:azis@kiwoom.co.id) | 021 5010 5800**Rizky Khaerunnisa**

Equity Research Analyst

[rizky@kiwoom.co.id](mailto:rizky@kiwoom.co.id) | 021 5010 5800**OTHER DISCLOSURES**

All Kiwoom's research reports made available to clients are simultaneously available on our own website <http://www.kiwoom.co.id/>. Not all research content is redistributed, e-mailed or made available to third-party aggregators. For all research reports available on a particular stock, please contact your sales representative. Any data discrepancies in this report could be the result of different calculations and/or adjustments.

**DISCLAIMER** This report has been prepared and issued by PT Kiwoom Sekuritas Indonesia. Information has been obtained from sources believed to be reliable but Kiwoom Securities do not warrant its completeness or accuracy. Forward-looking information or statements in this report contain information that is based on forecast of future results, estimates of amounts not yet determinable, assumptions, and therefore involve known and unknown risks and uncertainties which may cause the actual results, performance or achievements of their subject matter to be materially different from current expectations.

To the fullest extent allowed by law, PT Kiwoom Sekuritas Indonesia shall not be liable for any direct, indirect or consequential losses, loss of profits, damages, costs or expenses incurred or suffered by any person or organization arising from reliance on or use of any information contained on this report. The information that we provide should not be construed in any manner whatsoever as, personalized advice.

No mention of a particular security in this report constitutes a recommendation to buy, sell or hold that or any security, or that any particular security, portfolio of securities, transaction or investment strategy is suitable for any specific person. This report is being supplied to you solely for your information and may not be reproduced by, further distributed to or published in whole or in part by, any other person.