

JCI Range Today 6,776 – 6,781 (Support), 6,868 – 6,884 (Resistance)

Jakarta Stock Exchange Composite Index, Indonesia, Jakarta:JKSE, D

EMA (34, close, 0)
EMA (13, close, 0)



JCI managed to close at slight gains with a bullish candle. Stochastic indicator is bearish, MACD histogram is moving positive (bullish line) and volume is decreasing. If it moves bearish, JCI is expected to weaken to the support range of 6,776 – 6,781. If JCI is able to move bullish, there is a chance for JCI to go to the resistance at the range of 6,868 – 6,884.

ASII

Astra International Tbk, Indonesia, Jakarta:ASII, D



(ASII) The price closed higher with a bullish candle. The price has the opportunity to strengthen again to the nearest resistance. Stochastic indicator is bullish, MACD histogram is moving in the positive direction (golden cross line) and volume is neutral. Confirmation to buy if the next candle is bullish again or buy on support if it goes down first. We suggest being careful if it fails to stay above the support level. **(Trading Buy)**

TRADING STRATEGY:

1. Target Price: The price has a bullish opportunity to test the resistance level 6,150. If it breaks level 6,150 then the price will go to level 6,200. We recommend to be careful if the price fails to break through or turn around the support area.

2. Stop Loss: To minimize the risk of loss, we recommend placing a stop loss at level 5,875.

Entry Buy : 5,950 – 6,025
 Target Price : 6,150 – 6,200
 Support : 5,900 – 5,950
 Cutloss : 5,875

ELSA

Elnusa Tbk, Indonesia, Jakarta:ELSA, D

EMA (13, close, 0)



(ELSA) The price closed higher with a bullish candle. The price has the opportunity to strengthen again to the nearest resistance. Stochastic indicator is bullish, MACD histogram is moving positive (golden cross line) and volume is increasing slightly. Confirmation to buy if the next candle is bullish again or buy on support if it goes down first. We suggest being careful if it fails to stay above the support level. **(Trading Buy)**

TRADING STRATEGY:

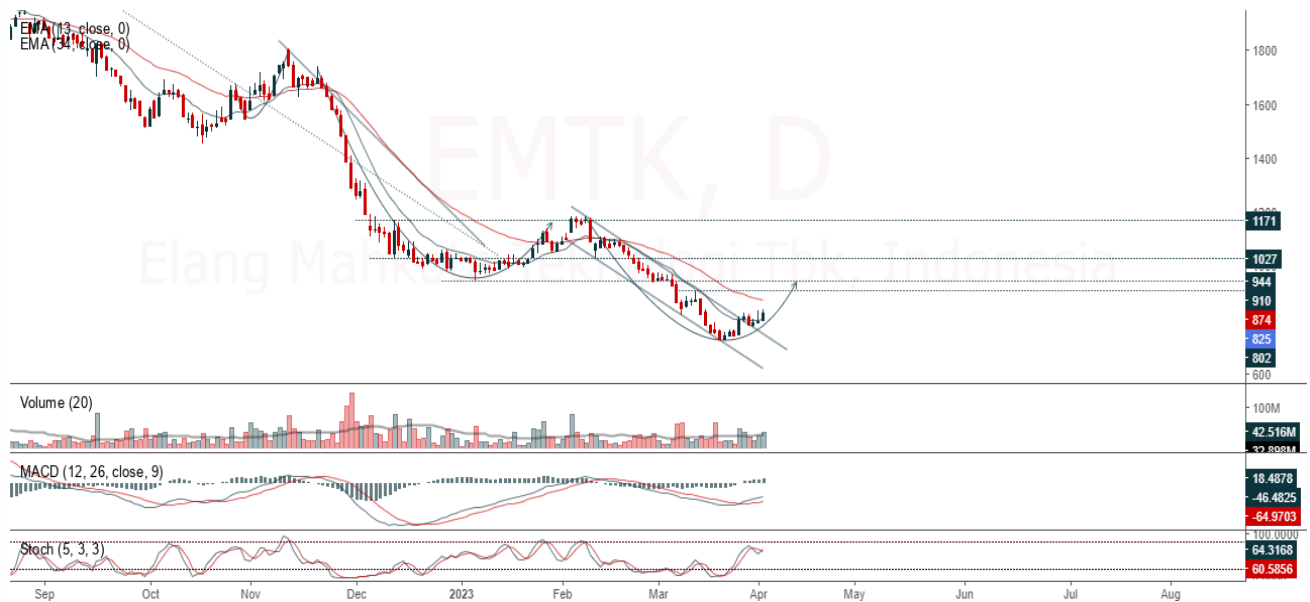
1.Target Price: The price has a bullish opportunity to test the resistance level 340. If it breaks level 340 then the price will go to level 350. We recommend to be careful if the price fails to break through or turn around the support area.

2. Stop Loss: To minimize the risk of loss, we recommend placing a stop loss at level 310.

Entry Buy : 318 – 328
 Target Price : 340 – 350
 Support : 312 – 318
 Cutloss : 310

EMTK

Elang Mahkota Teknologi Tbk, Indonesia, Jakarta:EMTK, D



(EMTK) The price closed higher with a bullish candle. The price has the opportunity to strengthen again to the nearest resistance. Stochastic indicator is bullish, MACD histogram is moving positive (bullish line) and volume is increasing. Confirmation to buy if the next candle is bullish again or buy on support if it goes down first. We suggest being careful if it fails to stay above the support level. **(Trading Buy)**

TRADING STRATEGY:

1.Target Price: The price has a bullish opportunity to test the resistance level 845. If it breaks level 845 then the price will go to level 865. We recommend to be careful if the price fails to break through or turn around the support area.

2. Stop Loss: To minimize the risk of loss, we recommend placing a stop loss at level 795.

Entry Buy : 810 – 825
 Target Price : 845 – 865
 Support : 800 – 810
 Cutloss : 795

ENRG

Energi Mega Persada Tbk, Indonesia, Jakarta:ENRG, D

EMA (13, close, 0)
EMA (34, close, 0)



(ENRG) The price closed higher with a bullish candle. The price has the opportunity to strengthen again to the nearest resistance. Stochastic indicator is bullish, MACD histogram is moving positive again (bullish line) and volume is neutral. Confirmation to buy if the next candle is bullish again or buy on support if it goes down first. We suggest being careful if it fails to stay above the support level. **(Trading Buy)**

TRADING STRATEGY:

- 1.Target Price: The price has a bullish opportunity to test the resistance level 254. If it breaks level 254 then the price will go to level 260. We recommend to be careful if the price fails to break through or turn around the support area.
2. Stop Loss: To minimize the risk of loss, we recommend placing a stop loss at level 230.

Entry Buy : 238 – 244
Target Price : 254 – 260
Support : 232 – 238
Cutloss : 230

Forecast – Technical Analysis

Ticker	MAS	RSI Rec	MACD Trend	Recomm.	Pivot Point	Support		Resistance		Stop Loss Level
						1	2	1	2	
JCI	Negatif	Trading	Positif	Hold	6,825	6,800	6,750	6,875	6,900	6,650
ACES	Negatif	Trading	Positif	Hold	478	470	464	484	492	457
ADRO	Negatif	Trading	Positif	Hold	3,040	2,995	2,970	3,065	3,110	2,925
AKRA	Negatif	OverBought	Positif	Sell	1,560	1,555	1,535	1,580	1,585	1,515
AMRT	Positif	Trading	Positif	Spec. Buy	2,895	2,845	2,795	2,945	2,995	2,750
ANTM	Negatif	OverBought	Positif	Sell	2,070	2,040	2,010	2,100	2,130	1,980
ARTO	Negatif	Trading	Positif	Hold	2,445	2,375	2,305	2,515	2,585	2,270
ASII	Negatif	Trading	Positif	Hold	6,025	5,975	5,925	6,075	6,125	5,825
BBCA	Negatif	Trading	Positif	Hold	8,775	8,725	8,600	8,900	8,950	8,475
BBNI	Negatif	Trading	Positif	Hold	9,325	9,275	9,150	9,450	9,500	9,000
BBRI	Negatif	Trading	Negatif	Sell	4,800	4,780	4,740	4,840	4,860	4,670
BBTN	Positif	Trading	Positif	Spec. Buy	1,225	1,210	1,205	1,230	1,245	1,185
BMRI	Negatif	Trading	Positif	Hold	5,225	5,125	5,025	5,325	5,425	4,935
BRIS	Negatif	OverBought	Positif	Sell	1,685	1,665	1,640	1,710	1,730	1,615
BRPT	Negatif	Trading	Positif	Hold	800	780	755	825	845	745
BUKA	Positif	Trading	Positif	Spec. Buy	240	235	232	243	248	228
CPIN	Positif	Oversold	Positif	Buy	4,760	4,660	4,540	4,880	4,980	4,470
EMTK	Negatif	Oversold	Positif	Spec. Buy	815	795	775	835	855	765
ESSA	Negatif	Trading	Negatif	Sell	955	935	910	980	1,000	900
EXCL	Positif	Trading	Positif	Spec. Buy	1,995	1,985	1,965	2,015	2,025	1,935
GOTO	Positif	Trading	Negatif	Hold	110	109	107	112	113	105
HRUM	Negatif	Trading	Positif	Hold	1,545	1,505	1,475	1,575	1,615	1,450
ICBP	Positif	Trading	Positif	Spec. Buy	10,050	9,925	9,700	10,275	10,400	9,550
INCO	Negatif	Trading	Positif	Hold	6,725	6,675	6,600	6,800	6,850	6,500
INDF	Positif	Trading	Positif	Spec. Buy	6,275	6,175	6,100	6,350	6,450	6,000
INDY	Negatif	OverBought	Positif	Sell	2,510	2,465	2,440	2,535	2,580	2,400
INKP	Positif	Trading	Positif	Spec. Buy	7,450	7,400	7,275	7,575	7,625	7,175
INTP	Positif	Trading	Positif	Spec. Buy	10,475	10,325	10,175	10,625	10,775	10,000
ITMG	Negatif	Trading	Positif	Hold	40,475	40,125	39,800	40,800	41,150	39,200
JPFA	Positif	Oversold	Positif	Buy	1,125	1,110	1,095	1,140	1,155	1,075
KLBF	Positif	Trading	Negatif	Hold	2,095	2,060	2,035	2,120	2,155	2,005
MDKA	Negatif	Trading	Positif	Hold	4,155	4,120	4,055	4,220	4,255	3,995
MEDC	Negatif	Trading	Positif	Hold	1,090	1,070	1,040	1,120	1,140	1,025
PGAS	Negatif	Oversold	Negatif	Specu. Buy	1,380	1,345	1,310	1,415	1,450	1,290
PTBA	Negatif	OverBought	Positif	Sell	4,100	4,045	4,000	4,145	4,200	3,940
SCMA	Positif	Oversold	Positif	Buy	188	185	183	190	193	180
SIDO	Positif	Trading	Negatif	Hold	855	840	830	865	880	815
SMGR	Positif	Oversold	Positif	Buy	6,325	6,300	6,175	6,450	6,475	6,100
SRTG	Negatif	Trading	Positif	Hold	2,020	1,995	1,970	2,045	2,070	1,940
TBIG	Positif	Trading	Positif	Spec. Buy	2,135	2,085	2,045	2,175	2,225	2,010
TINS	Negatif	Oversold	Positif	Spec. Buy	1,020	1,000	990	1,030	1,050	975
TLKM	Negatif	Trading	Negatif	Sell	4,070	4,040	4,010	4,100	4,130	3,950
TOWR	Negatif	Trading	Positif	Hold	955	940	925	970	985	910
TPIA	Negatif	Trading	Positif	Hold	2,300	2,280	2,260	2,320	2,340	2,225
UNTR	Negatif	OverBought	Positif	Sell	29,375	29,025	28,700	29,700	30,050	28,250
UNVR	Negatif	Trading	Positif	Hold	4,270	4,250	4,200	4,320	4,340	4,135

OUR TEAM

Sukarno Alatas

Head of Equity Research

sukarno@kiwoom.co.id | 021 5010 5800**Michelle Abadi**

Associate

michelle@kiwoom.co.id | 021 5010 5800**Abdul Azis Setyo Wibowo**

Equity Research Analyst

azis@kiwoom.co.id | 021 5010 5800**Rizky Khaerunnisa**

Equity Research Analyst

rizky@kiwoom.co.id | 021 5010 5800**OTHER DISCLOSURES**

All Kiwoom's research reports made available to clients are simultaneously available on our own website <http://www.kiwoom.co.id/>. Not all research content is redistributed, e-mailed or made available to third-party aggregators. For all research reports available on a particular stock, please contact your sales representative. Any data discrepancies in this report could be the result of different calculations and/or adjustments.

DISCLAIMER This report has been prepared and issued by PT Kiwoom Sekuritas Indonesia. Information has been obtained from sources believed to be reliable but Kiwoom Securities do not warrant its completeness or accuracy. Forward-looking information or statements in this report contain information that is based on forecast of future results, estimates of amounts not yet determinable, assumptions, and therefore involve known and unknown risks and uncertainties which may cause the actual results, performance or achievements of their subject matter to be materially different from current expectations.

To the fullest extent allowed by law, PT Kiwoom Sekuritas Indonesia shall not be liable for any direct, indirect or consequential losses, loss of profits, damages, costs or expenses incurred or suffered by any person or organization arising from reliance on or use of any information contained on this report. The information that we provide should not be construed in any manner whatsoever as, personalized advice.

No mention of a particular security in this report constitutes a recommendation to buy, sell or hold that or any security, or that any particular security, portfolio of securities, transaction or investment strategy is suitable for any specific person. This report is being supplied to you solely for your information and may not be reproduced by, further distributed to or published in whole or in part by, any other person.