

JCI Range Today 6,760 – 6,781 (Support), 6,859 – 6,868 (Resistance)

Jakarta Stock Exchange Composite Index, Indonesia, Jakarta:JKSE, D

EMA (34, close, 0)
EMA (13, close, 0)



JCI managed to close slightly lower with a bearish candle. Stochastic indicator is bearish, MACD histogram is moving positive (bullish line) and volume is increasing. If it moves bearish, JCI is expected to weaken to the support range of 6,760 – 6,781. If JCI is able to move bullish, there is a chance for JCI to go to the resistance at the range of 6,859 – 6,868.

ASSA



(ASSA) The price closed higher with a bullish candle. The price has the opportunity to strengthen again to the nearest resistance. Stochastic golden cross indicator, MACD histogram is moving positive (golden cross line) and volume is increasing. Confirmation to buy if the next candle is bullish again or buy on support if it goes down first. We suggest being careful if it fails to stay above the support. **(Trading Buy)**

TRADING STRATEGY:

1. Target Price: The price has a bullish opportunity to test the resistance level 805. If it breaks level 805 then the price will go to level 820. We recommend to be careful if the price fails to break through or turn around the support area.

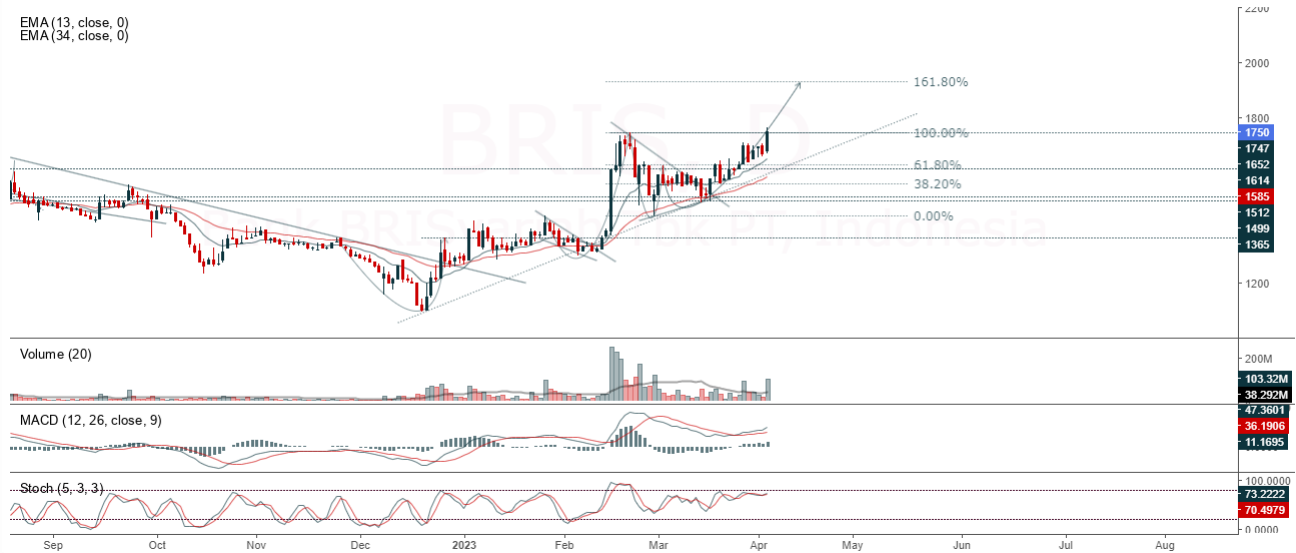
2. Stop Loss: To minimize the risk of loss, we recommend placing a stop loss at level 760.

Entry Buy : 775 – 785
Target Price : 805 – 820
Support : 765 – 775
Cutloss : 760

BRIS

Bank BRISyariah Tbk PT, Indonesia, Jakarta:BRIS, D

EMA (13, close, 0)
EMA (34, close, 0)



(BRIS) The price closed higher with a bullish candle. The price has the opportunity to strengthen again to the nearest resistance. Stochastic indicator is bullish, MACD histogram is moving positive (bullish line) and volume is increasing. Confirmation to buy if the next candle is bullish again (Buy on break at level of 1,750) or buy on support if it goes down first. We suggest being careful if it fails to stay above the support level. **(Trading Buy or Buy on break)**

TRADING STRATEGY:

1. Target Price: The price has a bullish opportunity to test the resistance level 1,785. If it breaks level 1,785 then the price will go to level 1,820. We recommend to be careful if the price fails to break through or turn around the support area.

2. Stop Loss: To minimize the risk of loss, we recommend placing a stop loss at level 1,705.

Entry Buy : 1,720 – 1,750
Target Price : 1,785 – 1,820
Support : 1,710 – 1,720
Cutloss : 1,705

EMTK



(EMTK) The price closed higher with a bullish candle. The price has the opportunity to strengthen again to the nearest resistance. Stochastic indicator is bullish, MACD histogram is moving positive (bullish line) and volume is neutral. Confirmation to buy if the next candle is bullish again or buy on support if it goes down first. We suggest being careful if it fails to stay above the support. **(Trading Buy)**

TRADING STRATEGY:

1.Target Price: The price has a bullish opportunity to test the resistance level 860. If it breaks level 860 then the price will go to level 870. We recommend to be careful if the price fails to break through or turn around the support area.

2. Stop Loss: To minimize the risk of loss, we recommend placing a stop loss at level 810.

Entry Buy : 825 – 825
 Target Price : 860 – 870
 Support : 815 – 825
 Cutloss : 810

TLKM

Telkom Indonesia (Persero) Tbk PT, Indonesia, Jakarta:TLKM, D



(TLKM) The price closed higher with a bullish candle. The price has the opportunity to strengthen again to the nearest resistance. Stochastic indicator is bullish, MACD histogram is moving positive again (bullish line) and volume is increasing. Confirmation to buy if the next candle is bullish again or buy on support if it goes down first. We suggest being careful if it fails to stay above the support. **(Trading Buy)**

TRADING STRATEGY:

- 1.Target Price: The price has a bullish opportunity to test the resistance level 4,230. If it breaks level 4,230 then the price will go to level 4,270. We recommend to be careful if the price fails to break through or turn around the support area.
2. Stop Loss: To minimize the risk of loss, we recommend placing a stop loss at level 4,030.

Entry Buy : 4,080 – 4,150
 Target Price : 4,230 – 4,270
 Support : 4,040 – 4,080
 Cutloss : 4,030

Forecast – Technical Analysis

Ticker	MAS	RSI Rec	MACD Trend	Recomm.	Pivot Point	Support		Resistance		Stop Loss Level
						1	2	1	2	
JCI	Positif	Trading	Positif	Spec. Buy	6,825	6,800	6,775	6,850	6,875	6,675
ACES	Negatif	Trading	Positif	Hold	471	461	455	477	487	448
ADRO	Negatif	OverBought	Positif	Sell	3,045	3,015	2,975	3,085	3,115	2,930
AKRA	Positif	OverBought	Positif	Hold	1,560	1,540	1,525	1,575	1,595	1,500
AMRT	Positif	Trading	Positif	Spec. Buy	2,835	2,780	2,715	2,900	2,955	2,675
ANTM	Negatif	Trading	Positif	Hold	2,100	2,045	2,020	2,125	2,180	1,985
ARTO	Negatif	Trading	Positif	Hold	2,390	2,350	2,310	2,430	2,470	2,275
ASII	Negatif	Trading	Positif	Hold	6,025	5,975	5,950	6,050	6,100	5,850
BBCA	Positif	Trading	Positif	Spec. Buy	8,750	8,725	8,675	8,800	8,825	8,550
BBNI	Negatif	Trading	Positif	Hold	9,350	9,250	9,175	9,425	9,525	9,025
BBRI	Positif	Trading	Negatif	Hold	4,830	4,780	4,750	4,860	4,910	4,680
BBTN	Positif	Trading	Positif	Spec. Buy	1,230	1,200	1,185	1,245	1,275	1,165
BMRI	Positif	Trading	Positif	Spec. Buy	5,200	5,150	5,100	5,250	5,300	5,025
BRIS	Positif	Trading	Positif	Spec. Buy	1,715	1,670	1,620	1,765	1,810	1,595
BRPT	Positif	Trading	Positif	Spec. Buy	785	775	765	795	805	750
BUKA	Positif	Trading	Positif	Spec. Buy	235	226	219	242	251	216
CPIN	Positif	Oversold	Positif	Buy	4,630	4,550	4,460	4,720	4,800	4,395
EMTK	Positif	Trading	Positif	Spec. Buy	840	820	810	850	870	795
ESSA	Positif	Trading	Negatif	Hold	935	920	900	955	970	890
EXCL	Positif	Trading	Positif	Spec. Buy	1,985	1,965	1,945	2,005	2,025	1,915
GOTO	Positif	Trading	Negatif	Hold	109	106	104	111	114	102
HRUM	Negatif	Trading	Positif	Hold	1,555	1,545	1,525	1,575	1,585	1,505
ICBP	Negatif	Trading	Positif	Hold	10,150	10,075	9,975	10,250	10,325	9,825
INCO	Negatif	Trading	Positif	Hold	6,675	6,550	6,375	6,850	6,975	6,275
INDF	Positif	Trading	Positif	Spec. Buy	6,325	6,275	6,225	6,375	6,425	6,125
INDY	Negatif	OverBought	Positif	Sell	2,515	2,455	2,395	2,575	2,635	2,355
INKP	Positif	Trading	Positif	Spec. Buy	7,350	7,250	7,150	7,450	7,550	7,025
INTP	Positif	Trading	Positif	Spec. Buy	10,125	9,725	9,325	10,525	10,925	9,175
ITMG	Positif	OverBought	Positif	Hold	40,650	40,350	39,900	41,100	41,400	39,300
JPFA	Positif	Oversold	Positif	Buy	1,115	1,100	1,085	1,130	1,145	1,065
KLBF	Positif	Trading	Negatif	Hold	2,110	2,070	2,050	2,130	2,170	2,020
MDKA	Negatif	Trading	Positif	Hold	4,220	4,160	4,130	4,250	4,310	4,070
MEDC	Negatif	OverBought	Positif	Sell	1,095	1,080	1,055	1,120	1,135	1,040
PGAS	Positif	Trading	Positif	Spec. Buy	1,400	1,380	1,365	1,415	1,435	1,345
PTBA	Negatif	OverBought	Positif	Sell	4,080	4,060	4,030	4,110	4,130	3,970
SCMA	Positif	Oversold	Positif	Buy	186	182	180	188	192	177
SIDO	Positif	Trading	Negatif	Hold	845	830	825	850	865	810
SMGR	Positif	Oversold	Positif	Buy	6,200	6,025	5,825	6,400	6,575	5,725
SRTG	Positif	Trading	Positif	Spec. Buy	2,015	1,995	1,985	2,025	2,045	1,955
TBIG	Positif	Trading	Positif	Spec. Buy	2,120	2,095	2,080	2,135	2,160	2,045
TINS	Positif	Oversold	Positif	Buy	1,020	1,000	985	1,035	1,055	970
TLKM	Positif	Trading	Negatif	Hold	4,125	4,080	4,035	4,170	4,215	3,975
TOWR	Positif	Trading	Positif	Spec. Buy	940	930	915	955	965	900
TPIA	Positif	Trading	Positif	Spec. Buy	2,280	2,265	2,240	2,305	2,320	2,205
UNTR	Negatif	OverBought	Positif	Sell	29,675	29,250	28,875	30,050	30,475	28,450
UNVR	Positif	Trading	Positif	Spec. Buy	4,280	4,235	4,210	4,305	4,350	4,145

OUR TEAM

Sukarno Alatas

Head of Equity Research

sukarno@kiwoom.co.id | 021 5010 5800**Michelle Abadi**

Associate

michelle@kiwoom.co.id | 021 5010 5800**Abdul Azis Setyo Wibowo**

Equity Research Analyst

azis@kiwoom.co.id | 021 5010 5800**Rizky Khaerunnisa**

Equity Research Analyst

rizky@kiwoom.co.id | 021 5010 5800**OTHER DISCLOSURES**

All Kiwoom's research reports made available to clients are simultaneously available on our own website <http://www.kiwoom.co.id/>. Not all research content is redistributed, e-mailed or made available to third-party aggregators. For all research reports available on a particular stock, please contact your sales representative. Any data discrepancies in this report could be the result of different calculations and/or adjustments.

DISCLAIMER This report has been prepared and issued by PT Kiwoom Sekuritas Indonesia. Information has been obtained from sources believed to be reliable but Kiwoom Securities do not warrant its completeness or accuracy. Forward-looking information or statements in this report contain information that is based on forecast of future results, estimates of amounts not yet determinable, assumptions, and therefore involve known and unknown risks and uncertainties which may cause the actual results, performance or achievements of their subject matter to be materially different from current expectations.

To the fullest extent allowed by law, PT Kiwoom Sekuritas Indonesia shall not be liable for any direct, indirect or consequential losses, loss of profits, damages, costs or expenses incurred or suffered by any person or organization arising from reliance on or use of any information contained on this report. The information that we provide should not be construed in any manner whatsoever as, personalized advice.

No mention of a particular security in this report constitutes a recommendation to buy, sell or hold that or any security, or that any particular security, portfolio of securities, transaction or investment strategy is suitable for any specific person. This report is being supplied to you solely for your information and may not be reproduced by, further distributed to or published in whole or in part by, any other person.