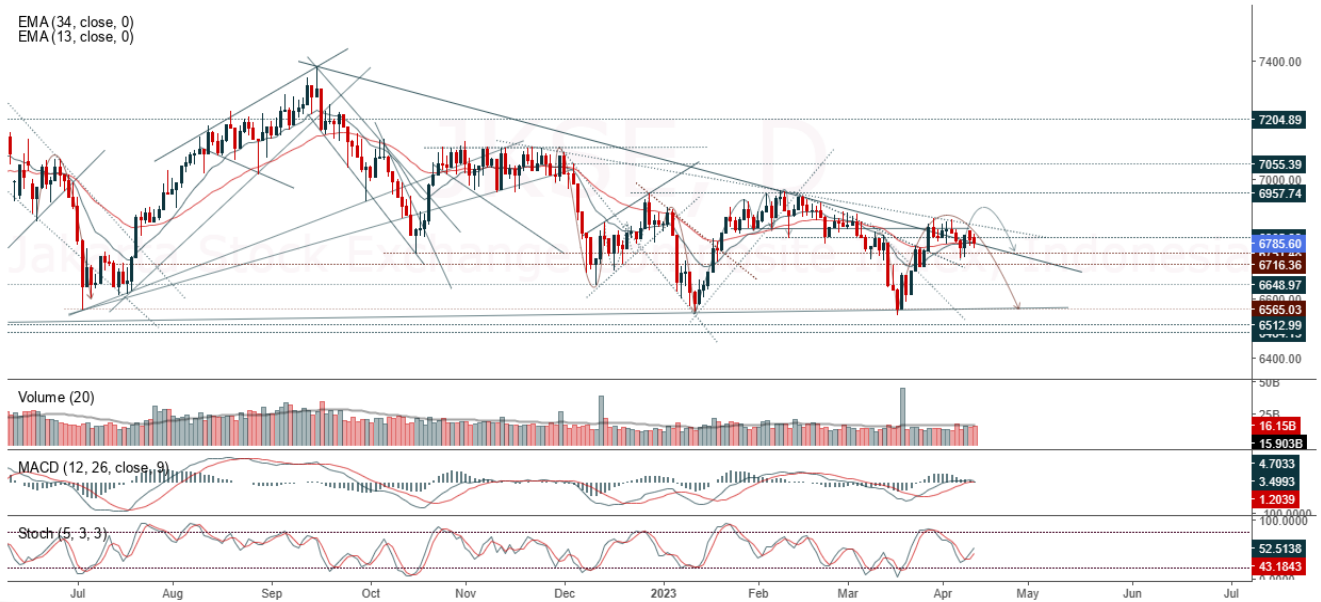


JCI Range Today 6,709 – 6,738 (Support), 6,816 – 6,833 (Resistance)

Jakarta Stock Exchange Composite Index, Indonesia, Jakarta:JKSE, D

EMA (34, close, 0)
EMA (13, close, 0)



JCI closed lower with a bearish candle. The stochastic indicator is sloping, MACD histogram is moving positive (bullish line) and volume is increasing slightly. If JCI is able to move bullish, there is a chance for JCI to go to the resistance at the range of 6,816 – 6,833. If it moves bearish, JCI is expected to weaken to the support range of 6,709 – 6,738.

BTPS

Bank Tabungan Pensiunan Nasional Syariah PT, Indonesia, Jakarta:BTPS, D



(BTPS) The price closed higher with a bullish candle. The price has the opportunity to strengthen again to the nearest resistance. Stochastic indicator is bullish, MACD histogram is moving positive (bullish line) and volume is increasing. Confirmation to buy if the next candle is bullish again or buy on support if it goes down first. We suggest being careful if it fails to stay above the support level. **(Trading Buy)**

TRADING STRATEGY:

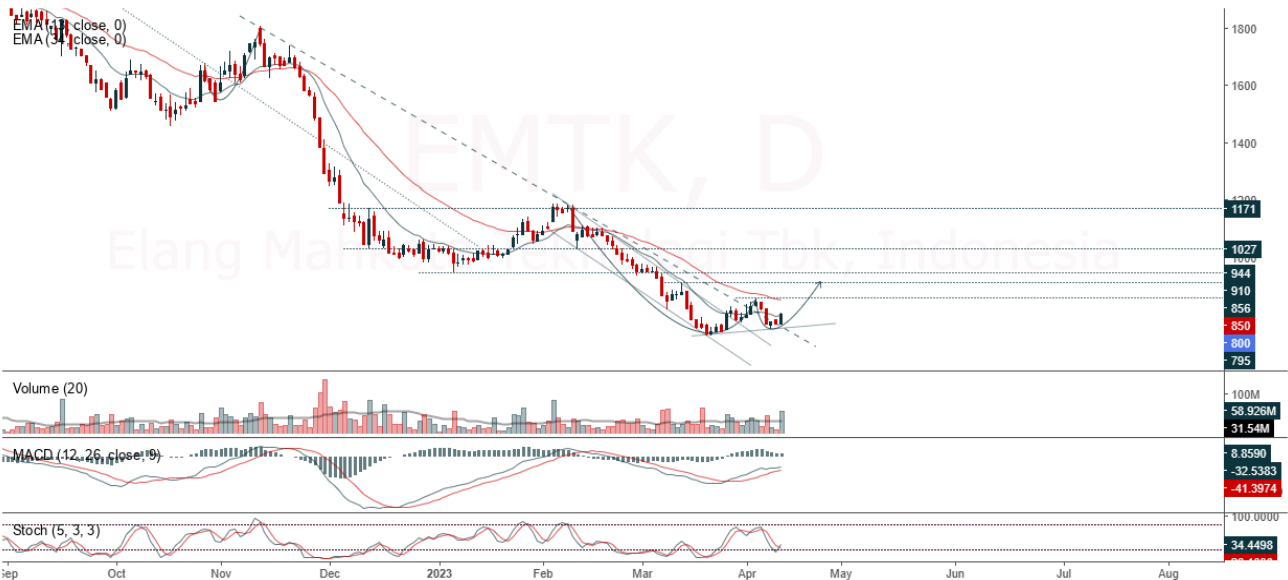
1. Target Price: The price has a bullish opportunity to test the resistance level 2,330. If it breaks level 2,330 then the price will go to level 2,360. We recommend to be careful if the price fails to break through or turn around the support area.

2. Stop Loss: To minimize the risk of loss, we recommend placing a stop loss at level 2,180.

Entry Buy : 2,210 – 2,270
 Target Price : 2,330 – 2,360
 Support : 2,190 – 2,210
 Cutloss : 2,180

EMTK

Elang Mahkota Teknologi Tbk, Indonesia, Jakarta:EMTK, D



(EMTK) The price closed higher with a bullish candle. The price has the opportunity to strengthen again to the nearest resistance. Stochastic indicator is bullish, MACD histogram is moving positive (bullish line) and volume is increasing. Confirmation to buy if the next candle is bullish again or buy on support if it goes down first. We suggest being careful if it fails to stay above the support level. **(Trading Buy)**

TRADING STRATEGY:

1.Target Price: The price has a bullish opportunity to test the resistance level 820. If it breaks level 820 then the price will go to level 740. We recommend to be careful if the price fails to break through or turn around the support area.

2. Stop Loss: To minimize the risk of loss, we recommend placing a stop loss at level 770.

Entry Buy : 790 – 800
 Target Price : 820 – 840
 Support : 775 – 790
 Cutloss : 770

ICBP

Indofood Cbp Sukses Makmur Tbk, Indonesia, Jakarta:ICBP, D

EMA (13, close, 0)
EMA (34, close, 0)



(ICBP) The price closed higher with a bullish candle. The price has the opportunity to strengthen again to the nearest resistance. Stochastic indicator is bullish, MACD histogram is moving positive (bullish line) and volume is increasing. Confirmation to buy if the next candle is bullish again or buy on support if it goes down first. We suggest being careful if it fails to stay above the support level. **(Trading Buy)**

TRADING STRATEGY:

1. Target Price: The price has a bullish opportunity to test the resistance level 10,450. If it breaks level 10,450 then the price will go to level 10,575. We recommend to be careful if the price fails to break through or turn around the support area.

2. Stop Loss: To minimize the risk of loss, we recommend placing a stop loss at level 10,000.

Entry Buy : 10,075 – 10,250
Target Price : 10,450 – 10,575
Support : 10,025 – 10,075
Cutloss : 10,000

TOWR

Sarana Menara Nusantara Tbk, Indonesia, Jakarta:TOWR, D



(TOWR) The price closed higher with a bullish candle. The price has the opportunity to re-test the nearest resistance. Stochastic indicator is bullish, MACD histogram is moving positive (bullish line) and volume is increasing. Confirmation to buy if the next candle is bullish again or buy on support if it goes down first. We suggest being careful if it fails to stay above the support level. **(Trading Buy)**

TRADING STRATEGY:

- 1.Target Price: The price has a bullish opportunity to test the resistance level 975. If it breaks level 975 then the price will go to level 990. We recommend to be careful if the price fails to break through or turn around the support area.
2. Stop Loss: To minimize the risk of loss, we recommend placing a stop loss at level 920.

Entry Buy : 935 – 955
Target Price : 975 – 990
Support : 925 – 935
Cutloss : 920

Forecast – Technical Analysis

Ticker	MAS	RSI Rec	MACD Trend	Recomm.	Pivot Point	Support		Resistance		Stop Loss Level
						1	2	1	2	
JCI	Positif	Trading	Positif	Spec. Buy	6,800	6,775	6,750	6,825	6,850	6,650
ACES	Positif	Trading	Negatif	Hold	449	444	439	454	459	432
ADRO	Positif	Trading	Positif	Spec. Buy	2,970	2,930	2,910	2,990	3,030	2,865
AKRA	Negatif	OverBought	Positif	Sell	1,585	1,565	1,555	1,595	1,615	1,530
AMRT	Positif	Trading	Negatif	Hold	2,750	2,725	2,690	2,785	2,810	2,645
ANTM	Positif	Trading	Positif	Spec. Buy	2,120	2,105	2,090	2,135	2,150	2,055
ARTO	Positif	Trading	Positif	Spec. Buy	2,280	2,220	2,180	2,320	2,380	2,145
ASII	Negatif	OverBought	Positif	Sell	6,225	6,200	6,125	6,300	6,325	6,050
BBCA	Negatif	OverBought	Positif	Sell	8,925	8,900	8,850	8,975	9,000	8,725
BBNI	Negatif	Trading	Positif	Hold	9,400	9,375	9,300	9,475	9,500	9,175
BBRI	Negatif	OverBought	Positif	Sell	4,965	4,930	4,895	5,000	5,025	4,820
BBTN	Negatif	Trading	Positif	Hold	1,265	1,255	1,245	1,275	1,285	1,225
BMRI	Positif	Trading	Negatif	Hold	5,150	5,125	5,075	5,200	5,225	5,000
BRIS	Negatif	OverBought	Positif	Sell	1,745	1,715	1,685	1,775	1,805	1,660
BRPT	Negatif	Trading	Positif	Hold	790	780	760	810	820	750
BUKA	Negatif	Trading	Negatif	Sell	234	229	226	237	242	222
CPIN	Positif	Oversold	Negatif	Spec. Buy	4,495	4,460	4,395	4,560	4,595	4,330
EMTK	Positif	Oversold	Positif	Buy	785	765	745	805	825	735
ESSA	Positif	Oversold	Negatif	Spec. Buy	830	805	785	850	875	770
EXCL	Positif	Oversold	Negatif	Spec. Buy	1,820	1,795	1,770	1,845	1,870	1,740
GOTO	Positif	Oversold	Negatif	Spec. Buy	91	88	87	92	95	85
HRUM	Negatif	Trading	Positif	Hold	1,570	1,555	1,520	1,605	1,620	1,495
ICBP	Negatif	Trading	Positif	Hold	10,200	10,025	9,900	10,325	10,500	9,750
INCO	Positif	Trading	Positif	Spec. Buy	6,425	6,375	6,325	6,475	6,525	6,225
INDF	Negatif	Trading	Positif	Hold	6,300	6,275	6,250	6,325	6,350	6,150
INDY	Positif	OverBought	Positif	Hold	2,625	2,550	2,465	2,710	2,785	2,430
INKP	Negatif	Trading	Positif	Hold	7,600	7,475	7,400	7,675	7,800	7,275
INTP	Negatif	Trading	Positif	Hold	10,300	10,200	10,075	10,425	10,525	9,925
ITMG	Positif	Oversold	Negatif	Spec. Buy	34,475	33,975	33,600	34,850	35,350	33,100
JPFA	Negatif	Oversold	Positif	Spec. Buy	1,100	1,085	1,080	1,105	1,120	1,060
KLBF	Positif	Trading	Negatif	Hold	2,045	2,030	2,015	2,060	2,075	1,985
MDKA	Positif	Trading	Positif	Spec. Buy	4,130	4,095	4,030	4,195	4,230	3,965
MEDC	Positif	Trading	Positif	Spec. Buy	1,045	1,020	1,000	1,065	1,090	985
PGAS	Positif	Trading	Positif	Spec. Buy	1,385	1,375	1,360	1,400	1,410	1,340
PTBA	Positif	Trading	Negatif	Hold	3,980	3,900	3,860	4,020	4,100	3,800
SCMA	Positif	Oversold	Positif	Buy	179	177	175	181	183	172
SIDO	Positif	Trading	Negatif	Hold	820	805	800	825	840	785
SMGR	Negatif	Oversold	Positif	Spec. Buy	6,175	6,075	6,025	6,225	6,325	5,925
SRTG	Positif	Oversold	Positif	Buy	1,885	1,870	1,850	1,905	1,920	1,825
TBIG	Positif	Trading	Negatif	Hold	2,130	2,085	2,060	2,155	2,200	2,025
TINS	Positif	Oversold	Positif	Buy	1,000	975	955	1,020	1,045	940
TLKM	Negatif	OverBought	Positif	Sell	4,330	4,310	4,270	4,370	4,390	4,205
TOWR	Positif	Oversold	Positif	Buy	940	915	895	960	985	880
TPIA	Positif	Trading	Negatif	Hold	2,230	2,205	2,180	2,255	2,280	2,145
UNTR	Negatif	OverBought	Positif	Sell	31,250	31,000	30,800	31,450	31,700	30,350
UNVR	Positif	Trading	Positif	Spec. Buy	4,135	4,090	4,055	4,170	4,215	3,995

OUR TEAM

Sukarno Alatas

Head of Equity Research

sukarno@kiwoom.co.id | 021 5010 5800**Michelle Abadi**

Associate

michelle@kiwoom.co.id | 021 5010 5800**Abdul Azis Setyo Wibowo**

Equity Research Analyst

azis@kiwoom.co.id | 021 5010 5800**Rizky Khaerunnisa**

Equity Research Analyst

rizky@kiwoom.co.id | 021 5010 5800**OTHER DISCLOSURES**

All Kiwoom's research reports made available to clients are simultaneously available on our own website <http://www.kiwoom.co.id/>. Not all research content is redistributed, e-mailed or made available to third-party aggregators. For all research reports available on a particular stock, please contact your sales representative. Any data discrepancies in this report could be the result of different calculations and/or adjustments.

DISCLAIMER This report has been prepared and issued by PT Kiwoom Sekuritas Indonesia. Information has been obtained from sources believed to be reliable but Kiwoom Securities do not warrant its completeness or accuracy. Forward-looking information or statements in this report contain information that is based on forecast of future results, estimates of amounts not yet determinable, assumptions, and therefore involve known and unknown risks and uncertainties which may cause the actual results, performance or achievements of their subject matter to be materially different from current expectations.

To the fullest extent allowed by law, PT Kiwoom Sekuritas Indonesia shall not be liable for any direct, indirect or consequential losses, loss of profits, damages, costs or expenses incurred or suffered by any person or organization arising from reliance on or use of any information contained on this report. The information that we provide should not be construed in any manner whatsoever as, personalized advice.

No mention of a particular security in this report constitutes a recommendation to buy, sell or hold that or any security, or that any particular security, portfolio of securities, transaction or investment strategy is suitable for any specific person. This report is being supplied to you solely for your information and may not be reproduced by, further distributed to or published in whole or in part by, any other person.