

JCI Range Today 6,738 – 6,764 (Support), 6,851 – 6,868 (Resistance)

Jakarta Stock Exchange Composite Index, Indonesia, Jakarta:JKSE, D



JCI closed higher with a bullish candle. Stochastic indicator is bullish, MACD histogram is moving positive (bullish line) and volume is decreasing. If JCI is able to move bullish, there is a chance for JCI to go to the resistance at the range of 6,851 – 6,868. If it moves bearish, JCI is expected to weaken to the support range of 6,738 – 6,764.

BMRI

Bank Mandiri Persero Tbk PT, Indonesia, Jakarta:BMRI, D

EMA
EMA



(BMRI) The price closed higher with a bullish candle. The price has the opportunity to strengthen again to the nearest resistance. Stochastic indicator is bullish, MACD histogram is moving in the positive direction (bullish line) and volume is increasing. Confirmation to buy if the next candle is bullish again or buy on support if it goes down first. We suggest being careful if it fails to stay above the support level. **(Trading Buy)**

TRADING STRATEGY:

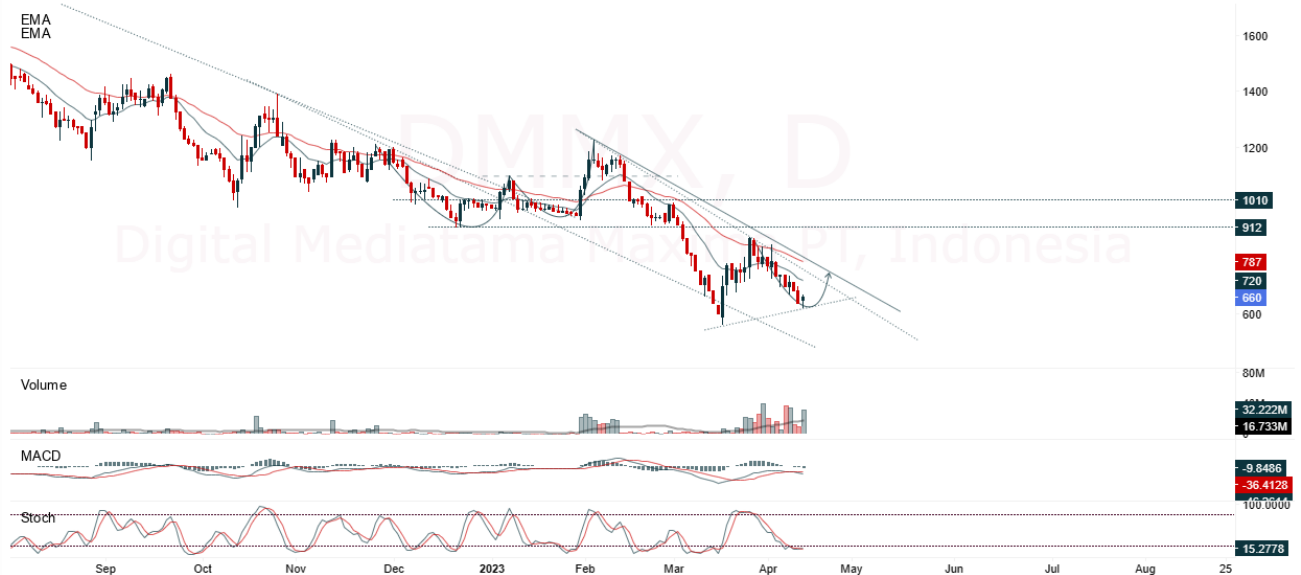
1. Target Price: The price has a bullish opportunity to test the resistance level 5,350. If it breaks level 5,350 then the price will go to level 5,400. We recommend to be careful if the price fails to break through or turn around the support area.

2. Stop Loss: To minimize the risk of loss, we recommend placing a stop loss at level 5,075.

Entry Buy : 5,150 – 5,225
 Target Price : 5,350 – 5,400
 Support : 5,100 – 5,150
 Cutloss : 5,075

DMMX

Digital Mediatama Maxima PT, Indonesia, Jakarta:DMMX, D



(DMMX) The price closed higher with a bullish candle. The price has the opportunity to strengthen again to the nearest resistance. Stochastic golden cross indicator, MACD histogram is moving negative (dead line cross) and volume is increasing. Confirmation to buy if the next candle is bullish again or buy on support if it goes down first. We suggest being careful if it fails to stay above the support level. **(Trading Buy)**

TRADING STRATEGY:

1. Target Price: The price has a bullish opportunity to test the resistance level 680. If it breaks level 680 then the price will go to level 700. We recommend to be careful if the price fails to break through or turn around the support area.

2. Stop Loss: To minimize the risk of loss, we recommend placing a stop loss at level 635.

Entry Buy : 650 – 660
 Target Price : 680 – 700
 Support : 640 – 650
 Cutloss : 635

INCO

Vale Indonesia Tbk, Indonesia, Jakarta:INCO, D

EMA (13, close, 0)
EMA (34, close, 0)



(INCO) The price closed higher and formed a swing low. The price has the opportunity to strengthen again to the nearest resistance. Stochastic indicator is bullish, MACD histogram is moving positive (bullish line) and volume is increasing slightly. Confirmation to buy if the next candle is bullish again or buy on support if it goes down first. We suggest being careful if it fails to stay above the support level. **(Trading Buy)**

TRADING STRATEGY:

1. Target Price: The price has a bullish opportunity to test the resistance level 6,725. If it breaks level 6,725 then the price will go to level 6,775. We recommend to be careful if the price fails to break through or turn around the support area.

2. Stop Loss: To minimize the risk of loss, we recommend placing a stop loss at level 6,350.

Entry Buy : 6,475 – 6,575
Target Price : 6,725 – 6,775
Support : 6,375 – 6,475
Cutloss : 6,350

JSMR

Jasa Marga Tbk, Indonesia, Jakarta:JSMR, D

EMA (13, close, 0)
EMA (34, close, 0)



(JSMR) The price closed higher with a bullish candle. The price has the opportunity to re-test the nearest resistance. Stochastic indicator is bullish, MACD histogram is moving positive (bullish line) and volume is increasing. Confirmation to buy if the next candle is bullish again or buy on support if it goes down first. We suggest being careful if it fails to stay above the support level. **(Trading Buy)**

TRADING STRATEGY:

- 1.Target Price: The price has a bullish opportunity to test the resistance level 3,460. If it breaks level 3,460 then the price will go to level 3,500. We recommend to be careful if the price fails to break through or turn around the support area.
2. Stop Loss: To minimize the risk of loss, we recommend placing a stop loss at level 3,300.

Entry Buy : 3,350 – 3,390
 Target Price : 3,460 – 3,500
 Support : 3,310 – 3,350
 Cutloss : 3,300

Forecast – Technical Analysis

Ticker	MA5	RSI Rec	MACD Trend	Recomm.	Pivot Point	Support		Resistance		Stop Loss Level
						1	2	1	2	
JCI	Negatif	Trading	Positif	Hold	6,825	6,800	6,775	6,825	6,850	6,675
ACES	Positif	Oversold	Negatif	Spec. Buy	447	443	441	449	453	434
ADRO	Positif	Trading	Positif	Spec. Buy	2,950	2,905	2,880	2,975	3,020	2,835
AKRA	Negatif	OverBought	Positif	Sell	1,595	1,575	1,565	1,605	1,625	1,540
AMRT	Negatif	Trading	Negatif	Sell	2,745	2,730	2,715	2,760	2,775	2,675
ANTM	Positif	OverBought	Positif	Hold	2,130	2,100	2,080	2,150	2,180	2,050
ARTO	Positif	Trading	Positif	Spec. Buy	2,265	2,150	2,085	2,330	2,445	2,055
ASII	Negatif	OverBought	Positif	Sell	6,250	6,200	6,150	6,300	6,350	6,050
BBCA	Negatif	OverBought	Positif	Sell	9,000	8,975	8,950	9,025	9,050	8,800
BBNI	Positif	Trading	Positif	Spec. Buy	9,425	9,350	9,300	9,475	9,550	9,150
BBRI	Negatif	OverBought	Positif	Sell	5,050	5,025	4,955	5,125	5,150	4,880
BBTN	Negatif	Trading	Positif	Hold	1,285	1,265	1,250	1,300	1,320	1,230
BMRI	Positif	Trading	Negatif	Hold	5,200	5,150	5,100	5,250	5,300	5,025
BRIS	Positif	Trading	Positif	Spec. Buy	1,765	1,720	1,685	1,800	1,845	1,660
BRPT	Negatif	Trading	Positif	Hold	805	800	790	815	820	775
BUKA	Negatif	Trading	Positif	Hold	236	232	230	238	242	227
CPIN	Negatif	Oversold	Negatif	Specu. Buy	4,510	4,465	4,430	4,545	4,590	4,360
EMTK	Positif	Trading	Positif	Spec. Buy	805	785	775	815	835	760
ESSA	Positif	Oversold	Negatif	Spec. Buy	770	750	730	790	810	720
EXCL	Positif	Oversold	Negatif	Spec. Buy	1,810	1,790	1,775	1,825	1,845	1,750
GOTO	Positif	Oversold	Negatif	Spec. Buy	93	90	88	95	98	87
HRUM	Positif	Trading	Positif	Spec. Buy	1,560	1,545	1,535	1,570	1,585	1,510
ICBP	Negatif	Trading	Positif	Hold	10,275	10,200	10,125	10,350	10,425	9,975
INCO	Negatif	Trading	Positif	Hold	6,475	6,400	6,275	6,600	6,675	6,175
INDF	Negatif	Trading	Positif	Hold	6,325	6,225	6,200	6,350	6,450	6,100
INDY	Negatif	OverBought	Positif	Sell	2,660	2,630	2,590	2,700	2,730	2,550
INKP	Negatif	Trading	Positif	Hold	7,500	7,450	7,375	7,575	7,625	7,275
INTP	Negatif	Trading	Positif	Hold	10,300	10,175	10,125	10,350	10,475	9,950
ITMG	Positif	Oversold	Negatif	Spec. Buy	34,150	33,725	33,300	34,575	35,000	32,800
JPFA	Positif	Oversold	Positif	Buy	1,095	1,085	1,080	1,100	1,110	1,065
KLBF	Negatif	Trading	Negatif	Sell	2,055	2,030	2,015	2,070	2,095	1,985
MDKA	Positif	Trading	Positif	Spec. Buy	4,230	4,140	4,030	4,340	4,430	3,970
MEDC	Positif	Trading	Positif	Spec. Buy	1,065	1,030	995	1,100	1,135	980
PGAS	Negatif	Trading	Positif	Hold	1,390	1,380	1,370	1,400	1,410	1,350
PTBA	Positif	Trading	Negatif	Hold	3,980	3,925	3,880	4,025	4,080	3,820
SCMA	Positif	Oversold	Positif	Buy	174	168	162	180	186	159
SIDO	Positif	Trading	Negatif	Hold	815	805	800	820	830	790
SMGR	Negatif	Oversold	Positif	Spec. Buy	6,150	6,075	6,050	6,175	6,250	5,950
SRTG	Positif	Oversold	Negatif	Spec. Buy	1,885	1,855	1,845	1,895	1,925	1,815
TBIG	Negatif	Trading	Negatif	Sell	2,125	2,100	2,085	2,140	2,165	2,055
TINS	Positif	Oversold	Positif	Buy	995	975	960	1,010	1,030	945
TLKM	Negatif	OverBought	Positif	Sell	4,340	4,320	4,300	4,360	4,380	4,235
TOWR	Negatif	Trading	Positif	Hold	975	950	930	995	1,020	915
TPIA	Positif	Trading	Negatif	Hold	2,245	2,230	2,215	2,260	2,275	2,180
UNTR	Negatif	OverBought	Positif	Sell	30,650	30,150	29,725	31,075	31,575	29,275
UNVR	Positif	Oversold	Negatif	Spec. Buy	4,155	4,085	4,055	4,185	4,255	3,990

OUR TEAM

Sukarno Alatas

Head of Equity Research

sukarno@kiwoom.co.id | 021 5010 5800**Michelle Abadi**

Associate

michelle@kiwoom.co.id | 021 5010 5800**Abdul Azis Setyo Wibowo**

Equity Research Analyst

azis@kiwoom.co.id | 021 5010 5800**Rizky Khaerunnisa**

Equity Research Analyst

rizky@kiwoom.co.id | 021 5010 5800**OTHER DISCLOSURES**

All Kiwoom's research reports made available to clients are simultaneously available on our own website <http://www.kiwoom.co.id/>. Not all research content is redistributed, e-mailed or made available to third-party aggregators. For all research reports available on a particular stock, please contact your sales representative. Any data discrepancies in this report could be the result of different calculations and/or adjustments.

DISCLAIMER This report has been prepared and issued by PT Kiwoom Sekuritas Indonesia. Information has been obtained from sources believed to be reliable but Kiwoom Securities do not warrant its completeness or accuracy. Forward-looking information or statements in this report contain information that is based on forecast of future results, estimates of amounts not yet determinable, assumptions, and therefore involve known and unknown risks and uncertainties which may cause the actual results, performance or achievements of their subject matter to be materially different from current expectations.

To the fullest extent allowed by law, PT Kiwoom Sekuritas Indonesia shall not be liable for any direct, indirect or consequential losses, loss of profits, damages, costs or expenses incurred or suffered by any person or organization arising from reliance on or use of any information contained on this report. The information that we provide should not be construed in any manner whatsoever as, personalized advice.

No mention of a particular security in this report constitutes a recommendation to buy, sell or hold that or any security, or that any particular security, portfolio of securities, transaction or investment strategy is suitable for any specific person. This report is being supplied to you solely for your information and may not be reproduced by, further distributed to or published in whole or in part by, any other person.