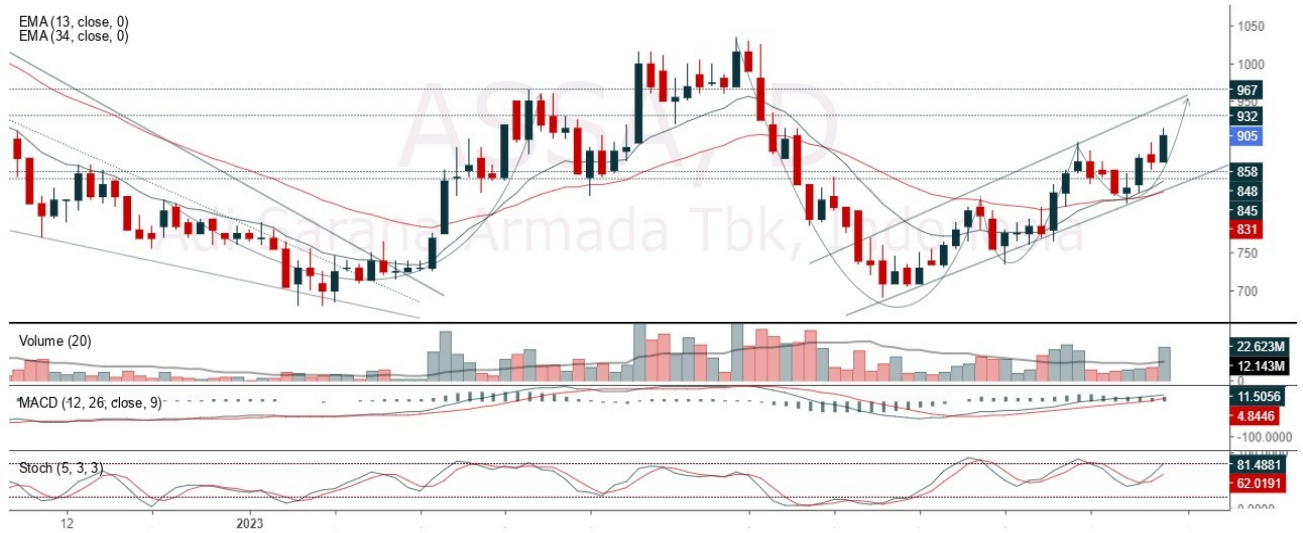


**JCI Range Today 6,868 – 6,897 (Support), 6,971 – 6,987 (Resistance)**



JCI closed lower with a bearish candle. The stochastic indicator is in the over bought area (potential for dead cross), MACD histogram is moving positive (bullish line) and volume is decreasing. If JCI is able to move bullish, there is a chance for JCI to go to the resistance at the range of 6,971–6,987. If it moves bearish, JCI is expected to weaken to the support range of 6,868 – 6,897.

**ASSA**



**(ASSA)** The price closed higher with a bullish candle. The price has the opportunity to strengthen again to the nearest resistance. Stochastic indicator is bullish, MACD histogram is moving in the positive direction (bullish line) and volume is increasing. Confirmation to buy if the next candle is bullish again or buy on support if it goes down first. We suggest being careful if it fails to stay above the support level. **(Trading Buy)**

**TRADING STRATEGY:**

1. Target Price: The price has a bullish opportunity to test the resistance level 935. If it breaks level 935 then the price will go to level 955. We recommend to be careful if the price fails to break through or turn around the support area.

2. Stop Loss: To minimize the risk of loss, we recommend placing a stop loss at level 875.

Entry Buy : 890 – 905  
 Target Price : 935 – 955  
 Support : 880 – 890  
 Cutloss : 875

**BRIS**



**(BRIS)** The price closed higher with a bullish candle. The price has the opportunity to strengthen again to the nearest resistance. The stochastic golden cross indicator, MACD histogram is negative (bearish line) and the volume is slightly decreasing. Confirmation to buy if the next candle is bullish again or buy on support if it goes down first. We suggest being careful if it fails to stay above the support level. **(Trading Buy)**

**TRADING STRATEGY:**

1. Target Price: The price has a bullish opportunity to test the resistance level 1,795. If it breaks level 1,795 then the price will go to level 1,820. We recommend to be careful if the price fails to break through or turn around the support area.

2. Stop Loss: To minimize the risk of loss, we recommend placing a stop loss at level 1,675.

Entry Buy : 1,700– 1,730  
 Target Price : 1,795– 1,820  
 Support : 1,680– 1,700  
 Cutloss : 1,675

**INCO**



**(INCO)** The price closed higher with a bullish candle. The price has the opportunity to strengthen again to the nearest resistance. Stochastic indicator is bullish, MACD histogram is moving positive (bullish line) and volume is increasing. Confirmation to buy if the next candle is bullish again or buy on support if it goes down first. We suggest being careful if it fails to stay above the support level. **(Trading Buy)**

**TRADING STRATEGY:**

1. Target Price: The price has a bullish opportunity to test the resistance level 7,200. If it breaks level 7,200 then the price will go to level 7,300. We recommend to be careful if the price fails to break through or turn around the support area.

2. Stop Loss: To minimize the risk of loss, we recommend placing a stop loss at level 6,750.

Entry Buy : 6,850–6,975  
Target Price : 7,200 – 7,300  
Support : 6,775 – 6850  
Cutloss : 6,750

**LPPF**



**(LPPF)** The price closed higher and formed a swing low. The price has the opportunity to strengthen again to the nearest resistance. Stochastic indicator is bullish, MACD histogram is moving positive (bullish line) and volume is decreasing. Confirmation to buy if the next candle is bullish again or buy on support if it goes down first. We suggest being careful if it fails to stay above the support level. **(Trading Buy)**

**TRADING STRATEGY:**

1. Target Price: The price has a bullish opportunity to test the resistance level 4,200. If it breaks level 4,270 then the price will go to level 4,200. We recommend to be careful if the price fails to break through or turn around the support area.

2. Stop Loss: To minimize the risk of loss, we recommend placing a stop loss at level 3,910.

Entry Buy : 3,980– 4,050  
 Target Price : 4,200 – 4,270  
 Support : 3,920– 3,980  
 Cutloss : 3,910


**Forecast – Technical Analysis**

Ticker	MA5	RSI Rec	MACD Trend	Recomm.	Pivot Point	Support		Resistance		Stop Loss Level
						1	2	1	2	
JCI	Negatif	OverBought	Positif	Sell	6,925	6,875	6,825	6,975	7,025	6,725
ACES	Positif	Oversold	Negatif	Spec. Buy	445	441	437	449	453	430
ADRO	Negatif	OverBought	Positif	Sell	3,085	3,060	3,025	3,120	3,145	2,980
AKRA	Negatif	OverBought	Negatif	Strong Sell	1,630	1,590	1,570	1,650	1,690	1,545
AMRT	Negatif	Trading	Negatif	Sell	2,865	2,825	2,775	2,915	2,955	2,730
ANTM	Positif	Trading	Positif	Spec. Buy	2,100	2,080	2,060	2,120	2,140	2,030
ARTO	Positif	Oversold	Negatif	Spec. Buy	2,010	1,945	1,905	2,050	2,115	1,875
ASII	Negatif	OverBought	Positif	Sell	6,675	6,650	6,575	6,750	6,775	6,475
BBCA	Negatif	OverBought	Positif	Sell	9,125	9,075	9,025	9,175	9,225	8,900
BBNI	Negatif	OverBought	Positif	Sell	9,525	9,475	9,400	9,600	9,650	9,275
BBRI	Negatif	OverBought	Positif	Sell	5,075	4,990	4,910	5,150	5,225	4,835
BBTN	Positif	Trading	Positif	Spec. Buy	1,255	1,245	1,235	1,265	1,275	1,215
BMRI	Negatif	Trading	Negatif	Sell	5,200	5,175	5,150	5,225	5,250	5,075
BRIS	Negatif	Trading	Negatif	Sell	1,700	1,660	1,625	1,735	1,775	1,600
BRPT	Negatif	Trading	Positif	Hold	825	815	805	835	845	790
BUKA	Positif	Oversold	Positif	Buy	233	226	221	238	245	218
CPIN	Negatif	Oversold	Positif	Spec. Buy	4,570	4,500	4,430	4,640	4,710	4,365
EMTK	Positif	Oversold	Positif	Buy	730	715	690	755	770	680
ESSA	Positif	Oversold	Negatif	Spec. Buy	730	720	710	740	750	700
EXCL	Positif	Oversold	Negatif	Spec. Buy	1,775	1,750	1,735	1,790	1,815	1,705
GOTO	Negatif	Oversold	Negatif	Specu. Buy	98	93	89	102	107	88
HRUM	Positif	Trading	Positif	Spec. Buy	1,525	1,510	1,490	1,545	1,560	1,470
ICBP	Positif	Trading	Positif	Spec. Buy	10,200	10,075	10,000	10,275	10,400	9,850
INCO	Negatif	Trading	Positif	Hold	6,675	6,500	6,350	6,825	7,000	6,250
INDF	Negatif	OverBought	Positif	Sell	6,450	6,400	6,325	6,525	6,575	6,225
INDY	Positif	Trading	Positif	Spec. Buy	2,585	2,505	2,445	2,645	2,725	2,405
INKP	Negatif	OverBought	Positif	Sell	7,900	7,825	7,725	8,000	8,075	7,600
INTP	Negatif	Trading	Positif	Hold	10,475	10,275	10,175	10,575	10,775	10,000
ITMG	Positif	Oversold	Negatif	Spec. Buy	33,750	33,550	33,300	34,000	34,200	32,800
JPFA	Positif	Oversold	Positif	Buy	1,065	1,045	1,025	1,085	1,105	1,010
KLBF	Negatif	Trading	Negatif	Sell	2,100	2,075	2,050	2,125	2,150	2,015
MDKA	Positif	Trading	Positif	Spec. Buy	3,985	3,950	3,905	4,030	4,065	3,845
MEDC	Negatif	Trading	Positif	Hold	1,010	985	965	1,030	1,055	950
PGAS	Negatif	Trading	Positif	Hold	1,440	1,425	1,415	1,450	1,465	1,395
PTBA	Negatif	OverBought	Positif	Sell	4,130	4,120	4,100	4,150	4,160	4,040
SCMA	Positif	Oversold	Negatif	Spec. Buy	170	166	163	173	177	160
SIDO	Positif	Trading	Negatif	Hold	810	800	790	820	830	780
SMGR	Positif	Oversold	Positif	Buy	6,025	5,975	5,925	6,075	6,125	5,850
SRTG	Positif	Oversold	Negatif	Spec. Buy	1,870	1,825	1,790	1,905	1,950	1,765
TBIG	Positif	Trading	Negatif	Hold	2,100	2,085	2,080	2,105	2,120	2,045
TINS	Negatif	Trading	Positif	Hold	1,015	1,010	1,000	1,025	1,030	985
TLKM	Positif	OverBought	Positif	Hold	4,380	4,310	4,230	4,460	4,530	4,165
TOWR	Negatif	OverBought	Positif	Sell	1,035	1,015	990	1,060	1,080	975
TPIA	Negatif	Trading	Positif	Hold	2,310	2,290	2,260	2,340	2,360	2,225
UNTR	Positif	OverBought	Positif	Hold	31,225	31,050	30,825	31,450	31,625	30,350
UNVR	Negatif	Oversold	Negatif	Specu. Buy	4,295	4,115	3,975	4,435	4,615	3,915

## OUR TEAM

**Sukarno Alatas**

Head of Equity Research

[sukarno@kiwoom.co.id](mailto:sukarno@kiwoom.co.id) | 021 5010 5800**Michelle Abadi**

Associate

[michelle@kiwoom.co.id](mailto:michelle@kiwoom.co.id) | 021 5010 5800**Abdul Azis Setyo Wibowo**

Equity Research Analyst

[azis@kiwoom.co.id](mailto:azis@kiwoom.co.id) | 021 5010 5800**Rizky Khaerunnisa**

Equity Research Analyst

[rizky@kiwoom.co.id](mailto:rizky@kiwoom.co.id) | 021 5010 5800**OTHER DISCLOSURES**

All Kiwoom's research reports made available to clients are simultaneously available on our own website <http://www.kiwoom.co.id/>. Not all research content is redistributed, e-mailed or made available to third-party aggregators. For all research reports available on a particular stock, please contact your sales representative. Any data discrepancies in this report could be the result of different calculations and/or adjustments.

**DISCLAIMER** This report has been prepared and issued by PT Kiwoom Sekuritas Indonesia. Information has been obtained from sources believed to be reliable but Kiwoom Securities do not warrant its completeness or accuracy. Forward-looking information or statements in this report contain information that is based on forecast of future results, estimates of amounts not yet determinable, assumptions, and therefore involve known and unknown risks and uncertainties which may cause the actual results, performance or achievements of their subject matter to be materially different from current expectations.

To the fullest extent allowed by law, PT Kiwoom Sekuritas Indonesia shall not be liable for any direct, indirect or consequential losses, loss of profits, damages, costs or expenses incurred or suffered by any person or organization arising from reliance on or use of any information contained on this report. The information that we provide should not be construed in any manner whatsoever as, personalized advice.

No mention of a particular security in this report constitutes a recommendation to buy, sell or hold that or any security, or that any particular security, portfolio of securities, transaction or investment strategy is suitable for any specific person. This report is being supplied to you solely for your information and may not be reproduced by, further distributed to or published in whole or in part by, any other person.