

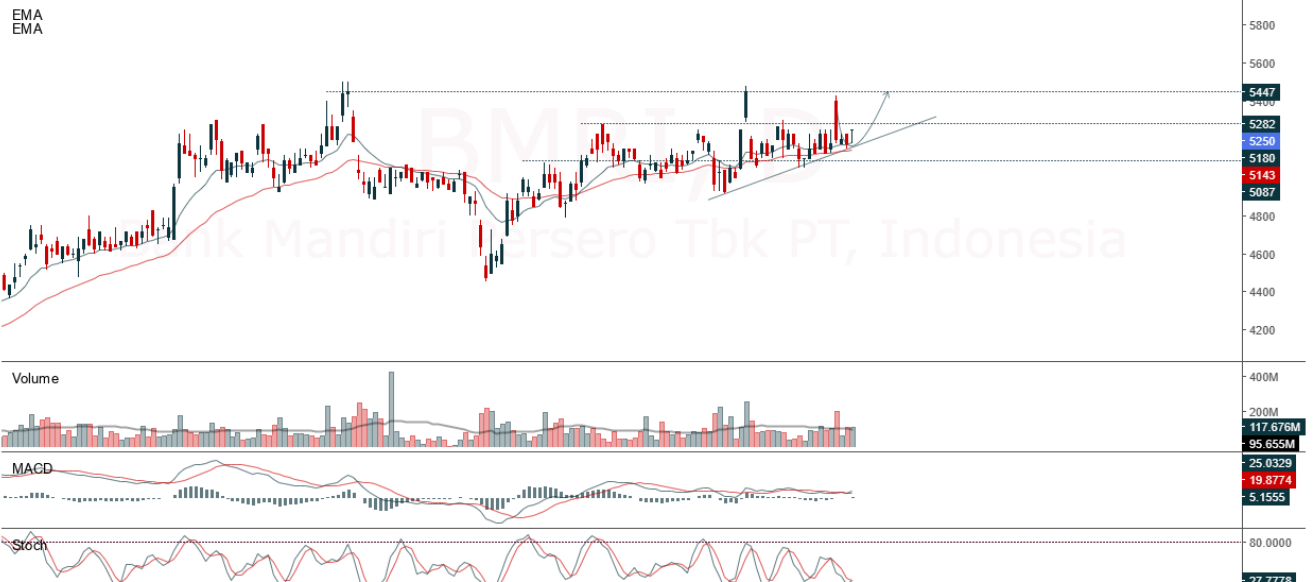
JCI Range Today 6,784 – 6,814 (Support), 6,920 – 6,945 (Resistance)



JCI closed lower with a bearish candle. The stochastic indicator is dead cross, MACD histogram is moving positive (bullish line) and volume is decreasing. If JCI is able to move bullish, there is a chance for JCI to go to the resistance at the range of 6,920 – 6,945. If it moves bearish, JCI is expected to weaken to the support range of 6,784 – 6,814.

BMRI

Bank Mandiri Persero Tbk PT, Indonesia, Jakarta:BMRI, D



(BMRI) The price closed higher with a bullish candle. The price has the opportunity to strengthen again to the nearest resistance. The stochastic golden cross indicator, MACD histogram is moving positive (golden cross line) and volume is increasing slightly. Confirmation to buy if the next candle is bullish again or buy on support if it goes down first. We suggest being careful if it fails to stay above the support level. **(Trading Buy)**

TRADING STRATEGY:

1. Target Price: The price has a bullish opportunity to test the resistance level 5,350. If it breaks level 5,350 then the price will go to level 5,400. We recommend to be careful if the price fails to break through or turn around the support area.

2. Stop Loss: To minimize the risk of loss, we recommend placing a stop loss at level 5,100.

Entry Buy : 5,175 – 5,250
 Target Price : 5,350 – 5,400
 Support : 5,125 – 5,175
 Cutloss : 5,100

INDF

Indofood Sukses Makmur Tbk PT, Indonesia, Jakarta:INDF, D

EMA (13, close, 0)
EMA (34, close, 0)



(INDF) The price closed higher with a bullish candle. The price has the opportunity to strengthen again to the nearest resistance. Stochastic indicator is bullish, MACD histogram is moving positive (bullish line) and volume is decreasing. Confirmation to buy if the next candle is bullish again or buy on support if it goes down first. We suggest being careful if it fails to stay above the support level. **(Trading Buy)**

TRADING STRATEGY:

1. Target Price: The price has a bullish opportunity to test the resistance level 6,625. If it breaks level 6,625 then the price will go to level 6,675. We recommend to be careful if the price fails to break through or turn around the support area.

2. Stop Loss: To minimize the risk of loss, we recommend placing a stop loss at level 6,325.

Entry Buy : 6,400 – 6,500
Target Price : 6,625 – 6,675
Support : 6,350 – 6,400
Cutloss : 6,325

JSMR

Jasa Marga Tbk, Indonesia, Jakarta:JSMR, D

EMA (13, close, 0)
EMA (34, close, 0)



(JSMR) The price closed higher with a bullish candle. The price has the opportunity to strengthen again to the nearest resistance. Stochastic indicator is bullish, MACD histogram is moving in the positive direction (bullish line) and volume is increasing. Confirmation to buy if the next candle is bullish again or buy on support if it goes down first. We suggest being careful if it fails to stay above the support level. **(Trading Buy)**

TRADING STRATEGY:

1. Target Price: The price has a bullish opportunity to test the resistance level 3,400. If it breaks level 3,400 then the price will go to level 3,430. We recommend to be careful if the price fails to break through or turn around the support area.

2. Stop Loss: To minimize the risk of loss, we recommend placing a stop loss at level 3,250.

Entry Buy : 3,290 – 3,340
Target Price : 3,400 – 3,430
Support : 3,260 – 3,290
Cutloss : 3,250

TLKM

Telkom Indonesia (Persero) Tbk PT, Indonesia, Jakarta:TLKM, D



(TLKM) The price closed lower and there are indications of a reversal. The price has the opportunity to strengthen again to the nearest resistance. Stochastic indicator is bearish, MACD histogram is moving negative (bullish line) and volume is increasing. Confirmation to buy if the next candle is bullish again or buy on support if it goes down first. We suggest being careful if it fails to stay above the support level. **(Trading Buy or buy on weakness)**

TRADING STRATEGY:

1.Target Price: The price has a bullish opportunity to test the resistance level 4,270. If it breaks level 4,320 then the price will go to level 4,320. We recommend to be careful if the price fails to break through or turn around the support area.

2. Stop Loss: To minimize the risk of loss, we recommend placing a stop loss at level 4,070.

Entry Buy : 4,130 – 4,190
Target Price : 4,270 – 4,320
Support : 4,080 – 4,130
Cutloss : 4,070

Forecast – Technical Analysis

Ticker	MA5	RSI Rec	MACD Trend	Recomm.	Pivot Point	Support		Resistance		Stop Loss Level
						1	2	1	2	
JCI	Negatif	OverBought	Positif	Sell	6,875	6,850	6,775	6,950	6,975	6,675
ACES	Negatif	Trading	Positif	Hold	447	442	437	452	457	430
ADRO	Negatif	OverBought	Positif	Sell	3,035	2,970	2,895	3,110	3,175	2,850
AKRA	Negatif	OverBought	Negatif	Strong Sell	1,615	1,600	1,590	1,625	1,640	1,565
AMRT	Negatif	Trading	Positif	Hold	2,895	2,865	2,815	2,945	2,975	2,770
ANTM	Positif	Trading	Positif	Spec. Buy	2,070	2,040	2,000	2,110	2,140	1,970
ARTO	Positif	Oversold	Negatif	Spec. Buy	2,110	2,060	2,020	2,150	2,200	1,990
ASII	Negatif	OverBought	Positif	Sell	6,700	6,650	6,525	6,825	6,875	6,425
BBCA	Negatif	OverBought	Positif	Sell	9,050	8,975	8,850	9,175	9,250	8,700
BBNI	Negatif	Trading	Positif	Hold	9,500	9,450	9,375	9,575	9,625	9,225
BBRI	Negatif	OverBought	Positif	Sell	5,150	5,100	5,025	5,225	5,275	4,935
BBTN	Positif	Trading	Positif	Spec. Buy	1,250	1,240	1,230	1,260	1,270	1,210
BMRI	Negatif	Trading	Negatif	Sell	5,225	5,225	5,150	5,300	5,300	5,075
BRIS	Positif	Trading	Negatif	Hold	1,705	1,685	1,655	1,735	1,755	1,630
BRPT	Negatif	Trading	Positif	Hold	835	820	810	845	860	795
BUKA	Positif	Trading	Positif	Spec. Buy	233	227	223	237	243	219
CPIN	Negatif	Trading	Positif	Hold	4,620	4,545	4,480	4,685	4,760	4,410
EMTK	Positif	Oversold	Negatif	Spec. Buy	705	680	665	720	745	655
ESSA	Negatif	Oversold	Negatif	Specu. Buy	670	655	645	680	695	635
EXCL	Positif	Oversold	Negatif	Spec. Buy	1,740	1,715	1,685	1,770	1,795	1,660
GOTO	Negatif	Trading	Positif	Hold	104	102	100	106	108	98
HRUM	Negatif	Trading	Positif	Hold	1,485	1,460	1,425	1,520	1,545	1,405
ICBP	Negatif	OverBought	Positif	Sell	10,450	10,375	10,225	10,600	10,675	10,075
INCO	Negatif	OverBought	Positif	Sell	6,975	6,925	6,825	7,075	7,125	6,725
INDF	Negatif	Trading	Positif	Hold	6,475	6,450	6,375	6,550	6,575	6,275
INDY	Positif	Trading	Positif	Spec. Buy	2,505	2,435	2,355	2,585	2,655	2,315
INKP	Negatif	Trading	Positif	Hold	7,700	7,600	7,450	7,850	7,950	7,325
INTP	Negatif	Trading	Positif	Hold	10,300	10,100	9,900	10,500	10,700	9,750
ITMG	Negatif	Oversold	Negatif	Specu. Buy	32,500	31,650	30,825	33,325	34,175	30,375
JPFA	Positif	Oversold	Negatif	Spec. Buy	1,040	1,030	1,010	1,060	1,070	995
KLBF	Negatif	Trading	Positif	Hold	2,085	2,050	1,995	2,140	2,175	1,965
MDKA	Positif	Trading	Negatif	Hold	3,870	3,845	3,820	3,895	3,920	3,760
MEDC	Positif	Trading	Positif	Spec. Buy	985	955	920	1,020	1,050	905
PGAS	Negatif	Trading	Positif	Hold	1,410	1,385	1,355	1,440	1,465	1,335
PTBA	Negatif	OverBought	Positif	Sell	3,860	3,860	3,860	3,860	3,860	3,800
SCMA	Positif	Oversold	Negatif	Spec. Buy	162	158	152	168	172	150
SIDO	Positif	Oversold	Negatif	Spec. Buy	790	780	770	800	810	760
SMGR	Positif	Oversold	Positif	Buy	5,900	5,825	5,700	6,025	6,100	5,625
SRTG	Negatif	Trading	Positif	Hold	1,830	1,785	1,745	1,870	1,915	1,715
TBIG	Positif	Trading	Negatif	Hold	2,005	1,920	1,835	2,090	2,175	1,805
TINS	Negatif	Trading	Positif	Hold	1,010	1,005	995	1,020	1,025	980
TLKM	Negatif	Trading	Negatif	Sell	4,190	4,155	4,100	4,245	4,280	4,035
TOWR	Negatif	OverBought	Positif	Sell	1,015	1,000	975	1,040	1,055	960
TPIA	Negatif	OverBought	Positif	Sell	2,350	2,335	2,300	2,385	2,400	2,265
UNTR	Positif	Trading	Negatif	Hold	26,900	26,900	26,900	26,900	26,900	26,500
UNVR	Negatif	OverBought	Positif	Sell	4,375	4,335	4,245	4,465	4,505	4,180

OUR TEAM

Sukarno Alatas

Head of Equity Research

sukarno@kiwoom.co.id | 021 5010 5800

Michelle Abadi

Associate

michelle@kiwoom.co.id | 021 5010 5800

Abdul Azis Setyo Wibowo

Equity Research Analyst

azis@kiwoom.co.id | 021 5010 5800

Rizky Khaerunnisa

Equity Research Analyst

rizky@kiwoom.co.id | 021 5010 5800



OTHER DISCLOSURES

All Kiwoom's research reports made available to clients are simultaneously available on our own website <http://www.kiwoom.co.id/>. Not all research content is redistributed, e-mailed or made available to third-party aggregators. For all research reports available on a particular stock, please contact your sales representative. Any data discrepancies in this report could be the result of different calculations and/or adjustments.

DISCLAIMER This report has been prepared and issued by PT Kiwoom Sekuritas Indonesia. Information has been obtained from sources believed to be reliable but Kiwoom Securities do not warrant its completeness or accuracy. Forward-looking information or statements in this report contain information that is based on forecast of future results, estimates of amounts not yet determinable, assumptions, and therefore involve known and unknown risks and uncertainties which may cause the actual results, performance or achievements of their subject matter to be materially different from current expectations.

To the fullest extent allowed by law, PT Kiwoom Sekuritas Indonesia shall not be liable for any direct, indirect or consequential losses, loss of profits, damages, costs or expenses incurred or suffered by any person or organization arising from reliance on or use of any information contained on this report. The information that we provide should not be construed in any manner whatsoever as, personalized advice.

No mention of a particular security in this report constitutes a recommendation to buy, sell or hold that or any security, or that any particular security, portfolio of securities, transaction or investment strategy is suitable for any specific person. This report is being supplied to you solely for your information and may not be reproduced by, further distributed to or published in whole or in part by, any other person.