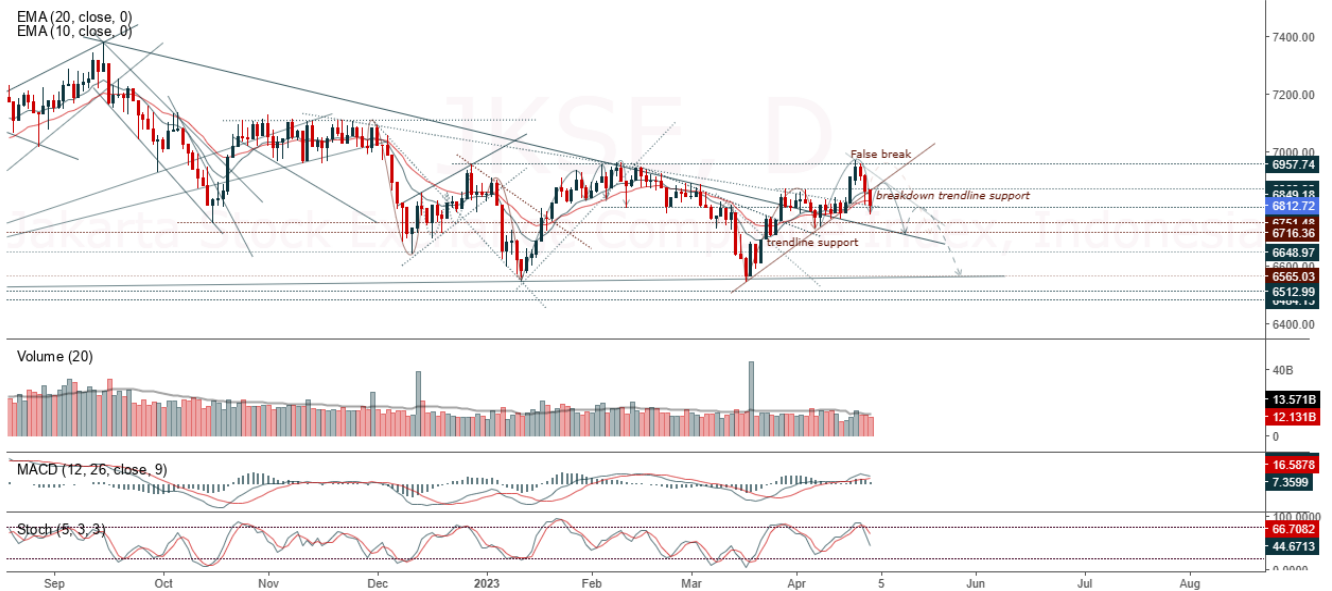


JCI Range Today 6,738 – 6,776 (Support), 6,865 – 6,877 (Resistance)

Jakarta Stock Exchange Composite Index, Indonesia, Jakarta:JKSE, D



JCI closed lower with a bearish candle. The stochastic indicator is bearish, MACD histogram is moving positive (bullish line) and volume is increasing slightly. If JCI is able to move bullish, there is a chance for JCI to go to the resistance at 6,865 – 6,877. If it moves bearish, JCI is expected to weaken to the support range 6,738 – 6,776.

ASSA

Adi Sarana Armada Tbk, Indonesia, Jakarta:ASSA, D



(ASSA) The price closed higher with a bullish candle. The price has the opportunity to strengthen again to the nearest resistance. The stochastic golden cross indicator, MACD histogram is moving positive (golden cross line) and volume is increasing slightly. Confirmation to buy if the next candle is bullish again or buy on support if it goes down first. We suggest being careful if it fails to stay above the support level. **(Trading Buy)**

TRADING STRATEGY:

1. Target Price: The price has a bullish opportunity to test the resistance level 950. If it breaks level 950 then the price will go to level 965. We recommend to be careful if the price fails to break through or turn around the support area.

2. Stop Loss: To minimize the risk of loss, we recommend placing a stop loss at level 890.

Entry Buy : 915 – 930
 Target Price : 950 – 965
 Support : 895 – 915
 Cutloss : 890

AMRT

Sumber Alfaria Trijaya Tbk, Indonesia, Jakarta:AMRT, D

EMA (13, close, 0)
EMA (34, close, 0)



(AMRT) The price closed higher with a bullish candle. The price has the opportunity to strengthen again to the nearest resistance. Stochastic indicator is bullish, MACD histogram is moving positive (bullish line) and volume is increasing. Confirmation to buy if the next candle is bullish again or buy on support if it goes down first. We suggest being careful if it fails to stay above the support level. **(Trading Buy)**

TRADING STRATEGY:

1. Target Price: The price has a bullish opportunity to test the resistance level 3,060. If it breaks level 3,060 then the price will go to level 3,100. We recommend to be careful if the price fails to break through or turn around the support area.

2. Stop Loss: To minimize the risk of loss, we recommend placing a stop loss at level 2,890.

Entry Buy	: 2,940 – 3,000
Target Price	: 3,060 – 3,100
Support	: 2,900 – 2,940
Cutloss	: 2,890

EXCL

XL Axiata Tbk PT, Indonesia, Jakarta:EXCL, D



(EXCL) The price closed higher with a bullish candle. The price has the opportunity to strengthen again to the nearest resistance. Stochastic indicator is bullish, MACD histogram is moving in the positive direction (bullish line) and volume has increased significantly. Confirmation to buy if the next candle is bullish again or buy on support if it goes down first. We suggest being careful if it fails to stay above the support level. **(Trading Buy)**

TRADING STRATEGY:

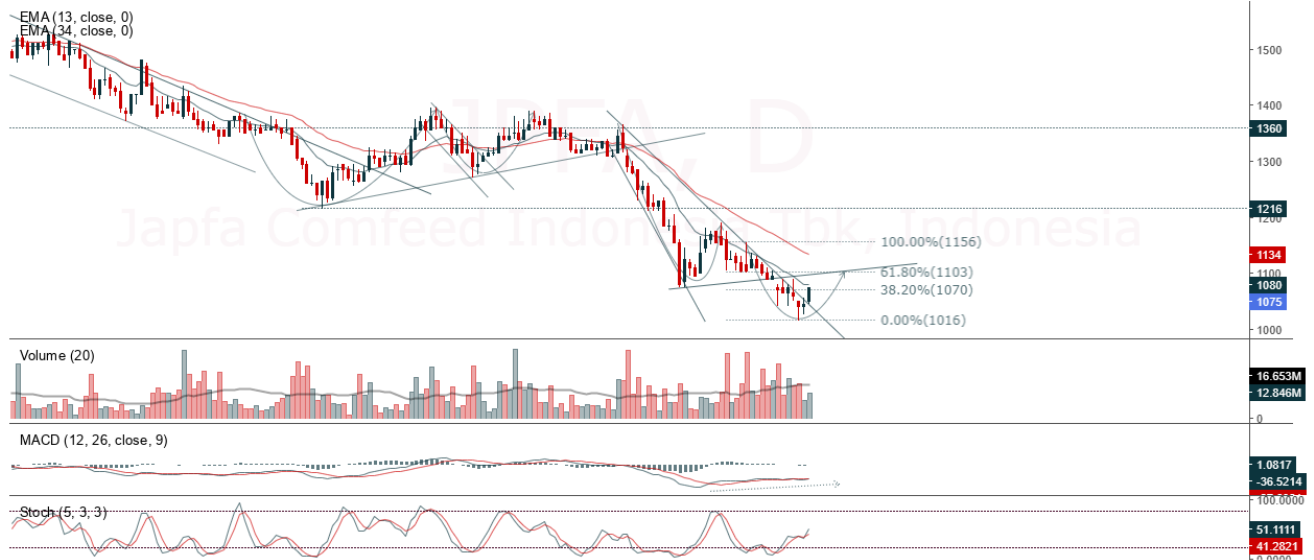
1. Target Price: The price has a bullish opportunity to test the resistance level 1,860. If it breaks level 1,860 then the price will go to level 1,890. We recommend to be careful if the price fails to break through or turn around the support area.

2. Stop Loss: To minimize the risk of loss, we recommend placing a stop loss at level 1,760.

Entry Buy : 1,780 – 1,820
 Target Price : 1,860 – 1,890
 Support : 1,765 – 1,780
 Cutloss : 1,760

JPFA

Japfa Comfeed Indonesia Tbk, Indonesia, Jakarta:JPFA, D



(JPFA) The price closed higher by forming a swing low. The price has the opportunity to strengthen again to the nearest resistance. Stochastic indicator is bullish, MACD histogram is moving in the positive direction (golden cross line) and volume is increasing. Confirmation to buy if the next candle is bullish again or buy on support if it goes down first. We suggest being careful if it fails to stay above the support level. **(Trading Buy)**

TRADING STRATEGY:

- 1.Target Price: The price has a bullish opportunity to test the resistance level 1,100. If it breaks level 1,100 then the price will go to level 1,115. We recommend to be careful if the price fails to break through or turn around the support area.
2. Stop Loss: To minimize the risk of loss, we recommend placing a stop loss at level 1,040.

Entry Buy : 1,055 – 1,075
Target Price : 1,100 – 1,115
Support : 1,045 – 1,055
Cutloss : 1,040

Forecast – Technical Analysis

Ticker	MA5	RSI Rec	MACD Trend	Recomm.	Pivot Point	Support		Resistance		Stop Loss Level
						1	2	1	2	
JCI	Negatif	Trading	Positif	Hold	6,825	6,800	6,750	6,875	6,925	6,650
ACES	Negatif	Oversold	Positif	Spec. Buy	449	441	437	453	461	430
ADRO	Negatif	Trading	Positif	Hold	2,975	2,900	2,855	3,020	3,095	2,810
AKRA	Positif	OverBought	Negatif	Sell	1,575	1,540	1,485	1,630	1,665	1,460
AMRT	Negatif	Trading	Positif	Hold	2,945	2,885	2,805	3,025	3,085	2,760
ANTM	Positif	Trading	Negatif	Hold	2,120	2,090	2,070	2,140	2,170	2,040
ARTO	Positif	Trading	Negatif	Hold	2,155	2,095	2,045	2,205	2,265	2,010
ASII	Negatif	OverBought	Positif	Sell	6,650	6,575	6,475	6,750	6,825	6,375
BBCA	Positif	OverBought	Positif	Hold	8,975	8,900	8,800	9,075	9,150	8,675
BBNI	Negatif	Trading	Positif	Hold	9,500	9,450	9,350	9,600	9,650	9,200
BBRI	Negatif	OverBought	Positif	Sell	5,150	5,075	4,975	5,250	5,325	4,900
BBTN	Positif	Trading	Positif	Spec. Buy	1,235	1,225	1,205	1,255	1,265	1,190
BMRI	Negatif	Trading	Positif	Hold	5,225	5,200	5,125	5,300	5,325	5,050
BRIS	Positif	Trading	Negatif	Hold	1,705	1,690	1,675	1,720	1,735	1,650
BRPT	Negatif	Trading	Positif	Hold	825	815	795	845	855	785
BUKA	Negatif	Trading	Positif	Hold	233	229	225	237	241	221
CPIN	Negatif	Trading	Positif	Hold	4,685	4,605	4,515	4,775	4,855	4,445
EMTK	Positif	Oversold	Negatif	Spec. Buy	680	665	650	695	710	640
ESSA	Positif	Oversold	Negatif	Spec. Buy	625	600	590	635	660	580
EXCL	Positif	Oversold	Negatif	Spec. Buy	1,770	1,705	1,625	1,850	1,915	1,600
GOTO	Negatif	Trading	Positif	Hold	101	99	96	104	106	95
HRUM	Positif	Trading	Negatif	Hold	1,455	1,425	1,400	1,480	1,510	1,375
ICBP	Negatif	OverBought	Positif	Sell	10,700	10,550	10,425	10,825	10,975	10,275
INCO	Negatif	OverBought	Positif	Sell	6,925	6,875	6,750	7,050	7,100	6,650
INDF	Negatif	Trading	Positif	Hold	6,700	6,600	6,450	6,850	6,950	6,350
INDY	Positif	Trading	Negatif	Hold	2,415	2,330	2,295	2,450	2,535	2,260
INKP	Negatif	Trading	Positif	Hold	7,300	7,150	6,975	7,475	7,625	6,875
INTP	Negatif	Trading	Positif	Hold	10,000	9,925	9,725	10,200	10,275	9,575
ITMG	Positif	Oversold	Negatif	Spec. Buy	31,575	30,950	30,000	32,525	33,150	29,550
JPFA	Positif	Oversold	Negatif	Spec. Buy	1,060	1,050	1,030	1,080	1,090	1,015
KLBF	Negatif	Trading	Positif	Hold	2,050	2,040	2,010	2,080	2,090	1,980
MDKA	Positif	Oversold	Negatif	Spec. Buy	3,900	3,830	3,790	3,940	4,010	3,735
MEDC	Positif	Trading	Negatif	Hold	940	915	895	960	985	880
PGAS	Positif	Trading	Positif	Spec. Buy	1,385	1,370	1,350	1,405	1,420	1,330
PTBA	Positif	Trading	Negatif	Hold	3,590	3,590	3,590	3,590	3,590	3,535
SCMA	Positif	Oversold	Negatif	Spec. Buy	159	155	152	162	166	149
SIDO	Negatif	Trading	Negatif	Sell	800	790	780	810	820	770
SMGR	Positif	Oversold	Positif	Buy	5,875	5,800	5,725	5,950	6,025	5,625
SRTG	Positif	Oversold	Negatif	Spec. Buy	1,750	1,720	1,670	1,800	1,830	1,645
TBIG	Positif	Oversold	Negatif	Spec. Buy	1,905	1,790	1,685	2,010	2,125	1,660
TINS	Positif	Trading	Positif	Spec. Buy	1,000	990	975	1,015	1,025	960
TLKM	Positif	Trading	Negatif	Hold	4,160	4,115	4,040	4,235	4,280	3,975
TOWR	Negatif	Trading	Positif	Hold	995	975	955	1,015	1,035	940
TPIA	Negatif	OverBought	Positif	Sell	2,325	2,300	2,265	2,360	2,385	2,230
UNTR	Positif	Oversold	Negatif	Spec. Buy	25,025	25,025	25,025	25,025	25,025	24,650
UNVR	Negatif	OverBought	Positif	Sell	4,395	4,365	4,325	4,435	4,465	4,260

OUR TEAM

Sukarno Alatas

Head of Equity Research

sukarno@kiwoom.co.id | 021 5010 5800**Michelle Abadi**

Associate

michelle@kiwoom.co.id | 021 5010 5800**Abdul Azis Setyo Wibowo**

Equity Research Analyst

azis@kiwoom.co.id | 021 5010 5800**Rizky Khaerunnisa**

Equity Research Analyst

rizky@kiwoom.co.id | 021 5010 5800**OTHER DISCLOSURES**

All Kiwoom's research reports made available to clients are simultaneously available on our own website <http://www.kiwoom.co.id/>. Not all research content is redistributed, e-mailed or made available to third-party aggregators. For all research reports available on a particular stock, please contact your sales representative. Any data discrepancies in this report could be the result of different calculations and/or adjustments.

DISCLAIMER This report has been prepared and issued by PT Kiwoom Sekuritas Indonesia. Information has been obtained from sources believed to be reliable but Kiwoom Securities do not warrant its completeness or accuracy. Forward-looking information or statements in this report contain information that is based on forecast of future results, estimates of amounts not yet determinable, assumptions, and therefore involve known and unknown risks and uncertainties which may cause the actual results, performance or achievements of their subject matter to be materially different from current expectations.

To the fullest extent allowed by law, PT Kiwoom Sekuritas Indonesia shall not be liable for any direct, indirect or consequential losses, loss of profits, damages, costs or expenses incurred or suffered by any person or organization arising from reliance on or use of any information contained on this report. The information that we provide should not be construed in any manner whatsoever as, personalized advice.

No mention of a particular security in this report constitutes a recommendation to buy, sell or hold that or any security, or that any particular security, portfolio of securities, transaction or investment strategy is suitable for any specific person. This report is being supplied to you solely for your information and may not be reproduced by, further distributed to or published in whole or in part by, any other person.