

JCI Range Today 6,780 – 6,814 (Support), 6,877 – 6,910 (Resistance)

Jakarta Stock Exchange Composite Index, Indonesia, Jakarta:JKSE, D



JCI closed higher with a bullish candle. Stochastic indicator is flat, MACD histogram is moving positive (bullish line) and volume is increasing. If JCI is able to move bullish, there is a chance for JCI to go to the resistance at 6,877 – 6,910. If it moves bearish, JCI is expected to weaken to the support range 6,780 – 6,814.

ACES

Ace Hardware Indonesia Tbk, Indonesia, Jakarta:ACES, D



(ACES) The price closed higher with a bullish candle. The price has the opportunity to strengthen again to the nearest resistance. Stochastic indicator is bullish, MACD histogram is moving positive (golden cross line) and volume is increasing. Confirmation to buy if the next candle is bullish again or buy on support if it goes down first. We suggest being careful if it fails to stay above the support level. **(Trading Buy)**

TRADING STRATEGY:

1. Target Price: The price has a bullish opportunity to test the resistance level 474. If it breaks level 474 then the price will go to level 480. We recommend to be careful if the price fails to break through or turn around the support area.

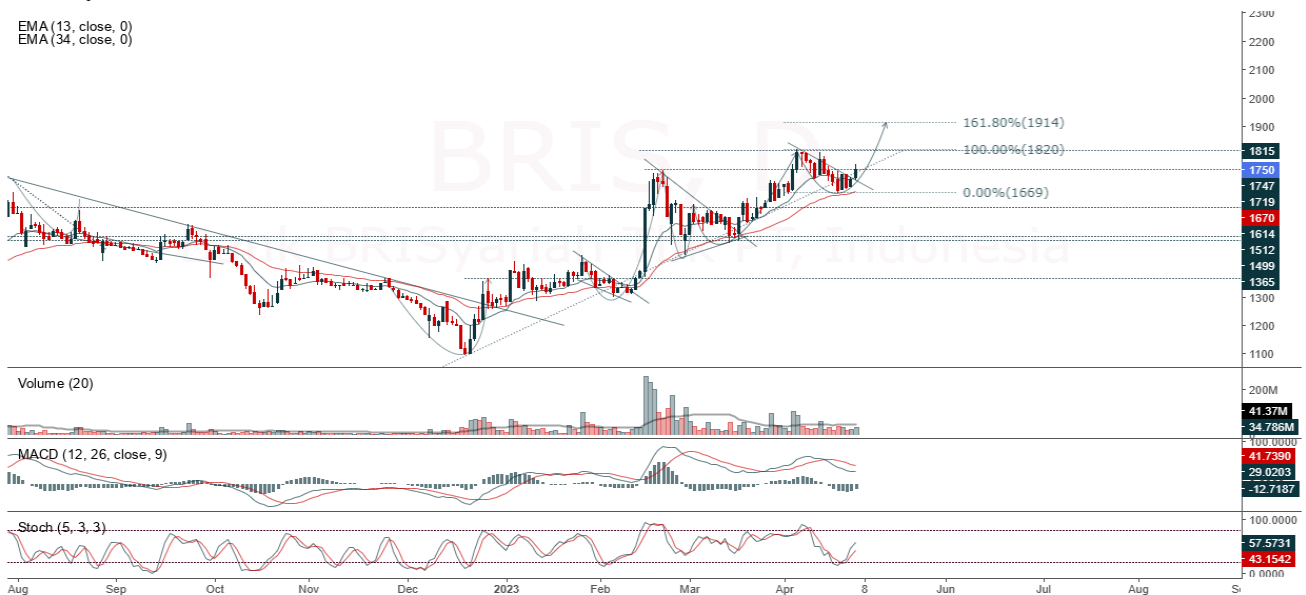
2. Stop Loss: To minimize the risk of loss, we recommend placing a stop loss at level 446.

Entry Buy : 454 – 464
 Target Price : 474 – 480
 Support : 448 – 454
 Cutloss : 446

BRIS

Bank BRISyariah Tbk PT, Indonesia, Jakarta:BRIS, D

EMA (13, close, 0)
EMA (34, close, 0)



(BRIS) The price closed higher with a bullish candle. The price has the opportunity to strengthen again to the nearest resistance. Stochastic indicator is bullish, MACD histogram is moving positive (bullish line) and volume is increasing. Confirmation to buy if the next candle is bullish again or buy on support if it goes down first. We suggest being careful if it fails to stay above the support level. **(Trading Buy)**

TRADING STRATEGY:

1. Target Price: The price has a bullish opportunity to test the resistance level 1,780. If it breaks level 1,780 then the price will go to level 1,810. We recommend to be careful if the price fails to break through or turn around the support area.

2. Stop Loss: To minimize the risk of loss, we recommend placing a stop loss at level 1,705.

Entry Buy : 1,730 – 1,750
Target Price : 1,780 – 1,810
Support : 1,710 – 1,730
Cutloss : 1,705

CPIN

Charoen Pokphand Indonesia TBK PT, Indonesia, Jakarta:CPIN, D

EMA (13, close, 0)
EMA (34, close, 0)



(CPIN) The price closed higher with a bullish candle. The price has the opportunity to strengthen again to the nearest resistance. Stochastic indicator is bullish, MACD histogram is moving positive (bullish line) and volume is decreasing. Confirmation to buy if the next candle is bullish again or buy on support if it goes down first. We suggest being careful if it fails to stay above the support level. **(Trading Buy)**

TRADING STRATEGY:

1. Target Price: The price has a bullish opportunity to test the resistance level 4,920. If it breaks level 4,920 then the price will go to level 4,990. We recommend to be careful if the price fails to break through or turn around the support area.

2. Stop Loss: To minimize the risk of loss, we recommend placing a stop loss at level 4,710.

Entry Buy : 4,760 – 4,810
Target Price : 4,920 – 4,990
Support : 4,720 – 4,760
Cutloss : 4,710

MYOR

Mayora Indah Tbk, Indonesia, Jakarta:MYOR, D

EMA
EMA



(MYOR) The price closed higher by forming a swing low. The price has the opportunity to strengthen again to the nearest resistance. Stochastic indicator is bullish, MACD histogram is moving in the positive direction (has potential for golden cross line) and volume is increasing. Confirmation to buy if the next candle is bullish again or buy on support if it goes down first. We suggest being careful if it fails to stay above the support level. **(Trading Buy)**

TRADING STRATEGY:

1. Target Price: The price has a bullish opportunity to test the resistance level 2,710. If it breaks level 2,710 then the price will go to level 2,740. We recommend to be careful if the price fails to break through or turn around the support area.

2. Stop Loss: To minimize the risk of loss, we recommend placing a stop loss at level 2,580.

Entry Buy : 2,610 – 2,650
Target Price : 2,710 – 2,740
Support : 2,590 – 2,610
Cutloss : 2,580

Forecast – Technical Analysis

Ticker	MA5	RSI Rec	MACD Trend	Recomm.	Pivot Point	Support		Resistance		Stop Loss Level
						1	2	1	2	
JCI	Positif	Trading	Positif	Spec. Buy	6,825	6,800	6,750	6,850	6,875	6,650
ACES	Negatif	Trading	Positif	Hold	457	448	439	466	475	432
ADRO	Positif	Trading	Positif	Spec. Buy	2,940	2,875	2,840	2,975	3,040	2,795
AKRA	Positif	Trading	Negatif	Hold	1,555	1,540	1,515	1,580	1,595	1,495
AMRT	Negatif	OverBought	Positif	Sell	3,005	2,975	2,935	3,045	3,075	2,890
ANTM	Positif	Trading	Negatif	Hold	2,135	2,115	2,095	2,155	2,175	2,060
ARTO	Negatif	Trading	Positif	Hold	2,155	2,125	2,085	2,195	2,225	2,050
ASII	Positif	OverBought	Positif	Hold	6,600	6,575	6,525	6,650	6,675	6,425
BBCA	Positif	Trading	Positif	Spec. Buy	8,950	8,900	8,800	9,050	9,100	8,675
BBNI	Positif	Trading	Positif	Spec. Buy	9,350	9,275	9,200	9,425	9,500	9,050
BBRI	Negatif	OverBought	Positif	Sell	5,150	5,100	5,050	5,200	5,250	4,960
BBTN	Positif	Trading	Positif	Spec. Buy	1,225	1,215	1,195	1,245	1,255	1,180
BMRI	Negatif	Trading	Positif	Hold	5,175	5,125	5,075	5,225	5,275	5,000
BRIS	Negatif	Trading	Negatif	Sell	1,735	1,710	1,680	1,765	1,790	1,655
BRPT	Negatif	Trading	Positif	Hold	815	805	795	825	835	780
BUKA	Negatif	Trading	Positif	Hold	239	232	227	244	251	224
CPIN	Negatif	Trading	Positif	Hold	4,785	4,725	4,665	4,845	4,905	4,595
EMTK	Positif	Oversold	Negatif	Spec. Buy	690	670	655	705	725	645
ESSA	Positif	Strong Buy	Negatif	Buy	640	615	605	650	675	595
EXCL	Negatif	Trading	Negatif	Sell	1,825	1,805	1,775	1,855	1,875	1,750
GOTO	Negatif	Trading	Positif	Hold	104	98	92	110	116	91
HRUM	Positif	Oversold	Negatif	Spec. Buy	1,450	1,435	1,405	1,480	1,495	1,385
ICBP	Negatif	OverBought	Positif	Sell	10,750	10,650	10,525	10,875	10,975	10,350
INCO	Negatif	OverBought	Positif	Sell	6,950	6,850	6,750	7,050	7,150	6,650
INDF	Negatif	OverBought	Positif	Sell	6,625	6,550	6,475	6,700	6,775	6,375
INDY	Positif	Trading	Negatif	Hold	2,360	2,285	2,230	2,415	2,490	2,195
INKP	Positif	Oversold	Positif	Buy	7,175	7,075	7,000	7,250	7,350	6,875
INTP	Positif	Trading	Positif	Spec. Buy	10,000	9,925	9,850	10,075	10,150	9,700
ITMG	Positif	Oversold	Negatif	Spec. Buy	31,500	31,050	30,725	31,825	32,275	30,250
JPFA	Positif	Oversold	Positif	Buy	1,095	1,075	1,060	1,110	1,130	1,040
KLBF	Negatif	Trading	Positif	Hold	2,070	2,050	2,020	2,100	2,120	1,990
MDKA	Positif	Oversold	Negatif	Spec. Buy	3,910	3,870	3,830	3,950	3,990	3,775
MEDC	Positif	Oversold	Negatif	Spec. Buy	920	890	870	940	970	855
PGAS	Positif	Trading	Positif	Spec. Buy	1,385	1,375	1,360	1,400	1,410	1,340
PTBA	Positif	Oversold	Negatif	Spec. Buy	3,480	3,350	3,260	3,570	3,700	3,210
SCMA	Positif	Oversold	Negatif	Spec. Buy	159	155	154	160	164	151
SIDO	Positif	Trading	Negatif	Hold	810	800	795	815	825	780
SMGR	Positif	Oversold	Positif	Buy	5,750	5,675	5,575	5,850	5,925	5,475
SRTG	Positif	Oversold	Negatif	Spec. Buy	1,750	1,710	1,690	1,770	1,810	1,660
TBIG	Positif	Trading	Negatif	Hold	2,020	1,960	1,905	2,075	2,135	1,875
TINS	Positif	Trading	Positif	Spec. Buy	995	985	980	1,000	1,010	965
TLKM	Positif	Trading	Negatif	Hold	4,165	4,135	4,115	4,185	4,215	4,050
TOWR	Positif	Trading	Positif	Spec. Buy	995	980	955	1,020	1,035	940
TPIA	Positif	Trading	Positif	Spec. Buy	2,295	2,275	2,235	2,335	2,355	2,200
UNTR	Positif	Oversold	Negatif	Spec. Buy	24,725	24,475	24,250	24,950	25,200	23,875
UNVR	Negatif	OverBought	Positif	Sell	4,435	4,385	4,355	4,465	4,515	4,285

OUR TEAM

Sukarno Alatas

Head of Equity Research

sukarno@kiwoom.co.id | 021 5010 5800**Michelle Abadi**

Associate

michelle@kiwoom.co.id | 021 5010 5800**Abdul Azis Setyo Wibowo**

Equity Research Analyst

azis@kiwoom.co.id | 021 5010 5800**Rizky Khaerunnisa**

Equity Research Analyst

rizky@kiwoom.co.id | 021 5010 5800**OTHER DISCLOSURES**

All Kiwoom's research reports made available to clients are simultaneously available on our own website <http://www.kiwoom.co.id/>. Not all research content is redistributed, e-mailed or made available to third-party aggregators. For all research reports available on a particular stock, please contact your sales representative. Any data discrepancies in this report could be the result of different calculations and/or adjustments.

DISCLAIMER This report has been prepared and issued by PT Kiwoom Sekuritas Indonesia. Information has been obtained from sources believed to be reliable but Kiwoom Securities do not warrant its completeness or accuracy. Forward-looking information or statements in this report contain information that is based on forecast of future results, estimates of amounts not yet determinable, assumptions, and therefore involve known and unknown risks and uncertainties which may cause the actual results, performance or achievements of their subject matter to be materially different from current expectations.

To the fullest extent allowed by law, PT Kiwoom Sekuritas Indonesia shall not be liable for any direct, indirect or consequential losses, loss of profits, damages, costs or expenses incurred or suffered by any person or organization arising from reliance on or use of any information contained on this report. The information that we provide should not be construed in any manner whatsoever as, personalized advice.

No mention of a particular security in this report constitutes a recommendation to buy, sell or hold that or any security, or that any particular security, portfolio of securities, transaction or investment strategy is suitable for any specific person. This report is being supplied to you solely for your information and may not be reproduced by, further distributed to or published in whole or in part by, any other person.