

JCI Range Today 6,641 – 6,691 (Support), 6,775 – 6,793 (Resistance)

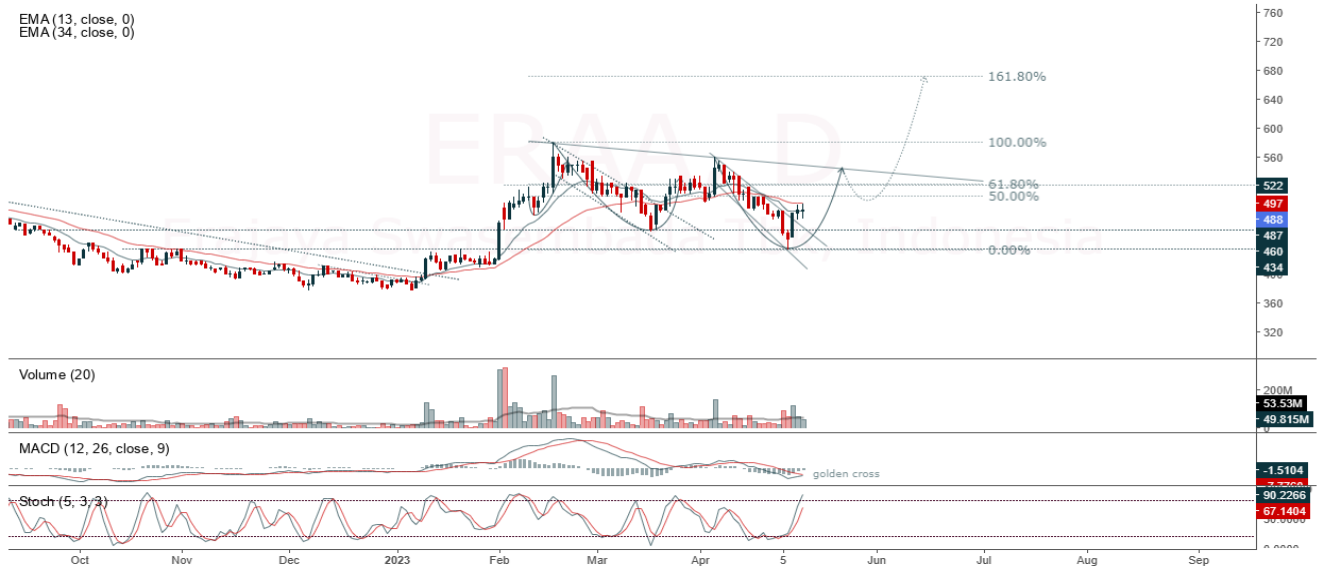


JCI closed lower and is testing support. The stochastic indicator is weakening, MACD histogram is negative (bearish line) and volume is decreasing. If it moves bearish, JCI is expected to weaken to the support range of 6,641 – 6,691. If JCI is able to move bullish, there is a chance for JCI to go to the resistance at the range of 6,775 – 6,793.

ERAA

Erajaya Swasembada Tbk, Indonesia, Jakarta:ERAA, D

EMA (13, close, 0)
EMA (34, close, 0)



(ERAA) The price closed higher with a bullish candle. The price has the opportunity to strengthen to the nearest resistance. Stochastic indicator is bullish, MACD histogram is moving in the positive direction (potential for golden cross line) and volume is neutral. Confirmation to buy if the next candle is bullish again or buy on support if it goes down first. We suggest being careful if it fails to stay above the support level. **(Trading Buy)**

TRADING STRATEGY:

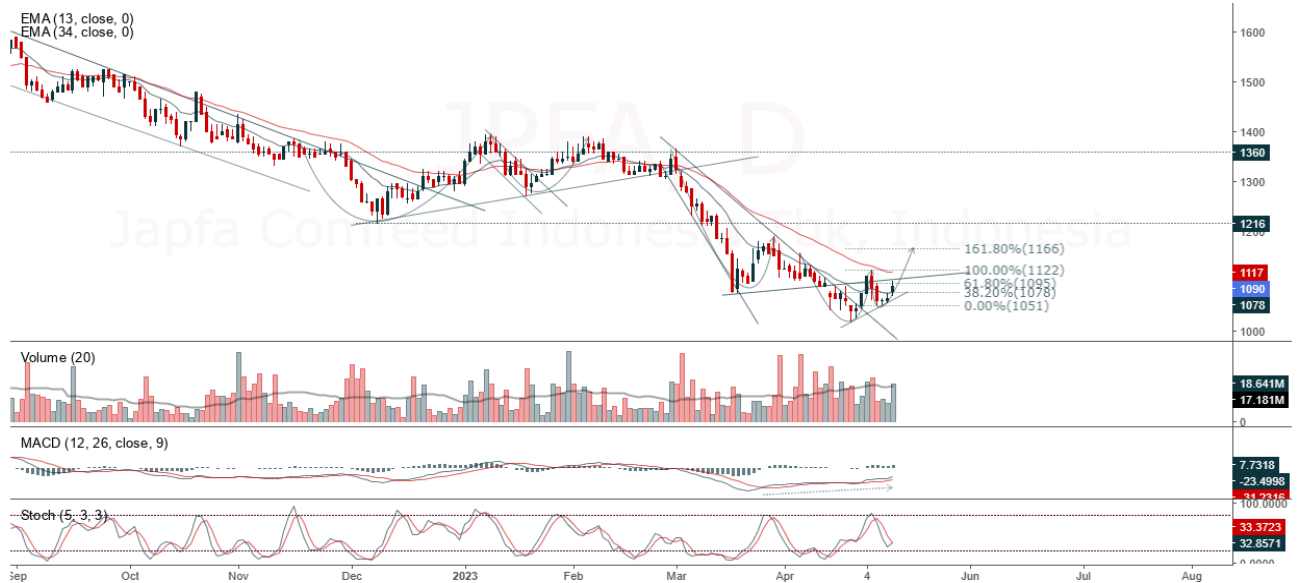
1. Target Price: The price has a bullish opportunity to test the resistance level 500. If it breaks level 500 then the price will go to level 510. We recommend to be careful if the price fails to break through or turn around the support area.

2. Stop Loss: To minimize the risk of loss, we recommend placing a stop loss at level 472.

Entry Buy : 480 – 488
Target Price : 500 – 510
Support : 474 – 480
Cutloss : 472

JPFA

Japfa Comfeed Indonesia Tbk, Indonesia, Jakarta:JPFA, D



(JPFA) The price closed higher by forming a swing low. The price has the opportunity to strengthen again to the nearest resistance. Stochastic golden cross indicator, MACD histogram is moving positive (bullish line) and volume is increasing. Confirmation to buy if the next candle is bullish again or buy on support if it goes down first. We suggest being careful if it fails to stay above the support level. **(Trading Buy)**

TRADING STRATEGY:

1. Target Price: The price has a bullish opportunity to test the resistance level 1,110. If it breaks level 1,110 then the price will go to level 1,120. We recommend to be careful if the price fails to break through or turn around the support area.

2. Stop Loss: To minimize the risk of loss, we recommend placing a stop loss at level 1,055.

Entry Buy : 1,075 – 1,090
 Target Price : 1,110 – 1,120
 Support : 1,060 – 1,075
 Cutloss : 1,055

KLBF

Kalbe Farma Tbk PT, Indonesia, Jakarta:KLBF, D

EMA
EMA



(KLBF) The price closed higher with a bullish candle. The price has the opportunity to test the nearest resistance again. The stochastic indicator has a potential golden cross, MACD histogram is moving positive (bullish line) and volume is increasing. Confirmation to buy if the next candle is bullish again or buy on support if it goes down first. We suggest being careful if it fails to stay above the support level. **(Trading Buy)**

TRADING STRATEGY:

1. Target Price: The price has a bullish opportunity to test the resistance level 2,170. If it breaks level 2,170 then the price will go to level 2,210. We recommend to be careful if the price fails to break through or turn around the support area.

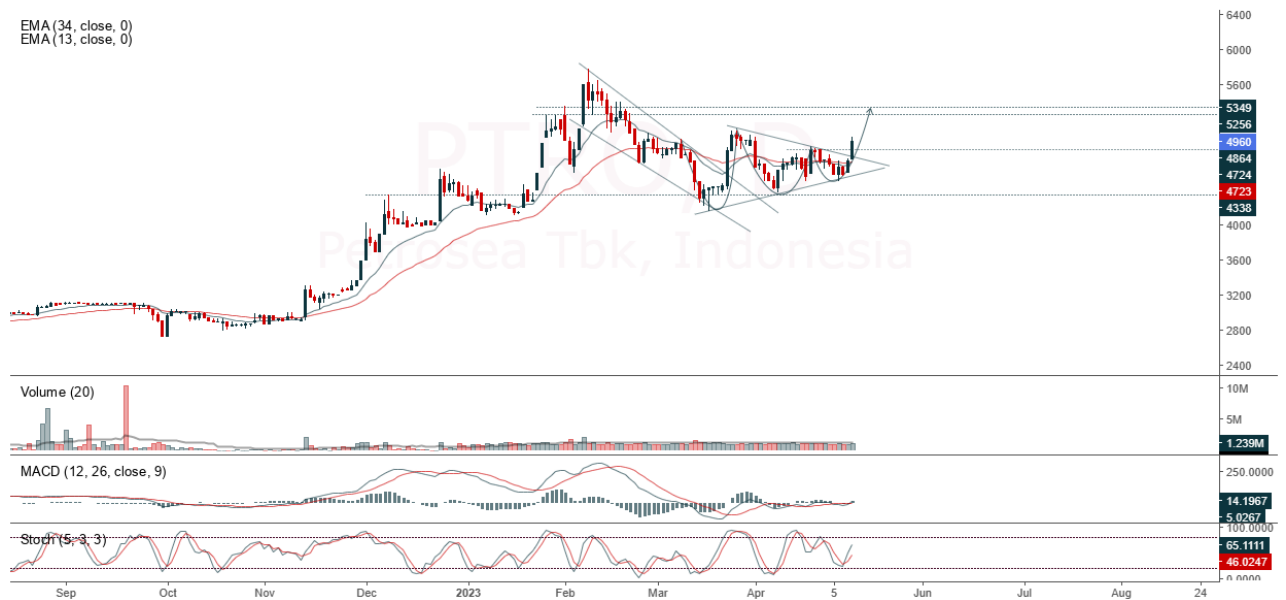
2. Stop Loss: To minimize the risk of loss, we recommend placing a stop loss at level 2,050.

Entry Buy : 2,100 – 2,130
Target Price : 2,170 – 2,210
Support : 2,060 – 2,100
Cutloss : 2,050

PTRO

Petrosea Tbk, Indonesia, Jakarta:PTRO, D

EMA (34, close, 0)
EMA (13, close, 0)



(PTRO) The price closed higher with a bullish candle. The price has the opportunity to strengthen again to the nearest resistance. Stochastic indicator is bullish, MACD histogram is moving positive (bullish line) and volume is increasing. Confirmation to buy if the next candle is bullish again or buy on support if it goes down first. We suggest being careful if it fails to stay above the support level. **(Trading Buy)**

TRADING STRATEGY:

- 1.Target Price: The price has a bullish opportunity to test the resistance level 5,075. If it breaks level 5,075 then the price will go to level 5,175. We recommend to be careful if the price fails to break through or turn around the support area.
2. Stop Loss: To minimize the risk of loss, we recommend placing a stop loss at level 4,790.

Entry Buy : 4,860 – 4,970
Target Price : 5,075 – 5,175
Support : 4,800 – 4,860
Cutloss : 4,790

Forecast – Technical Analysis

Ticker	MA5	RSI Rec	MACD Trend	Recomm.	Pivot Point	Support		Resistance		Stop Loss Level
						1	2	1	2	
JCI	Positif	Trading	Negatif	Hold	6,775	6,725	6,675	6,825	6,875	6,575
ACES	Negatif	OverBought	Positif	Sell	540	535	515	560	565	510
ADRO	Positif	Trading	Negatif	Hold	2,860	2,765	2,670	2,955	3,050	2,625
AKRA	Positif	Oversold	Negatif	Spec. Buy	1,390	1,365	1,330	1,425	1,450	1,310
AMRT	Positif	Trading	Positif	Spec. Buy	2,905	2,870	2,825	2,950	2,985	2,785
ANTM	Positif	Trading	Negatif	Hold	2,060	2,035	2,010	2,085	2,110	1,975
ARTO	Negatif	Trading	Positif	Hold	2,375	2,220	2,145	2,450	2,605	2,115
ASII	Positif	Trading	Negatif	Hold	6,275	6,225	6,100	6,400	6,450	6,025
BBCA	Positif	Trading	Negatif	Hold	8,850	8,825	8,750	8,925	8,950	8,625
BBNI	Positif	Trading	Negatif	Hold	9,125	9,100	9,025	9,200	9,225	8,900
BBRI	Negatif	OverBought	Positif	Sell	5,150	5,125	5,075	5,200	5,225	5,000
BBTN	Negatif	Trading	Positif	Hold	1,285	1,275	1,260	1,300	1,310	1,240
BMRI	Positif	Trading	Negatif	Hold	5,075	5,050	5,000	5,125	5,150	4,925
BRIS	Negatif	OverBought	Negatif	Strong Sell	1,775	1,755	1,735	1,795	1,815	1,710
BRPT	Negatif	Trading	Positif	Hold	830	820	815	835	845	800
BUKA	Positif	Trading	Positif	Spec. Buy	230	228	226	232	234	223
CPIN	Positif	Trading	Positif	Spec. Buy	4,705	4,635	4,605	4,735	4,805	4,535
EMTK	Negatif	Trading	Positif	Hold	720	710	695	735	745	685
ESSA	Positif	Oversold	Negatif	Spec. Buy	625	600	575	650	675	565
EXCL	Negatif	Trading	Positif	Hold	1,960	1,925	1,905	1,980	2,015	1,875
GOTO	Negatif	OverBought	Positif	Sell	117	113	109	121	125	107
HRUM	Positif	Oversold	Negatif	Spec. Buy	1,395	1,375	1,355	1,415	1,435	1,335
ICBP	Negatif	OverBought	Positif	Sell	10,900	10,850	10,700	11,050	11,100	10,550
INCO	Positif	Trading	Positif	Spec. Buy	6,900	6,825	6,700	7,025	7,100	6,575
INDF	Negatif	OverBought	Positif	Sell	6,850	6,775	6,700	6,925	7,000	6,575
INDY	Positif	Oversold	Negatif	Spec. Buy	2,130	2,100	2,070	2,160	2,190	2,040
INKP	Negatif	Trading	Negatif	Sell	7,275	7,200	7,075	7,400	7,475	6,975
INTP	Negatif	Trading	Positif	Hold	10,200	10,100	9,975	10,325	10,425	9,825
ITMG	Positif	Oversold	Negatif	Spec. Buy	28,825	28,200	27,625	29,400	30,025	27,200
JPFA	Positif	Trading	Positif	Spec. Buy	1,085	1,070	1,055	1,100	1,115	1,040
KLBF	Negatif	Trading	Positif	Hold	2,100	2,065	2,030	2,135	2,170	1,995
MDKA	Positif	Oversold	Negatif	Spec. Buy	3,360	3,325	3,290	3,395	3,430	3,240
MEDC	Negatif	Trading	Negatif	Sell	940	925	915	950	965	900
PGAS	Negatif	Trading	Positif	Hold	1,420	1,410	1,395	1,435	1,445	1,370
PTBA	Negatif	Oversold	Negatif	Specu. Buy	3,470	3,425	3,380	3,515	3,560	3,325
SCMA	Negatif	Trading	Positif	Hold	168	164	160	172	176	158
SIDO	Positif	Oversold	Negatif	Spec. Buy	770	765	750	785	790	740
SMGR	Negatif	Trading	Positif	Hold	5,975	5,850	5,700	6,125	6,250	5,600
SRTG	Negatif	Trading	Positif	Hold	1,770	1,735	1,700	1,805	1,840	1,670
TBIG	Negatif	Trading	Negatif	Sell	2,065	2,050	2,025	2,090	2,105	1,995
TINS	Positif	Trading	Positif	Spec. Buy	985	970	960	995	1,010	945
TLKM	Positif	Trading	Negatif	Hold	4,095	4,065	4,035	4,125	4,155	3,970
TOWR	Positif	Trading	Positif	Spec. Buy	1,020	1,005	995	1,030	1,045	980
TPIA	Positif	Trading	Negatif	Hold	2,260	2,240	2,220	2,280	2,300	2,185
UNTR	Negatif	Oversold	Negatif	Specu. Buy	24,975	24,750	24,475	25,250	25,475	24,100
UNVR	Negatif	OverBought	Positif	Sell	4,450	4,400	4,320	4,530	4,580	4,255

OUR TEAM

Sukarno Alatas

Head of Equity Research

sukarno@kiwoom.co.id | 021 5010 5800

Michelle Abadi

Associate

michelle@kiwoom.co.id | 021 5010 5800

Abdul Azis Setyo Wibowo

Equity Research Analyst

azis@kiwoom.co.id | 021 5010 5800

Rizky Khaerunnisa

Equity Research Analyst

rizky@kiwoom.co.id | 021 5010 5800



OTHER DISCLOSURES

All Kiwoom's research reports made available to clients are simultaneously available on our own website <http://www.kiwoom.co.id/>. Not all research content is redistributed, e-mailed or made available to third-party aggregators. For all research reports available on a particular stock, please contact your sales representative. Any data discrepancies in this report could be the result of different calculations and/or adjustments.

DISCLAIMER This report has been prepared and issued by PT Kiwoom Sekuritas Indonesia. Information has been obtained from sources believed to be reliable but Kiwoom Securities do not warrant its completeness or accuracy. Forward-looking information or statements in this report contain information that is based on forecast of future results, estimates of amounts not yet determinable, assumptions, and therefore involve known and unknown risks and uncertainties which may cause the actual results, performance or achievements of their subject matter to be materially different from current expectations.

To the fullest extent allowed by law, PT Kiwoom Sekuritas Indonesia shall not be liable for any direct, indirect or consequential losses, loss of profits, damages, costs or expenses incurred or suffered by any person or organization arising from reliance on or use of any information contained on this report. The information that we provide should not be construed in any manner whatsoever as, personalized advice.

No mention of a particular security in this report constitutes a recommendation to buy, sell or hold that or any security, or that any particular security, portfolio of securities, transaction or investment strategy is suitable for any specific person. This report is being supplied to you solely for your information and may not be reproduced by, further distributed to or published in whole or in part by, any other person.