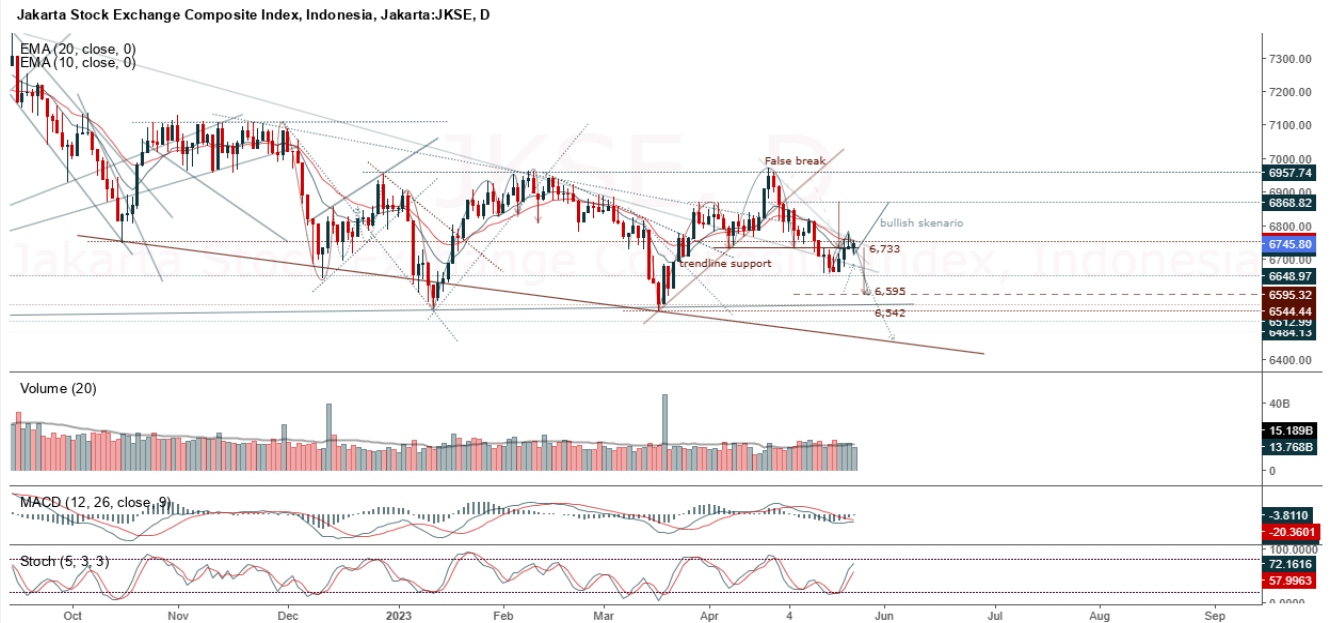


## JCI Range Today 6,706 – 6,713 (Support), 6,780 – 6,798 (Resistance)



JCI managed to close higher with a bullish candle. Stochastic indicator is bullish, MACD histogram is moving in the positive direction (bearish line) and volume is decreasing. If it moves bearish again, JCI is expected to weaken again to the support range of 6,706 – 6,713. If JCI is able to move bullish, there is a chance for JCI to go to the resistance at the range of 6,780 – 6,798.

**ASII**

Astra International Tbk, Indonesia, Jakarta:ASII, D

EMA (13, close, 0)  
EMA (34, close, 0)



**(ASII)** The price closed higher with a bullish candle. The price has the opportunity to strengthen to the nearest resistance. Stochastic golden cross indicator, MACD histogram is moving positive (sloping line) and volume is increasing. Confirmation to buy if the next candle is bullish again or buy on support if it goes down first. We suggest being careful if it fails to stay above the support level. **(Trading Buy)**

**TRADING STRATEGY:**

1. Target Price: The price has a bullish opportunity to test the resistance level 6,775. If it breaks level 6,775 then the price will go to level 6,875. We recommend to be careful if the price fails to break through or turn around the support area.

2. Stop Loss: To minimize the risk of loss, we recommend placing a stop loss at level 6,475.

Entry Buy : 6,550 – 6,675  
Target Price : 6,775 – 6,875  
Support : 6,500 – 6,550  
Cutloss : 6,475

**JPFA**

Japfa Comfeed Indonesia Tbk, Indonesia, Jakarta:JPFA, D

EMA (13, close, 0)  
EMA (34, close, 0)



**(JPFA)** The price closed higher or rallied again. The price has the opportunity to strengthen again to the next resistance. Stochastic indicator is bullish, MACD histogram is moving positive (bullish line) and volume is decreasing. Confirmation to buy if the next candle is bullish again or buy on support if it goes down first. We suggest being careful if it fails to stay above the support level. **(Trading Buy)**

**TRADING STRATEGY:**

1.Target Price: The price has a bullish opportunity to test the resistance level 1,240. If it breaks level 1,240 then the price will go to level 1,260. We recommend to be careful if the price fails to break through or turn around the support area.

2. Stop Loss: To minimize the risk of loss, we recommend placing a stop loss at level 1,175.

Entry Buy : 1,190 – 1,210  
Target Price : 1,240 – 1,260  
Support : 1,180 – 1,190  
Cutloss : 1,175

## MEDC

Medco Energi Internasional Tbk, Indonesia, Jakarta: MEDC, D

EMA (13, close, 0)  
EMA (34, close, 0)



**(MEDC)** The price closed higher with a bullish candle (false breakdown). The price has the opportunity to strengthen again to the nearest resistance. Stochastic golden cross indicator, MACD histogram is moving in the positive direction (bearish line) and volume has increased significantly. Confirmation to buy if the next candle is bullish again or buy on support if it goes down first. We suggest being careful if it fails to stay above the support level. **(Trading Buy)**

### TRADING STRATEGY:

1. Target Price: The price has a bullish opportunity to test the resistance level 915. If it breaks level 915 then the price will go to level 930. We recommend to be careful if the price fails to break through or turn around the support area.

2. Stop Loss: To minimize the risk of loss, we recommend placing a stop loss at level 850.

Entry Buy : 870 – 890  
Target Price : 915 – 930  
Support : 855 – 870  
Cutloss : 850

**SIDO**

Industri Jamu dan Farmasi Sido Muncul Tbk PT, Indonesia, Jakarta:SIDO, D

EMA (13, close, 0)  
EMA (34, close, 0)



**(SIDO)** The price closed higher with a bullish candle. The price has the opportunity to strengthen again to the nearest resistance. Stochastic indicator is bullish, MACD histogram is moving positive (bullish line) and volume is decreasing. Confirmation to buy if the next candle is bullish again or buy on support if it goes down first. We suggest being careful if it fails to stay above the support level. **(Trading Buy)**

**TRADING STRATEGY:**

- 1.Target Price: The price has a bullish opportunity to test the resistance level 795. If it breaks level 795 then the price will go to level 805. We recommend to be careful if the price fails to break through or turn around the support area.
2. Stop Loss: To minimize the risk of loss, we recommend placing a stop loss at level 755.

Entry Buy : 770 – 780  
Target Price : 795 – 805  
Support : 760 – 770  
Cutloss : 755

**Forecast – Technical Analysis**

| Ticker | MA5     | RSI Rec    | MACD Trend | Recomm.    | Pivot Point | Support |        | Resistance |        | Stop Loss Level |
|--------|---------|------------|------------|------------|-------------|---------|--------|------------|--------|-----------------|
|        |         |            |            |            |             | 1       | 2      | 1          | 2      |                 |
| JCI    | Negatif | Trading    | Negatif    | Sell       | 6,750       | 6,725   | 6,700  | 6,750      | 6,775  | 6,600           |
| ACES   | Negatif | OverBought | Positif    | Sell       | 610         | 600     | 585    | 625        | 635    | 575             |
| ADRO   | Positif | Oversold   | Negatif    | Spec. Buy  | 2,250       | 2,190   | 2,160  | 2,280      | 2,340  | 2,130           |
| AKRA   | Negatif | Oversold   | Negatif    | Specu. Buy | 1,365       | 1,355   | 1,345  | 1,375      | 1,385  | 1,320           |
| AMRT   | Positif | Trading    | Negatif    | Hold       | 2,830       | 2,790   | 2,740  | 2,880      | 2,920  | 2,700           |
| ANTM   | Positif | Oversold   | Negatif    | Spec. Buy  | 1,950       | 1,945   | 1,935  | 1,960      | 1,965  | 1,905           |
| ARTO   | Negatif | OverBought | Positif    | Sell       | 2,575       | 2,530   | 2,465  | 2,640      | 2,685  | 2,430           |
| ASII   | Negatif | OverBought | Positif    | Sell       | 6,600       | 6,550   | 6,425  | 6,725      | 6,775  | 6,325           |
| BBCA   | Negatif | OverBought | Positif    | Sell       | 9,125       | 9,025   | 8,950  | 9,200      | 9,300  | 8,800           |
| BBNI   | Negatif | Trading    | Negatif    | Sell       | 8,875       | 8,800   | 8,725  | 8,950      | 9,025  | 8,600           |
| BBRI   | Negatif | OverBought | Positif    | Sell       | 5,550       | 5,500   | 5,400  | 5,650      | 5,700  | 5,325           |
| BBTN   | Negatif | Trading    | Positif    | Hold       | 1,275       | 1,265   | 1,250  | 1,290      | 1,300  | 1,230           |
| BMRI   | Negatif | Trading    | Positif    | Hold       | 5,100       | 5,050   | 5,000  | 5,150      | 5,200  | 4,925           |
| BRIS   | Negatif | Trading    | Negatif    | Sell       | 1,680       | 1,655   | 1,640  | 1,695      | 1,720  | 1,615           |
| BRPT   | Negatif | Trading    | Negatif    | Sell       | 790         | 780     | 770    | 800        | 810    | 755             |
| BUKA   | Positif | Oversold   | Negatif    | Spec. Buy  | 199         | 196     | 194    | 201        | 204    | 191             |
| CPIN   | Negatif | Trading    | Positif    | Hold       | 5,050       | 4,935   | 4,855  | 5,125      | 5,225  | 4,780           |
| EMTK   | Negatif | Oversold   | Positif    | Spec. Buy  | 655         | 625     | 605    | 675        | 705    | 595             |
| ESSA   | Positif | Oversold   | Positif    | Buy        | 535         | 520     | 505    | 550        | 565    | 496             |
| EXCL   | Negatif | Trading    | Positif    | Hold       | 1,955       | 1,920   | 1,900  | 1,975      | 2,010  | 1,870           |
| GOTO   | Positif | Trading    | Positif    | Spec. Buy  | 114         | 113     | 112    | 115        | 116    | 110             |
| HRUM   | Negatif | Oversold   | Negatif    | Specu. Buy | 1,295       | 1,285   | 1,275  | 1,305      | 1,315  | 1,255           |
| ICBP   | Negatif | OverBought | Positif    | Sell       | 11,200      | 11,150  | 11,100 | 11,250     | 11,300 | 10,925          |
| INCO   | Positif | Trading    | Negatif    | Hold       | 6,525       | 6,425   | 6,300  | 6,650      | 6,750  | 6,200           |
| INDF   | Negatif | OverBought | Positif    | Sell       | 6,950       | 6,900   | 6,850  | 7,000      | 7,050  | 6,725           |
| INDY   | Positif | Oversold   | Negatif    | Spec. Buy  | 1,905       | 1,880   | 1,850  | 1,935      | 1,960  | 1,820           |
| INKP   | Negatif | Trading    | Positif    | Hold       | 7,500       | 7,400   | 7,325  | 7,575      | 7,675  | 7,225           |
| INTP   | Positif | Trading    | Positif    | Spec. Buy  | 10,000      | 9,925   | 9,825  | 10,100     | 10,175 | 9,675           |
| ITMG   | Positif | Oversold   | Negatif    | Spec. Buy  | 25,100      | 24,825  | 24,475 | 25,450     | 25,725 | 24,125          |
| JPFA   | Negatif | OverBought | Positif    | Sell       | 1,200       | 1,185   | 1,165  | 1,220      | 1,235  | 1,145           |
| KLBF   | Positif | Trading    | Positif    | Spec. Buy  | 2,075       | 2,025   | 1,995  | 2,105      | 2,155  | 1,965           |
| MDKA   | Positif | Oversold   | Negatif    | Spec. Buy  | 2,970       | 2,895   | 2,830  | 3,035      | 3,110  | 2,785           |
| MEDC   | Positif | Oversold   | Negatif    | Spec. Buy  | 870         | 845     | 815    | 900        | 925    | 800             |
| PGAS   | Positif | Trading    | Negatif    | Hold       | 1,370       | 1,355   | 1,350  | 1,375      | 1,390  | 1,325           |
| PTBA   | Positif | Oversold   | Negatif    | Spec. Buy  | 3,140       | 3,090   | 3,060  | 3,170      | 3,220  | 3,015           |
| SCMA   | Positif | Oversold   | Negatif    | Spec. Buy  | 147         | 145     | 141    | 151        | 153    | 139             |
| SIDO   | Positif | Oversold   | Negatif    | Spec. Buy  | 775         | 775     | 765    | 785        | 785    | 755             |
| SMGR   | Negatif | Trading    | Positif    | Hold       | 5,950       | 5,900   | 5,875  | 5,975      | 6,025  | 5,775           |
| SRTG   | Positif | Oversold   | Positif    | Buy        | 1,710       | 1,685   | 1,665  | 1,730      | 1,755  | 1,640           |
| TBIG   | Positif | Oversold   | Negatif    | Spec. Buy  | 1,980       | 1,930   | 1,895  | 2,015      | 2,065  | 1,865           |
| TINS   | Positif | Oversold   | Negatif    | Spec. Buy  | 935         | 930     | 920    | 945        | 950    | 905             |
| TLKM   | Negatif | Trading    | Negatif    | Sell       | 4,100       | 4,000   | 3,920  | 4,180      | 4,280  | 3,860           |
| TOWR   | Negatif | Trading    | Positif    | Hold       | 1,015       | 995     | 985    | 1,025      | 1,045  | 970             |
| TPIA   | Positif | Oversold   | Negatif    | Spec. Buy  | 2,115       | 2,065   | 2,015  | 2,165      | 2,215  | 1,980           |
| UNTR   | Positif | Oversold   | Negatif    | Spec. Buy  | 24,525      | 24,375  | 24,150 | 24,750     | 24,900 | 23,775          |
| UNVR   | Positif | Trading    | Negatif    | Hold       | 4,425       | 4,400   | 4,365  | 4,460      | 4,485  | 4,300           |

## OUR TEAM

**Sukarno Alatas**

Head of Equity Research

[sukarno@kiwoom.co.id](mailto:sukarno@kiwoom.co.id) | 021 5010 5800**Michelle Abadi**

Associate

[michelle@kiwoom.co.id](mailto:michelle@kiwoom.co.id) | 021 5010 5800**Abdul Azis Setyo Wibowo**

Equity Research Analyst

[azis@kiwoom.co.id](mailto:azis@kiwoom.co.id) | 021 5010 5800**OTHER DISCLOSURES**

All Kiwoom's research reports made available to clients are simultaneously available on our own website <http://www.kiwoom.co.id/>. Not all research content is redistributed, e-mailed or made available to third-party aggregators. For all research reports available on a particular stock, please contact your sales representative. Any data discrepancies in this report could be the result of different calculations and/or adjustments.

**DISCLAIMER** This report has been prepared and issued by PT Kiwoom Sekuritas Indonesia. Information has been obtained from sources believed to be reliable but Kiwoom Securities do not warrant its completeness or accuracy. Forward-looking information or statements in this report contain information that is based on forecast of future results, estimates of amounts not yet determinable, assumptions, and therefore involve known and unknown risks and uncertainties which may cause the actual results, performance or achievements of their subject matter to be materially different from current expectations.

To the fullest extent allowed by law, PT Kiwoom Sekuritas Indonesia shall not be liable for any direct, indirect or consequential losses, loss of profits, damages, costs or expenses incurred or suffered by any person or organization arising from reliance on or use of any information contained on this report. The information that we provide should not be construed in any manner whatsoever as, personalized advice.

No mention of a particular security in this report constitutes a recommendation to buy, sell or hold that or any security, or that any particular security, portfolio of securities, transaction or investment strategy is suitable for any specific person. This report is being supplied to you solely for your information and may not be reproduced by, further distributed to or published in whole or in part by, any other person.