

JCI Range Today 6,656 – 6,662 (Support), 6,729 – 6,745 (Resistance)



JCI managed to close down with a bearish candle. Stochastic indicator is neutral, MACD histogram is negative (bearish line) and volume is slightly decreasing. If it moves bearish again, JCI is expected to weaken again to the support range of 6,656 – 6,662. If JCI is able to move bullish, there is a chance for JCI to go to the resistance at the range of 6,729 – 6,745.

ACES

Ace Hardware Indonesia Tbk, Indonesia, Jakarta:ACES, D

EMA (13, close, 0)
EMA (34, close, 0)



(ACES) The price closed higher with a bullish candle. The price has the opportunity to strengthen to the nearest resistance. The stochastic indicator is back to the golden cross, MACD histogram is moving positive (bullish line) and volume is neutral. Confirmation to buy if the next candle is bullish again or buy on support if it goes down first. We suggest being careful if it fails to stay above the support level. **(Trading Buy)**

TRADING STRATEGY:

1. Target Price: The price has a bullish opportunity to test the resistance level 650. If it breaks level 650 then the price will go to level 660. We recommend to be careful if the price fails to break through or turn around the support area.

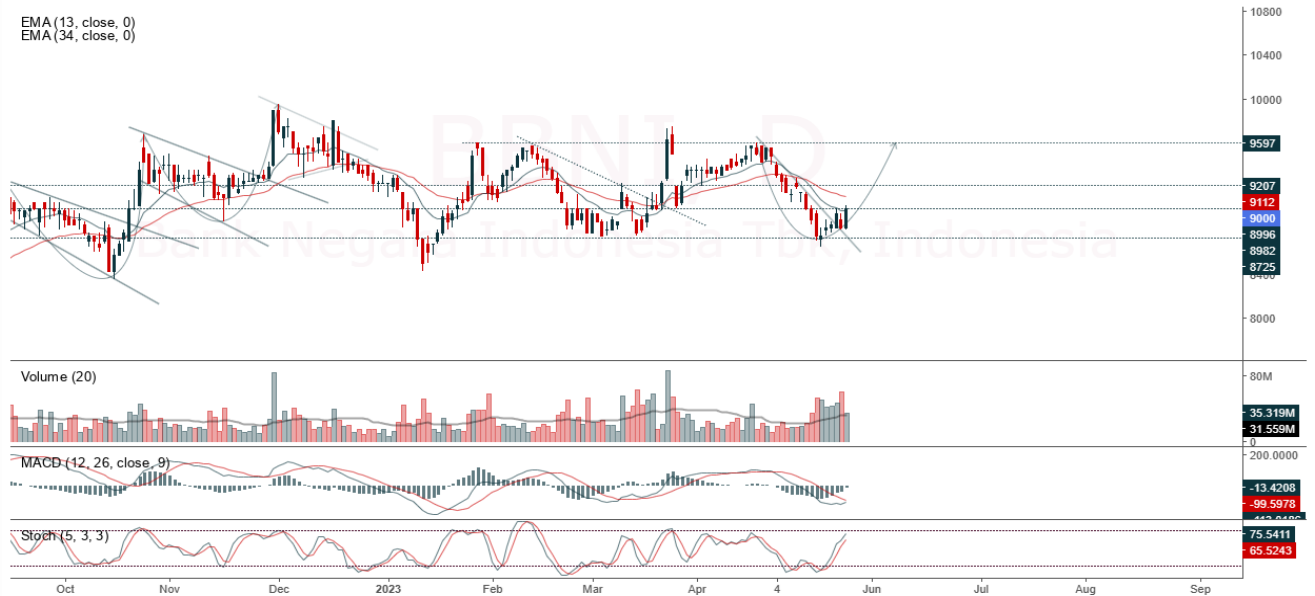
2. Stop Loss: To minimize the risk of loss, we recommend placing a stop loss at level 610.

Entry Buy : 625 – 635
Target Price : 650 – 660
Support : 615 – 625
Cutloss : 610

BBNI

Bank Negara Indonesia Tbk, Indonesia, Jakarta:BBNI, D

EMA (13, close, 0)
EMA (34, close, 0)



(BBNI) The price closed higher or rallied again. The price has the opportunity to strengthen again to the nearest resistance. Stochastic indicator is bullish, MACD histogram is moving in the positive direction (opportunity for golden cross line) and volume is decreasing. Confirmation to buy if the next candle is bullish again or buy on support if it goes down first. We suggest being careful if it fails to stay above the support level. **(Trading Buy)**

TRADING STRATEGY:

1. Target Price: The price has a bullish opportunity to test the resistance level 9,150. If it breaks level 9,150 then the price will go to level 9,275. We recommend to be careful if the price fails to break through or turn around the support area.

2. Stop Loss: To minimize the risk of loss, we recommend placing a stop loss at level 8,800.

Entry Buy	: 8,900 – 9,000
Target Price	: 9,150 – 9,275
Support	: 8,825 – 8,900
Cutloss	: 8,800

BEST

Bekasi Fajar Industrial Estate, Indonesia, Jakarta: BEST, D

EMA (13, close, 0)
EMA (34, close, 0)



(BEST) The price closed higher with a bullish candle. The price has the opportunity to strengthen again to the nearest resistance. Stochastic indicator is bullish, MACD histogram is moving positive (bullish line) and volume has increased significantly. Confirmation to buy if the next candle is bullish again or buy on support if it goes down first. We suggest being careful if it fails to stay above the support level. **(Trading Buy)**

TRADING STRATEGY:

1. Target Price: The price has a bullish opportunity to test the resistance level 171. If it breaks level 171 then the price will go to level 174. We recommend to be careful if the price fails to break through or turn around the support area.

2. Stop Loss: To minimize the risk of loss, we recommend placing a stop loss at level 158.

Entry Buy : 161 – 165
Target Price : 171 – 174
Support : 159 – 161
Cutloss : 158

BIRD

Blue Bird Tbk, Indonesia, Jakarta:BIRD, D

EMA (13, close, 0)
EMA (34, close, 0)



(BIRD) The price closed higher with a bullish candle. The price has the opportunity to strengthen again to the nearest resistance. Stochastic indicator is bullish, MACD histogram is moving in the positive direction (bullish line) and volume is increasing. Confirmation to buy if the next candle is bullish again or buy on support if it goes down first. We suggest being careful if it fails to stay above the support level. **(Trading Buy)**

TRADING STRATEGY:

1.Target Price: The price has a bullish opportunity to test the resistance level 1,865. If it breaks level 1,865 then the price will go to level 1,880. We recommend to be careful if the price fails to break through or turn around the support area.

2. Stop Loss: To minimize the risk of loss, we recommend placing a stop loss at level 1,755.

Entry Buy : 1,785 – 1,820
Target Price : 1,865 – 1,880
Support : 1,760 – 1,785
Cutloss : 1,755

Forecast – Technical Analysis

Ticker	MA5	RSI Rec	MACD Trend	Recomm.	Pivot Point	Support		Resistance		Stop Loss Level
						1	2	1	2	
JCI	Negatif	Trading	Negatif	Sell	6,725	6,700	6,675	6,750	6,775	6,575
ACES	Negatif	OverBought	Positif	Sell	625	620	605	640	645	595
ADRO	Positif	Oversold	Negatif	Spec. Buy	2,160	2,120	2,080	2,200	2,240	2,050
AKRA	Negatif	Oversold	Negatif	Specu. Buy	1,370	1,355	1,345	1,380	1,395	1,325
AMRT	Positif	Trading	Negatif	Hold	2,765	2,720	2,675	2,810	2,855	2,635
ANTM	Negatif	Oversold	Negatif	Specu. Buy	1,950	1,935	1,925	1,960	1,975	1,895
ARTO	Negatif	OverBought	Positif	Sell	2,535	2,475	2,425	2,585	2,645	2,385
ASII	Negatif	OverBought	Positif	Sell	6,625	6,575	6,450	6,750	6,800	6,350
BBCA	Negatif	Trading	Positif	Hold	9,100	9,025	9,000	9,125	9,200	8,850
BBNI	Negatif	Oversold	Negatif	Specu. Buy	8,925	8,800	8,700	9,025	9,150	8,550
BBRI	Negatif	OverBought	Positif	Sell	5,500	5,425	5,375	5,550	5,625	5,300
BBTN	Negatif	Trading	Positif	Hold	1,275	1,250	1,235	1,290	1,315	1,215
BMRI	Negatif	Trading	Positif	Hold	5,125	5,050	4,990	5,175	5,250	4,915
BRIS	Negatif	Trading	Negatif	Sell	1,695	1,675	1,660	1,710	1,730	1,635
BRPT	Positif	Trading	Negatif	Hold	795	780	775	800	815	760
BUKA	Negatif	Oversold	Negatif	Specu. Buy	198	196	194	200	202	191
CPIN	Negatif	OverBought	Positif	Sell	5,125	5,000	4,915	5,200	5,325	4,840
EMTK	Negatif	Oversold	Negatif	Specu. Buy	635	610	595	650	675	585
ESSA	Positif	Oversold	Positif	Buy	525	510	494	540	555	486
EXCL	Negatif	Trading	Positif	Hold	1,965	1,945	1,935	1,975	1,995	1,905
GOTO	Negatif	Trading	Positif	Hold	112	111	109	114	115	108
HRUM	Negatif	Oversold	Negatif	Specu. Buy	1,275	1,265	1,240	1,300	1,310	1,220
ICBP	Negatif	OverBought	Positif	Sell	11,225	11,150	11,125	11,250	11,325	10,950
INCO	Positif	Trading	Negatif	Hold	6,575	6,525	6,425	6,675	6,725	6,325
INDF	Negatif	OverBought	Positif	Sell	7,050	6,925	6,825	7,150	7,275	6,725
INDY	Positif	Oversold	Negatif	Spec. Buy	1,860	1,850	1,830	1,880	1,890	1,805
INKP	Negatif	Trading	Positif	Hold	7,350	7,250	7,150	7,450	7,550	7,025
INTP	Positif	Trading	Negatif	Hold	10,075	9,975	9,875	10,175	10,275	9,725
ITMG	Positif	Oversold	Negatif	Spec. Buy	23,950	23,700	23,350	24,300	24,550	23,000
JPFA	Negatif	OverBought	Positif	Sell	1,225	1,205	1,180	1,250	1,270	1,160
KLBF	Positif	Trading	Negatif	Hold	2,055	2,025	2,015	2,065	2,095	1,980
MDKA	Positif	Oversold	Negatif	Spec. Buy	2,980	2,935	2,900	3,015	3,060	2,855
MEDC	Positif	Trading	Negatif	Hold	910	890	855	945	965	845
PGAS	Positif	Trading	Negatif	Hold	1,365	1,350	1,340	1,375	1,390	1,320
PTBA	Positif	Oversold	Negatif	Spec. Buy	3,040	2,990	2,960	3,070	3,120	2,915
SCMA	Negatif	Oversold	Negatif	Specu. Buy	145	142	138	149	152	136
SIDO	Negatif	Trading	Positif	Hold	775	775	765	785	785	755
SMGR	Negatif	Trading	Positif	Hold	5,925	5,875	5,850	5,950	6,000	5,750
SRTG	Positif	Oversold	Positif	Buy	1,635	1,595	1,545	1,685	1,725	1,525
TBIG	Positif	Trading	Negatif	Hold	2,015	1,970	1,910	2,075	2,120	1,880
TINS	Positif	Oversold	Negatif	Spec. Buy	905	880	850	935	960	835
TLKM	Negatif	Trading	Negatif	Sell	4,165	4,105	4,065	4,205	4,265	4,000
TOWR	Negatif	Trading	Negatif	Sell	1,010	1,000	980	1,030	1,040	965
TPIA	Positif	Oversold	Negatif	Spec. Buy	2,125	2,100	2,065	2,160	2,185	2,035
UNTR	Positif	Oversold	Negatif	Spec. Buy	24,000	23,500	23,000	24,500	25,000	22,650
UNVR	Positif	Trading	Negatif	Hold	4,410	4,370	4,330	4,450	4,490	4,265

OUR TEAM

Sukarno Alatas

Head of Equity Research

sukarno@kiwoom.co.id | 021 5010 5800**Michelle Abadi**

Associate

michelle@kiwoom.co.id | 021 5010 5800**Abdul Azis Setyo Wibowo**

Equity Research Analyst

azis@kiwoom.co.id | 021 5010 5800**OTHER DISCLOSURES**

All Kiwoom's research reports made available to clients are simultaneously available on our own website <http://www.kiwoom.co.id/>. Not all research content is redistributed, e-mailed or made available to third-party aggregators. For all research reports available on a particular stock, please contact your sales representative. Any data discrepancies in this report could be the result of different calculations and/or adjustments.

DISCLAIMER This report has been prepared and issued by PT Kiwoom Sekuritas Indonesia. Information has been obtained from sources believed to be reliable but Kiwoom Securities do not warrant its completeness or accuracy. Forward-looking information or statements in this report contain information that is based on forecast of future results, estimates of amounts not yet determinable, assumptions, and therefore involve known and unknown risks and uncertainties which may cause the actual results, performance or achievements of their subject matter to be materially different from current expectations.

To the fullest extent allowed by law, PT Kiwoom Sekuritas Indonesia shall not be liable for any direct, indirect or consequential losses, loss of profits, damages, costs or expenses incurred or suffered by any person or organization arising from reliance on or use of any information contained on this report. The information that we provide should not be construed in any manner whatsoever as, personalized advice.

No mention of a particular security in this report constitutes a recommendation to buy, sell or hold that or any security, or that any particular security, portfolio of securities, transaction or investment strategy is suitable for any specific person. This report is being supplied to you solely for your information and may not be reproduced by, further distributed to or published in whole or in part by, any other person.