

JCI Range Today 6,557– 6,562 (Support), 6,657 – 6,669 (Resistance)

Jakarta Stock Exchange Composite Index, Indonesia, Jakarta:JKSE, D

EMA (20, close, 0)
EMA (10, close, 0)



JCI closed stagnant with a doji candle. Stochastic golden cross indicator, MACD histogram is negative (bearish line) and volume is decreasing. If it moves bearish again, JCI is expected to weaken again to the support range of 6,557 – 6,562. If JCI is able to move bullish, there is a chance for JCI to go to the resistance at the range of 6,657 – 6,669.

ANTM

Aneka Tambang Persero Tbk, Indonesia, Jakarta:ANTM, D



(ANTM) The price closed higher with a bullish candle. The price has the opportunity to strengthen to the nearest resistance. Stochastic golden cross indicator, MACD histogram is moving in the positive direction (sloping line) and volume is decreasing. Confirmation to buy if the next candle is bullish again or buy on support if it goes down first. We suggest being careful if it fails to stay above the support level. **(Trading Buy)**

TRADING STRATEGY:

1. Target Price: The price has a bullish opportunity to test the resistance level 2,020. If it breaks level 2,020 then the price will go to level 2,040. We recommend to be careful if the price fails to break through or turn around the support area.

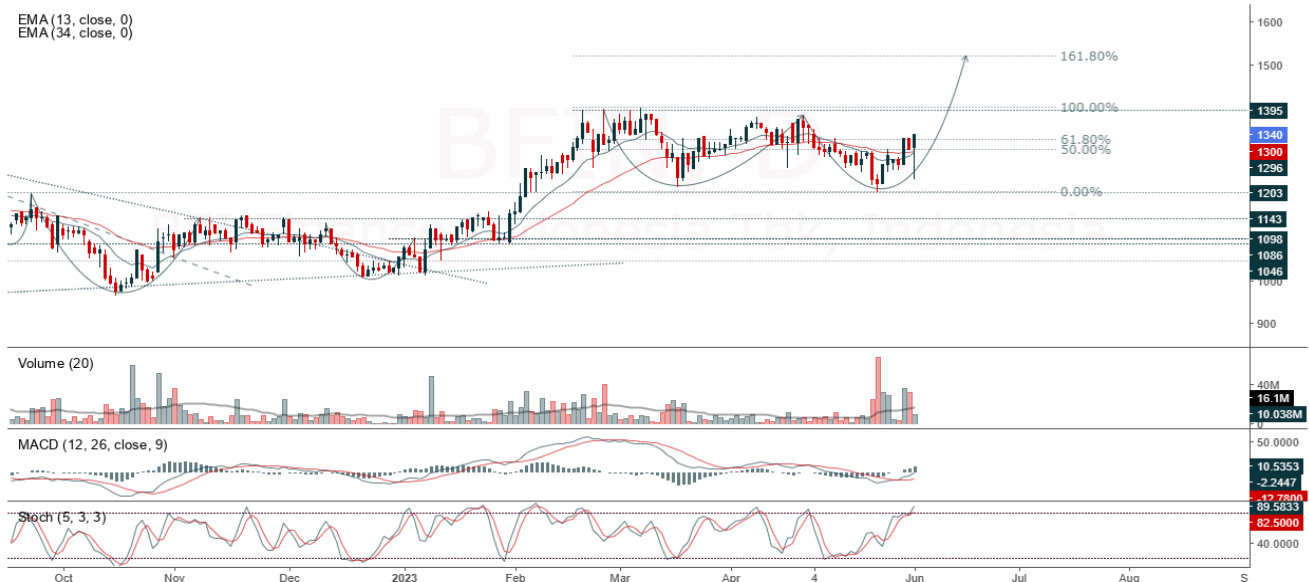
2. Stop Loss: To minimize the risk of loss, we recommend placing a stop loss at level 1,915.

Entry Buy : 1,945 – 1,975
 Target Price : 2,020 – 2,040
 Support : 1,920 – 1,945
 Cutloss : 1,915

BFIN

BFI Finance Indonesia Tbk, Indonesia, Jakarta: BFIN, D

EMA (13, close, 0)
EMA (34, close, 0)



(BFIN) The price closed higher after breakdown below support. The price has the opportunity to strengthen again to the nearest resistance. Stochastic indicator is bullish, MACD histogram is moving positive again (golden cross line) and volume is neutral. Confirmation to buy if the next candle is bullish again or buy on support if it goes down first. We suggest being careful if it fails to stay above the support level. **(Trading Buy)**

TRADING STRATEGY:

1. Target Price: The price has a bullish opportunity to test the resistance level 1,370. If it breaks level 1,370 then the price will go to level 1,380. We recommend to be careful if the price fails to break through or turn around the support area.

2. Stop Loss: To minimize the risk of loss, we recommend placing a stop loss at level 1,300.

Entry Buy : 1,315 – 1,340
Target Price : 1,370 – 1,380
Support : 1,305 – 1,315
Cutloss : 1,300

GGRM

Gudang Garam Tbk, Indonesia, Jakarta:GGRM, D

EMA (13, close, 0)
EMA (34, close, 0)



(GGRM) The price closed higher and returned to the uptrend. The price has the opportunity to strengthen again to the nearest resistance. Stochastic indicator is bullish, MACD histogram is moving in the positive direction (sloping line) and volume is neutral. Confirmation to buy if the next candle is bullish again or buy on support if it goes down first. We suggest being careful if it fails to stay above the support level. **(Trading Buy)**

TRADING STRATEGY:

1. Target Price: The price has a bullish opportunity to test the resistance level 29,250. If it breaks level 29,250 then the price will go to level 29,800. We recommend to be careful if the price fails to break through or turn around the support area.

2. Stop Loss: To minimize the risk of loss, we recommend placing a stop loss at level 27,725.

Entry Buy : 27,900 – 28,575
Target Price : 29,250 – 29,800
Support : 27,750 – 27,900
Cutloss : 27,725

PWON

Pakuwon Jati Tbk, Indonesia, Jakarta:PWON, D

EMA (13, close, 0)
EMA (34, close, 0)



(PWON) The price closed higher after breakdown below support (false break). The price has the opportunity to strengthen again to the nearest resistance. Stochastic golden cross indicator, MACD histogram is moving in the positive direction (opportunity for golden cross line) and the volume trend is increasing. Confirmation to buy if the next candle is bullish again or buy on support if it goes down first. We suggest being careful if it fails to stay above the support level. **(Trading Buy)**

TRADING STRATEGY:

1.Target Price: The price has a bullish opportunity to test the resistance level 490. If it breaks level 490 then the price will go to level 494. We recommend to be careful if the price fails to break through or turn around the support area.

2. Stop Loss: To minimize the risk of loss, we recommend placing a stop loss at level 466.

Entry Buy : 474 – 480
Target Price : 490 – 494
Support : 468 – 474
Cutloss : 466

Forecast – Technical Analysis

Ticker	MA5	RSI Rec	MACD Trend	Recomm.	Pivot Point	Support		Resistance		Stop Loss Level
						1	2	1	2	
JCI	Positif	Oversold	Negatif	Spec. Buy	6,625	6,600	6,575	6,650	6,675	6,475
ACES	Positif	OverBought	Positif	Hold	625	620	600	645	650	590
ADRO	Positif	Oversold	Negatif	Spec. Buy	2,110	2,050	2,020	2,140	2,200	1,990
AKRA	Negatif	Oversold	Positif	Spec. Buy	1,370	1,350	1,325	1,395	1,415	1,305
AMRT	Positif	Oversold	Negatif	Spec. Buy	2,725	2,635	2,595	2,765	2,855	2,555
ANTM	Positif	Oversold	Negatif	Spec. Buy	1,945	1,895	1,855	1,985	2,035	1,825
ARTO	Positif	Trading	Negatif	Hold	2,470	2,360	2,290	2,540	2,650	2,255
ASII	Positif	Trading	Negatif	Hold	6,725	6,425	6,225	6,925	7,225	6,125
BBCA	Negatif	Trading	Positif	Hold	9,200	9,075	8,975	9,300	9,425	8,825
BBNI	Negatif	Trading	Positif	Hold	9,050	8,975	8,925	9,100	9,175	8,775
BBRI	Negatif	OverBought	Positif	Sell	5,525	5,425	5,350	5,600	5,700	5,250
BBTN	Positif	Trading	Negatif	Hold	1,270	1,260	1,235	1,295	1,305	1,215
BMRI	Positif	Trading	Positif	Spec. Buy	5,100	5,050	5,025	5,125	5,175	4,950
BRIS	Negatif	Trading	Positif	Hold	1,740	1,715	1,705	1,750	1,775	1,680
BRPT	Positif	Oversold	Negatif	Spec. Buy	745	730	710	765	780	700
BUKA	Negatif	Trading	Positif	Hold	210	201	196	215	224	193
CPIN	Positif	Trading	Positif	Spec. Buy	4,955	4,840	4,760	5,025	5,150	4,690
EMTK	Positif	Oversold	Negatif	Spec. Buy	605	595	580	620	630	570
ESSA	Positif	Oversold	Positif	Buy	505	484	457	535	555	450
EXCL	Negatif	Trading	Positif	Hold	1,985	1,970	1,950	2,005	2,020	1,920
GOTO	Negatif	OverBought	Positif	Sell	125	125	125	125	125	123
HRUM	Negatif	Trading	Positif	Hold	1,420	1,400	1,355	1,465	1,485	1,335
ICBP	Negatif	Strong Sell	Positif	Sell	11,500	11,450	11,250	11,700	11,750	11,075
INCO	Positif	Oversold	Negatif	Spec. Buy	6,450	6,275	6,075	6,650	6,825	6,000
INDF	Negatif	OverBought	Positif	Sell	7,225	7,175	7,100	7,300	7,350	6,975
INDY	Positif	Oversold	Negatif	Spec. Buy	1,765	1,725	1,700	1,790	1,830	1,670
INKP	Positif	Oversold	Negatif	Spec. Buy	7,025	6,925	6,850	7,100	7,200	6,750
INTP	Positif	Trading	Negatif	Hold	9,925	9,850	9,775	10,000	10,075	9,625
ITMG	Positif	Strong Buy	Negatif	Buy	22,675	22,250	21,925	23,000	23,425	21,575
JPFA	Positif	Trading	Positif	Spec. Buy	1,195	1,175	1,155	1,215	1,235	1,135
KLBF	Negatif	Trading	Negatif	Sell	2,060	2,030	2,000	2,090	2,120	1,970
MDKA	Negatif	Oversold	Positif	Spec. Buy	3,010	2,885	2,750	3,145	3,270	2,705
MEDC	Positif	Trading	Positif	Spec. Buy	920	910	900	930	940	885
PGAS	Negatif	Trading	Positif	Hold	1,450	1,425	1,410	1,465	1,490	1,390
PTBA	Negatif	Oversold	Negatif	Specu. Buy	3,125	3,075	3,035	3,165	3,215	2,985
SCMA	Positif	Oversold	Negatif	Spec. Buy	139	136	133	142	145	131
SIDO	Positif	Oversold	Negatif	Spec. Buy	725	710	695	740	755	685
SMGR	Positif	Oversold	Positif	Buy	5,800	5,675	5,575	5,900	6,025	5,500
SRTG	Positif	Oversold	Negatif	Spec. Buy	1,560	1,535	1,525	1,570	1,595	1,500
TBIG	Negatif	Trading	Positif	Hold	2,135	2,065	1,995	2,205	2,275	1,965
TINS	Negatif	Trading	Negatif	Sell	930	915	890	955	970	880
TLKM	Positif	Trading	Positif	Spec. Buy	4,075	4,015	3,965	4,125	4,185	3,905
TOWR	Positif	Trading	Negatif	Hold	990	975	960	1,005	1,020	945
TPIA	Negatif	Trading	Negatif	Sell	2,090	2,040	1,990	2,140	2,190	1,960
UNTR	Positif	Oversold	Negatif	Spec. Buy	22,850	22,225	21,900	23,175	23,800	21,575
UNVR	Negatif	Trading	Positif	Hold	4,510	4,470	4,420	4,560	4,600	4,355

OUR TEAM

Sukarno Alatas

Head of Equity Research

sukarno@kiwoom.co.id | 021 5010 5800**Michelle Abadi**

Associate

michelle@kiwoom.co.id | 021 5010 5800**Abdul Azis Setyo Wibowo**

Equity Research Analyst

azis@kiwoom.co.id | 021 5010 5800**OTHER DISCLOSURES**

All Kiwoom's research reports made available to clients are simultaneously available on our own website <http://www.kiwoom.co.id/>. Not all research content is redistributed, e-mailed or made available to third-party aggregators. For all research reports available on a particular stock, please contact your sales representative. Any data discrepancies in this report could be the result of different calculations and/or adjustments.

DISCLAIMER This report has been prepared and issued by PT Kiwoom Sekuritas Indonesia. Information has been obtained from sources believed to be reliable but Kiwoom Securities do not warrant its completeness or accuracy. Forward-looking information or statements in this report contain information that is based on forecast of future results, estimates of amounts not yet determinable, assumptions, and therefore involve known and unknown risks and uncertainties which may cause the actual results, performance or achievements of their subject matter to be materially different from current expectations.

To the fullest extent allowed by law, PT Kiwoom Sekuritas Indonesia shall not be liable for any direct, indirect or consequential losses, loss of profits, damages, costs or expenses incurred or suffered by any person or organization arising from reliance on or use of any information contained on this report. The information that we provide should not be construed in any manner whatsoever as, personalized advice.

No mention of a particular security in this report constitutes a recommendation to buy, sell or hold that or any security, or that any particular security, portfolio of securities, transaction or investment strategy is suitable for any specific person. This report is being supplied to you solely for your information and may not be reproduced by, further distributed to or published in whole or in part by, any other person.