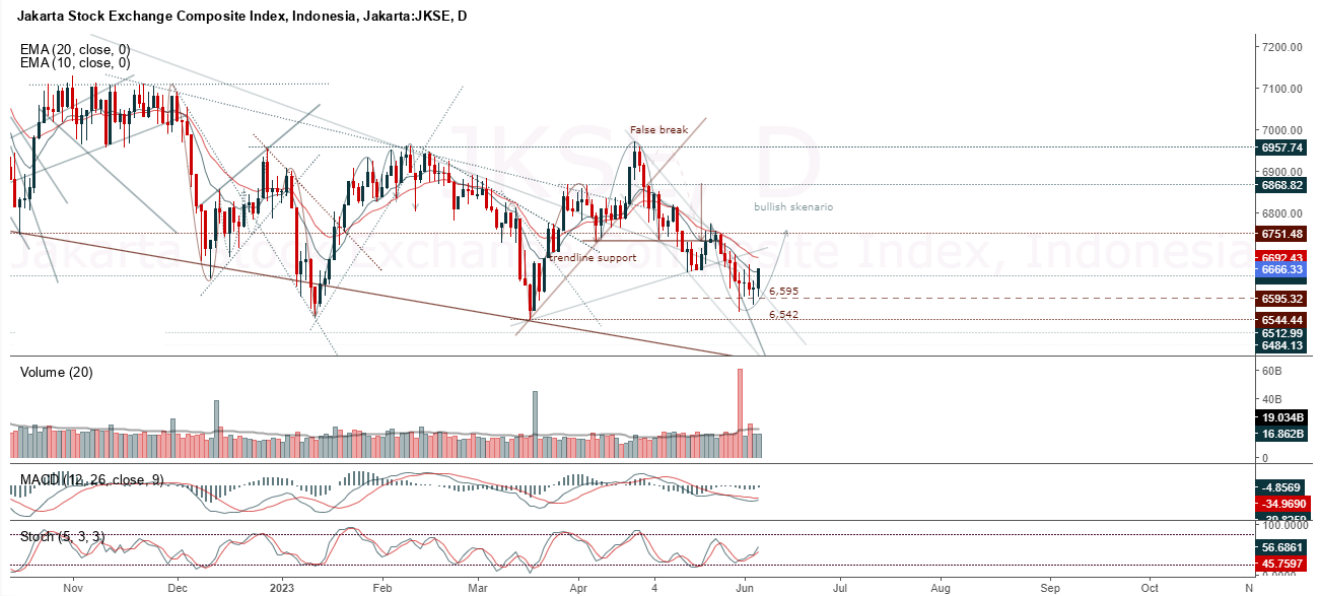


**JCI Range Today 6,598 – 6,617 (Support), 6,727 – 6,749 (Resistance)**



JCI closed higher on a bullish candle. Stochastic indicator is bullish, MACD histogram is moving in the positive direction (potential for golden cross line) and volume is increasing. If it moves bearish again, JCI is expected to weaken again to the support range of 6,598 – 6,617. If JCI is able to move bullish, there is a chance for JCI to go to the resistance at the range of 6,727 – 6,749.

**DRMA**

Dharma Polimetal Tbk PT, Indonesia, Jakarta:DRMA, D

EMA (13, close, 0)  
EMA (34, close, 0)



**(DRMA)** The price closed higher and are still in an uptrend. The price has the opportunity to strengthen to the next resistance. Stochastic indicator is bullish, MACD histogram is moving positive (bullish line) and volume is increasing. Confirmation to buy if the next candle is bullish again or buy on support if it goes down first. We suggest being careful if it fails to stay above the support level. **(Trading Buy)**

**TRADING STRATEGY:**

1. Target Price: The price has a bullish opportunity to test the resistance level 1,350. If it breaks level 1,350 then the price will go to level 1,370. We recommend to be careful if the price fails to break through or turn around the support area.

2. Stop Loss: To minimize the risk of loss, we recommend placing a stop loss at level 1,240.

Entry Buy : 1,270 – 1,290  
Target Price : 1,350 – 1370  
Support : 1,250 – 1,270  
Cutloss : 1,240

**ELSA**

Elnusa Tbk, Indonesia, Jakarta:ELSA, D

EMA(13, close, 0)



**(ELSA)** The price closed higher and rallied again. The price has the opportunity to strengthen again to the nearest resistance. Stochastic golden cross indicator, MACD histogram is moving positive again (bullish line) and volume is increasing. Confirmation to buy if the next candle is bullish again or buy on support if it goes down first. We suggest being careful if it fails to stay above the support level. **(Trading Buy)**

**TRADING STRATEGY:**

1. Target Price: The price has a bullish opportunity to test the resistance level 360. If it breaks level 360 then the price will go to level 364. We recommend to be careful if the price fails to break through or turn around the support area.

2. Stop Loss: To minimize the risk of loss, we recommend placing a stop loss at level 330am.

Entry Buy : 338 – 344  
 Target Price : 360 – 364  
 Support : 332 – 338  
 Cutloss : 330

**EXCL**

XL Axiata Tbk PT, Indonesia, Jakarta:EXCL, D



**(EXCL)** The price closed higher and continued the uptrend. The price has the opportunity to strengthen again to the nearest resistance. Stochastic indicator is bullish, MACD histogram is moving positive (bullish line) and volume has increased significantly. Confirmation to buy if the next candle is bullish again or buy on support if it goes down first. We suggest being careful if it fails to stay above the support level. **(Trading Buy)**

**TRADING STRATEGY:**

1. Target Price: The price has a bullish opportunity to test the resistance level 2,270. If it breaks level 2,070 then the price will go to level 2,120. We recommend to be careful if the price fails to break through or turn around the support area.

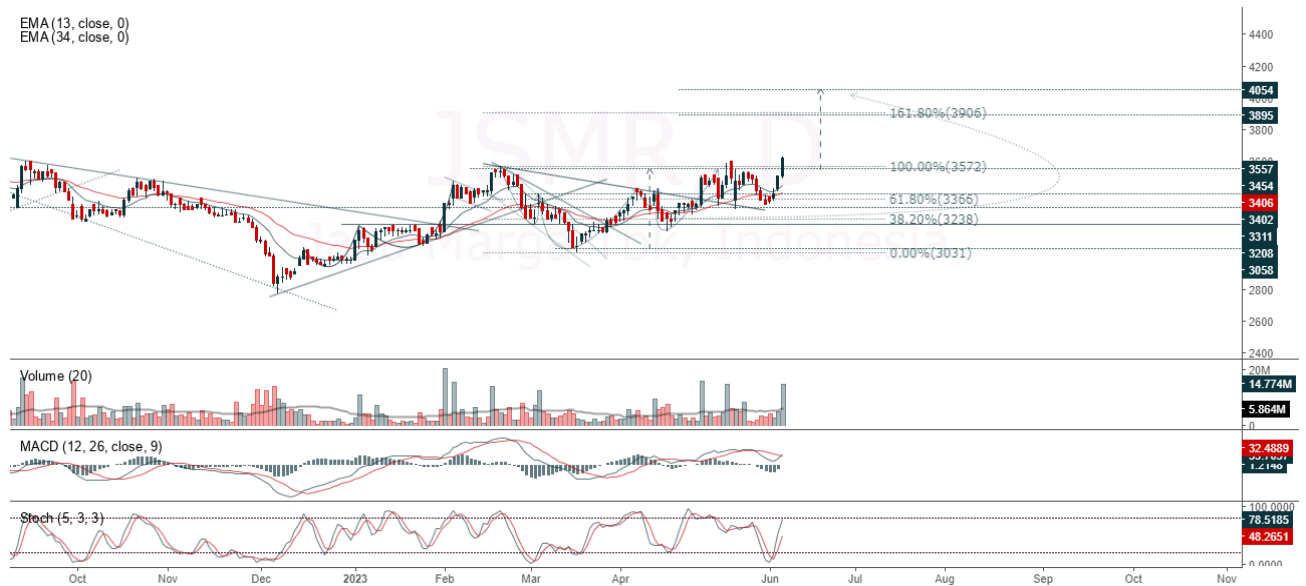
2. Stop Loss: To minimize the risk of loss, we recommend placing a stop loss at level 2,040.

Entry Buy : 2,070– 2,120  
 Target Price : 2,270 – 2,290  
 Support : 2,050– 2,070  
 Cutloss : 2,040

**JSMR**

Jasa Marga Tbk, Indonesia, Jakarta:JSMR, D

EMA (13, close, 0)  
EMA (34, close, 0)



**(JSMR)** The price closed higher and broke out the resistance. The price has the opportunity to strengthen again to the next resistance. Stochastic indicator is bullish, MACD histogram is moving in the positive direction (opportunity for golden cross line) and volume has increased significantly. Confirmation to buy if the next candle is bullish again or buy on support if it goes down first. We suggest being careful if it fails to stay above the support level. **(Trading Buy)**

**TRADING STRATEGY:**

1. Target Price: The price has a bullish opportunity to test the resistance level 3,540. If it breaks level 3,540 then the price will go to level 3,620. We recommend to be careful if the price fails to break through or turn around the support area.

2. Stop Loss: To minimize the risk of loss, we recommend placing a stop loss at level 3,490.

Entry Buy : 3,540– 3,620  
Target Price : 3,750– 3,790  
Support : 3,500– 3,540  
Cutloss : 3,490

**Forecast – Technical Analysis**

Ticker	MA5	RSI Rec	MACD Trend	Recomm.	Pivot Point	Support		Resistance		Stop Loss Level
						1	2	1	2	
JCI	Negatif	Trading	Negatif	Sell	6,625	6,600	6,575	6,675	6,700	6,475
ACES	Negatif	OverBought	Positif	Sell	690	670	645	715	735	635
ADRO	Negatif	Oversold	Negatif	Specu. Buy	2,190	2,170	2,140	2,220	2,240	2,110
AKRA	Positif	Trading	Positif	Spec. Buy	1,405	1,380	1,360	1,425	1,450	1,335
AMRT	Negatif	Trading	Negatif	Sell	2,705	2,655	2,615	2,745	2,795	2,575
ANTM	Negatif	Trading	Positif	Hold	2,015	1,985	1,960	2,040	2,070	1,930
ARTO	Negatif	OverBought	Positif	Sell	2,785	2,590	2,405	2,970	3,165	2,370
ASII	Negatif	OverBought	Positif	Sell	6,750	6,725	6,675	6,800	6,825	6,575
BBCA	Positif	Trading	Positif	Spec. Buy	9,100	9,075	9,050	9,125	9,150	8,925
BBNI	Negatif	Trading	Positif	Hold	9,150	9,125	9,025	9,250	9,275	8,900
BBRI	Positif	Trading	Negatif	Hold	5,425	5,375	5,300	5,500	5,550	5,225
BBTN	Negatif	Trading	Positif	Hold	1,310	1,300	1,285	1,325	1,335	1,265
BMRI	Positif	Trading	Negatif	Hold	5,025	4,975	4,950	5,050	5,100	4,875
BRIS	Positif	Trading	Negatif	Hold	1,690	1,670	1,665	1,695	1,715	1,640
BRPT	Positif	Oversold	Negatif	Spec. Buy	730	720	715	735	745	700
BUKA	Positif	Trading	Positif	Spec. Buy	214	207	202	219	226	198
CPIN	Positif	Trading	Negatif	Hold	4,995	4,935	4,875	5,050	5,125	4,800
EMTK	Negatif	Oversold	Positif	Spec. Buy	620	610	605	625	635	595
ESSA	Negatif	Trading	Positif	Hold	595	580	565	610	625	555
EXCL	Negatif	OverBought	Positif	Sell	2,090	2,045	2,010	2,125	2,170	1,975
GOTO	Negatif	Trading	Positif	Hold	120	114	108	126	132	106
HRUM	Negatif	Trading	Positif	Hold	1,445	1,395	1,350	1,490	1,540	1,330
ICBP	Negatif	OverBought	Negatif	Strong Sell	11,350	11,175	11,075	11,450	11,625	10,900
INCO	Positif	Trading	Negatif	Hold	6,575	6,475	6,350	6,700	6,800	6,250
INDF	Negatif	OverBought	Positif	Sell	7,450	7,400	7,325	7,525	7,575	7,225
INDY	Negatif	Trading	Positif	Hold	1,900	1,880	1,855	1,925	1,945	1,825
INKP	Positif	Trading	Negatif	Hold	7,225	7,075	6,925	7,375	7,525	6,800
INTP	Positif	Oversold	Negatif	Spec. Buy	9,650	9,550	9,475	9,725	9,825	9,325
ITMG	Negatif	Oversold	Positif	Spec. Buy	23,450	23,125	22,800	23,775	24,100	22,475
JPFA	Negatif	Trading	Negatif	Sell	1,215	1,195	1,185	1,225	1,245	1,165
KLBF	Positif	Trading	Negatif	Hold	2,050	2,025	2,010	2,065	2,090	1,975
MDKA	Negatif	Oversold	Positif	Spec. Buy	3,110	3,080	3,020	3,170	3,200	2,975
MEDC	Positif	Trading	Positif	Spec. Buy	910	905	890	925	930	880
PGAS	Positif	Trading	Positif	Spec. Buy	1,430	1,420	1,410	1,440	1,450	1,390
PTBA	Negatif	Trading	Positif	Hold	3,265	3,215	3,165	3,315	3,365	3,115
SCMA	Positif	Oversold	Positif	Buy	143	139	138	144	148	135
SIDO	Positif	Trading	Negatif	Hold	750	740	735	755	765	720
SMGR	Positif	Trading	Positif	Spec. Buy	5,850	5,825	5,750	5,925	5,950	5,675
SRTG	Positif	Oversold	Positif	Buy	1,575	1,555	1,545	1,585	1,605	1,520
TBIG	Negatif	Trading	Positif	Hold	2,220	2,140	2,080	2,280	2,360	2,050
TINS	Negatif	Trading	Positif	Hold	935	925	915	945	955	900
TLKM	Positif	Trading	Positif	Spec. Buy	4,160	4,135	4,100	4,195	4,220	4,035
TOWR	Negatif	Trading	Negatif	Sell	1,000	995	980	1,015	1,020	965
TPIA	Positif	Oversold	Negatif	Spec. Buy	2,050	2,020	1,980	2,090	2,120	1,950
UNTR	Negatif	Trading	Positif	Hold	23,200	23,075	22,875	23,400	23,525	22,525
UNVR	Negatif	OverBought	Positif	Sell	4,585	4,540	4,495	4,630	4,675	4,430

## OUR TEAM

**Sukarno Alatas**

Head of Equity Research

[sukarno@kiwoom.co.id](mailto:sukarno@kiwoom.co.id) | 021 5010 5800**Michelle Abadi**

Associate

[michelle@kiwoom.co.id](mailto:michelle@kiwoom.co.id) | 021 5010 5800**Abdul Azis Setyo Wibowo**

Equity Research Analyst

[azis@kiwoom.co.id](mailto:azis@kiwoom.co.id) | 021 5010 5800**OTHER DISCLOSURES**

All Kiwoom's research reports made available to clients are simultaneously available on our own website <http://www.kiwoom.co.id/>. Not all research content is redistributed, e-mailed or made available to third-party aggregators. For all research reports available on a particular stock, please contact your sales representative. Any data discrepancies in this report could be the result of different calculations and/or adjustments.

**DISCLAIMER** This report has been prepared and issued by PT Kiwoom Sekuritas Indonesia. Information has been obtained from sources believed to be reliable but Kiwoom Securities do not warrant its completeness or accuracy. Forward-looking information or statements in this report contain information that is based on forecast of future results, estimates of amounts not yet determinable, assumptions, and therefore involve known and unknown risks and uncertainties which may cause the actual results, performance or achievements of their subject matter to be materially different from current expectations.

To the fullest extent allowed by law, PT Kiwoom Sekuritas Indonesia shall not be liable for any direct, indirect or consequential losses, loss of profits, damages, costs or expenses incurred or suffered by any person or organization arising from reliance on or use of any information contained on this report. The information that we provide should not be construed in any manner whatsoever as, personalized advice.

No mention of a particular security in this report constitutes a recommendation to buy, sell or hold that or any security, or that any particular security, portfolio of securities, transaction or investment strategy is suitable for any specific person. This report is being supplied to you solely for your information and may not be reproduced by, further distributed to or published in whole or in part by, any other person.