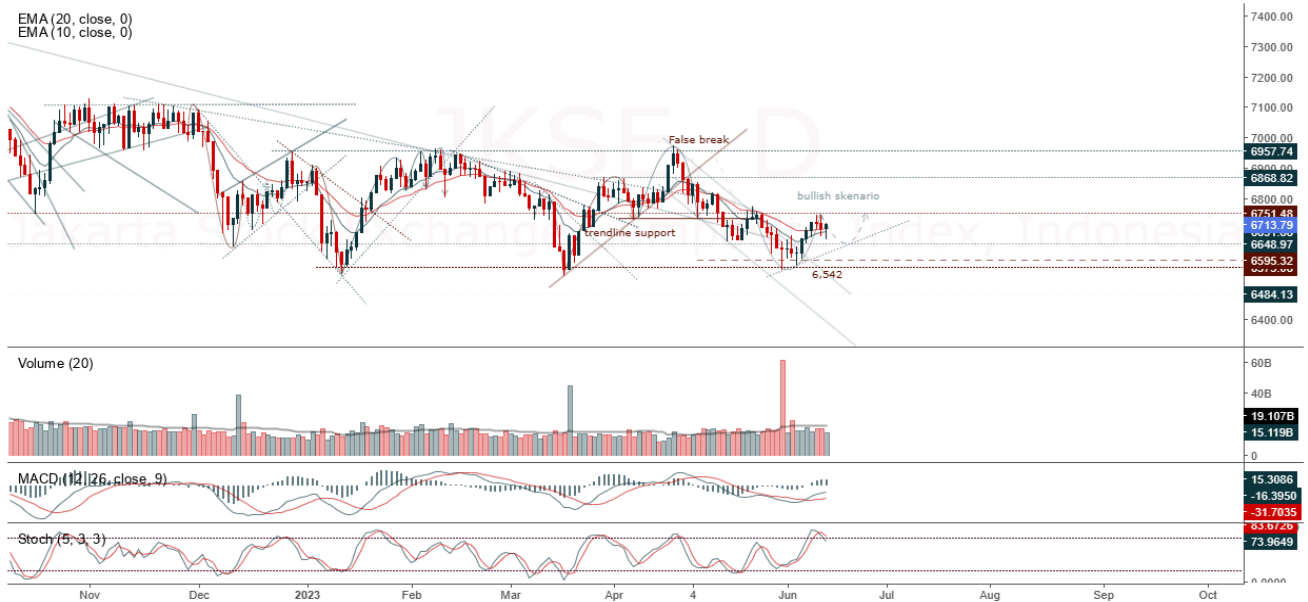


JCI Range Today 6,660 – 6,677 (Support), 6,744 – 6,757 (Resistance)

Jakarta Stock Exchange Composite Index, Indonesia, Jakarta:JKSE, D

EMA (20, close, 0)
EMA (10, close, 0)



JCI closed higher with a bullish candle. Stochastic indicator is bearish, MACD histogram is moving positive (line is bullish) and volume is decreasing. If it moves bearish again, JCI is expected to weaken again to the support range of 6,660 – 6,677. If JCI is able to move bullish, there is a chance for JCI to go to the resistance at the range of 6,744 – 6,757.

ICBP

Indofood Cbp Sukses Makmur Tbk, Indonesia, Jakarta:ICBP, D

EMA (13, close, 0)
EMA (34, close, 0)



(ICBP) The price closed higher with a doji candle. The price has the opportunity to strengthen to the nearest resistance. Stochastic golden cross indicator, MACD histogram is moving negative (bearish line) and volume is increasing. Confirmation to buy if the next candle is bullish again or buy on support if it goes down first. We suggest being careful if it fails to stay above the support level. **(Trading Buy)**

TRADING STRATEGY:

1. Target Price: The price has a bullish opportunity to test the resistance level 11,525. If it breaks level 11,525 then the price will go to level 11,575. We recommend to be careful if the price fails to break through or turn around the support area.

2. Stop Loss: To minimize the risk of loss, we recommend placing a stop loss at level 11,100.

Entry Buy : 11,225 – 11,325
Target Price : 11,525 – 11,575
Support : 11,125 – 11,225
Cutloss : 11,100

LPPF

Matahari Department Store Tbk, Indonesia, Jakarta:LPPF, D

EMA (13, close, 0)
EMA (34, close, 0)



(LPPF) The price closed higher and returned to bullish. The price has the opportunity to strengthen again to the nearest resistance. Stochastic indicator is bullish, MACD histogram is moving positive again (golden cross line) and volume is neutral. Confirmation to buy if the next candle is bullish again or buy on support if it goes down first. We suggest being careful if it fails to stay above the support level. **(Trading Buy)**

TRADING STRATEGY:

1. Target Price: The price has a bullish opportunity to test the resistance level 3,750. If it breaks level 3,750 then the price will go to level 3,820. We recommend to be careful if the price fails to break through or turn around the support area.

2. Stop Loss: To minimize the risk of loss, we recommend placing a stop loss at level 3,530.

Entry Buy : 3,580 – 3,650
Target Price : 3,750 – 3,820
Support : 3,540 – 3,580
Cutloss : 3,530

MPMX

Mitra Pinasthika Mustika, Indonesia, Jakarta:MPMX, D

EMA (13, close, 0)
EMA (34, close, 0)



(MPMX) The price closed higher and breakout to the closest resistance. The price has the opportunity to strengthen again to the nearest resistance. The stochastic indicator is sloping, MACD histogram is moving in the positive direction (bullish line) and volume is increasing. Confirmation to buy if the next candle is bullish again or buy on support if it goes down first. We suggest being careful if it fails to stay above the support level. **(Trading Buy)**

TRADING STRATEGY:

1. Target Price: The price has a bullish opportunity to test the resistance level 1,050. If it breaks level 1,050 then the price will go to level 1,060. We recommend to be careful if the price fails to break through or turn around the support area.

2. Stop Loss: To minimize the risk of loss, we recommend placing a stop loss at level 1,005.

Entry Buy : 1,020 – 1,030
Target Price : 1,050 – 1,060
Support : 1,010 – 1,020
Cutloss : 1,005

SMGR

Semen Indonesia Persero Tbk, Indonesia, Jakarta:SMGR, D

EMA (13, close, 0)
EMA (34, close, 0)



(SMGR) The price closed higher and rallied again. The price has the opportunity to strengthen again to the nearest resistance. Stochastic indicator is bullish, MACD histogram is moving positive (bullish line) and volume is increasing. Confirmation to buy if the next candle is bullish again or buy on support if it goes down first. We suggest being careful if it fails to stay above the support level. **(Trading Buy)**

TRADING STRATEGY:

1. Target Price: The price has a bullish opportunity to test the resistance level 6,175. If it breaks level 6,175 then the price will go to level 6,250. We recommend to be careful if the price fails to break through or turn around the support area.
2. Stop Loss: To minimize the risk of loss, we recommend placing a stop loss at level 5,900.

Entry Buy : 5,975 – 6,075
Target Price : 6,175 – 6,250
Support : 5,925 – 5,975
Cutloss : 5,900

Forecast – Technical Analysis

Ticker	MAS	RSI Rec	MACD Trend	Recomm.	Pivot Point	Support		Resistance		Stop Loss Level
						1	2	1	2	
JCI	Negatif	Trading	Positif	Hold	6,700	6,675	6,650	6,725	6,750	6,550
ACES	Positif	OverBought	Negatif	Sell	680	655	640	695	720	630
ADRO	Negatif	Trading	Positif	Hold	2,275	2,220	2,165	2,330	2,385	2,135
AKRA	Negatif	Trading	Positif	Hold	1,475	1,455	1,445	1,485	1,505	1,420
AMRT	Positif	Trading	Negatif	Hold	2,675	2,645	2,615	2,705	2,735	2,575
ANTM	Negatif	Trading	Positif	Hold	2,035	2,020	1,995	2,060	2,075	1,965
ARTO	Negatif	OverBought	Positif	Sell	3,015	2,890	2,765	3,140	3,265	2,725
ASII	Negatif	OverBought	Positif	Sell	6,875	6,850	6,800	6,925	6,950	6,700
BBCA	Positif	Trading	Negatif	Hold	9,075	9,050	9,025	9,100	9,125	8,900
BBNI	Positif	Trading	Positif	Spec. Buy	9,025	8,975	8,875	9,125	9,175	8,750
BBRI	Negatif	OverBought	Negatif	Strong Sell	5,500	5,475	5,425	5,550	5,575	5,325
BBTN	Positif	Trading	Negatif	Hold	1,270	1,255	1,240	1,285	1,300	1,220
BMRI	Negatif	Trading	Negatif	Sell	5,100	5,050	4,995	5,150	5,200	4,920
BRIS	Positif	Trading	Negatif	Hold	1,675	1,665	1,645	1,695	1,705	1,620
BRPT	Negatif	Trading	Negatif	Sell	750	740	735	755	765	720
BUKA	Negatif	Trading	Positif	Hold	213	206	199	220	227	196
CPIN	Negatif	Trading	Negatif	Sell	5,100	5,025	4,965	5,150	5,225	4,890
EMTK	Negatif	Trading	Positif	Hold	690	675	660	705	720	650
ESSA	Negatif	Trading	Positif	Hold	625	605	580	650	670	570
EXCL	Positif	Trading	Positif	Spec. Buy	2,025	2,005	1,985	2,045	2,065	1,955
GOTO	Positif	Trading	Negatif	Hold	116	115	113	118	119	111
HRUM	Positif	Trading	Positif	Spec. Buy	1,465	1,450	1,430	1,485	1,500	1,410
ICBP	Negatif	Trading	Negatif	Sell	11,325	11,275	11,225	11,375	11,425	11,050
INCO	Positif	Trading	Negatif	Hold	6,600	6,525	6,475	6,650	6,725	6,375
INDF	Positif	OverBought	Positif	Hold	7,450	7,425	7,375	7,500	7,525	7,250
INDY	Negatif	Trading	Positif	Hold	1,995	1,960	1,915	2,040	2,075	1,885
INKP	Negatif	OverBought	Positif	Sell	7,850	7,625	7,450	8,025	8,250	7,350
INTP	Negatif	Trading	Negatif	Sell	9,875	9,800	9,725	9,950	10,025	9,575
ITMG	Negatif	Oversold	Positif	Spec. Buy	23,875	23,400	22,875	24,400	24,875	22,550
JPFA	Negatif	Trading	Positif	Hold	1,235	1,225	1,215	1,245	1,255	1,195
KLBF	Negatif	Trading	Negatif	Sell	2,060	2,040	2,010	2,090	2,110	1,980
MDKA	Positif	Oversold	Positif	Buy	3,030	3,015	3,000	3,045	3,060	2,955
MEDC	Positif	Trading	Positif	Spec. Buy	900	895	885	910	915	870
PGAS	Positif	Oversold	Negatif	Spec. Buy	1,310	1,305	1,295	1,320	1,325	1,275
PTBA	Negatif	Trading	Positif	Hold	3,555	3,470	3,375	3,650	3,735	3,325
SCMA	Negatif	Trading	Positif	Hold	159	157	154	162	164	152
SIDO	Negatif	Trading	Positif	Hold	755	745	740	760	770	725
SMGR	Negatif	Trading	Positif	Hold	6,025	5,975	5,900	6,100	6,150	5,825
SRTG	Negatif	Trading	Positif	Hold	1,700	1,675	1,630	1,745	1,770	1,605
TBIG	Positif	Trading	Positif	Spec. Buy	2,100	2,075	2,050	2,125	2,150	2,015
TINS	Negatif	Trading	Positif	Hold	975	965	950	990	1,000	935
TLKM	Positif	Trading	Negatif	Hold	4,010	3,975	3,950	4,035	4,070	3,890
TOWR	Negatif	Trading	Positif	Hold	1,030	1,025	1,015	1,040	1,045	1,000
TPIA	Negatif	Trading	Negatif	Sell	2,070	2,055	2,030	2,095	2,110	1,995
UNTR	Positif	Oversold	Positif	Buy	23,125	23,000	22,825	23,300	23,425	22,475
UNVR	Positif	Trading	Negatif	Hold	4,475	4,425	4,365	4,535	4,585	4,295

OUR TEAM

Sukarno Alatas

Head of Equity Research

sukarno@kiwoom.co.id | 021 5010 5800**Michelle Abadi**

Associate

michelle@kiwoom.co.id | 021 5010 5800**Abdul Azis Setyo Wibowo**

Equity Research Analyst

azis@kiwoom.co.id | 021 5010 5800**OTHER DISCLOSURES**

All Kiwoom's research reports made available to clients are simultaneously available on our own website <http://www.kiwoom.co.id/>. Not all research content is redistributed, e-mailed or made available to third-party aggregators. For all research reports available on a particular stock, please contact your sales representative. Any data discrepancies in this report could be the result of different calculations and/or adjustments.

DISCLAIMER This report has been prepared and issued by PT Kiwoom Sekuritas Indonesia. Information has been obtained from sources believed to be reliable but Kiwoom Securities do not warrant its completeness or accuracy. Forward-looking information or statements in this report contain information that is based on forecast of future results, estimates of amounts not yet determinable, assumptions, and therefore involve known and unknown risks and uncertainties which may cause the actual results, performance or achievements of their subject matter to be materially different from current expectations.

To the fullest extent allowed by law, PT Kiwoom Sekuritas Indonesia shall not be liable for any direct, indirect or consequential losses, loss of profits, damages, costs or expenses incurred or suffered by any person or organization arising from reliance on or use of any information contained on this report. The information that we provide should not be construed in any manner whatsoever as, personalized advice.

No mention of a particular security in this report constitutes a recommendation to buy, sell or hold that or any security, or that any particular security, portfolio of securities, transaction or investment strategy is suitable for any specific person. This report is being supplied to you solely for your information and may not be reproduced by, further distributed to or published in whole or in part by, any other person.